

STATE OF ILLINOIS
DEPARTMENT OF TRANSPORTATION

ROUTE NO.	SECTION	COUNTY	TOTAL SHEETS	SHEET NO.
338	114R-1	WILL	355	281
FED. ROAD DIST. NO. 7		ILLINOIS	FED. AID PROJECT	

Contract # 62416

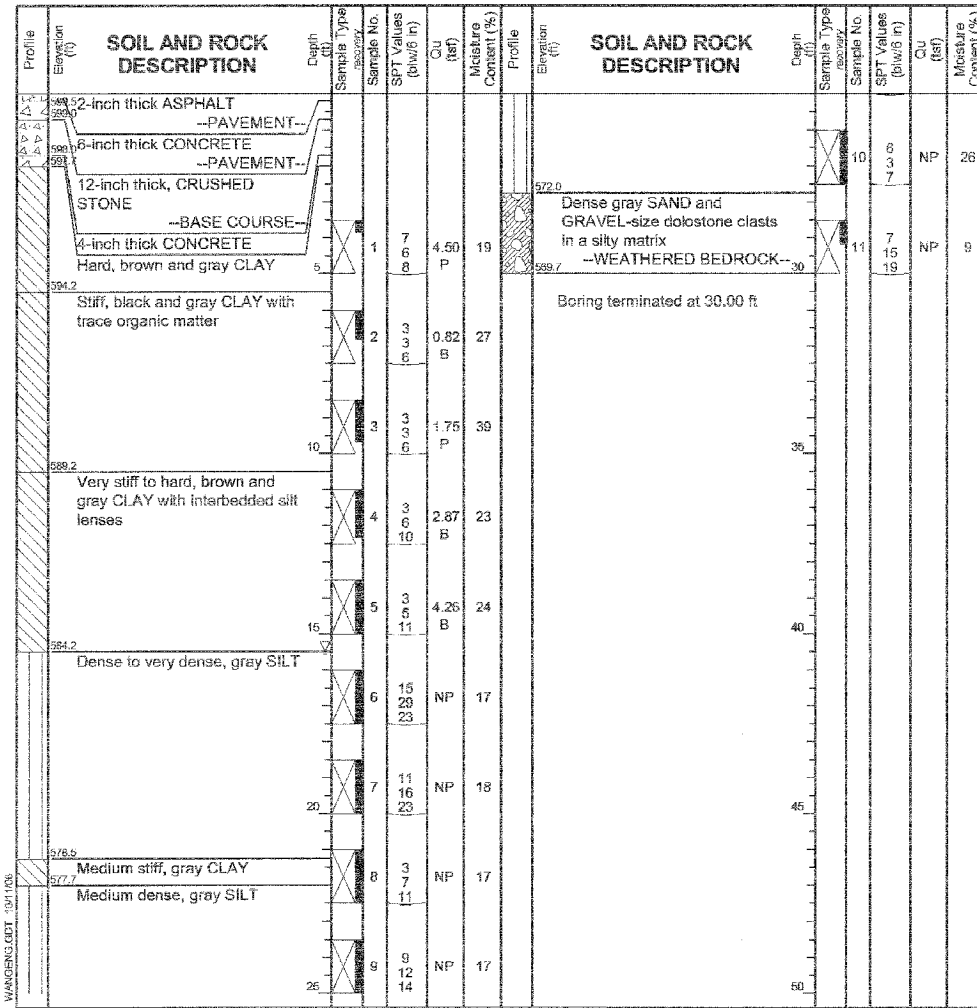
W Wang Engineering, INC.
Consulting Geotechnical and
Environmental Engineers
wangeng3@wangeng.com
1145 Main Street
Lombard, IL 60148
Telephone: 630 953-9928
Fax: 630 953-9938

BORING LOG RW1-4
WEI Job No.: 790-05-01

Datum: NGVD
Elevation: 599.74 ft
North: 1770473.56 ft
East: 1021056.81 ft
Station: 3051+32.88
Offset: 2.51 RT

Client: **TranSystems Corporation**
Project: **RT 59 (FAP 338) Reconstruction, IDOT D-91-123-02**
Location: **T35N R9E, Will County, Illinois**

Page 1 of 1



GENERAL NOTES		WATER LEVEL DATA	
Begin Drilling	04-16-2003	Complete Drilling	04-16-2003
Drilling Contractor	Patrick Drilling	Drill Rig	CME-55 TMR
Driller	K&J	Logger	A. Taylor
Checked by	E. Datz	Time After Drilling	NA
Drilling Method	3.25 ID HSA; Boring backfilled upon completion		
While Drilling	15.50 ft	At Completion of Drilling	DRY
Depth to Water	NA	The stratification lines represent the approximate boundary between soil types; the actual transition may be gradual.	

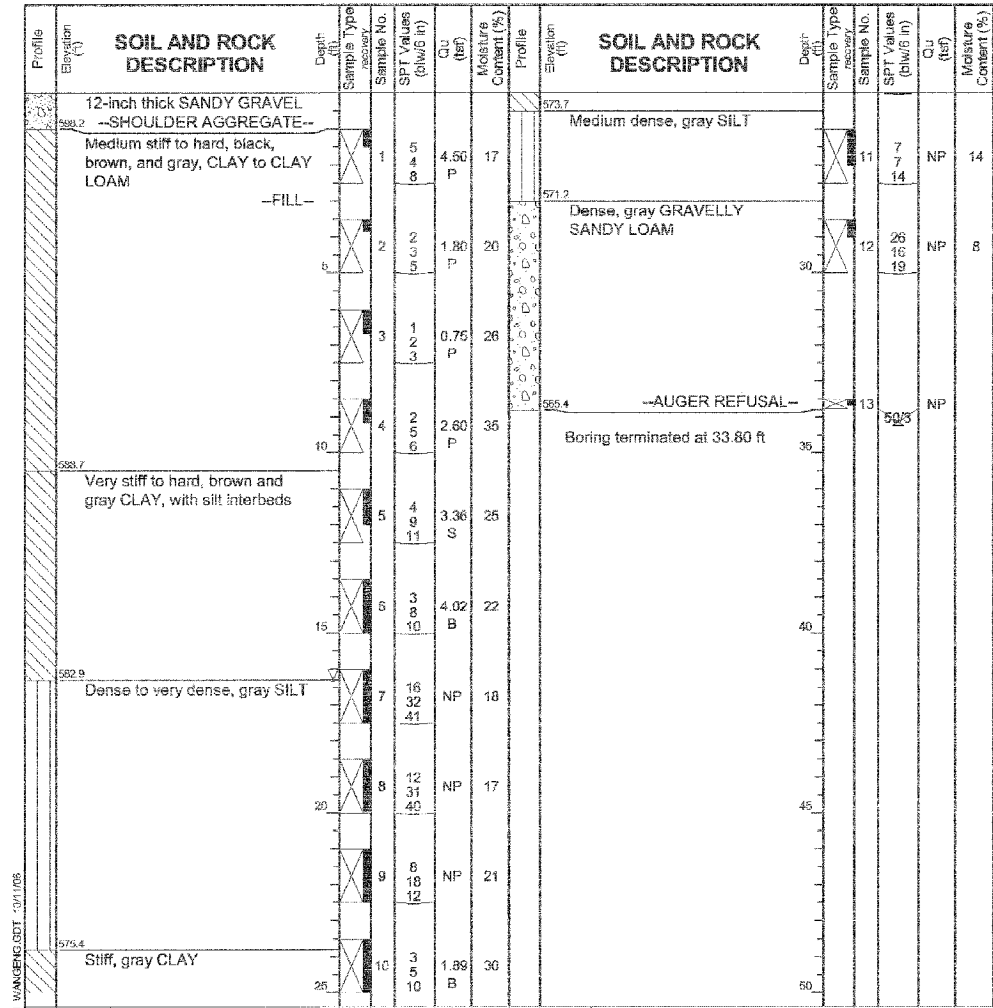
W Wang Engineering, INC.
Consulting Geotechnical and
Environmental Engineers
wangeng3@wangeng.com
1145 Main Street
Lombard, IL 60148
Telephone: 630 953-9928
Fax: 630 953-9938

BORING LOG RW3-2
WEI Job No.: 790-05-01

Datum: NGVD
Elevation: 599.17 ft
North: 1770454.45 ft
East: 1021078.70 ft
Station: 3051+13.09
Offset: 23.79 RT

Client: **TranSystems Corporation**
Project: **RT 59 (FAP 338) Reconstruction, IDOT D-91-123-02**
Location: **T35N R9E, Will County, Illinois**

Page 1 of 1



GENERAL NOTES		WATER LEVEL DATA	
Begin Drilling	04-21-2003	Complete Drilling	04-21-2003
Drilling Contractor	Patrick Drilling	Drill Rig	CME-75 ATV
Driller	K&J	Logger	S. Patel
Checked by	N. Davis	Time After Drilling	NA
Drilling Method	3.25 ID HSA; Boring backfilled upon completion		
While Drilling	16.30 ft	At Completion of Drilling	NA
Depth to Water	NA	The stratification lines represent the approximate boundary between soil types; the actual transition may be gradual.	

DESIGNED	MDS
CHECKED	SLC
DRAWN	MDS
CHECKED	SLC

BORING LOGS

IL ROUTE 59 OVER DRAINAGE DITCH
F.A.P. ROUTE 338 SECTION 114R-1
WILL COUNTY
STATION 3051+32.33



1051 PERIMETER DRIVE, SUITE 1025
SCHAMBERG, IL 60173-5050
TEL (847) 605-9600
FAX (847) 605-9610