

STATE OF ILLINOIS
DEPARTMENT OF TRANSPORTATION

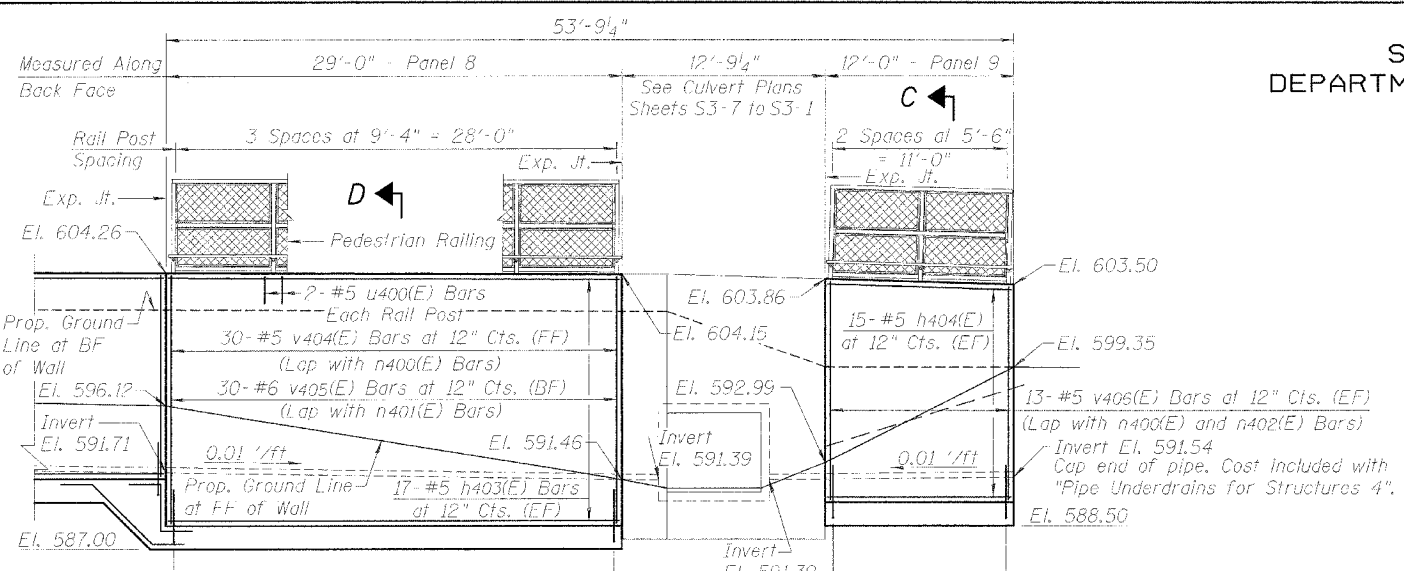
ROUTE NO.	SECTION	COUNTY	TOTAL SHEETS	SHEET NO.
338	114R-1	WILL	355	7
FED. AID DIST. NO. 7		ILLINOIS	FED. AID PROJECT	

SHEET NO. 34-3
7 SHEETS

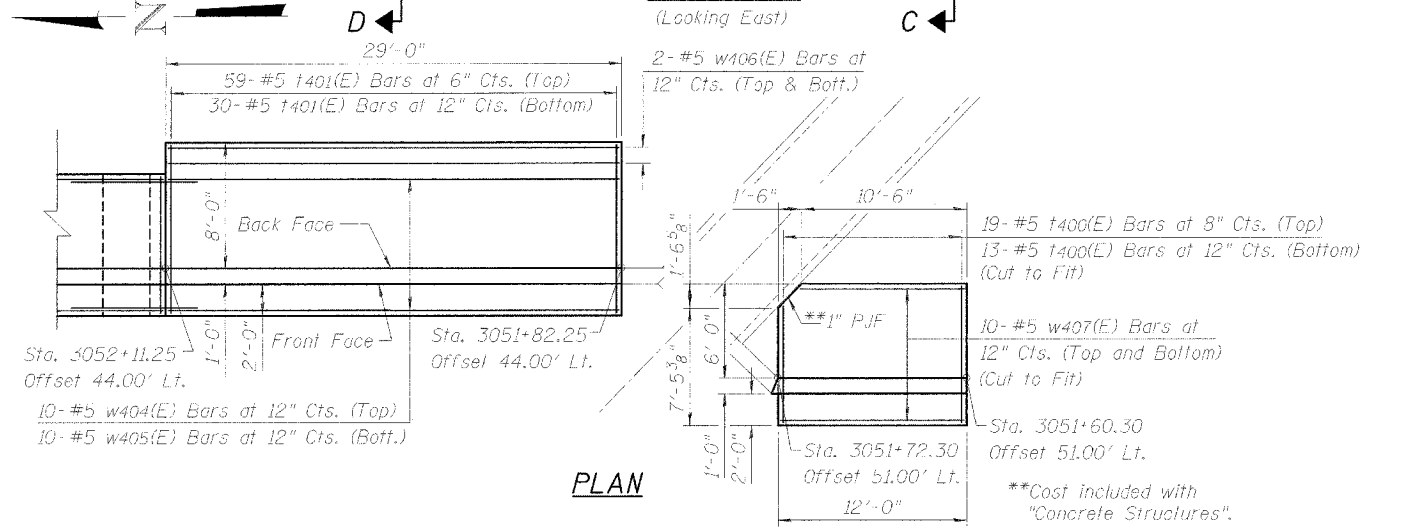
Contract # 62416

BILL OF MATERIAL

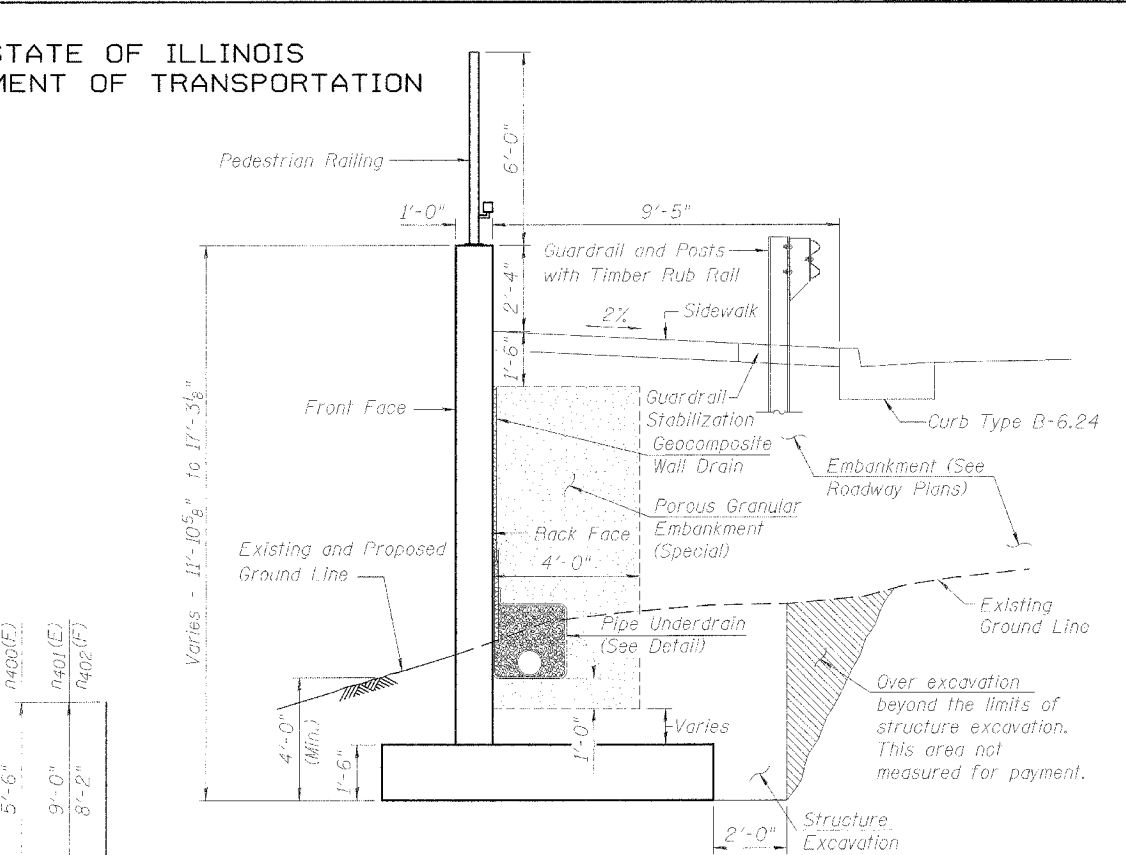
Bar	No.	Size	Length	Shape
h400(E)	22	#5	4'-6"	┌
h401(E)	30	#5	8'-8"	┌
h402(E)	86	#5	31'-2"	┌
h403(E)	92	#5	28'-8"	┌
h404(E)	30	#5	11'-8"	┌
h405(E)	32	#5	3'-0"	┌
n400(E)	233	#5	6'-4"	┌
n401(E)	59	#8	10'-4"	┌
n402(E)	320	#6	9'-2"	┌
l400(E)	392	#5	8'-8"	┌
l401(E)	89	#5	10'-8"	┌
l402(E)	20	#5	15'-8"	┌
u400(E)	48	#5	2'-8"	┌
v400(E)	8	#5	10'-0"	┌
v401(E)	20	#5	11'-3"	┌
v402(E)	124	#5	12'-10"	┌
v403(E)	180	#5	12'-5"	┌
v404(E)	30	#5	15'-4"	┌
v405(E)	30	#6	10'-5"	┌
v406(E)	26	#5	13'-2"	┌
w400(E)	10	#5	7'-8"	┌
w401(E)	10	#5	10'-5"	┌
w402(E)	100	#5	30'-4"	┌
w403(E)	34	#5	8'-8"	┌
w404(E)	10	#5	30'-11"	┌
w405(E)	10	#5	29'-7"	┌
w406(E)	1	#5	28'-8"	┌
w407(E)	20	#5	11'-8"	┌
Porous Granular Embankment, Special			Cu. Yd.	252
Structure Excavation			Cu. Yd.	783
Concrete Structures			Cu. Yd.	203.2
Reinforcement Bars, Epoxy Coated			Pound	29,180
Geocomposite Wall Drain			Sq. Yd.	172
Pipe Underdrains for Structures 4"			Foot	192



ELEVATION
(Looking East)



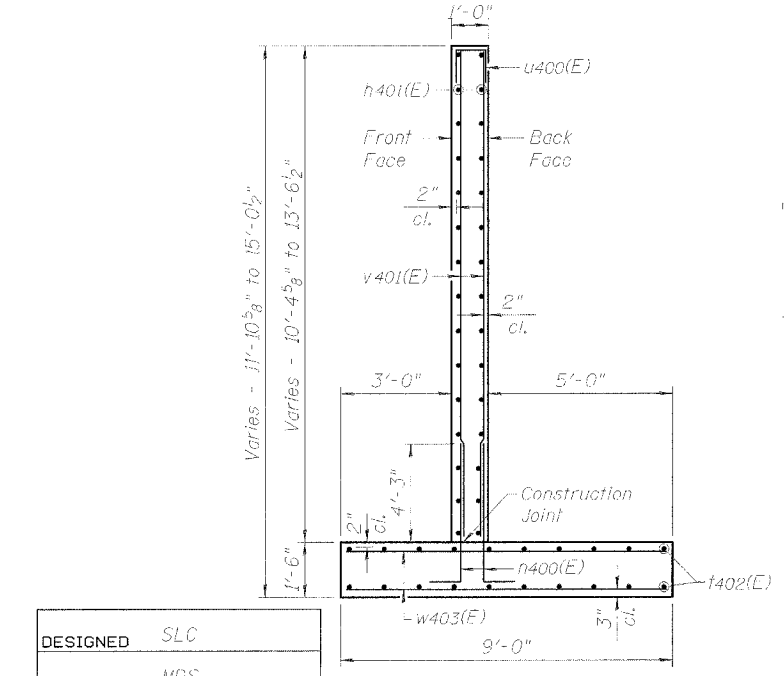
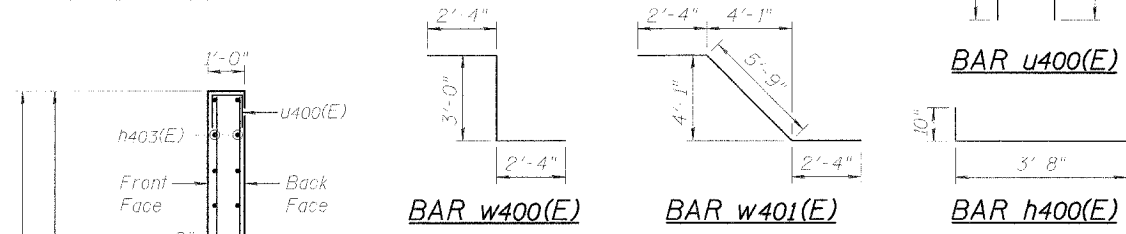
PLAN



TYPICAL SECTION THRU WALL

(See roadway drawings for guardrail, guardrail stabilization, embankment and curb details)

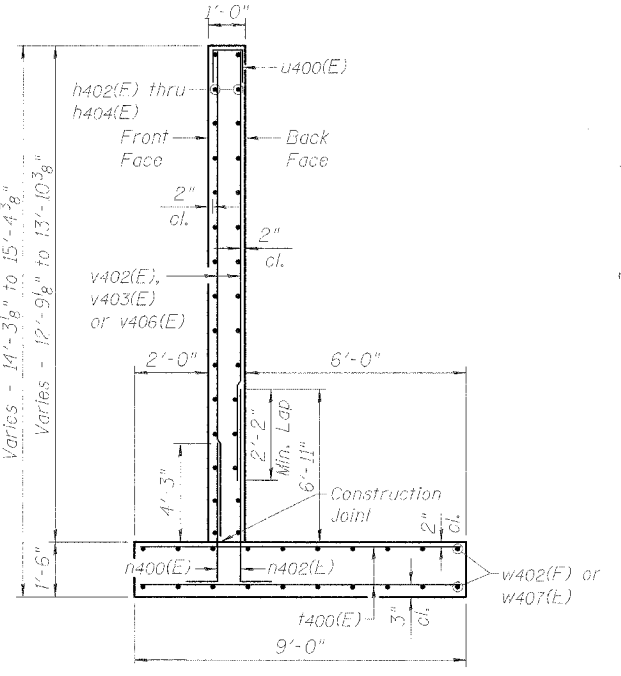
**BARS n400(E)
THRU n402(E)**



SECTION B-B

Panel 2

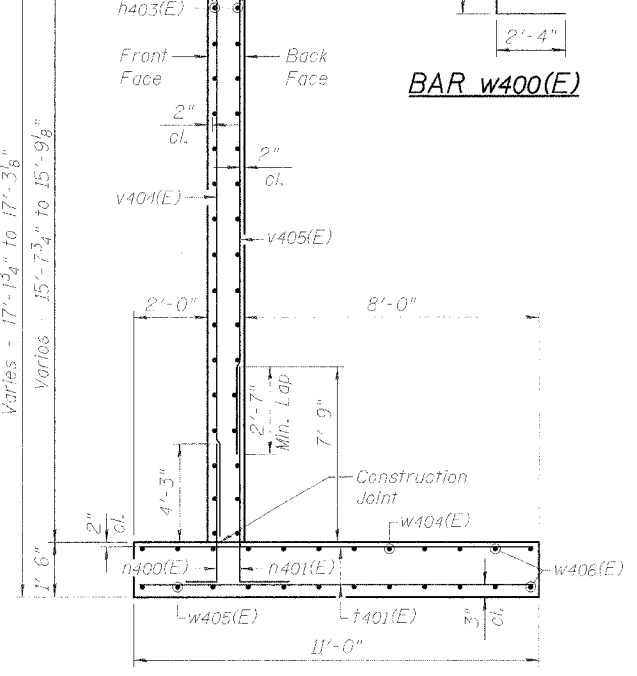
Maximum Calculated Bearing Pressure = 1.89 ksf



SECTION C-C

Panels 3 thru 7, 9

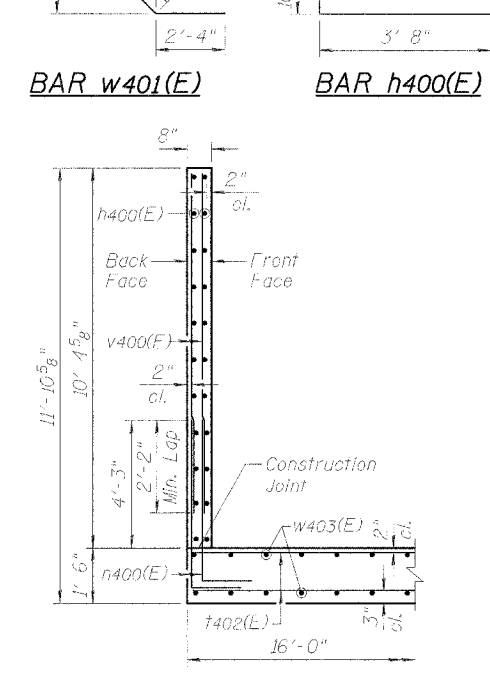
Maximum Calculated Bearing Pressure = 2.58 ksf



SECTION D-D

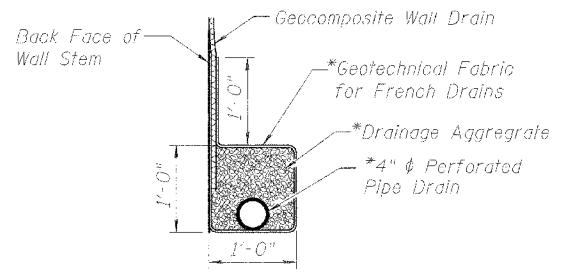
Panel 8

Maximum Calculated Bearing Pressure = 2.77 ksf



SECTION E-E

Panel 1



PIPE UNDERDRAIN DETAIL

* Included in the cost of "Pipe Underdrains for Structures".

RETAINING WALL DETAILS

RETAINING WALL ALONG IL ROUTE 59
F.A.P. ROUTE 338 SECTION 114R-1
WILL COUNTY
STATION 3051+60.30 TO STATION 3053+56.25
STRUCTURE NO. 099-W017



1051 PERIMETER DRIVE, SUITE 1025
SCHAMBERG, IL 60173-5038
TEL (815) 605-9600
FAX (815) 605-9630

B:\SHEET\8\DATEP - 01\ch02\0022\structural\sheet5\wccetall.rvt

DESIGNED	SLC
CHECKED	MDS
DRAWN	MDS
CHECKED	SLC