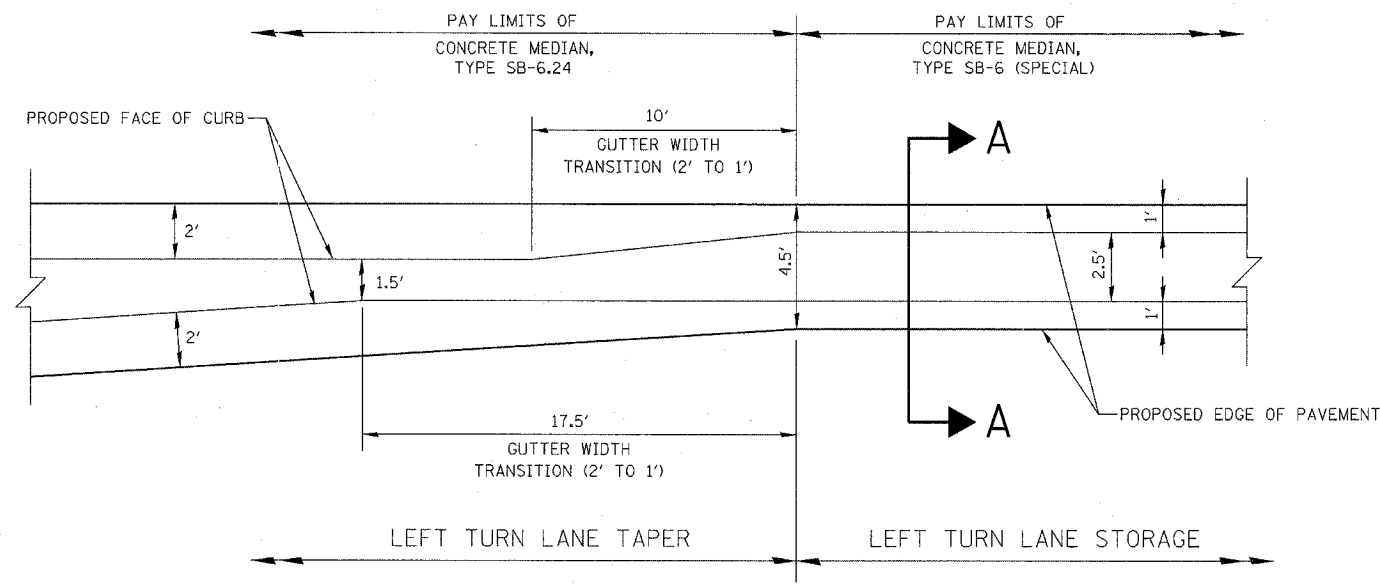
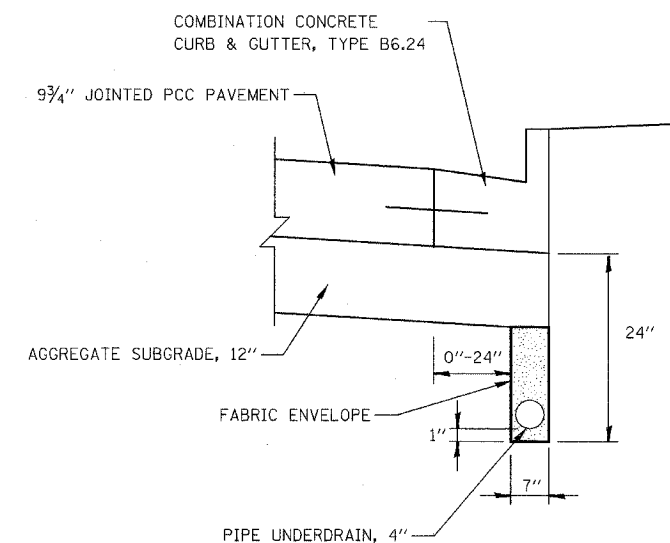


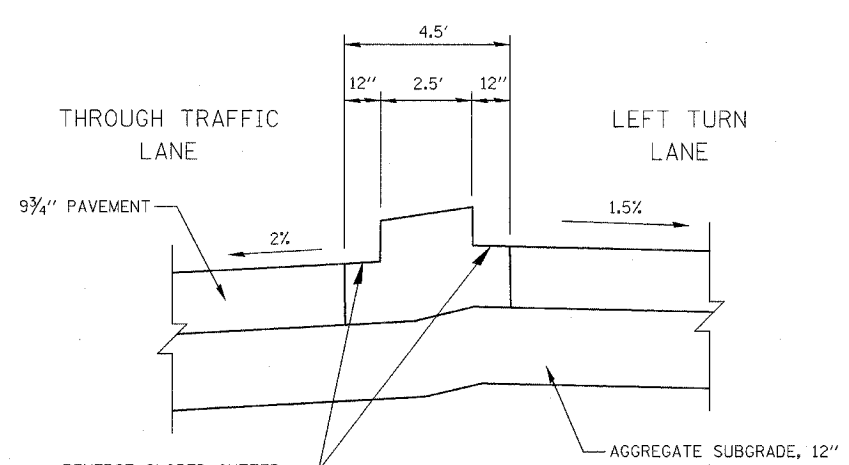
FAP SHEET NO.	SECTION	COUNTY	TOTAL SHEETS	SHEET NO.
338	(113 & 114) R-5	WILL	525	26
STA.	TO STA.			
FED. ROAD DIST. NO.	ILLINOIS	FAP 338 (IL RTE. 59)		



PLAN

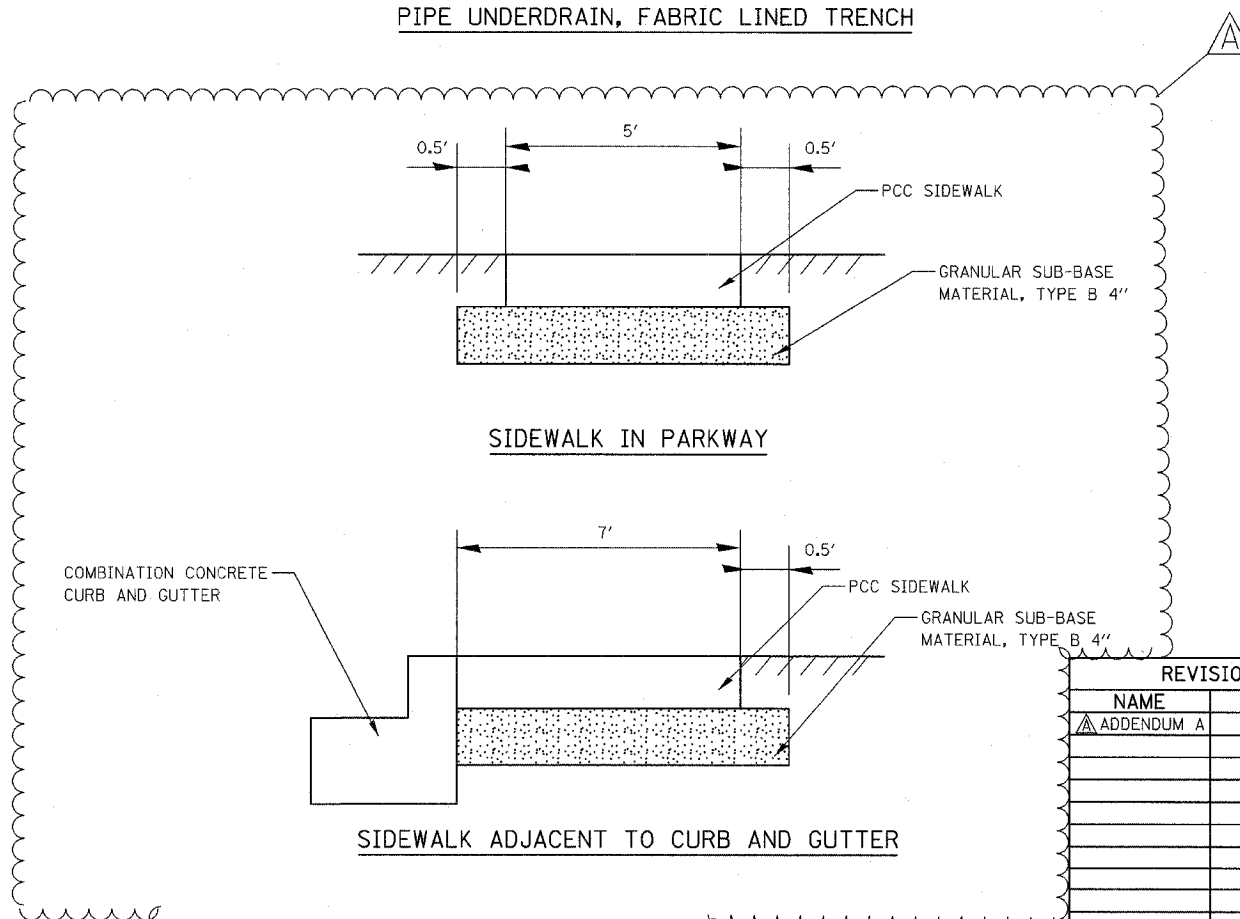


PIPE UNDERDRAIN, FABRIC LINED TRENCH



SECTION A-A

CONCRETE MEDIAN TYPE SB-6 (SPECIAL)



SIDEWALK IN PARKWAY

SIDEWALK ADJACENT TO CURB AND GUTTER

NOTE: GRANULAR SUB-BASE MATERIAL SHALL BE PLACED UNDER PROPOSED SIDEWALKS CONSTRUCTED WITHIN THE VILLAGE OF PLAINFIELD (NORTH OF THE DUPAGE RIVER).

REVISIONS	
NAME	DATE
ADDENDUM A	05-13-08

ILLINOIS DEPARTMENT OF TRANSPORTATION
DISTRICT NO. 1 SCHAUMBURG
TYPICAL SECTION
DETAILS

SCALE NONE
DATE MARCH 18, 2008
DRAWN BY SCB
CHECKED BY JCM