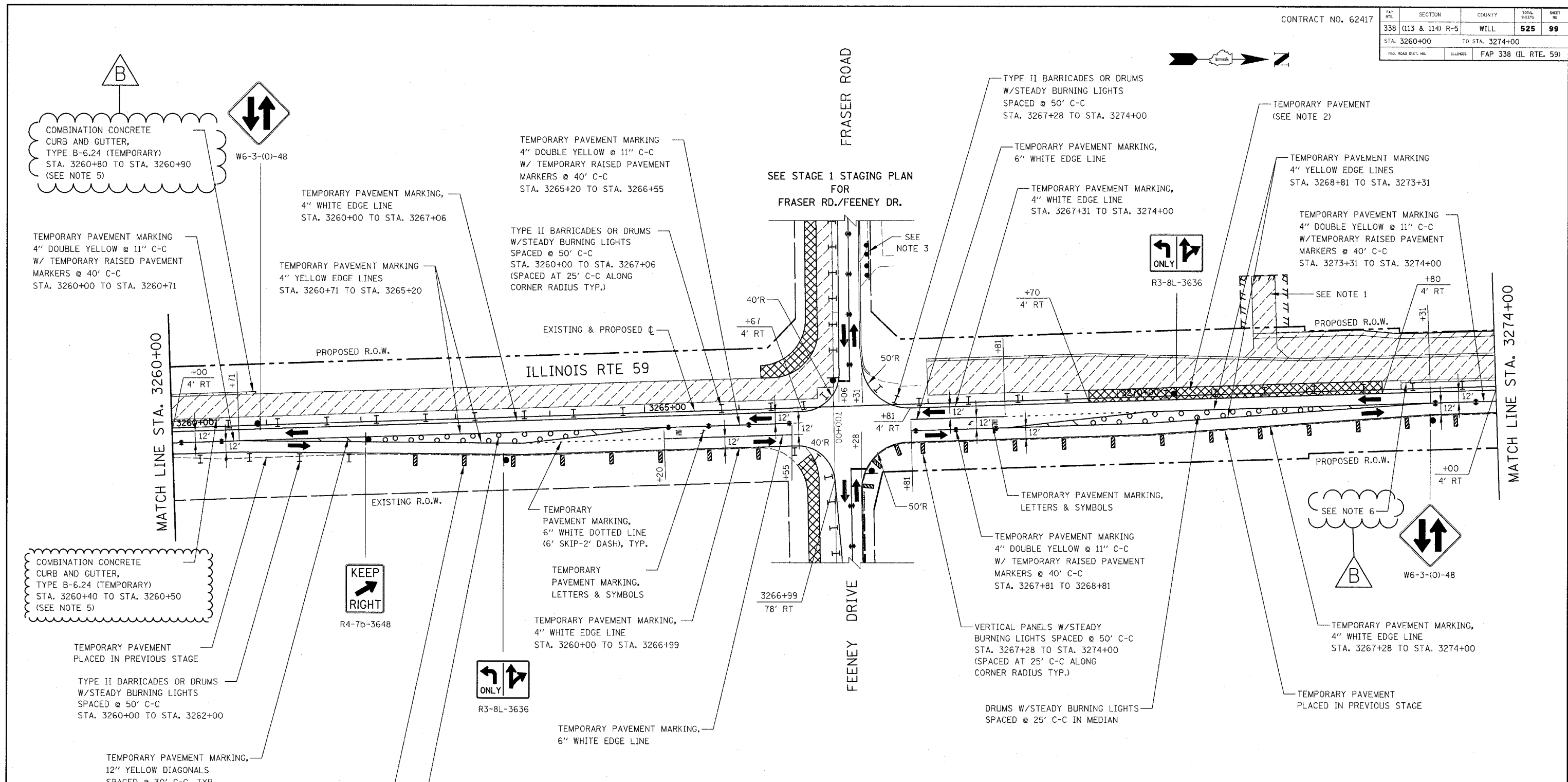


FAP NO.	SECTION	COUNTY	TOTAL SHEETS	SHEET NO.
338	(113 & 114) R-5	WILL	525	99
STA. 3260+00		TO STA. 3274+00		
FED. ROAD DIST. NO.		ILLINOIS	FAP 338 (IL RTE. 59)	

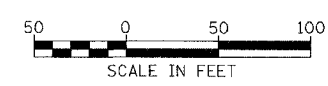


**NOTES**

- SEE MAINTENANCE OF TRAFFIC GENERAL NOTE 26.
- TEMPORARY PAVEMENT SHALL BE CONSTRUCTED TO CONNECT PROPOSED NEW PAVEMENT TO THE EXISTING PAVEMENT.
- DRIVEWAY CLOSED AT THE RIGHT-OF-WAY IN PREVIOUS STAGE, TO REMAIN CLOSED IN THIS STAGE.
- SEE MAINTENANCE OF TRAFFIC GENERAL NOTES 35 & 36
- SEE TEMPORARY CURB AND GUTTER DETAIL ON MAINTENANCE OF TRAFFIC DETAILS SHEET.
- COMBINATION CONCRETE CURB AND GUTTER, TYPE B-6.24 (TEMPORARY) STA. 3273+00 TO STA. 3273+10

5. SEE TEMPORARY CURB AND GUTTER DETAIL ON MAINTENANCE OF TRAFFIC DETAILS SHEET.

6. COMBINATION CONCRETE CURB AND GUTTER, TYPE B-6.24 (TEMPORARY) STA. 3273+00 TO STA. 3273+10



Rev. 05-01-08 JCM

REVISIONS	
NAME	DATE
ADDENDUM B	05-27-08

ILLINOIS DEPARTMENT OF TRANSPORTATION  
DISTRICT NO. 1 SCHAUMBURG  
STAGING PLANS  
ILLINOIS ROUTE 59  
STAGE 1

SCALE AS SHOWN  
DATE MARCH 18, 2008

DRAWN BY REW  
CHECKED BY JCM