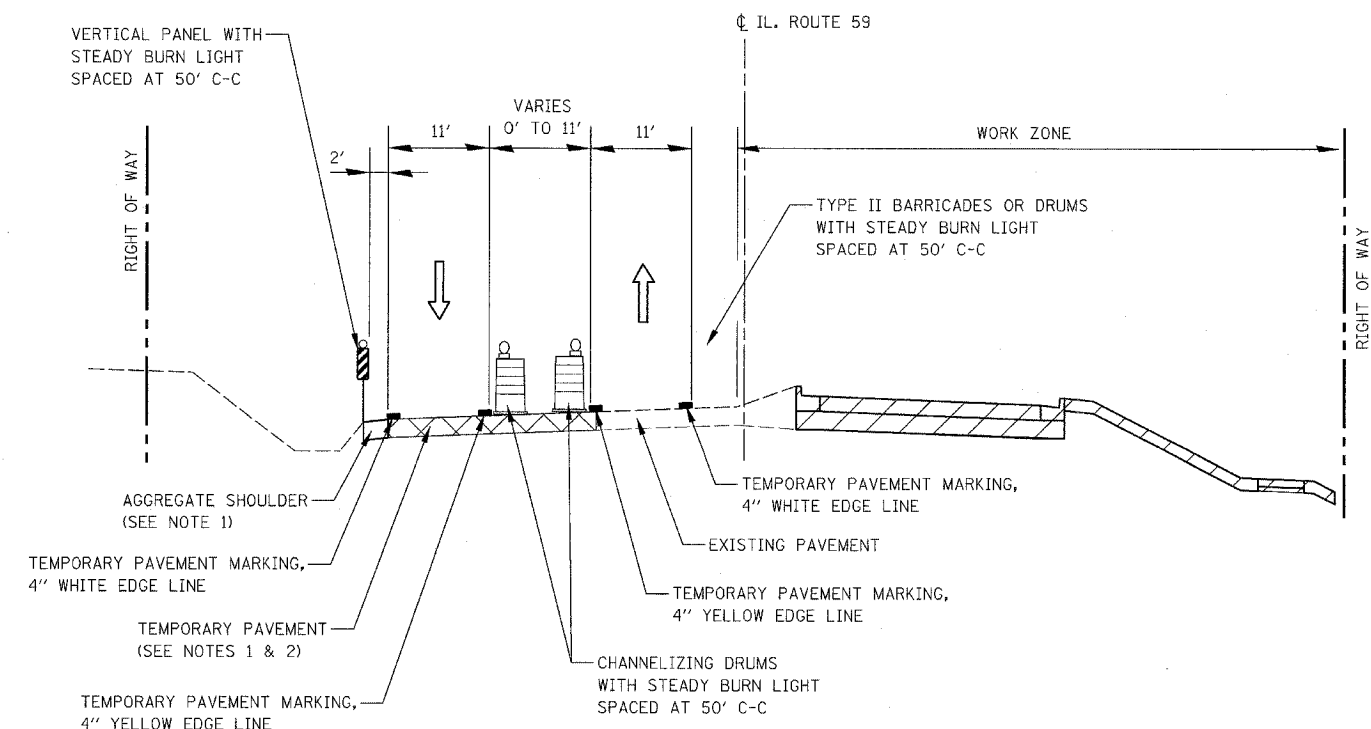
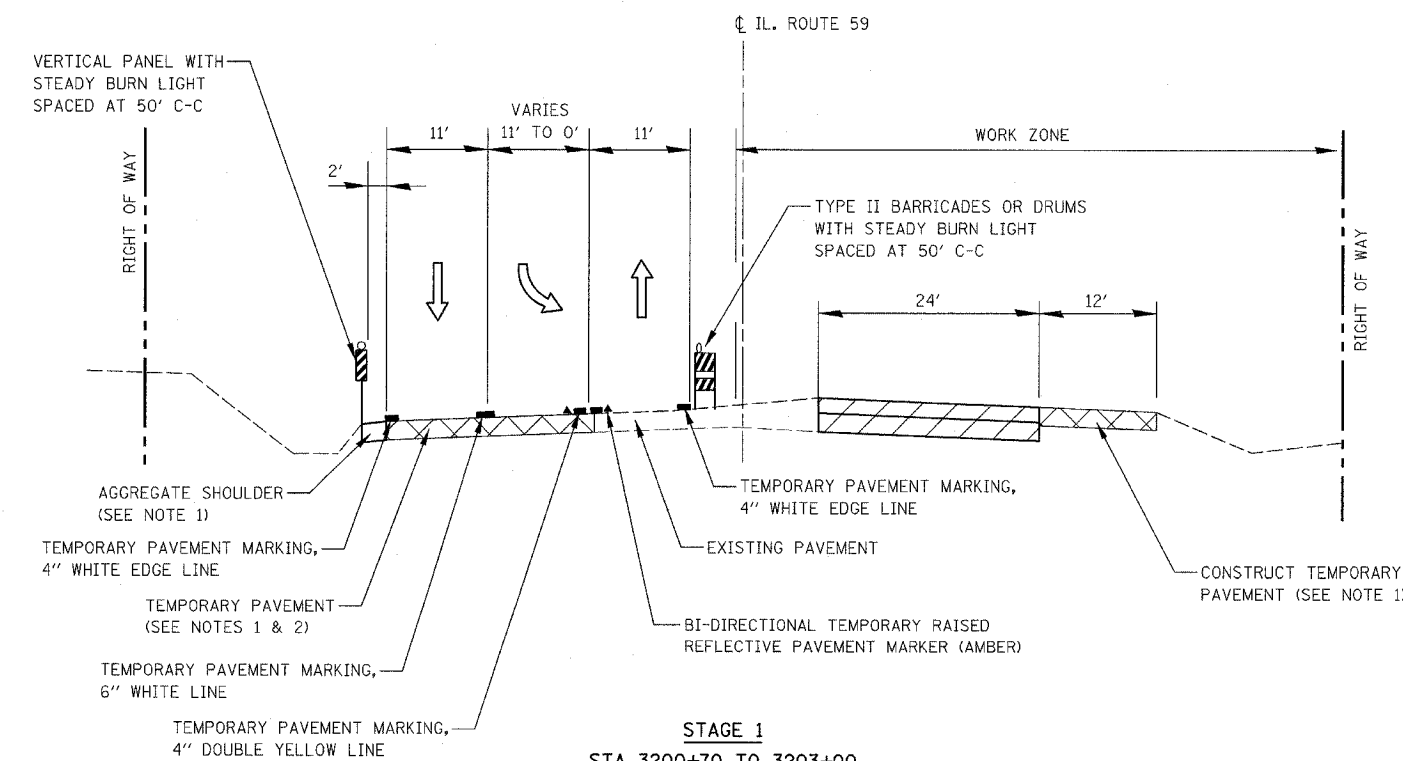


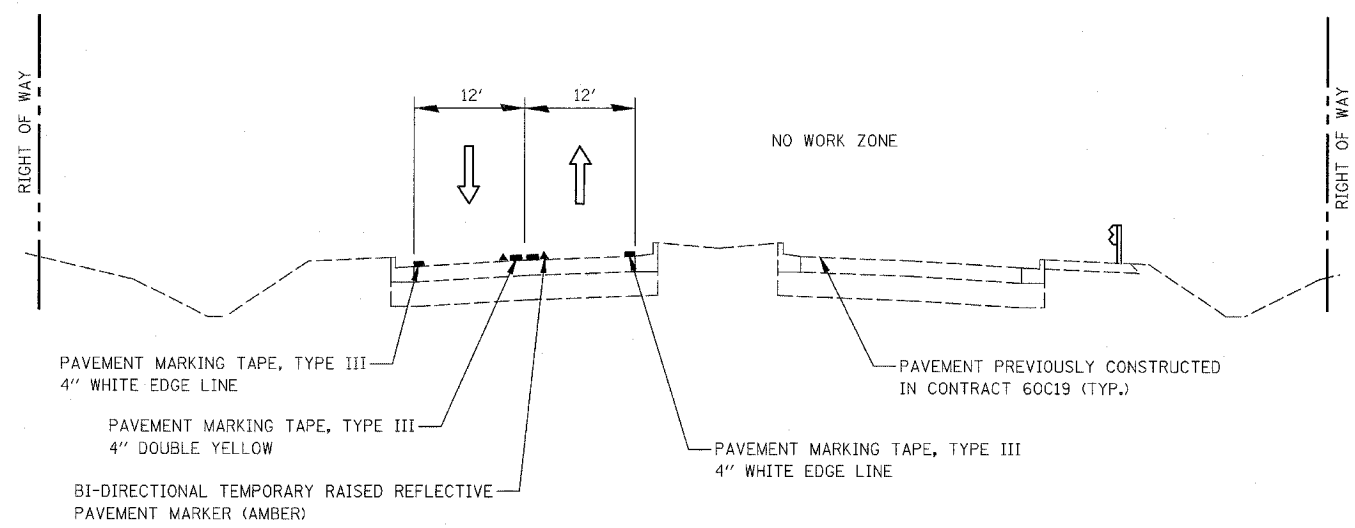
FAP NO.	SECTION	COUNTY	TOTAL SHEETS	SHEET NO.
338	(113 & 114) R-5	WILL	525	71
STA.	TO STA.			
FED. ROAD DIST. NO.	ILLINOIS	FAP 338 (IL. RTE. 59)		



STAGE 1
STA 3193+25 TO STA. 3200+70 AND
STA. 3203+00 TO STA 3206+26



STAGE 1
STA 3200+70 TO STA 3203+00
(RIVERWALK DRIVE LEFT TURN LANE)



STAGE 1
STA 3206+25 TO STA. 3213+60

NOTES

1. FOR DETAILS SEE TEMPORARY PAVEMENT DETAIL ON MAINTENANCE OF TRAFFIC DETAILS SHEET.
2. SEE MAINTENANCE OF TRAFFIC PLANS FOR TEMPORARY PAVEMENT PLACEMENT DETAILS.

ILLINOIS DEPARTMENT OF TRANSPORTATION
 DISTRICT NO. 1 SCHAUMBURG
 MAINTENANCE OF TRAFFIC
 TYPICAL SECTIONS
 STAGE 1

SCALE NOT TO SCALE DRAWN BY REW
 DATE MARCH 18, 2008 CHECKED BY HME