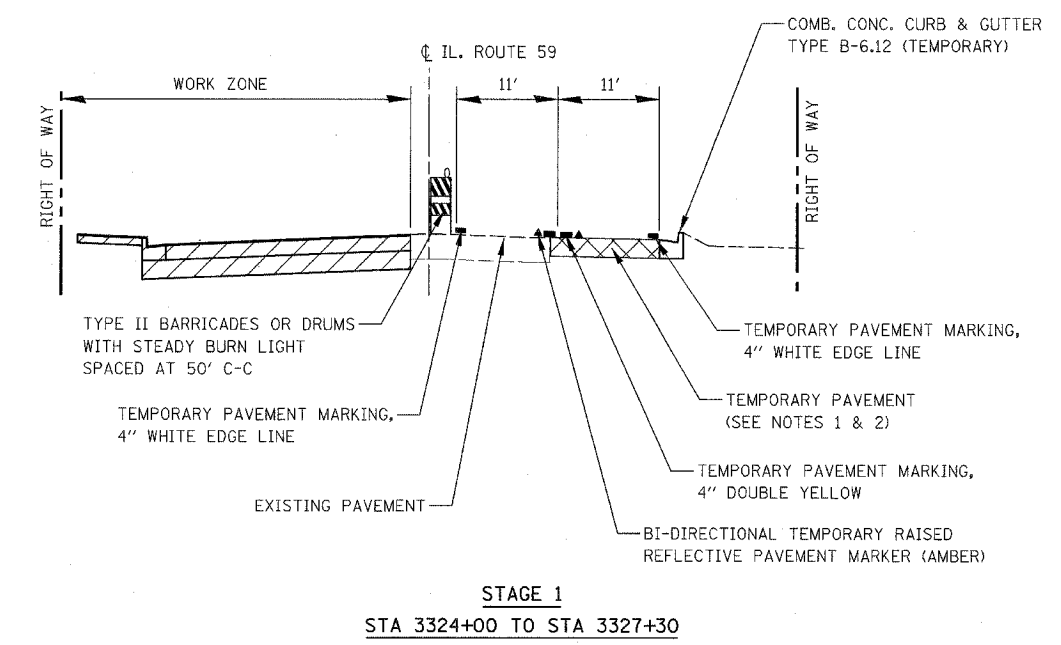
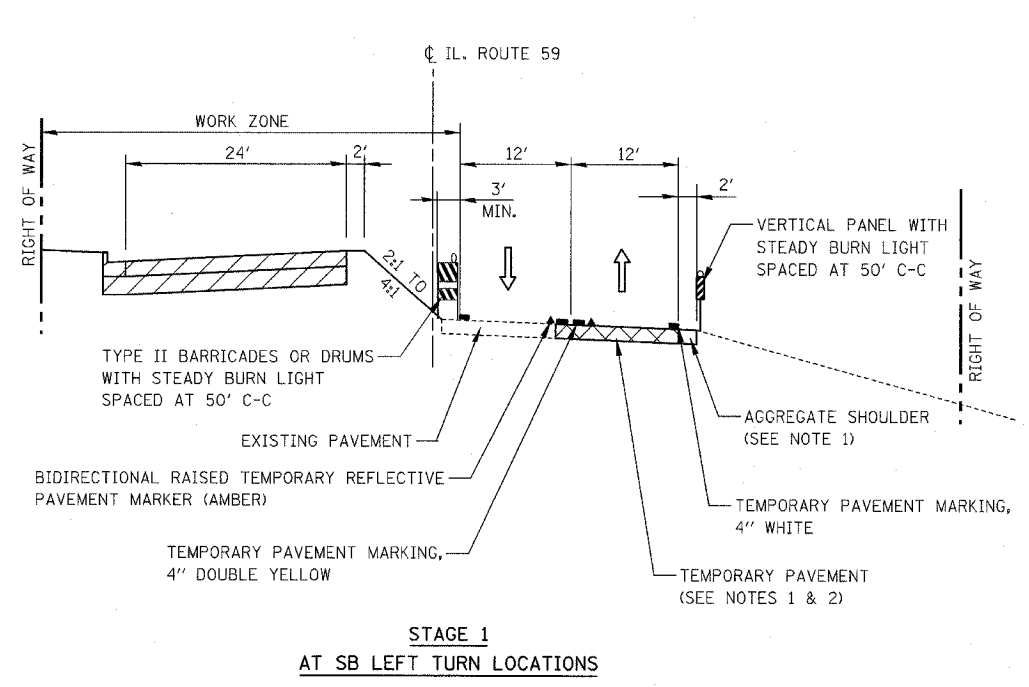
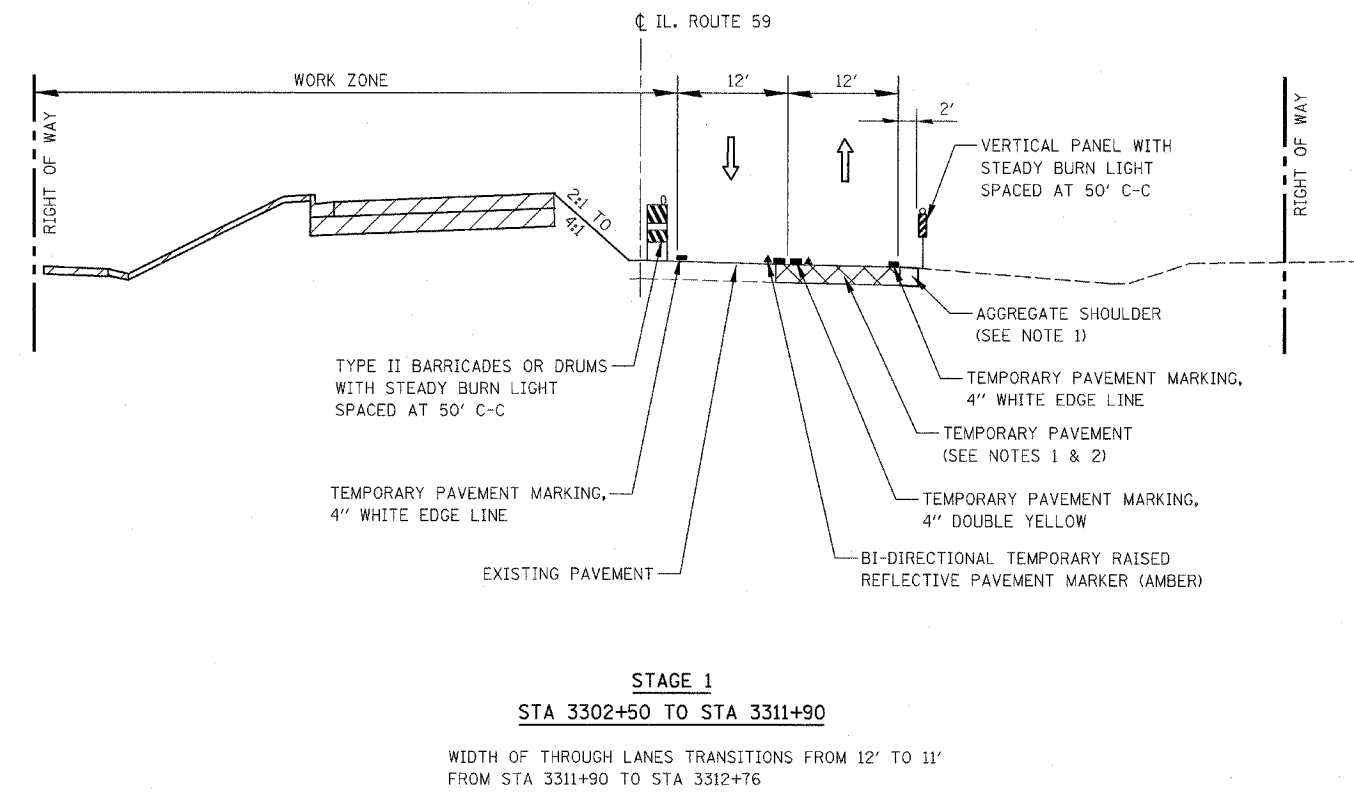
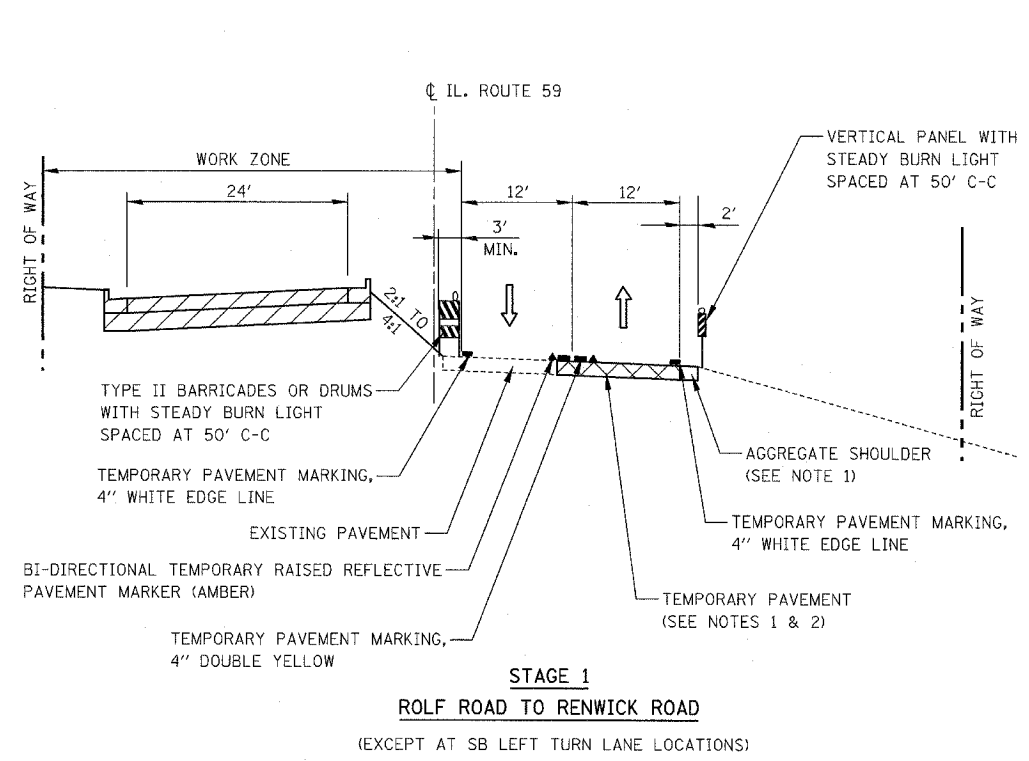


FAP NO.	SECTION	COUNTY	TOTAL SHEETS	SHEET NO.
338	(113 & 114) R-5	WILL	525	72
STA.	TO STA.			
FED. ROAD DIST. NO.	ILLINOIS	FAP 338 (IL RTE. 59)		



STA 3220+00 TO STA 3225+50 (ROLF ROAD)
 STA 3246+75 TO STA 3253+00 (DAYFIELD DRIVE)
 STA 3285+00 TO STA 3293+00 (COMMERCIAL ENTRANCE)

NOTES

1. FOR DETAILS SEE TEMPORARY PAVEMENT DETAIL ON MAINTENANCE OF TRAFFIC DETAILS SHEET.
2. SEE MAINTENANCE OF TRAFFIC PLANS FOR TEMPORARY PAVEMENT PLACEMENT DETAILS.

ILLINOIS DEPARTMENT OF TRANSPORTATION
 DISTRICT NO. 1 SCHAUMBURG
 MAINTENANCE OF TRAFFIC
 TYPICAL SECTIONS
 STAGE 1

SCALE NOT TO SCALE
 DATE MARCH 18, 2008
 DRAWN BY REW
 CHECKED BY HME