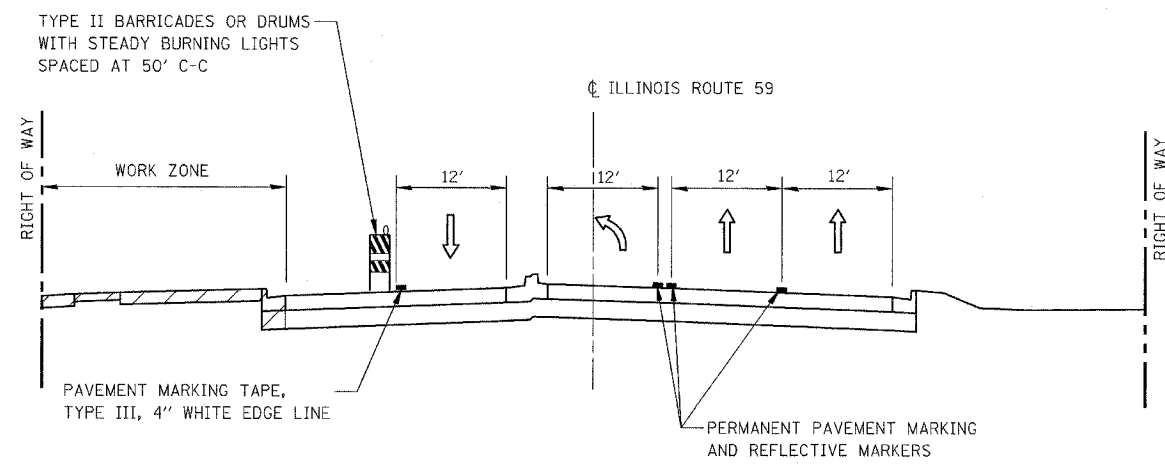
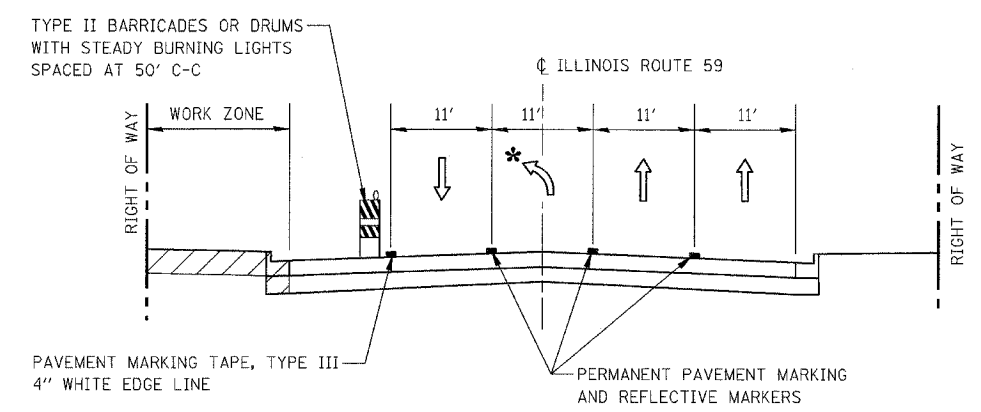


CONTRACT NO. 62417

| FAP DIST.           | SECTION         | COUNTY   | TOTAL SHEETS         | SHEET NO. |
|---------------------|-----------------|----------|----------------------|-----------|
| 338                 | (113 & 114) R-5 | WILL     | 525                  | 70        |
| STA.                |                 | TO STA.  |                      |           |
| FED. ROAD DIST. NO. |                 | ILLINOIS | FAP 338 (IL RTE. 59) |           |



**STAGE 4**  
 STA 3261+00 TO STA 3272+00 (FRASER RD/FEENEY DR)  
 STA 3287+50 TO STA 3296+25 (RENWICK RD)



**STAGE 4 AND STAGE 4A**  
 STA 3312+00 TO STA 3324+00 (FORT BEGGS DR)

\* LEFT TURN LANE TO FORT BEGGS DRIVE (STA 3317+45 TO STA 3319+57)

ILLINOIS DEPARTMENT OF TRANSPORTATION  
 DISTRICT NO. 1 SCHAUMBURG  
 MAINTENANCE OF TRAFFIC  
 TYPICAL SECTIONS  
 STAGE 4 AND STAGE 4A

SCALE NOT TO SCALE  
 DATE MARCH 18, 2008  
 DRAWN BY REW  
 CHECKED BY HME