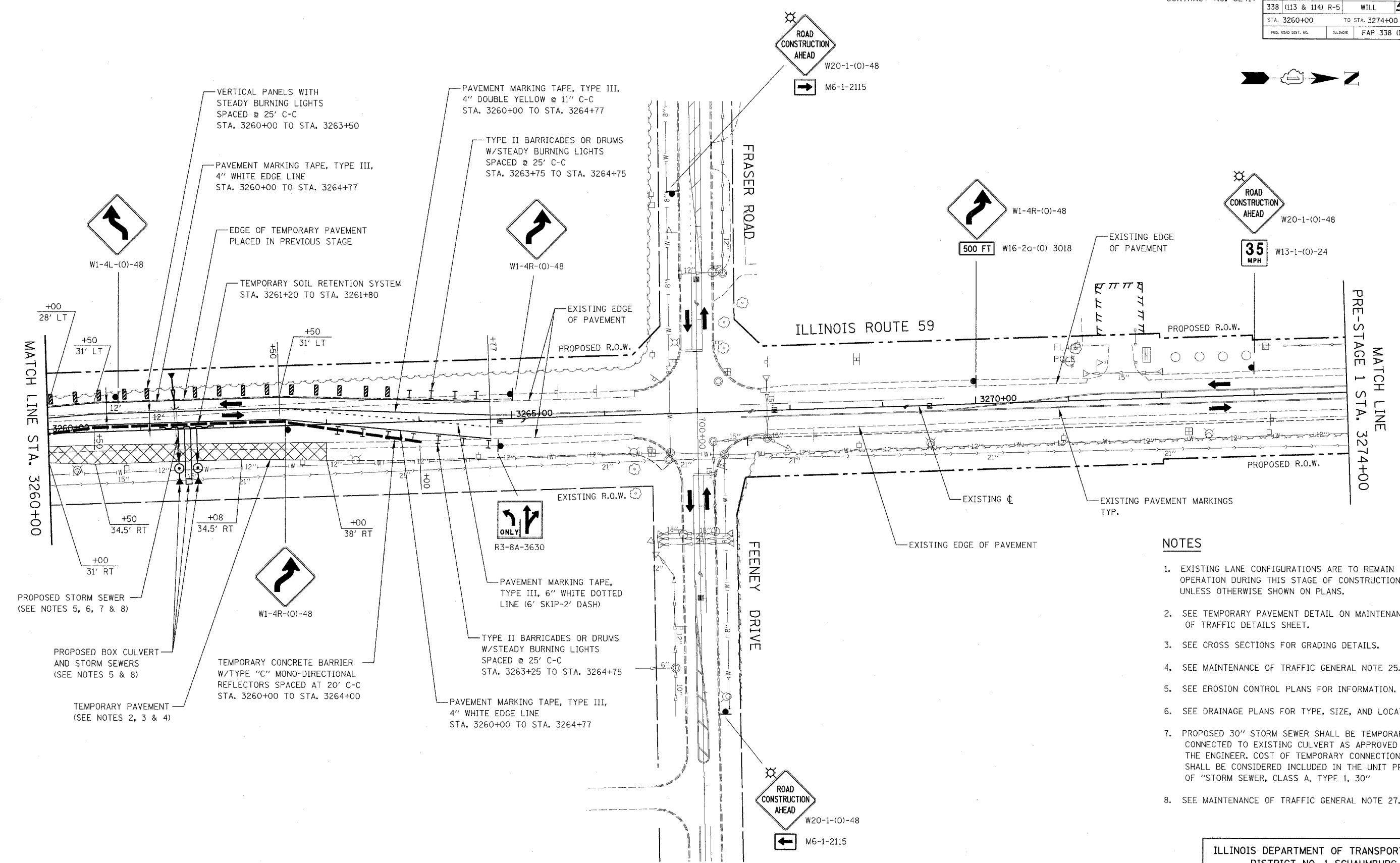


CONTRACT NO. 62417		FAP NO.	SECTION	COUNTY	TOTAL SHEETS	SHEET NO.
		338	(113 & 114) R-5	WILL	525	91
		STA. 3260+00 TO STA. 3274+00				
		FED. ROAD DIST. NO.	ILL. DIST.	FAP 338 (IL RTE. 59)		



- NOTES**
- EXISTING LANE CONFIGURATIONS ARE TO REMAIN IN OPERATION DURING THIS STAGE OF CONSTRUCTION UNLESS OTHERWISE SHOWN ON PLANS.
  - SEE TEMPORARY PAVEMENT DETAIL ON MAINTENANCE OF TRAFFIC DETAILS SHEET.
  - SEE CROSS SECTIONS FOR GRADING DETAILS.
  - SEE MAINTENANCE OF TRAFFIC GENERAL NOTE 25.
  - SEE EROSION CONTROL PLANS FOR INFORMATION.
  - SEE DRAINAGE PLANS FOR TYPE, SIZE, AND LOCATION.
  - PROPOSED 30" STORM SEWER SHALL BE TEMPORARILY CONNECTED TO EXISTING CULVERT AS APPROVED BY THE ENGINEER. COST OF TEMPORARY CONNECTION SHALL BE CONSIDERED INCLUDED IN THE UNIT PRICE OF "STORM SEWER, CLASS A, TYPE 1, 30"
  - SEE MAINTENANCE OF TRAFFIC GENERAL NOTE 27.

ILLINOIS DEPARTMENT OF TRANSPORTATION  
 DISTRICT NO. 1 SCHAUMBURG  
 STAGING PLANS  
 ILLINOIS ROUTE 59  
 PRE-STAGE 1A

SCALE AS SHOWN  
 DATE MARCH 18, 2008

DRAWN BY REW  
 CHECKED BY JCM

