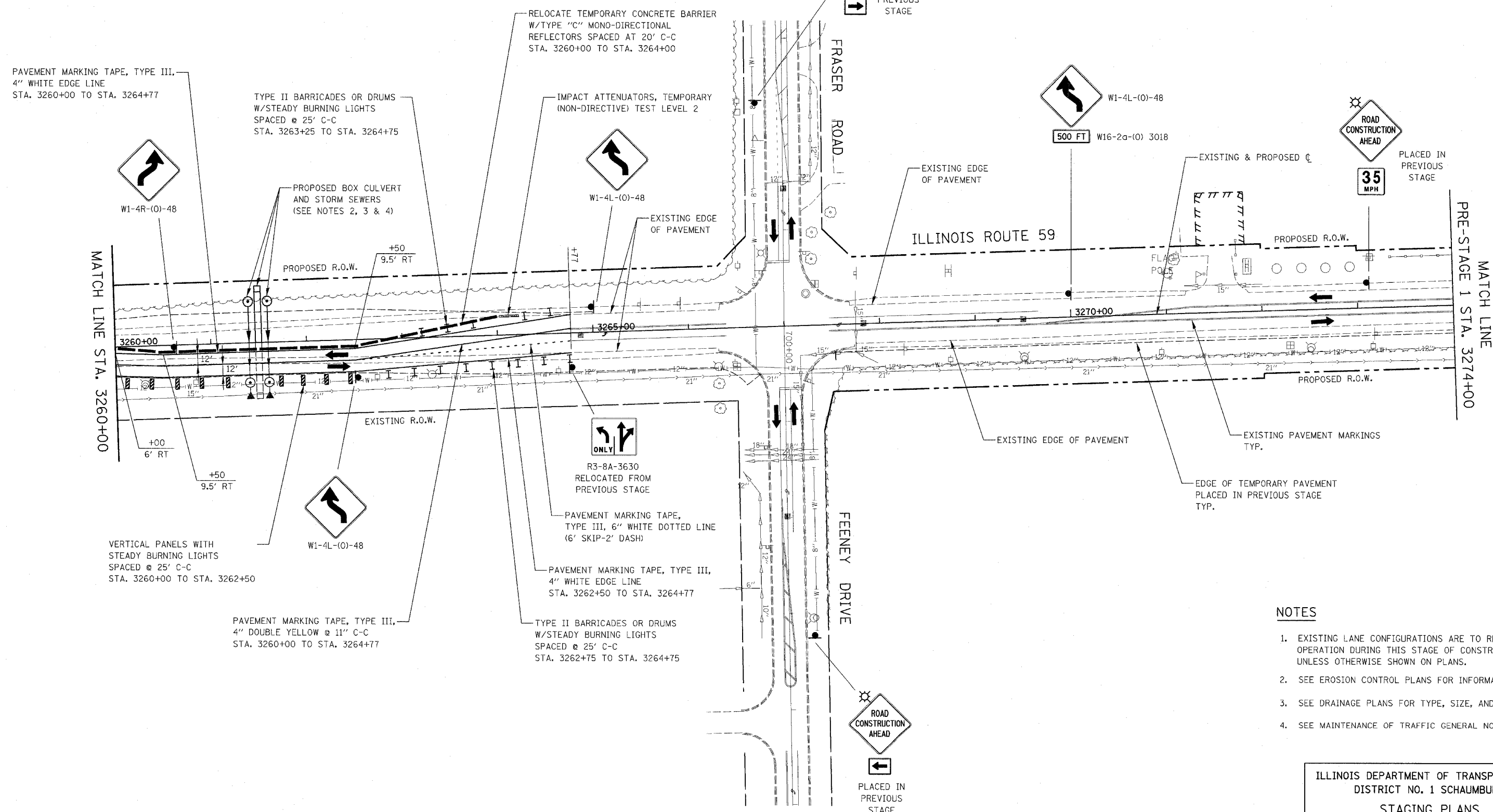


| FAP NO. | SECTION | COUNTY | TOTAL SHEETS | SHEET NO. |
|---------------------|-----------------|----------------------|--------------|-----------|
| 338 | (113 & 114) R-5 | WILL | 525 | 93 |
| STA. 3260+00 | | TO STA. 3274+00 | | |
| FED. ROAD DIST. NO. | ILLINOIS | FAP 338 (IL RTE. 59) | | |



NOTES

1. EXISTING LANE CONFIGURATIONS ARE TO REMAIN IN OPERATION DURING THIS STAGE OF CONSTRUCTION UNLESS OTHERWISE SHOWN ON PLANS.
2. SEE EROSION CONTROL PLANS FOR INFORMATION.
3. SEE DRAINAGE PLANS FOR TYPE, SIZE, AND LOCATION.
4. SEE MAINTENANCE OF TRAFFIC GENERAL NOTE 27.



ILLINOIS DEPARTMENT OF TRANSPORTATION
 DISTRICT NO. 1 SCHAUMBURG
STAGING PLANS
 ILLINOIS ROUTE 59
 PRE-STAGE 1B

SCALE AS SHOWN
 DATE MARCH 18, 2008

DRAWN BY REW
 CHECKED BY JCM