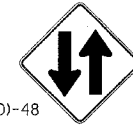


FAP DIST.	SECTION	COUNTY	TOTAL SHEETS	SHEET NO.
338	(113 & 114) R-5	WILL	525	99
STA. 3260+00		TO STA. 3274+00		
FED. ROAD DIST. NO.		ILLINOIS FAP 338 (IL RTE. 59)		



W6-3-(0)-48

TEMPORARY PAVEMENT MARKING
4" DOUBLE YELLOW @ 11" C-C
W/ TEMPORARY RAISED PAVEMENT
MARKERS @ 40' C-C
STA. 3260+00 TO STA. 3260+71

TEMPORARY PAVEMENT MARKING,
4" WHITE EDGE LINE
STA. 3260+00 TO STA. 3267+06

TEMPORARY PAVEMENT MARKING
4" YELLOW EDGE LINES
STA. 3260+71 TO STA. 3265+20

TEMPORARY PAVEMENT MARKING
4" DOUBLE YELLOW @ 11" C-C
W/ TEMPORARY RAISED PAVEMENT
MARKERS @ 40' C-C
STA. 3265+20 TO STA. 3266+55

TYPE II BARRICADES OR DRUMS
W/STEADY BURNING LIGHTS
SPACED @ 50' C-C
STA. 3260+00 TO STA. 3267+06
(SPACED AT 25' C-C ALONG
CORNER RADIUS TYP.)

SEE STAGE 1 STAGING PLAN
FOR
FRASER RD./FEENEY DR.

TYPE II BARRICADES OR DRUMS
W/STEADY BURNING LIGHTS
SPACED @ 50' C-C
STA. 3267+28 TO STA. 3274+00

TEMPORARY PAVEMENT MARKING,
6" WHITE EDGE LINE

TEMPORARY PAVEMENT MARKING,
4" WHITE EDGE LINE
STA. 3267+31 TO STA. 3274+00

TEMPORARY PAVEMENT
(SEE NOTE 2)

TEMPORARY PAVEMENT MARKING
4" YELLOW EDGE LINES
STA. 3268+81 TO STA. 3273+31

TEMPORARY PAVEMENT MARKING
4" DOUBLE YELLOW @ 11" C-C
W/TEMPORARY RAISED PAVEMENT
MARKERS @ 40' C-C
STA. 3273+31 TO STA. 3274+00



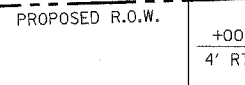
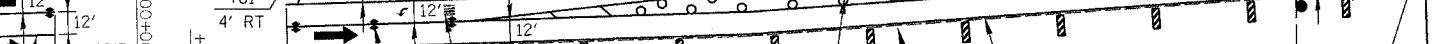
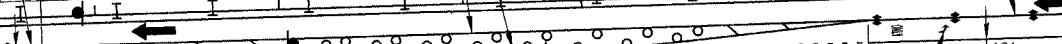
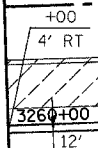
R3-8L-3636

SEE NOTE 1

PROPOSED R.O.W.

MATCH LINE STA. 3274+00

MATCH LINE STA. 3260+00



PROPOSED R.O.W.

EXISTING & PROPOSED C

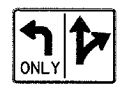
ILLINOIS RTE 59

EXISTING R.O.W.

TEMPORARY
PAVEMENT MARKING,
6" WHITE DOTTED LINE
(6' SKIP-2' DASH), TYP.

TEMPORARY
PAVEMENT MARKING,
LETTERS & SYMBOLS

TEMPORARY PAVEMENT MARKING,
4" WHITE EDGE LINE
STA. 3260+00 TO STA. 3266+99



R3-8L-3636

TEMPORARY PAVEMENT MARKING,
6" WHITE EDGE LINE

TEMPORARY PAVEMENT MARKING,
LETTERS & SYMBOLS

TEMPORARY PAVEMENT MARKING
4" DOUBLE YELLOW @ 11" C-C
W/ TEMPORARY RAISED PAVEMENT
MARKERS @ 40' C-C
STA. 3267+81 TO 3268+81

VERTICAL PANELS W/STEADY
BURNING LIGHTS SPACED @ 50' C-C
STA. 3267+28 TO STA. 3274+00
(SPACED AT 25' C-C ALONG
CORNER RADIUS TYP.)

DRUMS W/STEADY BURNING LIGHTS
SPACED @ 25' C-C IN MEDIAN

TEMPORARY PAVEMENT MARKING,
4" WHITE EDGE LINE
STA. 3267+28 TO STA. 3274+00

TEMPORARY PAVEMENT
PLACED IN PREVIOUS STAGE



W6-3-(0)-48

TEMPORARY PAVEMENT
PLACED IN PREVIOUS STAGE

TYPE II BARRICADES OR DRUMS
W/STEADY BURNING LIGHTS
SPACED @ 50' C-C
STA. 3260+00 TO STA. 3262+00



R4-7b-3648

TEMPORARY PAVEMENT MARKING,
12" YELLOW DIAGONALS
SPACED @ 30' C-C, TYP.

VERTICAL PANELS W/STEADY BURNING
LIGHTS SPACED @ 50' C-C
STA. 3262+50 TO STA. 3266+50

DRUMS W/STEADY BURNING LIGHTS
SPACED @ 25' C-C IN MEDIAN

NOTES

1. SEE MAINTENANCE OF TRAFFIC GENERAL NOTE 26.
2. TEMPORARY PAVEMENT SHALL BE CONSTRUCTED TO CONNECT PROPOSED NEW PAVEMENT TO THE EXISTING PAVEMENT.
3. DRIVEWAY CLOSED AT THE RIGHT-OF-WAY IN PREVIOUS STAGE, TO REMAIN CLOSED IN THIS STAGE.
4. SEE MAINTENANCE OF TRAFFIC GENERAL NOTES 35 & 36

ILLINOIS DEPARTMENT OF TRANSPORTATION
DISTRICT NO. 1 SCHAUMBURG
STAGING PLANS
ILLINOIS ROUTE 59
STAGE 1



SCALE IN FEET

Rev. 05-01-08 JCM

SCALE AS SHOWN
DATE MARCH 18, 2008
DRAWN BY REW
CHECKED BY JCM