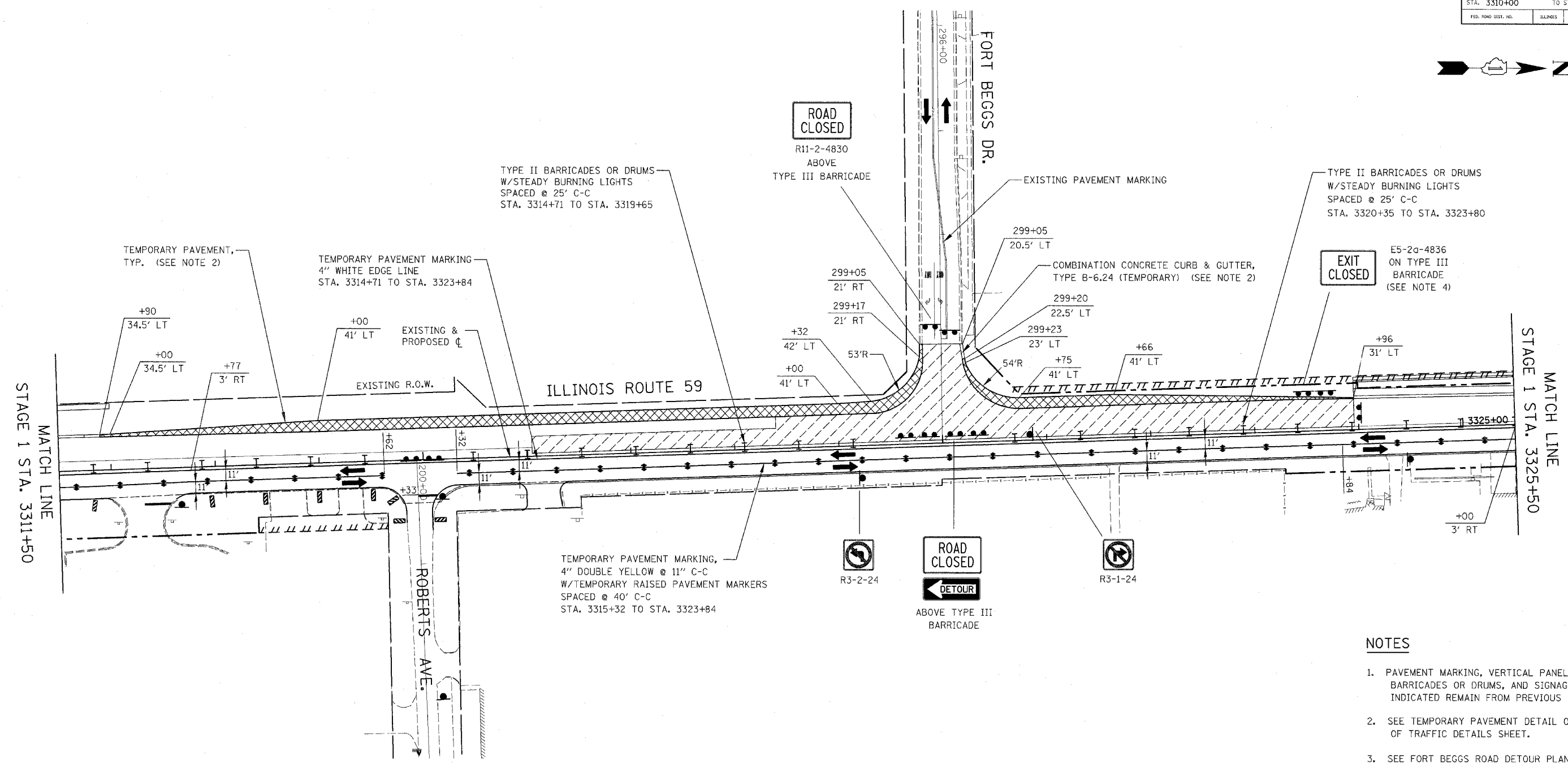
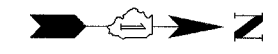


CONTRACT NO. 62417

| FAP NO. | SECTION | COUNTY | TOTAL SHEETS | SHEET NO. |
|---------------------|-----------------|-----------------|----------------------|-----------|
| 338 | (113 & 114) R-5 | WILL | 525 | 112 |
| STA. 3310+00 | | TO STA. 3324+00 | | |
| FED. ROAD DIST. NO. | | ILLINOIS | FAP 338 (IL RTE. 59) | |



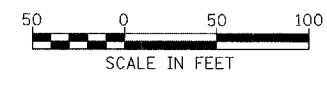
NOTES

1. PAVEMENT MARKING, VERTICAL PANELS, TYPE II BARRICADES OR DRUMS, AND SIGNAGE NOT INDICATED REMAIN FROM PREVIOUS STAGE.
2. SEE TEMPORARY PAVEMENT DETAIL ON MAINTENANCE OF TRAFFIC DETAILS SHEET.
3. SEE FORT BEGGS ROAD DETOUR PLAN FOR DETOUR SIGNING.
4. DRIVEWAY SHALL BE CLOSED AT THE RIGHT-OF-WAY DURING THIS STAGE.
5. SEE TEMPORARY CURB AND GUTTER DETAIL ON MAINTENANCE OF TRAFFIC DETAILS SHEET.
6. SEE MAINTENANCE OF TRAFFIC GENERAL NOTES 35 & 36.

ILLINOIS DEPARTMENT OF TRANSPORTATION
 DISTRICT NO. 1 SCHAUMBURG
 STAGING PLANS
 ILLINOIS ROUTE 59
 STAGE 1A

SCALE AS SHOWN
 DATE MARCH 18, 2008

DRAWN BY REW
 CHECKED BY JCM



Rev. 05-01-08 JCM