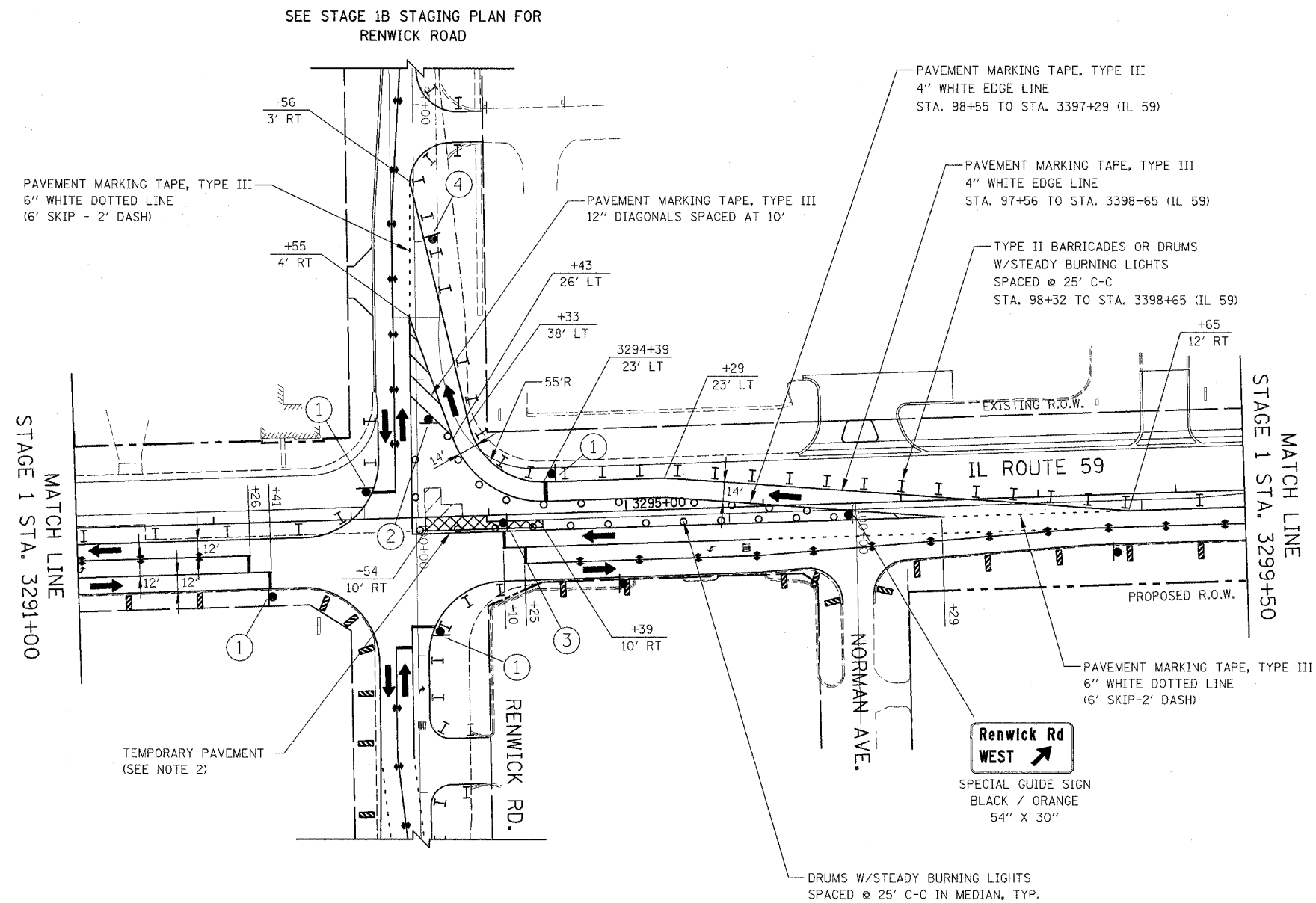


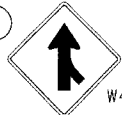





FAP RTE.	SECTION	COUNTY	TOTAL SHEETS	SHEET NO.
338	(113 & 114) R-5	WILL	525	116
STA. 3291+00		TO STA. 3299+50		
FED. ROAD DIST. NO.		ILLINOIS FAP 338 (IL RTE. 59)		

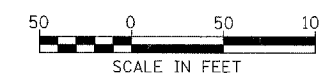


SIGN LEGEND

- | | |
|---|--|
| <p>①  R10-6-2436</p> <p> R10-11b-30</p> <p>②  W4-10-48</p> | <p>③  R10-6-2436</p> <p> R3-1-24</p> <p>④  R5-1-36</p> |
|---|--|

NOTES

- PAVEMENT MARKING, VERTICAL PANELS, TYPE II BARRICADES OR DRUMS, AND SIGNAGE NOT INDICATED REMAIN FROM PREVIOUS STAGE.
- TEMPORARY PAVEMENT SHALL BE CONSTRUCTED TO CONNECT PROPOSED NEW PAVEMENT TO THE EXISTING PAVEMENT.



ILLINOIS DEPARTMENT OF TRANSPORTATION
DISTRICT NO. 1 SCHAUMBURG
STAGING PLANS
ILLINOIS ROUTE 59
STAGE 1C

SCALE AS SHOWN DRAWN BY REW
DATE MARCH 18, 2008 CHECKED BY HME