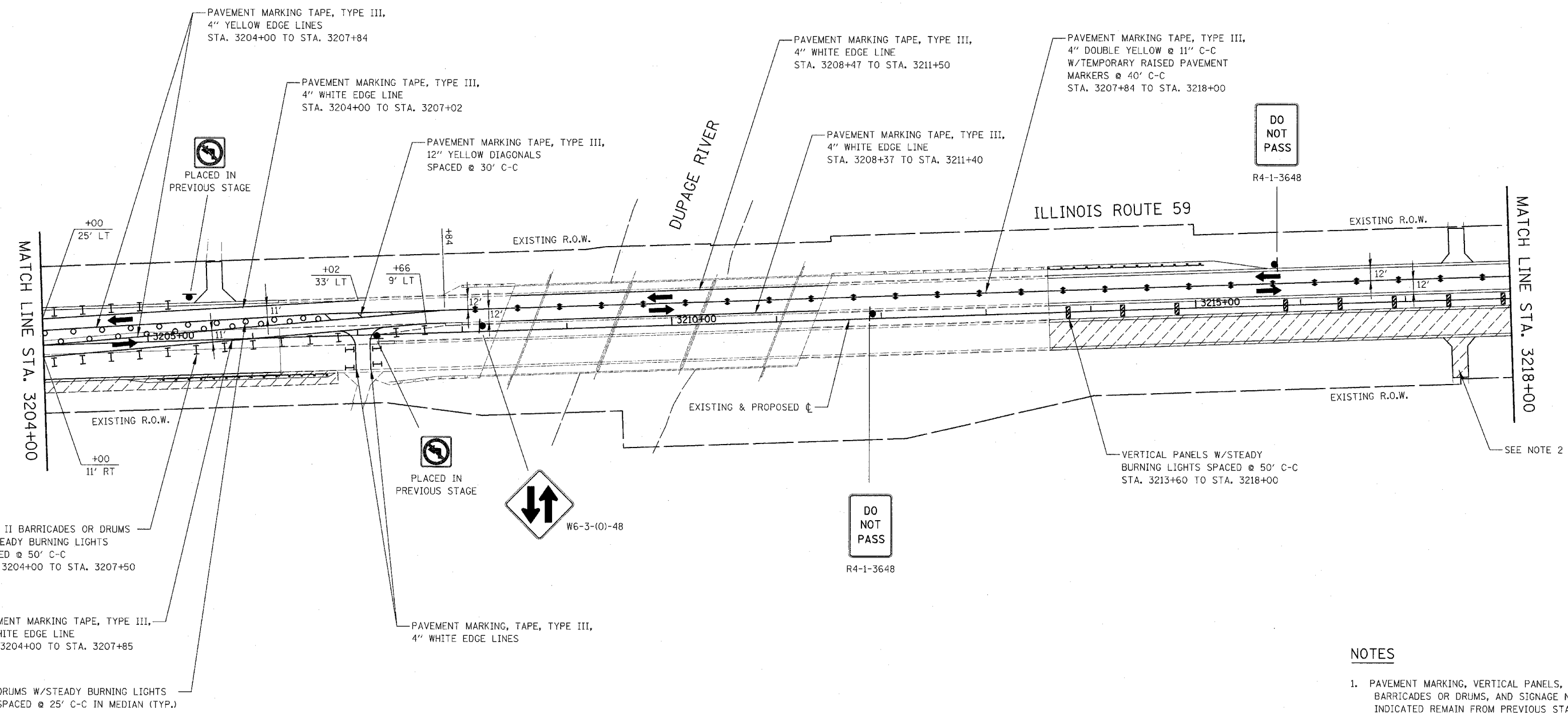
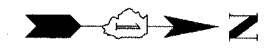


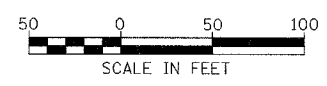
FAP NO.	SECTION	COUNTY	TOTAL SHEETS	SHEET NO.
338	(113 & 114) R-5	WILL	525	118
STA. 3204+00		TO STA. 3218+00		
FED. ROAD DIST. NO.		ILLINOIS	FAP 338 (IL RTE. 59)	



NOTES

1. PAVEMENT MARKING, VERTICAL PANELS, TYPE II BARRICADES OR DRUMS, AND SIGNAGE NOT INDICATED REMAIN FROM PREVIOUS STAGE.
2. SEE MAINTENANCE OF TRAFFIC GENERAL NOTE 26.
3. SEE MAINTENANCE OF TRAFFIC GENERAL NOTES 35 & 36.

ILLINOIS DEPARTMENT OF TRANSPORTATION
 DISTRICT NO. 1 SCHAUMBURG
 STAGING PLANS
 ILLINOIS ROUTE 59
 STAGE 2



Rev. 05-01-08 JCM

SCALE AS SHOWN
 DATE MARCH 18, 2008
 DRAWN BY REW
 CHECKED BY JCM