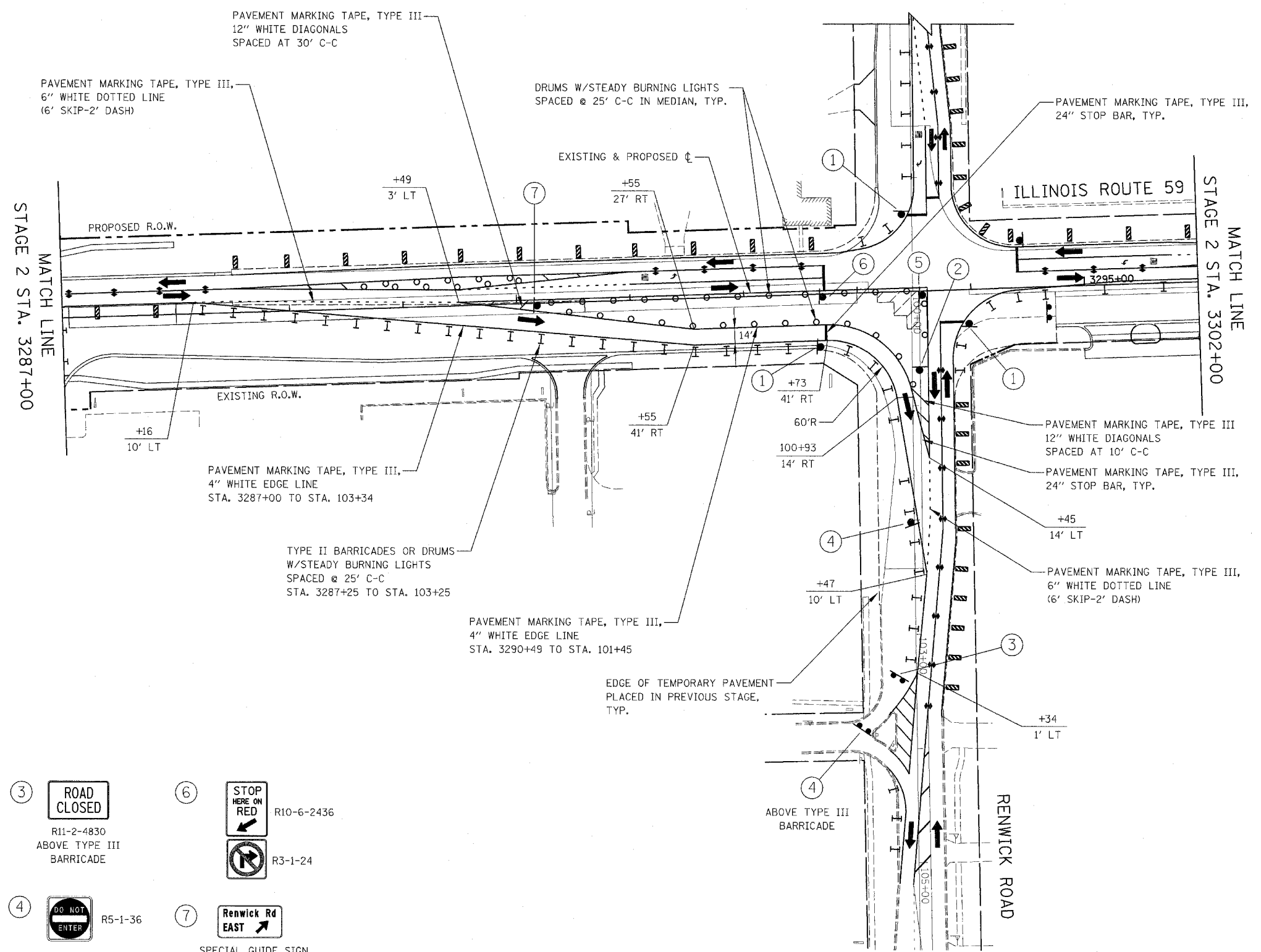
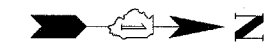


TWP	SECTION	COUNTY	TOTAL SHEETS	SHEET NO.
338	(113 & 114) R-5	WILL	525	131
STA. 3287+00		TO STA. 3302+00		
FED. ROAD DIST. NO.		ILLINOIS	FAP 338 (IL RTE. 59)	

FOR STAGING PLAN ON RENWICK ROAD
SEE STAGE 2 PLANS

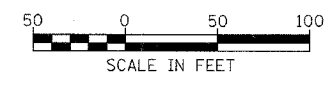


SIGN LEGEND

- ① R10-6-2436
- ② R10-11b-30
- ③ R11-2-4830 ABOVE TYPE III BARRICADE
- ④ R5-1-36
- ⑤ R3-1-24
- ⑥ R10-6-2436
- ⑦ R3-1-24
- ⑧ SPECIAL GUIDE SIGN BLACK / ORANGE 54" X 30"

NOTES

1. PAVEMENT MARKING, VERTICAL PANELS, TYPE II BARRICADES OR DRUMS, AND SIGNAGE NOT INDICATED REMAIN FROM PREVIOUS STAGE.



ILLINOIS DEPARTMENT OF TRANSPORTATION
DISTRICT NO. 1 SCHAUMBURG

STAGING PLANS
ILLINOIS ROUTE 59
STAGE 2A

SCALE AS SHOWN DRAWN BY REW
DATE MARCH 18, 2008 CHECKED BY JCM