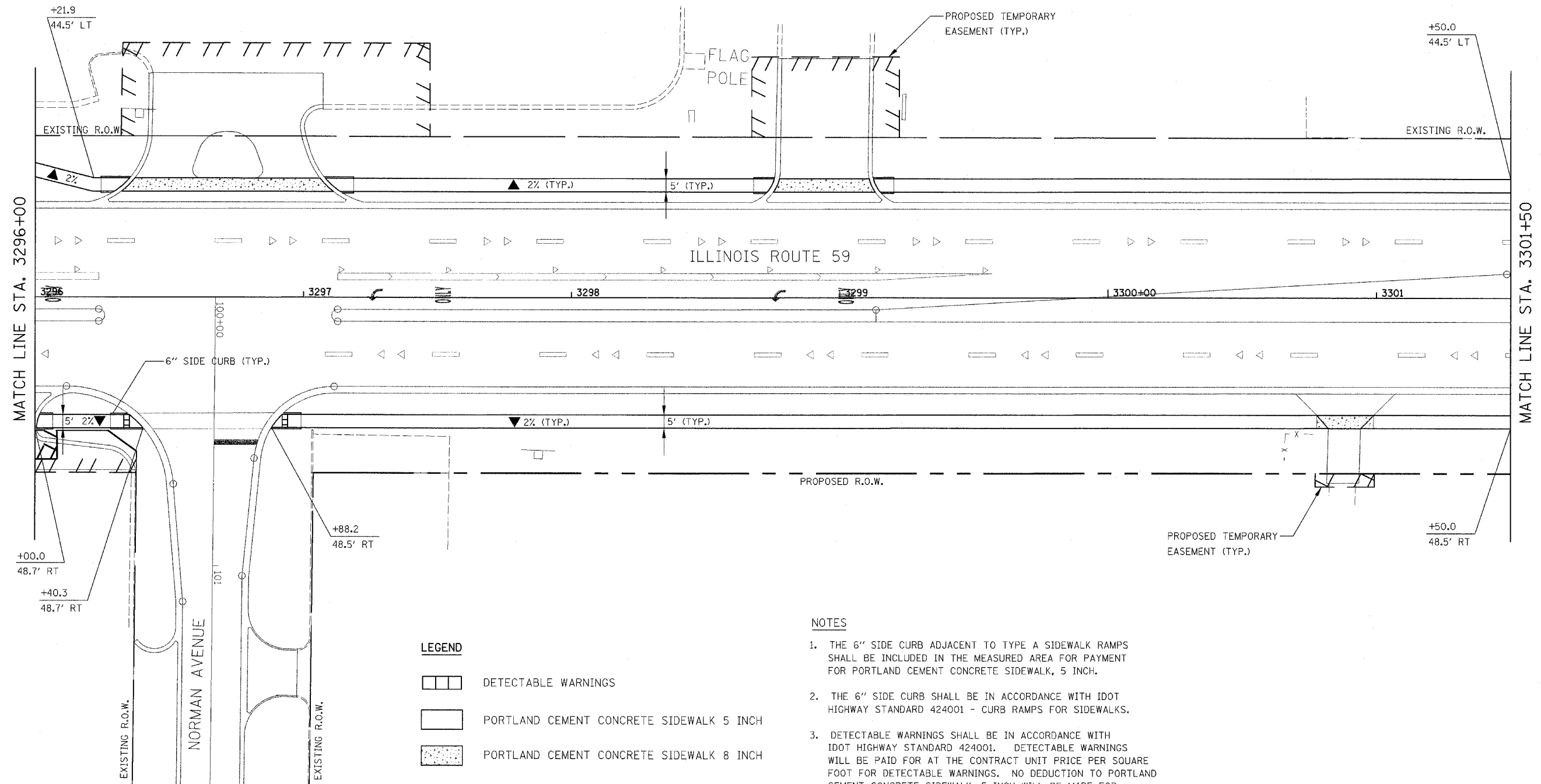
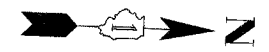


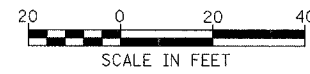
FED. PROJ. NO.	SECTION	COUNTY	TOTAL SHEETS	SHEET NO.
338 (113 & 114) R-5	WILL		525	203
STA.	TO STA.			
FED. ROAD DIST. NO.	ILLINOIS	FAP 338 (IL RTE. 59)		



**LEGEND**

	DETECTABLE WARNINGS
	PORTLAND CEMENT CONCRETE SIDEWALK 5 INCH
	PORTLAND CEMENT CONCRETE SIDEWALK 8 INCH
	CROSS SLOPE DIRECTION

- NOTES**
1. THE 6" SIDE CURB ADJACENT TO TYPE A SIDEWALK RAMPS SHALL BE INCLUDED IN THE MEASURED AREA FOR PAYMENT FOR PORTLAND CEMENT CONCRETE SIDEWALK, 5 INCH.
  2. THE 6" SIDE CURB SHALL BE IN ACCORDANCE WITH IDOT HIGHWAY STANDARD 424001 - CURB RAMPS FOR SIDEWALKS.
  3. DETECTABLE WARNINGS SHALL BE IN ACCORDANCE WITH IDOT HIGHWAY STANDARD 424001. DETECTABLE WARNINGS WILL BE PAID FOR AT THE CONTRACT UNIT PRICE PER SQUARE FOOT FOR DETECTABLE WARNINGS. NO DEDUCTION TO PORTLAND CEMENT CONCRETE SIDEWALK, 5 INCH WILL BE MADE FOR DETECTABLE WARNINGS LOCATED WITHIN THE RAMP.



ILLINOIS DEPARTMENT OF TRANSPORTATION  
DISTRICT NO. 1 SCHAUMBURG

**SIDEWALK PLANS**

SCALE  $\frac{1"}{20'}$   
DATE MARCH 18, 2008

DRAWN BY LL  
CHECKED BY PO