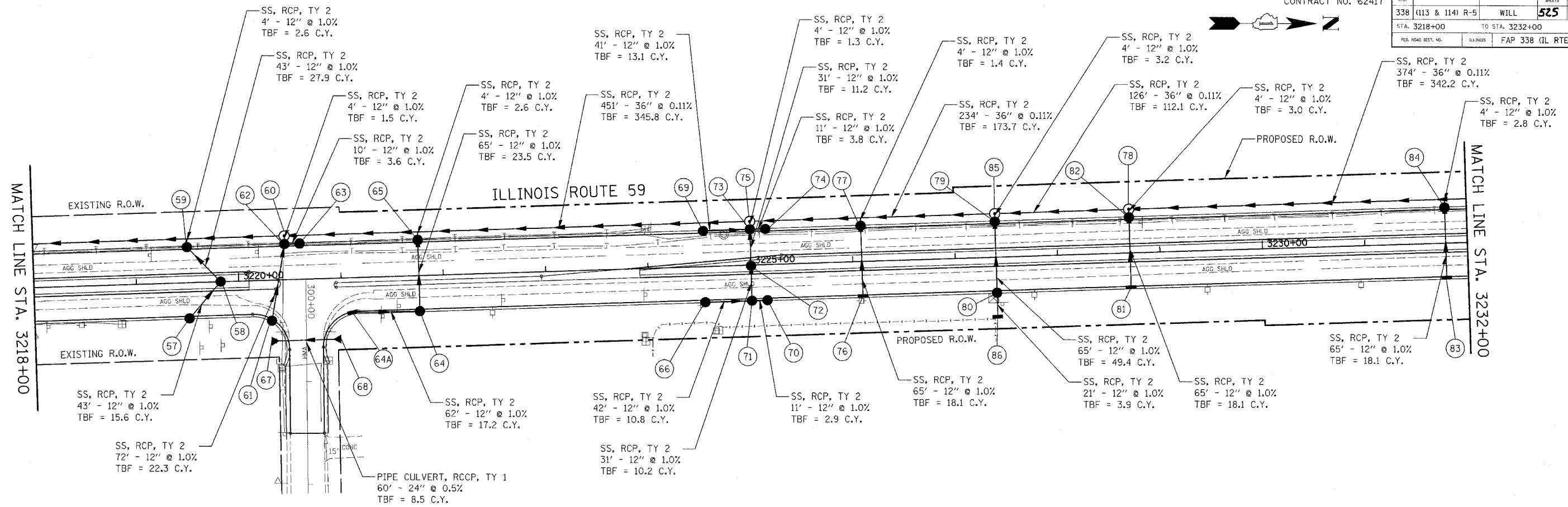


SECTION	COUNTY	TOTAL SHEETS	SHEET NO.
338 (113 & 114) R-5	WILL	525	229
STA. 3218+00 TO STA. 3232+00		FAP 338 (IL RTE. 59)	



STRUCTURE TABLE

NO.	STATION	OFFSET	TYPE	FRAME	RIM	N. INV.	S. INV.	E. INV.	W. INV.	NO.	STATION	OFFSET	TYPE	FRAME	RIM	N. INV.	S. INV.	E. INV.	W. INV.	NO.	STATION	OFFSET	TYPE	FRAME	RIM	N. INV.	S. INV.	E. INV.	W. INV.		
57	3219+51	35' RT	CB-A4	T-24	596.35				590.70	68	320+60	34' LT	FES-24	N/A	N/A	591.65				80	3227+40	35' RT	CB-A4	T-24	597.32			590.49	590.49		
58	3219+82	0	CB-A4	T-8	596.92			590.27	590.27	69	3224+55	35' LT	CB-A4	T-21	596.41	590.85				81	3228+70	34' RT	IN-A	T-24	597.97			592.97	592.97		
59	3219+51	35' LT	CB-A4	T-24	596.35			589.84	589.84	70	3225+16	35' RT	CB-A4	T-21	596.35	591.17				82	3228+70	35' LT	CB-A4	T-24	597.97			592.32	590.84		
60	3220+46	43' LT	MH-A5	T1-CL	596.20	588.90	588.90	589.90		71	3225+00	35' RT	CB-A4	T-21	596.35	591.06	591.06	591.06		83	3230+79	34' LT	IN-A	T-24	597.94			592.94	592.94		
61	3220+31	40' RT	CB-A4	T-24	595.63			590.66	590.66	72	3225+00	0	CB-A4	T-8	597.07			590.75	590.75	84	3230+79	35' RT	CB-A4	T-24	597.94			592.29	591.28		
62	3220+46	35' LT	CB-A4	T-21	596.08	589.94		589.94	589.94	73	3225+00	35' LT	CB-A4	T-21	596.35	590.44	590.44	590.44	590.44	85	3227+40	43' LT	MH-A5	T1-CL	597.07	589.66	589.66	589.80			
63	3220+61	35' LT	CB-A4	T-21	596.09		590.04			74	3225+16	35' LT	CB-A4	T-21	596.35	590.55			590.55	86	3227+40	58.5' RT	IN-A	T-8	592.70			590.70			
64	3221+76	35' RT	CB-A4	T-24	596.53			590.73	590.73	75	3225+00	43' LT	MH-A5	T1-CL	596.10	589.40	589.40	590.40													
64A	3221+10	34' RT	IN-A	T-24	596.14	591.35				76	3226+09	34' RT	IN-A	T-24	596.66			591.66	591.66												
65	3221+76	35' LT	CB-A4	T-24	596.53			590.08	590.08	77	3226+09	35' LT	CB-A4	T-24	596.66			591.01	590.55												
66	3224+55	35' RT	CB-A4	T-21	596.41	591.48				78	3228+71	43' LT	MH-A5	T1-CL	597.72	589.80	589.80	590.80	590.80												
67	300+60	34' RT	FES-24	N/A	N/A	591.35				79	3227+40	35' LT	CB-A4	T-24	597.32	589.84	589.84	589.84	589.84												

