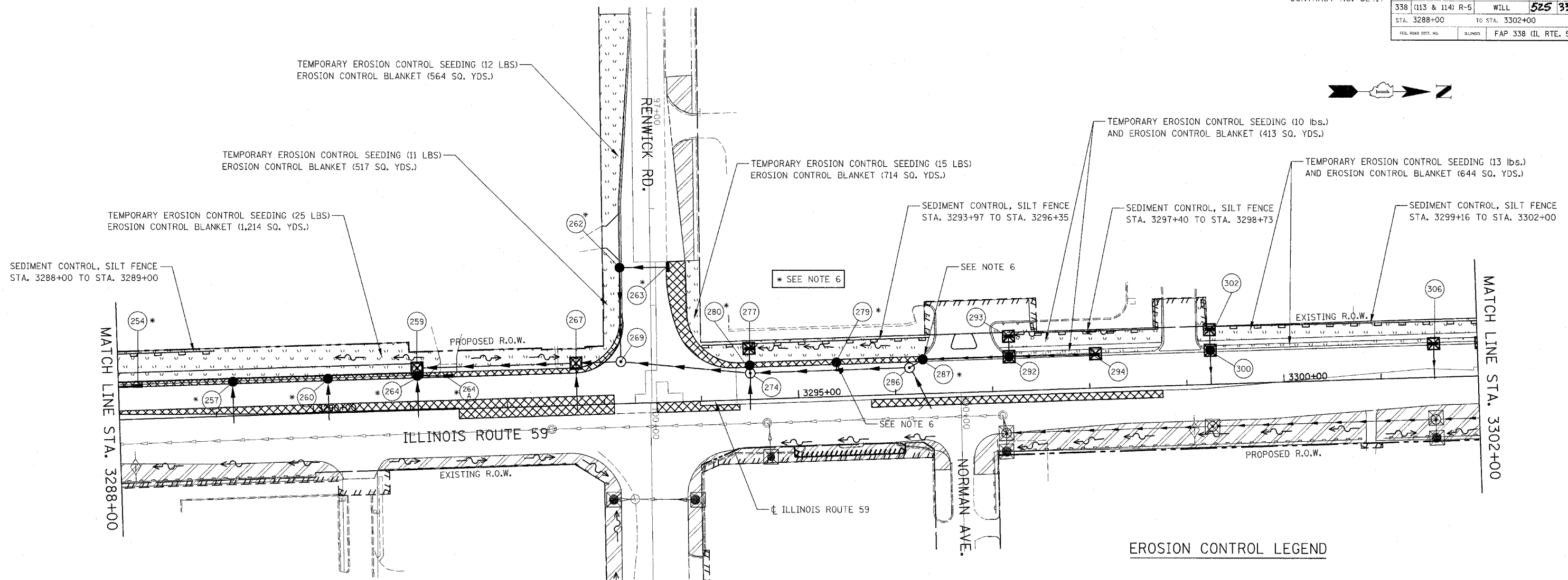


FAP DIST.	SECTION	COUNTY	TOTAL SHEETS	SHEET NO.
338	(113 & 114) R-5	WILL	525	338
STA. 3288+00		TO STA. 3302+00		
FED. ROAD DIST. NO.	BLANKETS	FAP 338 (IL RTE. 59)		



NOTES

1. THE CONSTRUCTION LIMITS WILL BE STAKED BY THE ENGINEER PRIOR TO COMMENCING CONSTRUCTION. THE CONSTRUCTION LIMITS MAY BE ADJUSTED BY THE ENGINEER TO PRESERVE TREES AND NO ADDITIONAL COMPENSATION WILL BE PAID TO THE CONTRACTOR FOR CHANGED CONSTRUCTION LIMITS.

2. SEDIMENT CONTROL, SILT FENCE SHALL BE ERECTED ADJACENT TO R.O.W., EASEMENT, AND CONSTRUCTION LIMITS AND AS DIRECTED BY THE ENGINEER.

3. SEE LANDSCAPING PLANS FOR LANDSCAPING REQUIREMENTS.

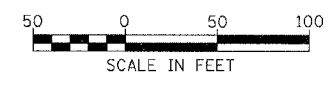
4. SEE STAGE 1 CROSS SECTIONS FOR GRADING INFORMATION.

5. SEE PROPOSED DRAINAGE PLANS FOR STORM SEWER INFORMATION.

6. PROPOSED STRUCTURE SHALL BE BURIED AND TEMPORARILY COVERED WITH STEEL PLATE OF 0.25 INCH MINIMUM THICKNESS OR OF THICKNESS SPECIFIED AND APPROVED BY THE ENGINEER. PAYMENT FOR THE INSTALLATION AND REMOVAL OF THE STEEL PLATE INCLUDING ANY REQUIRED EXCAVATION SHALL BE CONSIDERED INCLUDED IN THE COST OF THE PROPOSED STRUCTURE.

EROSION CONTROL LEGEND

	TEMPORARY EROSION CONTROL SEEDING AND EROSION CONTROL BLANKET		TEMPORARY DITCH CHECK
	TEMPORARY EROSION CONTROL SEEDING AND EROSION CONTROL BLANKET INSTALLED IN PREVIOUS STAGE		TEMPORARY DITCH CHECK INSTALLED IN PREVIOUS STAGE
	PERMANENT LANDSCAPING (SEE NOTE 3)		FLOW DIRECTION (SEE NOTE 4)
	TEMPORARY PAVEMENT		PERMANENT DRAINAGE STRUCTURE NUMBER (SEE NOTE 5)
	DRAINAGE STRUCTURE TO BE CLEANED		PROPOSED STORM SEWER (SEE NOTE 5)
	SEDIMENT CONTROL, SILT FENCE (SEE NOTE 2)		PROPOSED STORM SEWER INSTALLED IN PREVIOUS STAGE
	SEDIMENT CONTROL SILT FENCE INSTALLED IN PREVIOUS STAGE		TEMPORARY PIPE CULVERT
	INLET FILTER		TEMPORARY PIPE CULVERT INSTALLED IN PREVIOUS STAGE
	INLET FILTER INSTALLED IN PREVIOUS STAGE		



ILLINOIS DEPARTMENT OF TRANSPORTATION
DISTRICT NO. 1 SCHAUMBURG
EROSION CONTROL PLAN
STAGE 1, 1A, 1B AND 1C
ILLINOIS ROUTE 59
SCALE AS SHOWN
DATE MARCH 18, 2008
DRAWN BY BSB
CHECKED BY HME