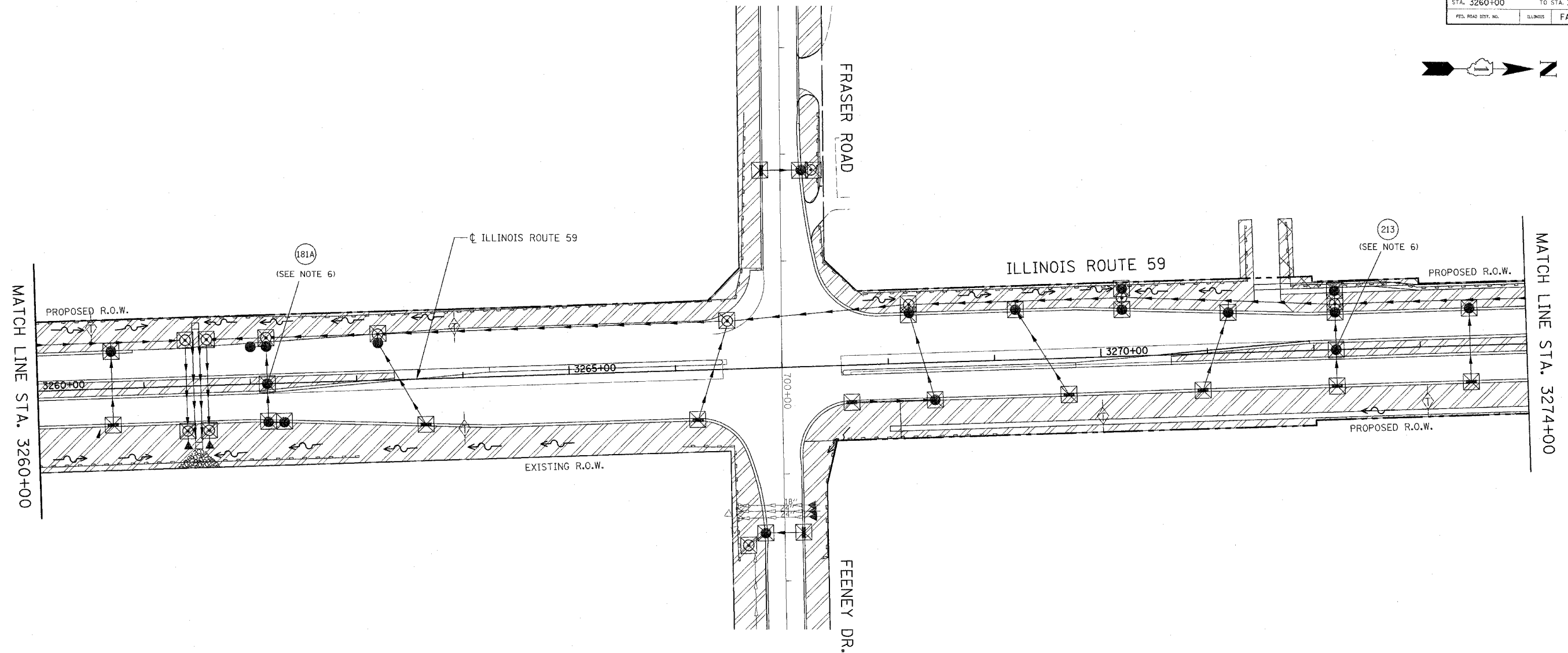
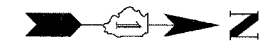


CONTRACT NO. 62417

FAP NO.	SECTION	COUNTY	TOTAL SHEETS	SHEET NO.
338	(113 & 114) R-5	WILL	525	356
STA. 3260+00		TO STA. 3274+00		
FED. ROAD DIST. NO.	ILLINOIS	FAP 338 (IL RTE. 59)		

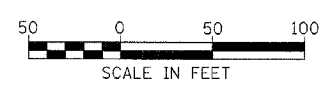


EROSION CONTROL LEGEND

- | | | | |
|--|---|--|--|
| | TEMPORARY EROSION CONTROL SEEDING AND EROSION CONTROL BLANKET | | TEMPORARY DITCH CHECK |
| | TEMPORARY EROSION CONTROL SEEDING AND EROSION CONTROL BLANKET INSTALLED IN PREVIOUS STAGE | | TEMPORARY DITCH CHECK INSTALLED IN PREVIOUS STAGE |
| | PERMANENT LANDSCAPING (SEE NOTE 3) | | FLOW DIRECTION (SEE NOTE 4) |
| | DRAINAGE STRUCTURE TO BE CLEANED | | PERMANENT DRAINAGE STRUCTURE NUMBER (SEE NOTE 5) |
| | SEDIMENT CONTROL, SILT FENCE (SEE NOTE 2) | | PROPOSED STORM SEWER (SEE NOTE 5) |
| | SEDIMENT CONTROL SILT FENCE INSTALLED IN PREVIOUS STAGE | | PROPOSED STORM SEWER INSTALLED IN PREVIOUS STAGE |
| | INLET FILTER | | TEMPORARY PIPE CULVERT |
| | INLET FILTER INSTALLED IN PREVIOUS STAGE | | TEMPORARY PIPE CULVERT INSTALLED IN PREVIOUS STAGE |

NOTES

1. THE CONSTRUCTION LIMITS WILL BE STAKED BY THE ENGINEER PRIOR TO COMMENCING CONSTRUCTION. THE CONSTRUCTION LIMITS MAY BE ADJUSTED BY THE ENGINEER TO PRESERVE TREES AND NO ADDITIONAL COMPENSATION WILL BE PAID TO THE CONTRACTOR FOR CHANGED CONSTRUCTION LIMITS.
2. SEDIMENT CONTROL, SILT FENCE SHALL BE ERECTED ADJACENT TO R.O.W., EASEMENT, AND CONSTRUCTION LIMITS AND AS DIRECTED BY THE ENGINEER.
3. SEE LANDSCAPING PLANS FOR LANDSCAPING REQUIREMENTS.
4. SEE STAGE 3 OF THE FINAL CROSS SECTIONS FOR GRADING INFORMATION.
5. SEE PROPOSED DRAINAGE PLANS FOR STORM SEWER INFORMATION.
6. ANY REQUIRED ADJUSTMENT AND/OR RECONSTRUCTION OF THE PROPOSED STRUCTURE TO FINAL RIM ELEVATION SHALL NOT BE PAID FOR SEPARATELY. THE COST FOR THIS WORK SHALL BE CONSIDERED INCLUDED IN THE COST OF THE PROPOSED STRUCTURE.



ILLINOIS DEPARTMENT OF TRANSPORTATION
 DISTRICT NO. 1 SCHAUMBURG
 EROSION CONTROL PLAN
 STAGES 3, 3A AND 3B
 ILLINOIS ROUTE 59

SCALE AS SHOWN
 DATE MARCH 18, 2008

DRAWN BY REW
 CHECKED BY JCM