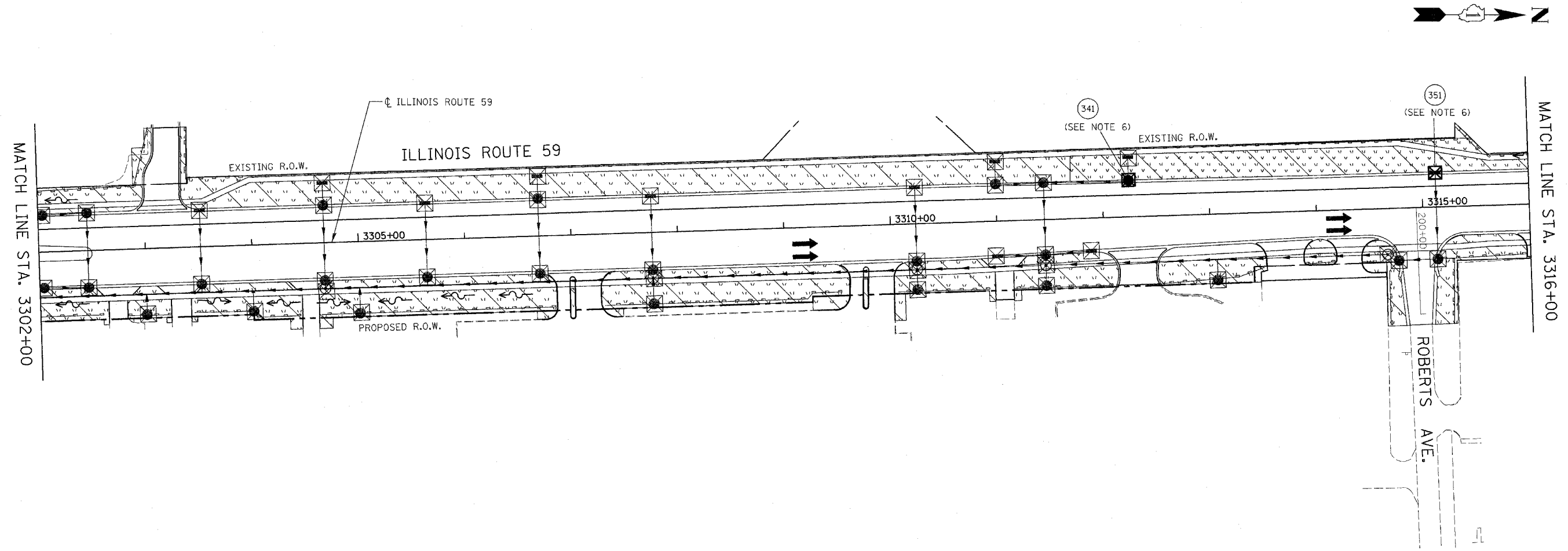


FAP NO.	SECTION	COUNTY	TOTAL SHEETS	SHEET NO.
338	(113 & 114) R-5	WILL	525	360
STA. 3302+00		TO STA. 3316+00		
FEB. ROAD DIST. NO.		ILLINOIS FAP 338 (IL RTE. 59)		



EROSION CONTROL LEGEND

	TEMPORARY EROSION CONTROL SEEDING AND EROSION CONTROL BLANKET		TEMPORARY DITCH CHECK
	TEMPORARY EROSION CONTROL SEEDING AND EROSION CONTROL BLANKET INSTALLED IN PREVIOUS STAGE		TEMPORARY DITCH CHECK INSTALLED IN PREVIOUS STAGE
	PERMANENT LANDSCAPING (SEE NOTE 3)		FLOW DIRECTION (SEE NOTE 4)
	PERMANENT LANDSCAPING INSTALLED IN PREVIOUS STAGE		PERMANENT DRAINAGE STRUCTURE NUMBER (SEE NOTE 5)
	DRAINAGE STRUCTURE TO BE CLEANED		PROPOSED STORM SEWER (SEE NOTE 5)
	SEDIMENT CONTROL, SILT FENCE (SEE NOTE 2)		PROPOSED STORM SEWER INSTALLED IN PREVIOUS STAGE
	SEDIMENT CONTROL SILT FENCE INSTALLED IN PREVIOUS STAGE		TEMPORARY PIPE CULVERT
	INLET FILTER		TEMPORARY PIPE CULVERT INSTALLED IN PREVIOUS STAGE
	INLET FILTER INSTALLED IN PREVIOUS STAGE		

NOTES

1. THE CONSTRUCTION LIMITS WILL BE STAKED BY THE ENGINEER PRIOR TO COMMENCING CONSTRUCTION. THE CONSTRUCTION LIMITS MAY BE ADJUSTED BY THE ENGINEER TO PRESERVE TREES AND NO ADDITIONAL COMPENSATION WILL BE PAID TO THE CONTRACTOR FOR CHANGED CONSTRUCTION LIMITS.

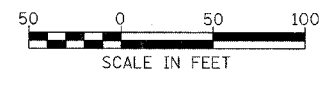
2. SEDIMENT CONTROL, SILT FENCE SHALL BE ERECTED ADJACENT TO R.O.W., EASEMENT AND CONSTRUCTION LIMITS AND AS DIRECTED BY THE ENGINEER.

3. SEE LANDSCAPING PLANS FOR SEEDING INFORMATION.

4. SEE STAGE 4 OF FINAL CROSS SECTIONS FOR GRADING INFORMATION.

5. SEE PROPOSED DRAINAGE PLANS FOR STORM SEWER INFORMATION.

6. ANY REQUIRED ADJUSTMENT AND/OR RECONSTRUCTION OF THE PROPOSED STRUCTURE TO FINAL RIM ELEVATION SHALL NOT BE PAID FOR SEPERATELY. THE COST FOR THIS WORK SHALL BE INCLUDED IN THE COST OF THE PROPOSED STRUCTURE.



ILLINOIS DEPARTMENT OF TRANSPORTATION
 DISTRICT NO. 1 SCHAUMBURG
 EROSION CONTROL PLAN
 STAGES 4, & 4A
 ILLINOIS ROUTE 59

SCALE AS SHOWN
 DATE MARCH 18, 2008

DRAWN BY BSB
 CHECKED BY JCM