

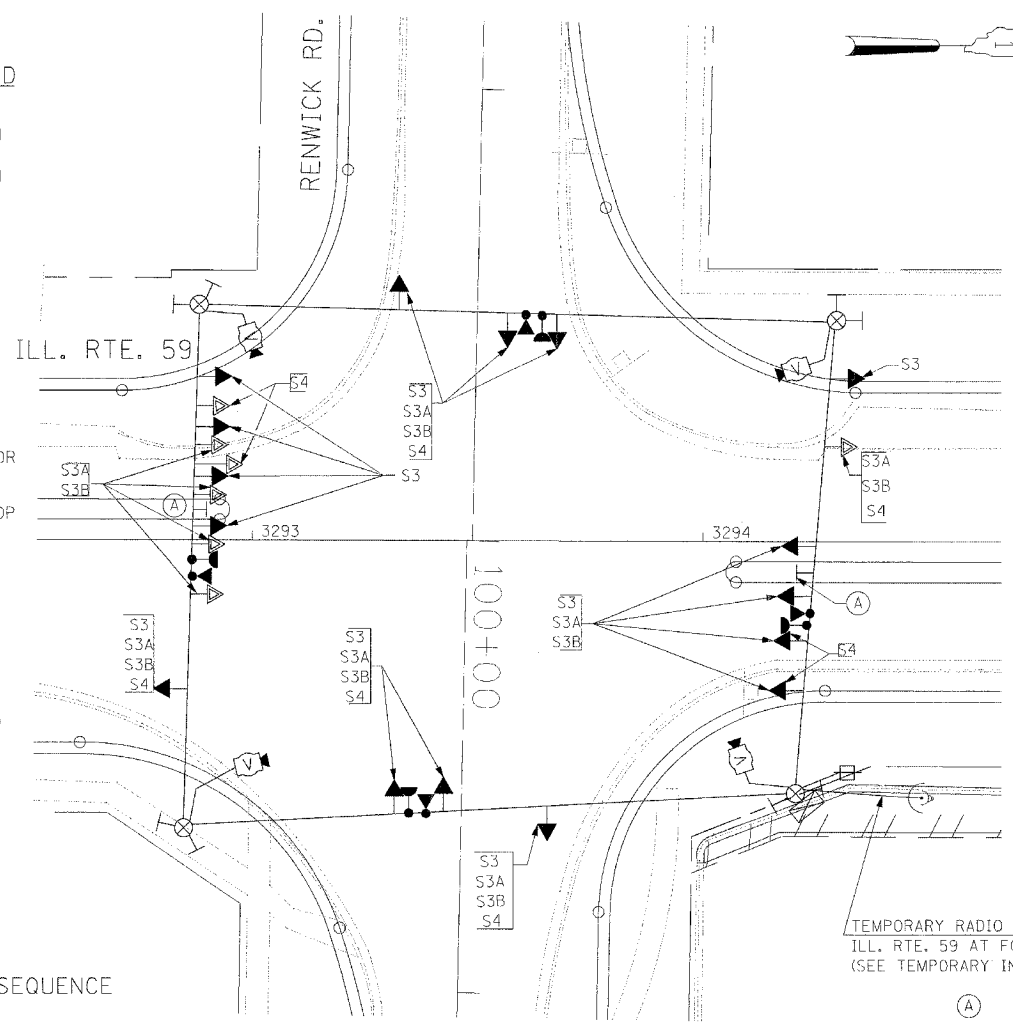
F.A.P. RTE.	SECTION	COUNTY	TOTAL SHEETS	SHEET NO.
338	(113 & 114)R-5	WILL	525	374
STA.	TO STA.			
FED. ROAD DIST. NO. 1	ILLINOIS FED. AID PROJECT:			
CONTRACT # 62417				

TEMPORARY TRAFFIC SIGNAL LEGEND

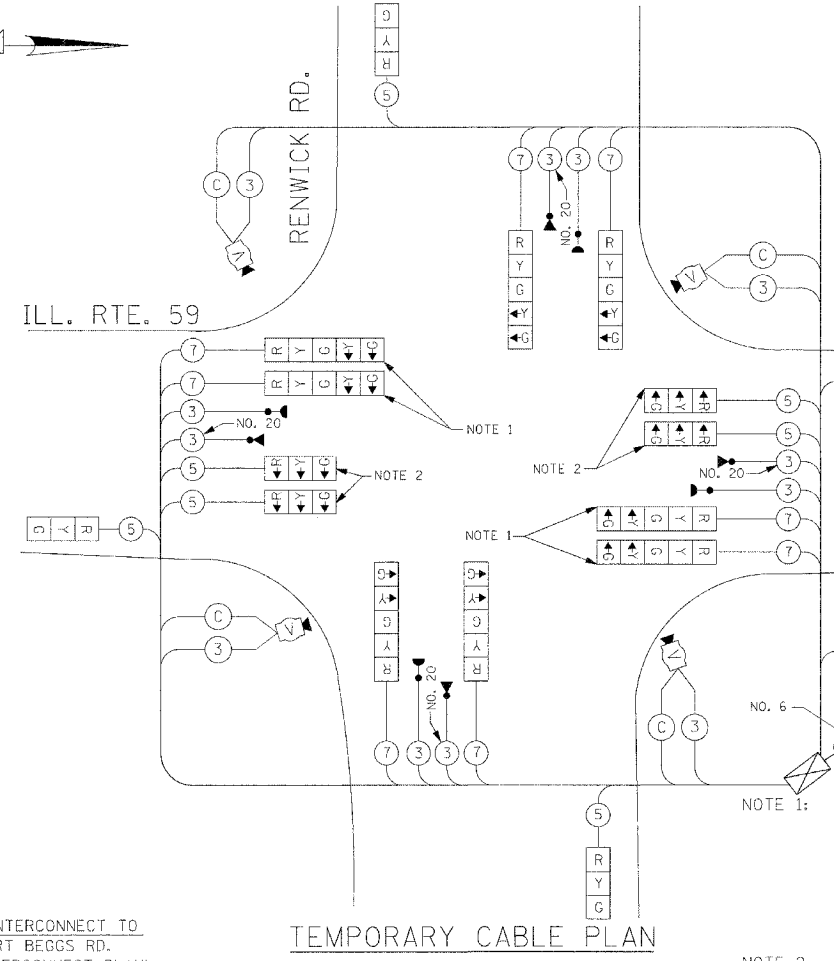
- ← TEMPORARY TRAFFIC SIGNAL HEAD SPAN WIRE MOUNTED ORIGINAL LOCATION
- ↔ TEMPORARY TRAFFIC SIGNAL HEAD SPAN WIRE MOUNTED SECONDARY LOCATION
- ⊗ TEMPORARY WOOD POLE (CLASS 5 OR BETTER) 45 FOOT (13.7m) MINIMUM
- ⊠ TEMPORARY CONTROLLER CABINET
- TEMPORARY SPAN WIRE, TETHER WIRE, AND CABLE
- ⊕ TEMPORARY SERVICE INSTALLATION
- ⊡ TEMPORARY PEDESTRIAN SIGNAL HEAD, BRACKET MOUNTED
- ⊡ MICROWAVE VEHICLE SENSOR
- ⊡ PEDESTRIAN PUSHBUTTON DETECTOR
- ⊡ EMERGENCY VEHICLE LIGHT DETECTOR
- ⊡ CONFIRMATION BEACON
- ⊡ VEHICLE DETECTOR, INDUCTION LOOP
- CT COMMON TRENCH
- UD UNIT DUCT
- G.S. CONDUIT IN GROUND
- ⊡ HANDHOLE
- ⊡ HEAVY DUTY HANDHOLE
- ⊡ VIDEO CAMERA ASSEMBLY
- ⊡ WIRELESS INTERCONNECT (ANTENNA)

TEMPORARY CABLE DIAGRAM LEGEND

- ⊠ TEMPORARY TRAFFIC SIGNAL SECTION OR PEDESTRIAN SIGNAL SECTION 12" (300mm)
- ⊠ TEMPORARY CONTROLLER CABINET
- ⊠ TEMPORARY SERVICE INSTALLATION
- 5 INDICATES NUMBER OF CONDUCTORS IN CABLE. ALL CONDUCTORS TO BE NUMBER 14 AWG WIRE UNLESS OTHERWISE NOTED.
- ⊡ EMERGENCY VEHICLE LIGHT DETECTOR
- ⊡ CONFIRMATION BEACON
- ⊡ VEHICLE DETECTOR, INDUCTION LOOP
- ⊡ PEDESTRIAN PUSHBUTTON DETECTOR
- ⊡ 12" (300mm) PEDESTRIAN SIGNAL SECTION
- ⊡ VIDEO CAMERA ASSEMBLY
- ⊡ WIRELESS INTERCONNECT (ANTENNA)
- ⊡ CO-AXIAL VIDEO CABLE
- ⊡ TEMPORARY RADIO INTERCONNECT TO FORT BEGGS RD. (SEE TEMPORARY INTERCONNECT PLAN)

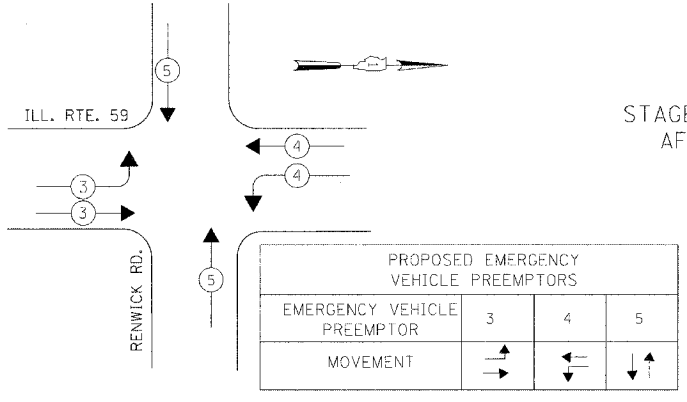


TEMPORARY TRAFFIC SIGNAL PLAN
(SCALE: 1"=20')
STAGES: STAGE 3, STAGE 3A, STAGE 3B, AND AFTER PROPOSED ROADWAY GEOMETRICS ARE BUILT AND OPEN TO TRAFFIC



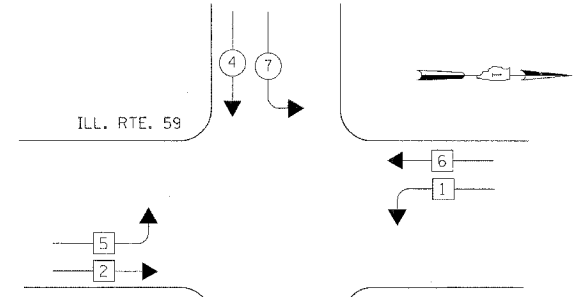
TEMPORARY CABLE PLAN
(NOT TO SCALE)
STAGES: STAGE 3, STAGE 3A, STAGE 3B, AND AFTER PROPOSED ROADWAY GEOMETRICS ARE BUILT AND OPEN TO TRAFFIC

EMERGENCY VEHICLE PREEMPTION SEQUENCE



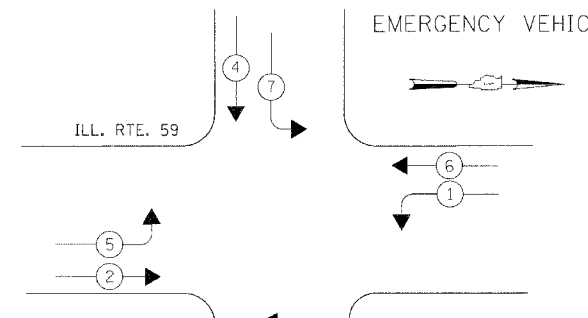
STAGES: STAGE 3, STAGE 3A, AND 3B.

CONTROLLER SEQUENCE



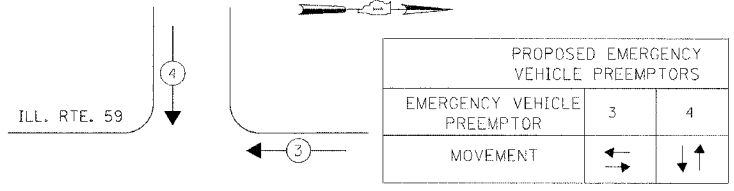
TEMPORARY PHASE DESIGNATION DIAGRAM
STAGES: STAGE 3, STAGE 3A, AND 3B.

CONTROLLER SEQUENCE



TEMPORARY PHASE DESIGNATION DIAGRAM
STAGE 4, AND AFTER PROPOSED ROADWAY GEOMETRICS ARE BUILT AND OPEN TO TRAFFIC

EMERGENCY VEHICLE PREEMPTION SEQUENCE



THE TRAFFIC SIGNAL CONTROL EQUIPMENT FOR THIS PROJECT SHALL BE "ECONOLITE" TO MATCH THE EXISTING ADJACENT SYSTEM.

I.D.O.T. TRAFFIC SIGNAL INSTALLATION ELECTRICAL SERVICE REQUIREMENTS					TOTAL WATTAGE
TYPE	NO LAMPS	WATTAGE		% OPERATION	
SIGNAL (RED)	16	135	17	0.50	136.0
(YELLOW)	16	135	25	0.25	100.0
(GREEN)	16	135	15	0.25	60.0
ARROW	8	135	12	0.10	9.6
PED. SIGNAL		90	25	1.00	
CONTROLLER	1	100	100	1.00	100.0
ILLUM. SIGN				0.05	
FLASHER				0.50	
ENERGY COSTS TO:				TOTAL =	405.6

ILLINOIS DEPARTMENT OF TRANSPORTATION
201 WEST CENTER COURT
SCHAUMBURG, ILLINOIS 60196-1096
ENERGY SUPPLY CONTACT: MS. BETTY BRULC
PHONE: (815) 724-5052
COMPANY: COMED

- LEGEND**
- ⊡ DUAL ENTRY PHASE
 - ⊡ SINGLE ENTRY PHASE
 - ⊡ PEDESTRIAN PHASE
 - * NUMBER REFERS TO ASSOCIATED PHASE

REVISIONS	
NAME	DATE
PKG, MAA	05-01-08

ILLINOIS DEPARTMENT OF TRANSPORTATION
TEMPORARY TRAFFIC SIGNAL INSTALLATION PLAN,
TEMPORARY CABLE PLAN,
PHASE DESIGNATION DIAGRAM, AND
EMERGENCY VEHICLE PREEMPTION SEQUENCE
ILLINOIS ROUTE 59 AT RENWICK ROAD
(SHEET 3 OF 3)

SCALE: AS NOTED
DATE: 03/18/2008

DRAWN BY: BB/KP
DESIGNED BY: PKG/RRM
CHECKED BY: PKG/RRM

GO GANDHI AND ASSOCIATES, INC.
ENGINEERS AND PLANNERS
6035 N. NORTHWEST HIGHWAY
SUITE 306
CHICAGO, ILLINOIS 60631 TEL: (773) 774-5910