

F.A.P. RTE.	SECTION	COUNTY	TOTAL SHEETS	SHEET NO.
338	(113 & 114)R-5	WILL	525	303
STA.	TO STA.			
FED. ROAD DIST. NO. 1	ILLINOIS	FED. AID PROJECT:		
CONTRACT # 62417				

SCHEDULE OF QUANTITIES

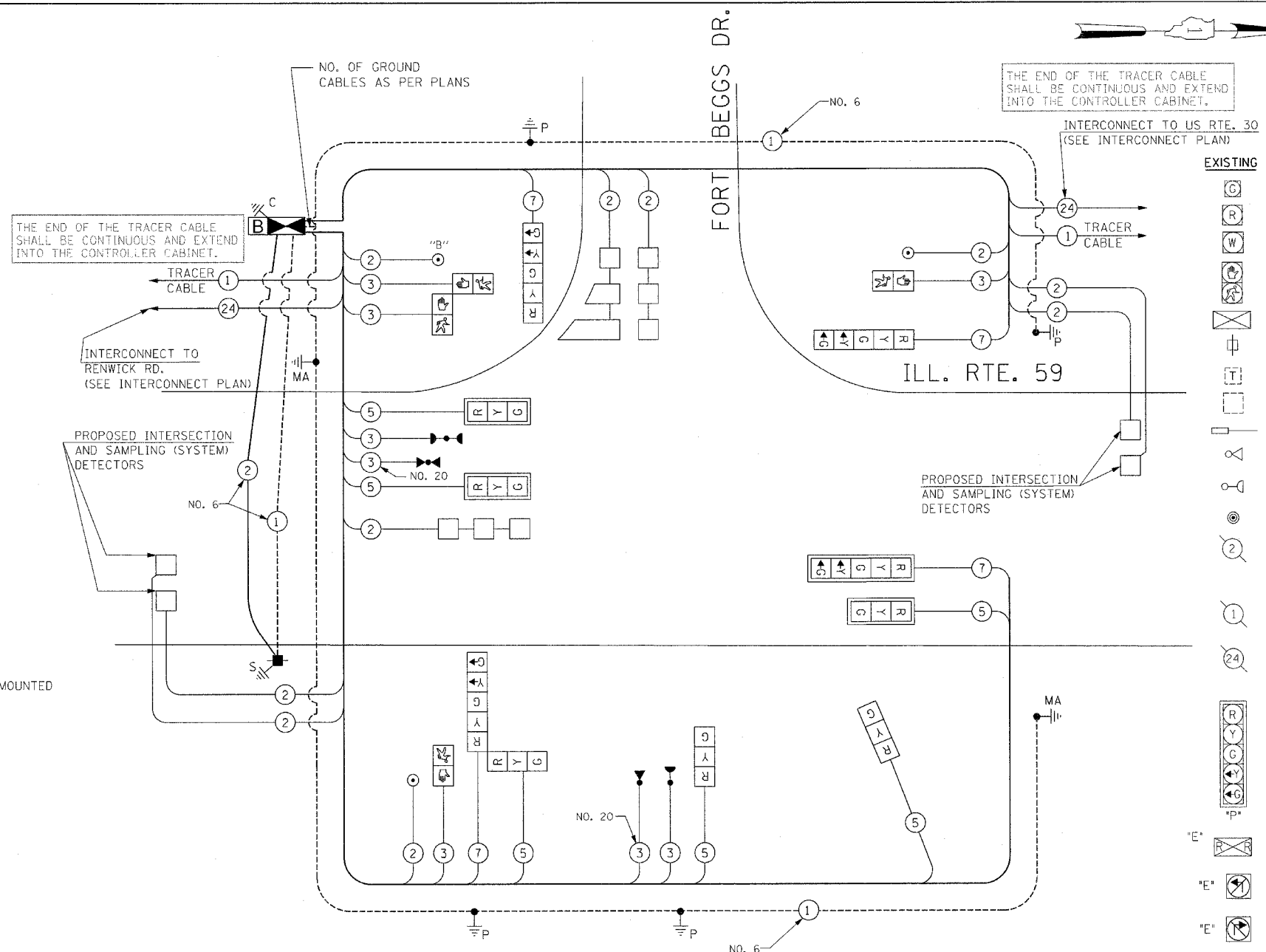
QUANTITY	UNIT	ITEM
25.5	SO FT	SIGN PANEL - TYPE 1
605	FOOT	CONDUIT IN TRENCH, 2" DIA., GALVANIZED STEEL
208	FOOT	CONDUIT IN TRENCH, 2 1/2" DIA., GALVANIZED STEEL
16	FOOT	CONDUIT IN TRENCH, 4" DIA., GALVANIZED STEEL
78	FOOT	CONDUIT PUSHED, 2" DIA., GALVANIZED STEEL
180	FOOT	CONDUIT PUSHED, 4" DIA., GALVANIZED STEEL
4	EACH	HANDHOLE
1	EACH	HEAVY-DUTY HANDHOLE
1	EACH	DOUBLE HANDHOLE
724	FOOT	TRENCH AND BACKFILL FOR ELECTRICAL WORK
1	EACH	FULL-ACTUATED CONTROLLER AND TYPE IV CABINET, SPECIAL
1	EACH	TRANSCEIVER - FIBER OPTIC
326	FOOT	ELECTRIC CABLE IN CONDUIT, SIGNAL NO. 14 2C
675	FOOT	ELECTRIC CABLE IN CONDUIT, SIGNAL NO. 14 3C
988	FOOT	ELECTRIC CABLE IN CONDUIT, SIGNAL NO. 14 5C
636	FOOT	ELECTRIC CABLE IN CONDUIT, SIGNAL NO. 14 7C
1619	FOOT	ELECTRIC CABLE IN CONDUIT, LEAD-IN, NO. 14 1 PAIR
229	FOOT	ELECTRIC CABLE IN CONDUIT, SERVICE, NO. 6 2C
3	EACH	TRAFFIC SIGNAL POST, GALVANIZED STEEL 16 FT.
1	EACH	TRAFFIC SIGNAL POST, GALVANIZED STEEL 18 FT.
1	EACH	STEEL MAST ARM ASSEMBLY AND POLE, 22 FT.
1	EACH	STEEL MAST ARM ASSEMBLY AND POLE, 34 FT.
16	FOOT	CONCRETE FOUNDATION, TYPE A
4	FOOT	CONCRETE FOUNDATION, TYPE C
15	FOOT	CONCRETE FOUNDATION, TYPE E 30-INCH DIAMETER
15	FOOT	CONCRETE FOUNDATION, TYPE E 36-INCH DIAMETER
3	EACH	SIGNAL HEAD, LED, 1-FACE, 3-SECTION, MAST-ARM MOUNTED
2	EACH	SIGNAL HEAD, LED, 1-FACE, 3-SECTION, BRACKET MOUNTED
2	EACH	SIGNAL HEAD, LED, 1-FACE, 5-SECTION, BRACKET MOUNTED
1	EACH	SIGNAL HEAD, LED, 1-FACE, 5-SECTION, MAST ARM MOUNTED
1	EACH	SIGNAL HEAD, LED, 2-FACE, 1-3 SECTION, 1-5 SECTION, BRACKET MOUNTED
2	EACH	PEDESTRIAN SIGNAL HEAD, LED, 1-FACE, BRACKET MOUNTED
1	EACH	PEDESTRIAN SIGNAL HEAD, LED, 2-FACE, BRACKET MOUNTED
4	EACH	TRAFFIC SIGNAL BACKPLATE
7	EACH	INDUCTIVE LOOP DETECTOR
* 2	EACH	LIGHT DETECTOR
* 1	EACH	LIGHT DETECTOR AMPLIFIER
3	EACH	PEDESTRIAN PUSH-BUTTON
1	EACH	TEMPORARY TRAFFIC SIGNAL INSTALLATION
1	EACH	REMOVE EXISTING TRAFFIC SIGNAL EQUIPMENT
5	EACH	REMOVE EXISTING HANDHOLE
3	EACH	REMOVE EXISTING CONCRETE FOUNDATION
457	FOOT	PREFORMED DETECTOR LOOP
1	EACH	TEMPORARY TRAFFIC SIGNAL TIMING
1	EACH	SERVICE INSTALLATION - POLE MOUNTED
1	EACH	UNINTERRUPTIBLE POWER SUPPLY
746	FOOT	ELECTRIC CABLE IN CONDUIT, GROUNDING, NO. 6 1C
* 270	FOOT	ELECTRIC CABLE IN CONDUIT NO. 20 3/C, TWISTED, SHIELDED

* 100% COST TO VILLAGE OF PLAINFIELD

I.D.O.T. TRAFFIC SIGNAL INSTALLATION ELECTRICAL SERVICE REQUIREMENTS					TOTAL WATTAGE
TYPE	NO LAMPS	WATTAGE	OPERATION		
		INCAND.	LED		
SIGNAL (RED)	10	135	17	0.50	85.0
(YELLOW)	10	135	25	0.25	62.5
(GREEN)	10	135	15	0.25	37.5
ARROW	8	135	12	0.10	9.6
PED. SIGNAL	4	90	25	1.00	100.0
CONTROLLER ILLUM. SIGN	1	100	100	1.00	100.0
				0.05	
FLASHER				0.50	
ENERGY COSTS TO:					TOTAL = 394.6
ILLINOIS DEPARTMENT OF TRANSPORTATION 201 WEST CENTER COURT SCHAUMBURG, ILLINOIS 60196-1096					
ENERGY SUPPLY CONTACT: MS. BETTY BRULC PHONE: (815) 724-5052 COMPANY: COMED					

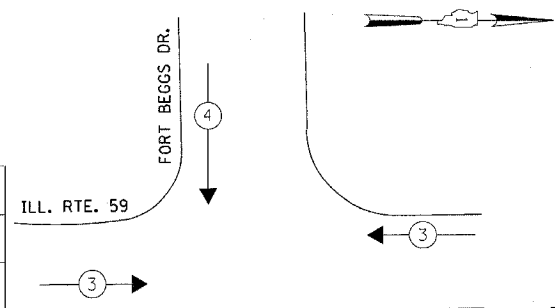
PROPOSED EMERGENCY VEHICLE PREEMPTORS		
EMERGENCY VEHICLE PREEMPTOR	3	4
MOVEMENT	←→	↔

FOUNDATION (DEPTH)	FT. (m)	CABLE SLACK	FT. (m)	VERTICAL	FT. (m)
TYPE A-POST	4 (1.2)	HANDHOLE	6.5 (2.0)	ALL FOUNDATIONS	3.5 (1.0)
D-CONTROLLER	4 (1.2)	DOUBLE HANDHOLE	13 (4.0)	MAST ARM (L) POLE	20'-L-25"
E-MAST ARM POLE		SIGNAL POST	2 (1.0)		(6m+L-0.6m)
24" (6.00mm)	10 (3.0)	CONTROLLER CAB.	1 (0.5)	BRACKET MOUNTED	13 (4.0)
30" (7.50mm)	15 (4.6)	FIBER OPTIC	13 (4.0)	PED. PUSHBUTTON	4 (1.2)
		ELECTRIC SERVICE	1 (0.5)	ELECTRIC SERVICE	13.5 (4.1)
		GROUND CABLE	1 (0.5)	SERVICE TO GROUND	13.5 (4.1)
				POST MOUNTED	6 (1.8)

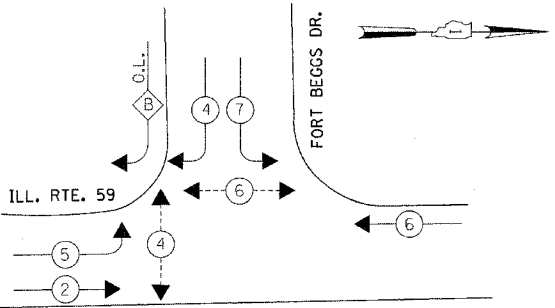


CABLE PLAN

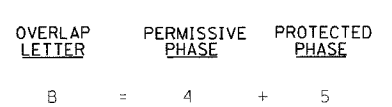
EMERGENCY VEHICLE PREEMPTION SEQUENCE



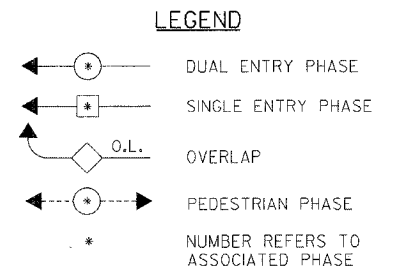
CONTROLLER SEQUENCE



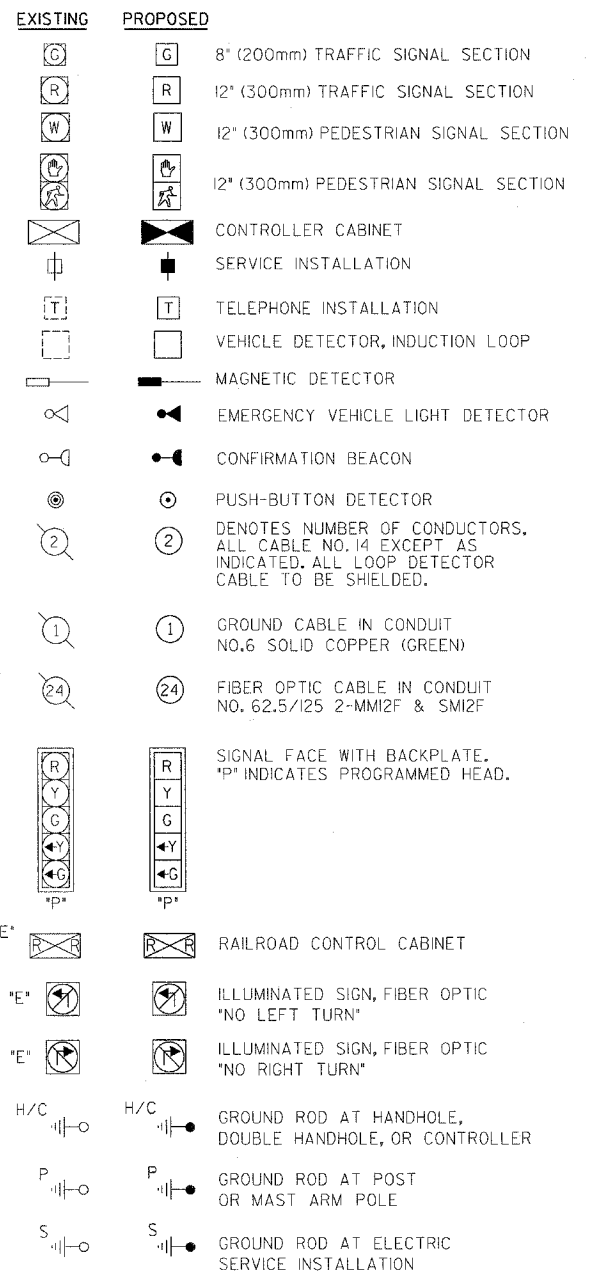
PHASE DESIGNATION DIAGRAM



THE TRAFFIC SIGNAL CONTROL EQUIPMENT FOR THIS PROJECT SHALL BE "ECONOLITE" TO MATCH THE EXISTING ADJACENT SYSTEM.



CABLE PLAN LEGEND



PUSH-BUTTON NOTE:
PUSH-BUTTON "B" SHALL PLACE A CALL IN PHASES 4 AND 6

REVISIONS	
NAME	DATE

ILLINOIS DEPARTMENT OF TRANSPORTATION
CABLE PLAN, PHASE DESIGNATION DIAGRAM,
EMERGENCY VEHICLE PREEMPTION SEQUENCE
AND SCHEDULE OF QUANTITIES
ILLINOIS ROUTE 59 AT FORT BEGGS DRIVE

SCALE: N.T.S. DATE: 03/18/2008

DRAWN BY: BB, KP
DESIGNED BY: PKG/RRM
CHECKED BY: PKG/RRM