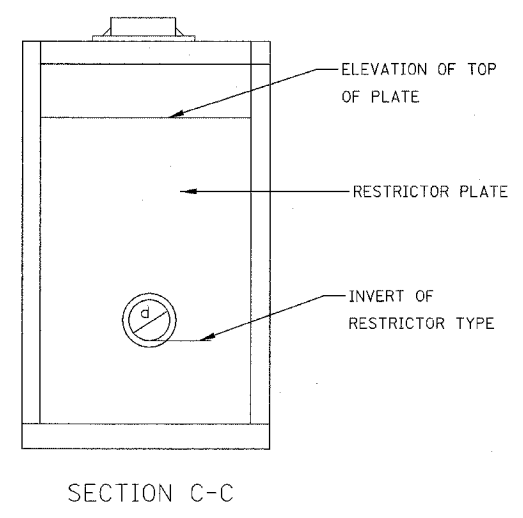
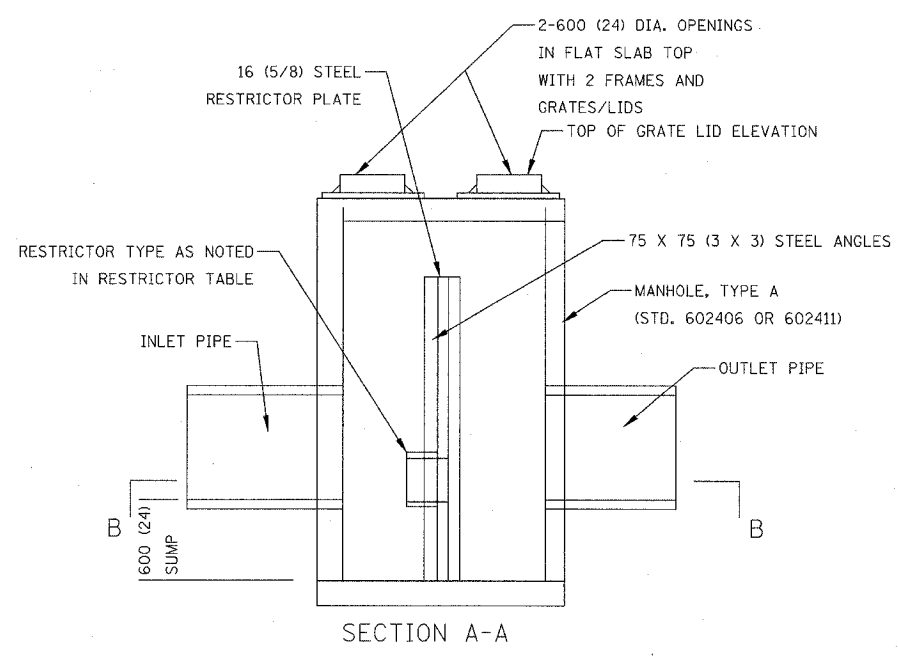
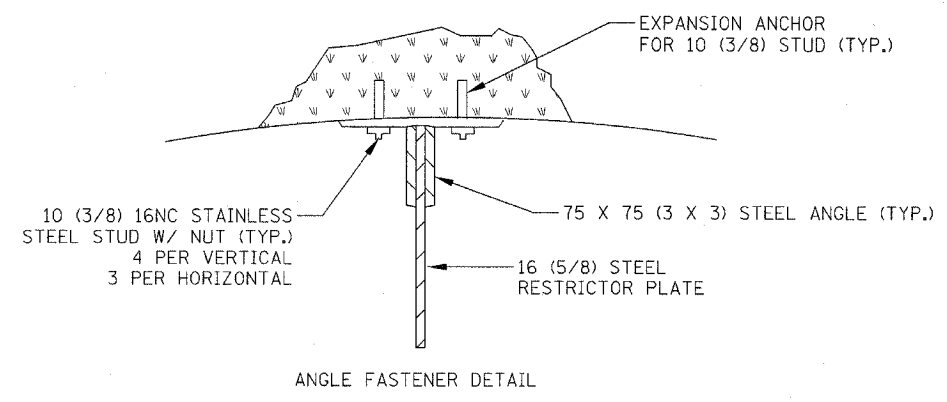
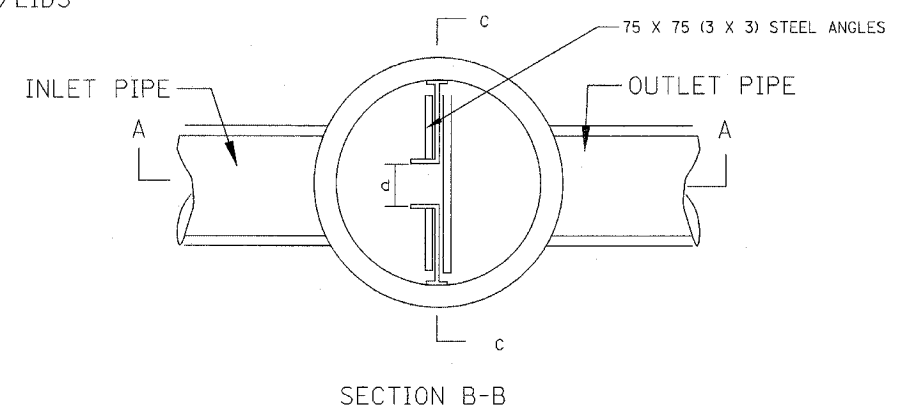
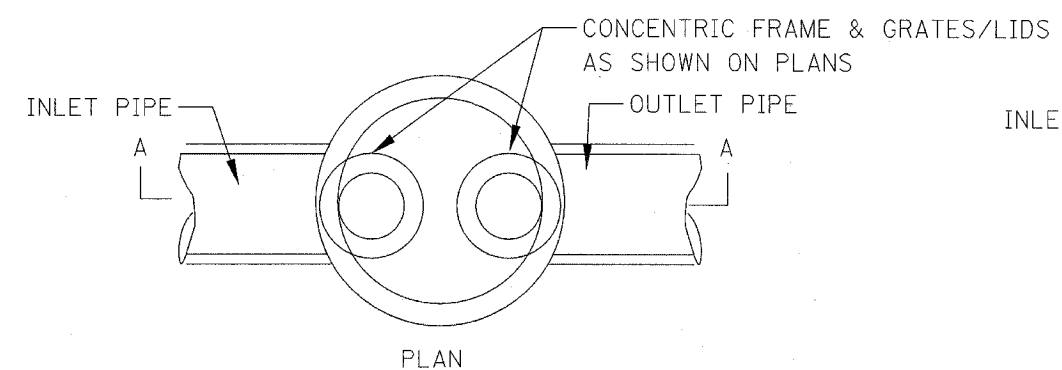
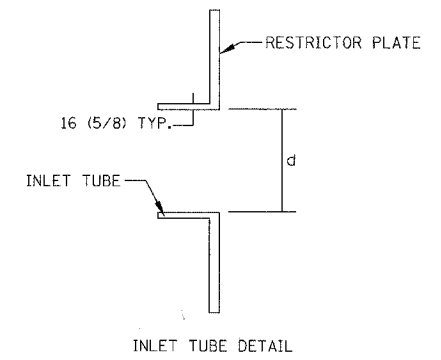


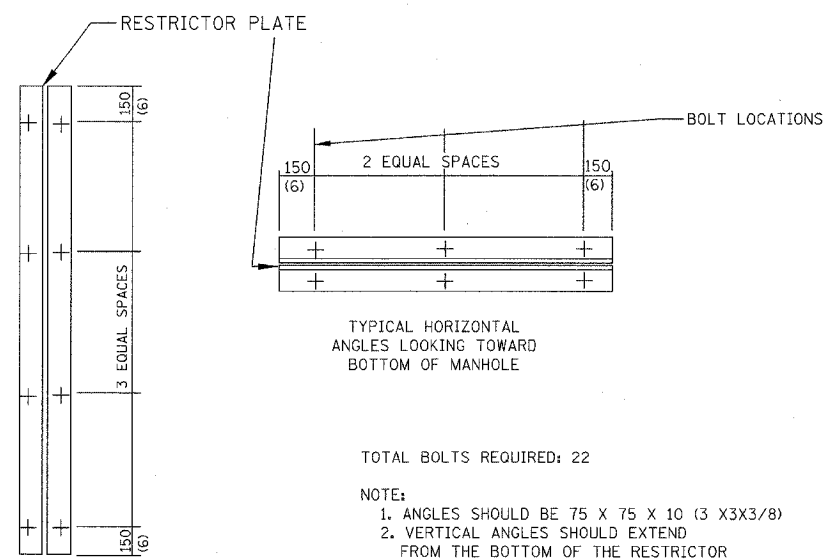
FAP DIST.	SECTION	COUNTY	TOTAL SHEETS	SHEET NO.
338 (113 & 114) R-5	WILL	525	394	
STA.	TO STA.			
FED. ROAD DIST. NO.	ILLINOIS	FAP 338 (IL RTE. 59)		



- NOTES:
1. ALL STEEL ANGLES AND PLATES TO BE GALVANIZED AFTER FABRICATION
 2. ALL RESTRICTOR PLATES, ANGLES AND HARDWARE TO BE INCLUDED IN THE COST OF THE MANHOLE.
 3. BASIS OF PAYMENT: "MANHOLES, TYPE A, TYPE I FRAME, CLOSED LID, RESTRICTOR PLATE" EACH, OF THE DIAMETER SPECIFIED



STR #	STATION	MANHOLE DIAMETER	FRAME AND GRATE	RESTRICTOR TYPE	INSIDE RESTRICTOR TYPE DIAMETER (d)	INVERT OF RESTRICTOR TYPE	ELEVATION OF TOP OF PLATE OVERFLOW	RIM ELEVATION
175	3261+40	6'	Type I-CL	2	8"	597.11	599.75	602.10
181	3261+60	6'	Type I-CL	2	7"	597.11	599.75	602.10
242	3284+80	6'	Type I-CL	2	6"	600.83	604.50	609.60
246	3285+67	6'	Type I-CL	2	14"	600.61	604.50	609.54
360	3319+72	7'	Type I-CL	2	14"	603.90	607.50	611.14



- TOTAL BOLTS REQUIRED: 22
- NOTE:
1. ANGLES SHOULD BE 75 X 75 X 10 (3 X3X3/8)
 2. VERTICAL ANGLES SHOULD EXTEND FROM THE BOTTOM OF THE RESTRICTOR PLATE TO THE TOP
 3. HORIZONTAL ANGLES SHOULD EXTEND FROM VERTICAL ANGLE TO VERTICAL ANGLE

1	2	3	4	5	6
RE-ENTRANT TUBE	SHARP EDGES	SQUARE EDGED	RE-ENTRANT TUBE	SQUARE EDGED	ROUNDED
LENGTH 1/2 TO 1 DIA.		STREAM CLEARS SIDES	LENGTH 2-1/2 DIA.	LENGTH 2-1/2 DIA.	
C=.52	C=.61	C=.61	C=.73	C=.82	C=.98

VALUES OF "C" FOR CIRCULAR AND SQUARE ORIFICES

ALL DIMENSIONS ARE IN MILLIMETERS (INCHES) UNLESS OTHERWISE SHOWN

ILLINOIS DEPARTMENT OF TRANSPORTATION
DISTRICT NO. 1 SCHAUMBURG

MANHOLE WITH RESTRICTOR PLATE DETAIL

SCALE NONE
DATE MARCH 18, 2008
DRAWN BY JWM
CHECKED BY PJD