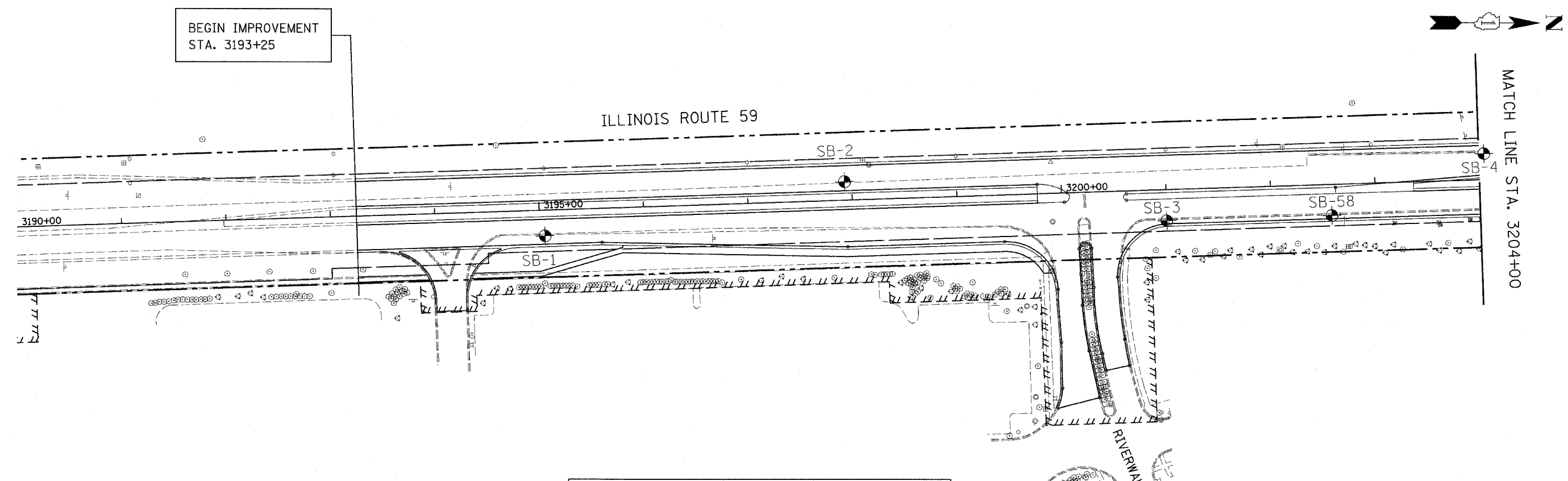


FAP NO.	SECTION	COUNTY	TOTAL SHEETS	SHEET NO.
338	(113 & 114) R-5	WILL	525	412
STA. 3190+00		TO STA. 3204+00		
FED. ROAD DIST. NO.	ILLINOIS	FAP 338 (IL RTE. 59)		

PLAN	DESIGNED	DATE
	BY	
	CHECKED	
	DATE	
	BY	
	CHECKED	
	DATE	
	BY	
	CHECKED	
	DATE	

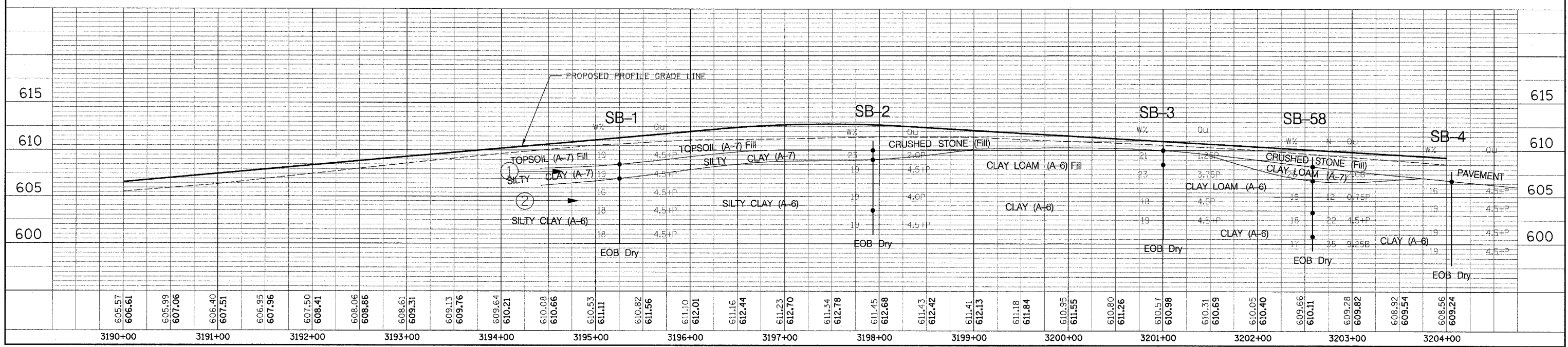
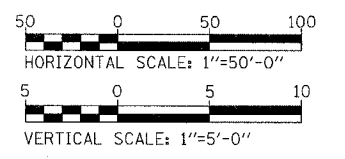
PROFILE	DESIGNED	DATE
	BY	
	CHECKED	
	DATE	
	BY	
	CHECKED	
	DATE	
	BY	
	CHECKED	
	DATE	



- DENOTES LABORATORY TEST
- ▼ GROUNDWATER FIRST ENCOUNTER
- ▽ GROUNDWATER UPON COMPLETION

- ① AASHTO T 88  
GRAVEL=0.0%  
SAND=5.0%  
SILT=56.0%  
CLAY=39.0%  
  
AASHTO T 89 & T 90  
LIQUID LIMIT=47  
PLASTICITY INDEX=26
- ② AASHTO T 88  
GRAVEL=1.0%  
SAND=6.5%  
SILT=57.5%  
CLAY=35.0%  
  
AASHTO T 89 & T 90  
LIQUID LIMIT=47  
PLASTICITY INDEX=14

THE PROPOSED PLAN AND PROFILE GEOMETRY CONTAINED IN THIS SHEET IS REPRESENTATIVE OF THE STATUS OF THE DESIGN AT THE TIME OF THE SOILS REPORT WAS AUTHORED IN JANUARY 2004. SEE THE ROADWAY PLAN AND PROFILE SHEETS FOR THE LATEST GEOMETRY.



SOILS PLAN / PROFILE - ILLINOIS ROUTE 59