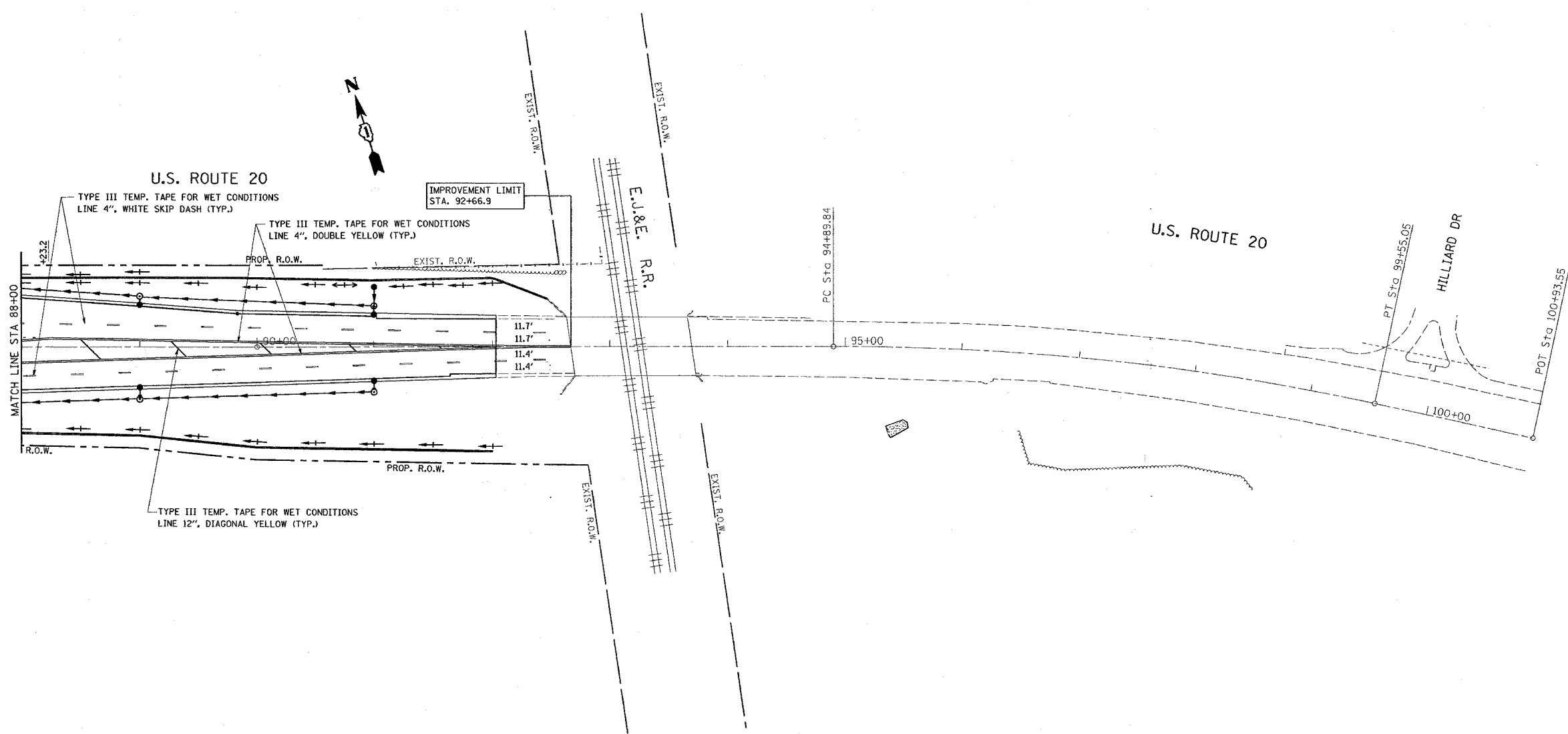


F.A. RTE.	SECTION	COUNTY	TOTAL SHEETS	SHEET NO.
345	2R-1-N-1	COOK	196	35
STA.		TO STA.		
FED. ROAD DIST. NO.	ILLINOIS	FED. AID PROJECT		



**LEGEND**

- SIGN
- DRUMS WITH STEADY BURN MONODIRECTIONAL LIGHT
- 50' C-C TANGENTS
- 25' C-C LANE SHIFTS & TAPERS
- 10' C-C RADII (TYP)
- WORK AREA

REVISIONS	
NAME	DATE

ILLINOIS DEPARTMENT OF TRANSPORTATION

**STAGE II CONSTRUCTION**  
**U.S. RTE. 20 @**  
**SHALES PARKWAY AND BLUFF CITY BLVD.**

SCALE: VERT. 1"=50'  
 HORIZ. 1"=100'

DATE 2/14/2008

DRAWN BY  
 CHECKED BY MEA/MJ

PLOT DATE = 2/14/2008  
 FILE NAME = c:\nrc\p\m\proj\13783\h\stage.dgn  
 PLOT SCALE = 5/8"=1'-0" / IN.  
 USER NAME = drvelkoin