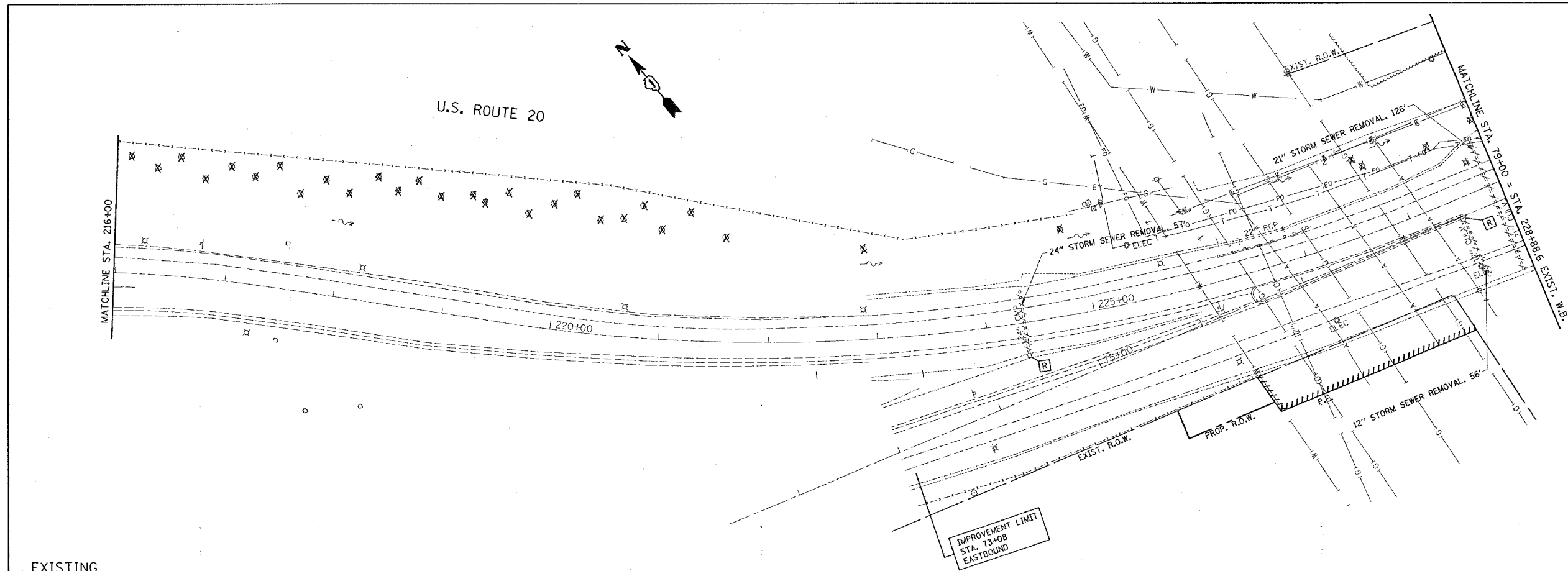


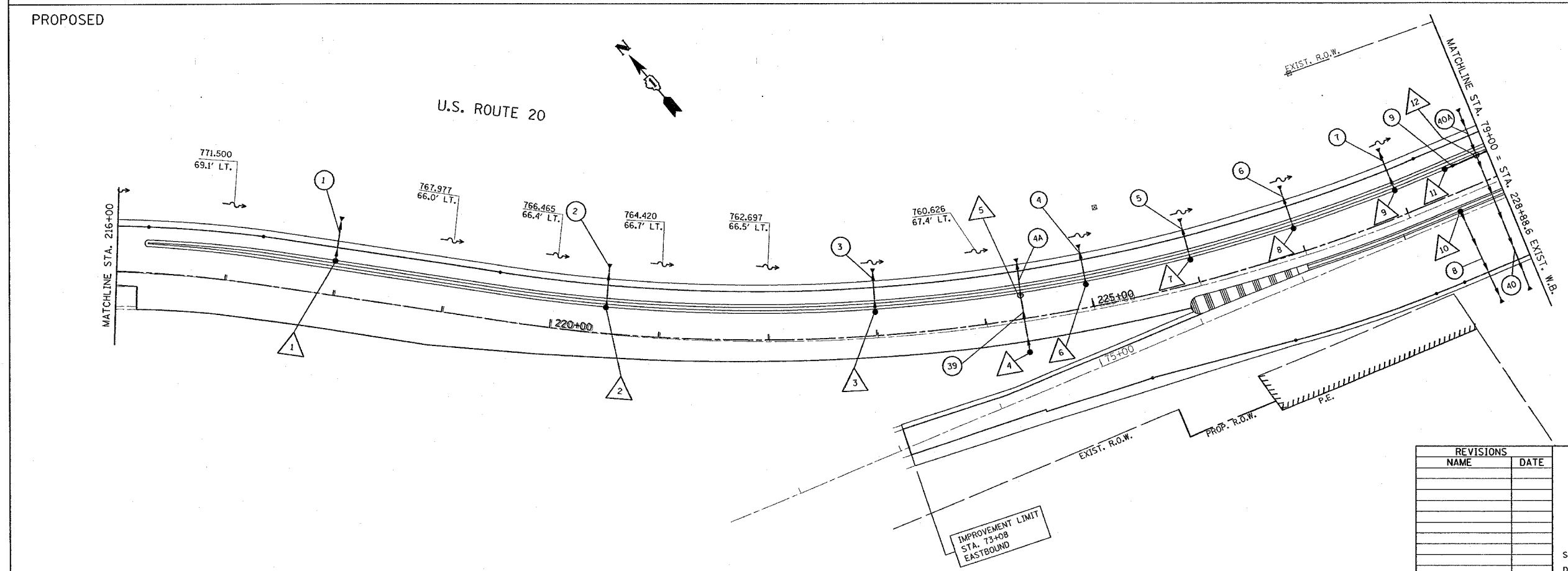
*REF-edr02
*REF-pdr02

F.A.P. RTE.	SECTION	COUNTY	TOTAL SHEETS	SHEET NO.
345	BR-1-N-1	COOK	196	42
STA. 216+00 WB T3+08 EB TO STA. 79+00=228+91.7				
FED. ROAD DIST. NO. 1 ILLINOIS FED. AID PROJECT				

CONTRACT NO. 62617



EXISTING



PROPOSED

REVISIONS	
NAME	DATE

ILLINOIS DEPARTMENT OF TRANSPORTATION
EXISTING AND PROPOSED
DRAINAGE & UTILITY PLAN
U.S. 20 AT
BLUFF CITY/ SHALES PKWY.

SCALE: VERT. 1" = 50'
HORIZ. DATE 2/14/2008

DRAWN BY
CHECKED BY