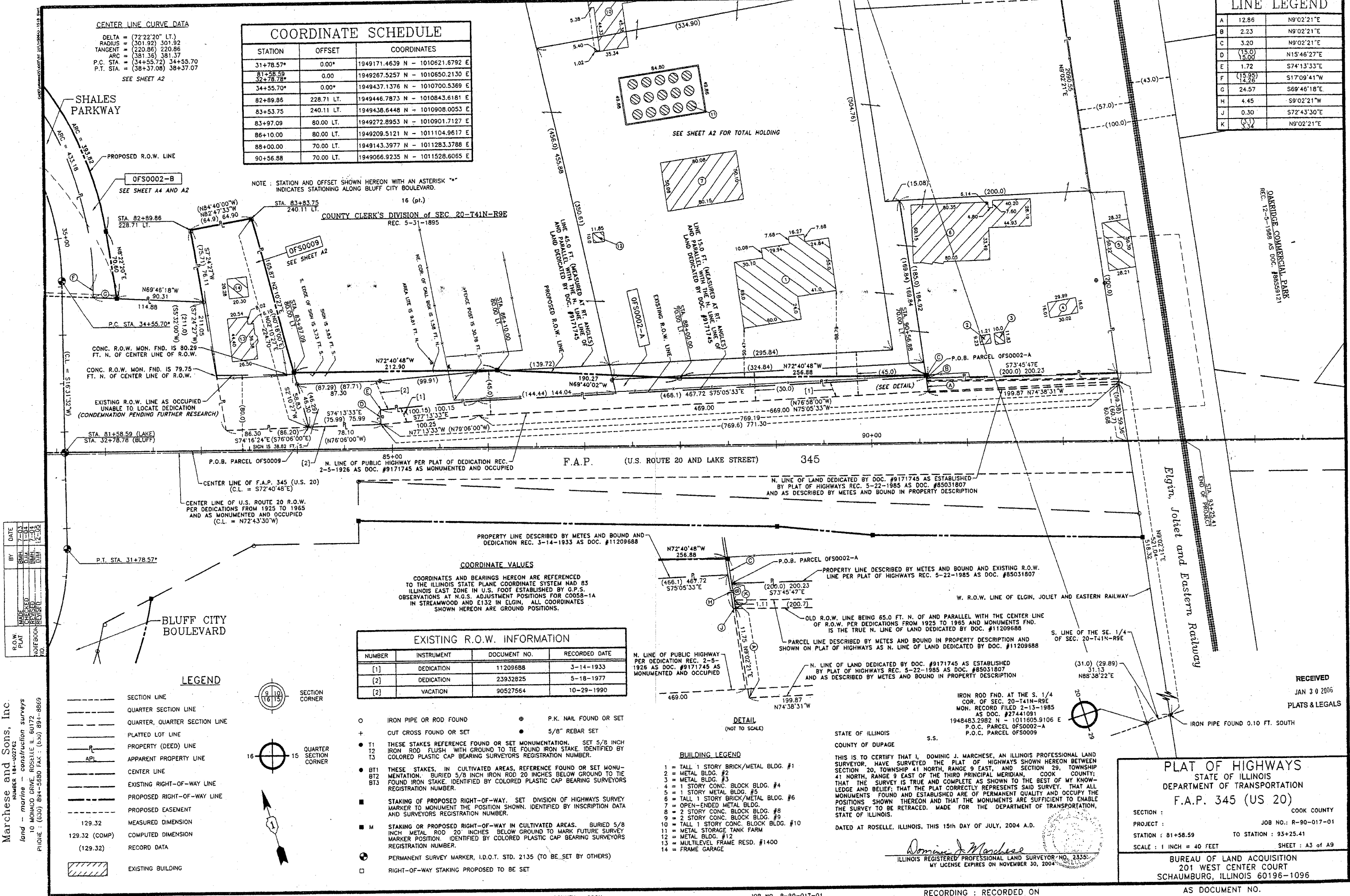


LINE LEGEND		
A	12.86	N9°02'21"E
B	2.23	N9°02'21"E
C	3.20	N9°02'21"E
D	15.00	N15°46'27"E
E	1.72	S74°13'33"E
F	(15.95)	S17°09'41"W
G	24.57	S69°46'18"E
H	4.45	S9°02'21"W
J	0.30	S72°43'30"E
K	(3.1)	N9°02'21"E

CENTER LINE CURVE DATA
 DELTA = (72°22'20" LT.)
 RADIUS = (301.92) 301.92
 TANGENT = (220.86) 220.86
 ARC = (381.36) 381.37
 P.C. STA. = (34+55.72) 34+55.70
 P.T. STA. = (38+37.08) 38+37.07
 SEE SHEET A2

COORDINATE SCHEDULE		
STATION	OFFSET	COORDINATES
31+78.57*	0.00*	1949171.4639 N - 1010621.6792 E
81+58.59	0.00	1949267.5257 N - 1010650.2130 E
34+55.70*	0.00*	1949437.1376 N - 1010700.5369 E
82+89.86	228.71 LT.	1949446.7873 N - 1010843.6181 E
83+53.75	240.11 LT.	1949438.6448 N - 1010908.0053 E
83+97.09	80.00 LT.	1949272.8953 N - 1010901.7127 E
86+10.00	80.00 LT.	1949209.5121 N - 1011104.9617 E
88+00.00	70.00 LT.	1949143.3977 N - 1011283.3788 E
90+56.88	70.00 LT.	1949066.9235 N - 1011528.6065 E

NOTE: STATION AND OFFSET SHOWN HEREON WITH AN ASTERISK "*" INDICATES STATIONING ALONG BLUFF CITY BOULEVARD.

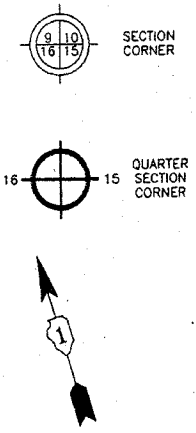


BY	DATE
MADE	
CHECKED	
REVISION	
NOISEBOOK	
NO.	

Marchese and Sons, Inc.
 NUMBER 184-02782
 land - marine - construction surveys
 10 MONACO DRIVE, ROSSELLE, IL 60172
 PHONE: (630) 894-5680 FAX: (630) 894-8869

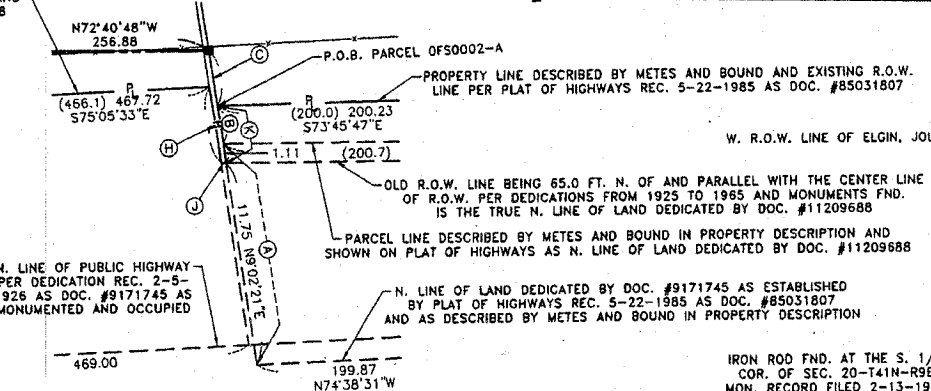
LEGEND

- SECTION LINE
- QUARTER SECTION LINE
- QUARTER, QUARTER SECTION LINE
- PLATTED LOT LINE
- PROPERTY (DEED) LINE
- APPARENT PROPERTY LINE
- CENTER LINE
- EXISTING RIGHT-OF-WAY LINE
- PROPOSED RIGHT-OF-WAY LINE
- PROPOSED EASEMENT
- 129.32 MEASURED DIMENSION
- 129.32 (COMP) COMPUTED DIMENSION
- (129.32) RECORD DATA
- EXISTING BUILDING



COORDINATE VALUES
 COORDINATES AND BEARINGS HEREON ARE REFERENCED TO THE ILLINOIS STATE PLANE COORDINATE SYSTEM NAD 83 ILLINOIS EAST ZONE IN U.S. FOOT ESTABLISHED BY G.P.S. OBSERVATIONS AT N.G.S. ADJUSTMENT POSITIONS FOR CO058-1A IN STREAMWOOD AND E132 IN ELGIN. ALL COORDINATES SHOWN HEREON ARE GROUND POSITIONS.

EXISTING R.O.W. INFORMATION			
NUMBER	INSTRUMENT	DOCUMENT NO.	RECORDED DATE
(1)	DEDICATION	11209688	3-14-1933
(2)	DEDICATION	23932825	5-18-1977
(2)	VACATION	90527564	10-29-1990



- BUILDING LEGEND**
- 1 = TALL 1 STORY BRICK/METAL BLDG. #1
 - 2 = METAL BLDG. #2
 - 3 = METAL BLDG. #3
 - 4 = 1 STORY CONC. BLOCK BLDG. #4
 - 5 = 1 STORY METAL BLDG. #5
 - 6 = TALL 1 STORY BRICK/METAL BLDG. #6
 - 7 = OPEN-ENDED METAL BLDG.
 - 8 = 2 STORY CONC. BLOCK BLDG. #8
 - 9 = 2 STORY CONC. BLOCK BLDG. #9
 - 10 = TALL 1 STORY CONC. BLOCK BLDG. #10
 - 11 = METAL STORAGE TANK FARM
 - 12 = METAL BLDG. #12
 - 13 = MULTILEVEL FRAME RESD. #1400
 - 14 = FRAME GARAGE

STATE OF ILLINOIS
 COUNTY OF DUPAGE
 S.S.
 THIS IS TO CERTIFY THAT I, DOMINIC J. MARCHESE, AN ILLINOIS PROFESSIONAL LAND SURVEYOR, HAVE SURVEYED THE PLAT OF HIGHWAYS SHOWN HEREON BETWEEN SECTION 20, TOWNSHIP 41 NORTH, RANGE 9 EAST, AND SECTION 29, TOWNSHIP 41 NORTH, RANGE 9 EAST OF THE THIRD PRINCIPAL MERIDIAN, COOK COUNTY; THAT THE SURVEY IS TRUE AND COMPLETE AS SHOWN TO THE BEST OF MY KNOWLEDGE AND BELIEF; THAT THE PLAT CORRECTLY REPRESENTS SAID SURVEY, THAT ALL MONUMENTS FOUND AND ESTABLISHED ARE OF PERMANENT QUALITY AND OCCUPY THE POSITIONS SHOWN THEREON AND THAT THE MONUMENTS ARE SUFFICIENT TO ENABLE THE SURVEY TO BE RETRACED. MADE FOR THE DEPARTMENT OF TRANSPORTATION, STATE OF ILLINOIS.
 DATED AT ROSELLE, ILLINOIS, THIS 15th DAY OF JULY, 2004 A.D.
 Dominic J. Marchese
 ILLINOIS REGISTERED PROFESSIONAL LAND SURVEYOR NO. 2335
 MY LICENSE EXPIRES ON NOVEMBER 30, 2004

PLAT OF HIGHWAYS
 STATE OF ILLINOIS
 DEPARTMENT OF TRANSPORTATION
 F.A.P. 345 (US 20)

SECTION: COOK COUNTY
 PROJECT: JOB NO.: R-90-017-01
 STATION: 81+58.59 TO STATION: 93+25.41
 SCALE: 1 INCH = 40 FEET SHEET: A3 OF A9

BUREAU OF LAND ACQUISITION
 201 WEST CENTER COURT
 SCHAUMBURG, ILLINOIS 60196-1096
 AS DOCUMENT NO.

RECEIVED
 JAN 30 2006
 PLATS & LEGALS