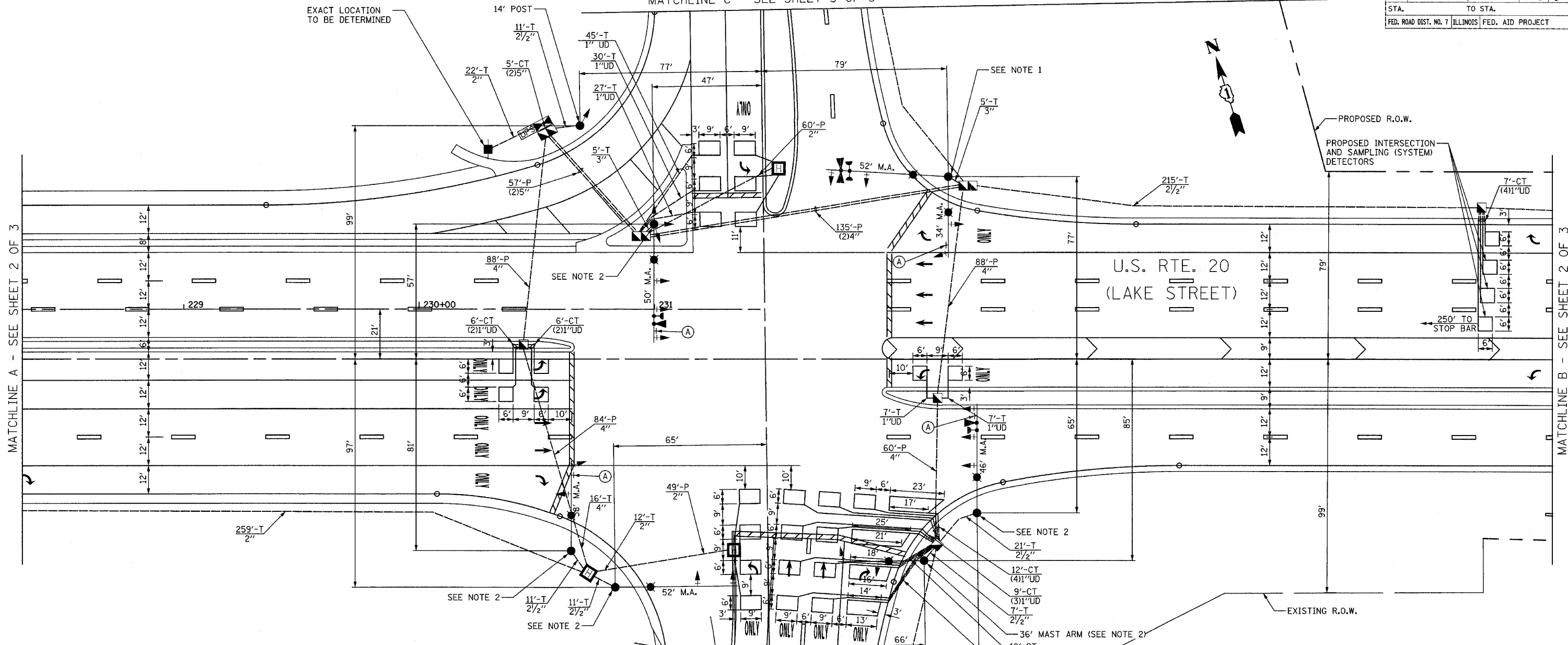


F.A.P. RTE.	SECTION	COUNTY	TOTAL SHEETS	SHEET NO.
345	8R-1-N-1	COOK	196	80
STA.		TO STA.		
FED. ROAD DIST. NO. 7 ILLINOIS FED. AID PROJECT				

SHALES PARKWAY
MATCHLINE C - SEE SHEET 3 OF 3



TRAFFIC SIGNAL LEGEND

EXISTING		PROPOSED		EXISTING		PROPOSED	
CONTROLLER			DETECTOR LOOP			CAST IRON JUNCTION BOX	
SERVICE INSTALLATION			CAST IRON JUNCTION BOX			EMERGENCY VEHICLE SYSTEM DETECTOR	
SIGNAL HEAD			EMERGENCY VEHICLE SYSTEM DETECTOR			CONFIRMATION BEACON	
SIGNAL HEAD WITH BACKPLATE			CONFIRMATION BEACON			SIGNAL HEAD PROGRAMMED	
SIGNAL HEAD, PEDESTRIAN			SIGNAL HEAD PROGRAMMED			CONDUIT SPLICE	
SIGNAL POST			CONDUIT SPLICE			WOOD POLE	
MAST ARM ASSEMBLY AND POLE, STEEL			WOOD POLE			RACEWAY FOR MAGNETIC DETECTOR, TYPE I OR TYPE II	
MAST ARM ASSEMBLY AND POLE, ALUMINUM			RACEWAY FOR MAGNETIC DETECTOR, TYPE I OR TYPE II			VEHICLE DETECTOR, NON COMPENSATED MAGNETIC TYPE	
COMBINATION MAST ARM ASSEMBLY AND POLE, STEEL			VEHICLE DETECTOR, NON COMPENSATED MAGNETIC TYPE			RAILROAD CONTROLLER	
COMMON TRENCH			RAILROAD CONTROLLER			ILLUMINATED SIGN, FIBER OPTIC "NO LEFT TURN"	
UNIT DUCT			ILLUMINATED SIGN, FIBER OPTIC "NO LEFT TURN"			ILLUMINATED SIGN, FIBER OPTIC "NO RIGHT TURN"	
HANDHOLE			ILLUMINATED SIGN, FIBER OPTIC "NO RIGHT TURN"			TELEPHONE CONNECTION	
HEAVY-DUTY HANDHOLE			TELEPHONE CONNECTION			UNINTERRUPTIBLE POWER SUPPLY	
DOUBLE HANDHOLE			UNINTERRUPTIBLE POWER SUPPLY				
G.S. CONDUIT IN TRENCH OR PUSHED							
PEDESTRIAN PUSH-BUTTON DETECTOR							

NOTES:

1. THE COMBINATION MAST ARM ASSEMBLY AND POLE WITH DUAL MAST ARMS AT THIS LOCATION SHALL HAVE A 45 FT. COMBINATION POLE HEIGHT WITH DUAL 15' LUMINAIRE ARMS.
2. THE COMBINATION MAST ARM ASSEMBLY AND POLE AT THIS LOCATION SHALL HAVE A 45 FT. COMBINATION POLE HEIGHT WITH 15' LUMINAIRE ARM.

LEFT ON GREEN ARROW ONLY
R 10-5
24"x30"
(TYP.) SIGN PANEL TYPE 1

RESTORATION OF WORK AREA.
RESTORATION OF THE TRAFFIC SIGNAL WORK AREA SHALL BE INCIDENTAL TO THE RELATED PAY ITEM SUCH AS FOUNDATION, CONDUIT, HANDHOLE, TRENCH AND BACKFILL, ETC., AND NO EXTRA COMPENSATION SHALL BE ALLOWED. ALL ROADWAY SURFACES SUCH AS SHOULDER, MEDIAN, SIDEWALKS, PAVEMENT, ETC. SHALL BE REPLACED IN KIND. ALL DAMAGE TO MOWED LAWNS SHALL BE REPLACED WITH AN APPROVED SOD, AND ALL DAMAGE TO UNMOWED FIELDS SHALL BE SEEDING IN ACCORDANCE WITH STANDARD SPECIFICATIONS 252 AND 250 RESPECTIVELY.

NOTE:
THE TRAFFIC SIGNAL CONTROLLER FOR THIS PROJECT SHALL BE "EAGLE" TO MATCH THE EXISTING ADJACENT SYSTEM.

REVISIONS	
NAME	DATE

ILLINOIS DEPARTMENT OF TRANSPORTATION
TRAFFIC SIGNAL INSTALLATION PLAN
U.S. RTE. 20 (LAKE STREET)
& SHALES PKWY./BLUFF CITY BLVD.
SHEET 1 OF 3

SCALE: 1"=20'
DATE: 12/14/2007
DRAWN BY: CEC
DESIGNED BY: BRD
CHECKED BY: JUE