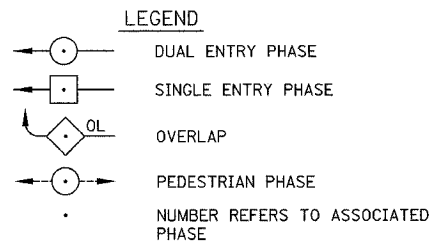
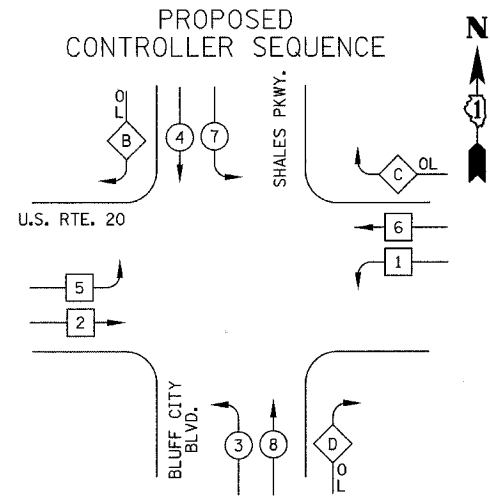


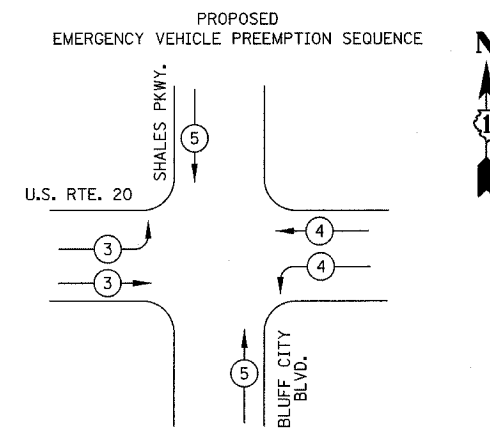
F.A.P. RTE.	SECTION	COUNTY	TOTAL SHEETS	SHEET NO.
345	8R-1-N-1	COOK	196	84
STA.		TO STA.		
FED. ROAD DIST. NO. 7		ILLINOIS FED. AID PROJECT		



PHASE DESIGNATION DIAGRAM

RIGHT TURN OVERLAP PHASE DESIGNATION

OVERLAP LETTER	PERMISSIVE PHASE	PROTECTED PHASE
B	=	FREE-FLOW MOVEMENT
C	=	6 + 7
D	=	8 + 1



PROPOSED EMERGENCY VEHICLE PREEMPTORS

EMERGENCY VEHICLE PREEMPTOR	3	4	5
MOVEMENT			

SCHEDULE OF QUANTITIES

PAY ITEM	UNIT	QUANTITY
SIGN PANEL - TYPE 1	SQ FT	56
SIGN PANEL - TYPE 2	SQ FT	25
CONDUIT IN TRENCH, 2" DIA., GALVANIZED STEEL	FOOT	522
CONDUIT IN TRENCH, 2 1/2" DIA., GALVANIZED STEEL	FOOT	1130
CONDUIT IN TRENCH, 3" DIA., GALVANIZED STEEL	FOOT	10
CONDUIT IN TRENCH, 4" DIA., GALVANIZED STEEL	FOOT	16
CONDUIT IN TRENCH, 5" DIA., GALVANIZED STEEL	FOOT	10
CONDUIT PUSHED, 2" DIA., GALVANIZED STEEL	FOOT	109
CONDUIT PUSHED, 4" DIA., GALVANIZED STEEL	FOOT	655
CONDUIT PUSHED, 5" DIA., GALVANIZED STEEL	FOOT	114
HANDHOLE	EACH	6
HEAVY-DUTY HANDHOLE	EACH	6
DOUBLE HANDHOLE	EACH	3
TRENCH AND BACKFILL FOR ELECTRICAL WORK	FOOT	1683
FULL-ACTUATED CONTROLLER AND TYPE IV CABINET (SPECIAL)	EACH	1
TRANSCEIVER - FIBER OPTIC	EACH	1
ELECTRIC CABLE IN CONDUIT, SIGNAL NO. 14 3C	FOOT	978
ELECTRIC CABLE IN CONDUIT, SIGNAL NO. 14 5C	FOOT	3412
ELECTRIC CABLE IN CONDUIT, SIGNAL NO. 14 7C	FOOT	2381
ELECTRIC CABLE IN CONDUIT, LEAD-IN NO. 14 1 PAIR	FOOT	7048
ELECTRIC CABLE IN CONDUIT, SERVICE, NO. 6 2C	FOOT	41
TRAFFIC SIGNAL POST, GALVANIZED STEEL, 14 FT.	EACH	1
* TRAFFIC SIGNAL POST, GALVANIZED STEEL, 18 FT.	EACH	2
STEEL COMBINATION MAST ARM ASSEMBLY AND POLE, 36 FT.	EACH	1
STEEL COMBINATION MAST ARM ASSEMBLY AND POLE, 38 FT.	EACH	1
STEEL COMBINATION MAST ARM ASSEMBLY AND POLE, 46 FT.	EACH	1
STEEL COMBINATION MAST ARM ASSEMBLY AND POLE, 50 FT.	EACH	1
STEEL COMBINATION MAST ARM ASSEMBLY AND POLE, 52 FT.	EACH	1
CONCRETE FOUNDATION, TYPE A	FOOT	12
CONCRETE FOUNDATION, TYPE C	FOOT	4
CONCRETE FOUNDATION, TYPE E 30-INCH DIAMETER	FOOT	30
CONCRETE FOUNDATION, TYPE E 36-INCH DIAMETER	FOOT	45
SIGNAL HEAD, L.E.D., 1-FACE, 3-SECTION, MAST ARM MOUNTED	EACH	10
SIGNAL HEAD, L.E.D., 1-FACE, 3-SECTION, BRACKET MOUNTED	EACH	1
SIGNAL HEAD, L.E.D., 1-FACE, 5-SECTION, MAST ARM MOUNTED	EACH	6
SIGNAL HEAD, L.E.D., 3-FACE, 1-3 SECTION, 2-5 SECTION, BRACKET MOUNTED	EACH	1
TRAFFIC SIGNAL BACKPLATE, LOUVERED, ALUMINUM	EACH	16
INDUCTIVE LOOP DETECTOR	EACH	18
DETECTOR LOOP, TYPE I	FOOT	1908
* LIGHT DETECTOR	EACH	5
* LIGHT DETECTOR AMPLIFIER	EACH	1
TEMPORARY TRAFFIC SIGNAL INSTALLATION	EACH	1
REMOVE EXISTING TRAFFIC SIGNAL EQUIPMENT	EACH	1
REMOVE EXISTING HANDHOLE	EACH	10
REMOVE EXISTING CONCRETE FOUNDATION	EACH	7
SERVICE INSTALLATION, POLE MOUNT	EACH	1
UNINTERRUPTIBLE POWER SUPPLY	EACH	1
ELECTRIC CABLE IN CONDUIT, GROUNDING, NO. 6 1C	FOOT	1675
* ELECTRIC CABLE IN CONDUIT, NO. 20 3/C, TWISTED, SHIELDED	FOOT	2352
TEMPORARY TRAFFIC SIGNAL TIMINGS	EACH	1
STEEL COMBINATION MAST ARM ASSEMBLY AND POLE WITH		
DUAL MAST ARMS, 34 FT. AND 52 FT.	EACH	1
CONCRETE FOUNDATION, TYPE E (SPECIAL)	FOOT	15

* 100% COST TO CITY OF ELGIN

NOTE:
THE TRAFFIC SIGNAL CONTROLLER EQUIPMENT FOR THIS PROJECT SHALL BE "EAGLE" TO MATCH THE EXISTING ADJACENT SYSTEM.

REVISIONS

NAME	DATE

ILLINOIS DEPARTMENT OF TRANSPORTATION
EMERGENCY VEHICLE PREEMPTION SEQUENCE,
PHASE DESIGNATION DIAGRAM &
SCHEDULE OF QUANTITIES
U.S. RTE. 20 (LAKE STREET)
& SHALES PKWY./BLUFF CITY BLVD.
SCALE: NOT TO SCALE
DATE: 12/14/2007
DRAWN BY: CEC
DESIGNED BY: BRD
CHECKED BY: JJE