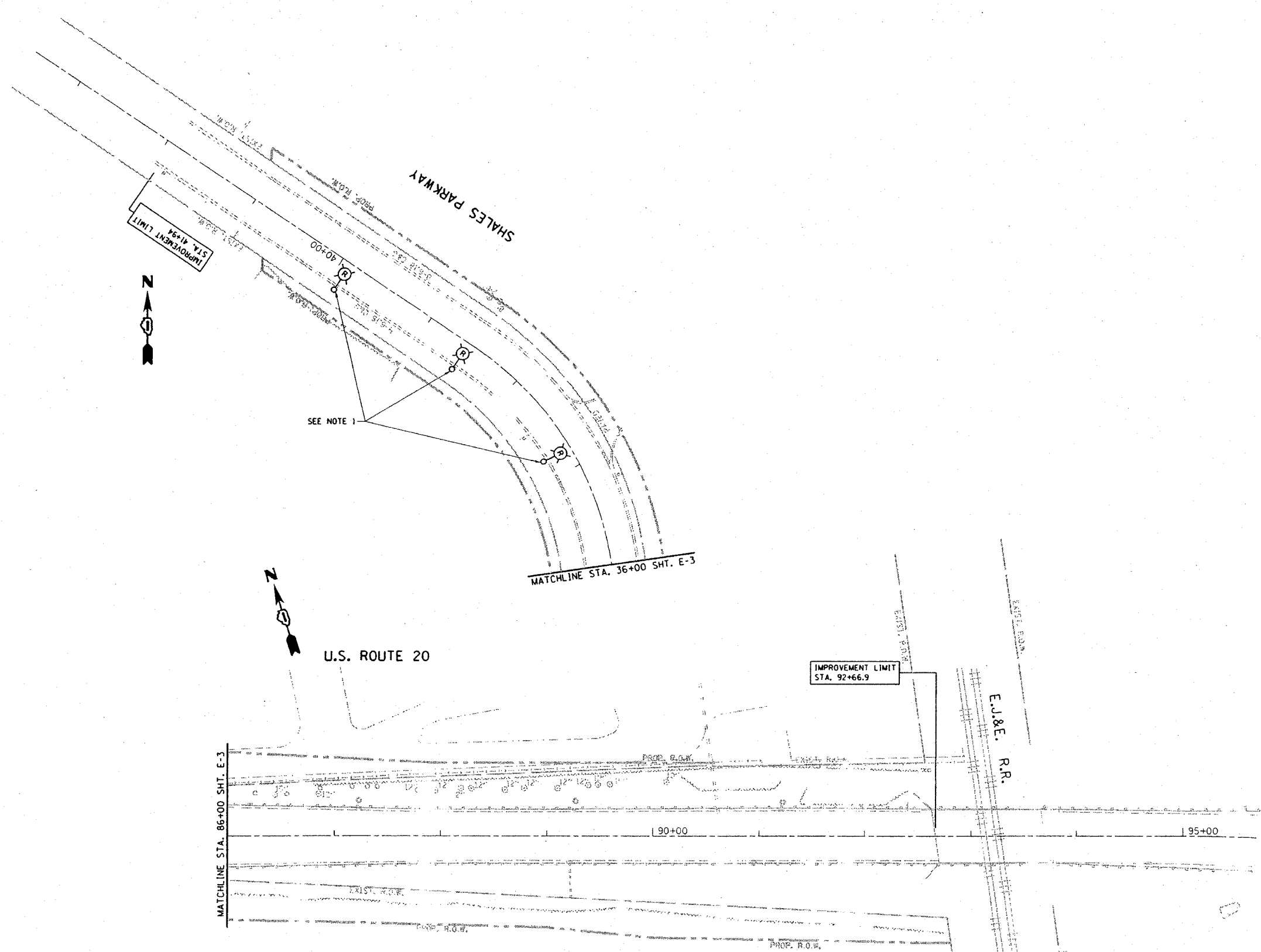


F.A.I. RTE.	SECTION	COUNTY	TOTAL SHEETS	SHEET NO.
345	BR-IN-1	COOK	196	96
STA. 86+00		TO STA. 92+66.9		
FED. ROAD DIST. NO.	ILLINOIS	FED. AID PROJECT		



IMPROVEMENT LIMIT
STA. 41+94



SEE NOTE 1

MATCHLINE STA. 36+00 SHT. E-3



U.S. ROUTE 20

IMPROVEMENT LIMIT
STA. 92+66.9

E.J.&E. R.R.

MATCHLINE STA. 86+00 SHT. E-3

90+00

95+00

E-4

REVISIONS	
NAME	DATE

ILLINOIS DEPARTMENT OF TRANSPORTATION
EXISTING LIGHTING PLAN 3
U.S. ROUTE 20 @
SHALES PARKWAY

SCALE: VERT. 1"=50'
 HORIZ. 1"=50'
 DATE 2/4/2008
 DRAWN BY AC
 CHECKED BY MEA/MJ

NOTE:
 1. CONTRACTOR TO REMOVE AND TRANSPORT LIGHT POLES TO THE CITY OF ELGIN LOCATION AS DESIGNATED BY THE ENGINEER.

PLOT DATE : 2/4/2008
 FILE NAME : c:\p\projects\113703\sh_lighting.dgn
 PLOT SCALE : 1/8"=1'-0" / 1/4"=1'-0"
 USER NAME : gregg@mea.com