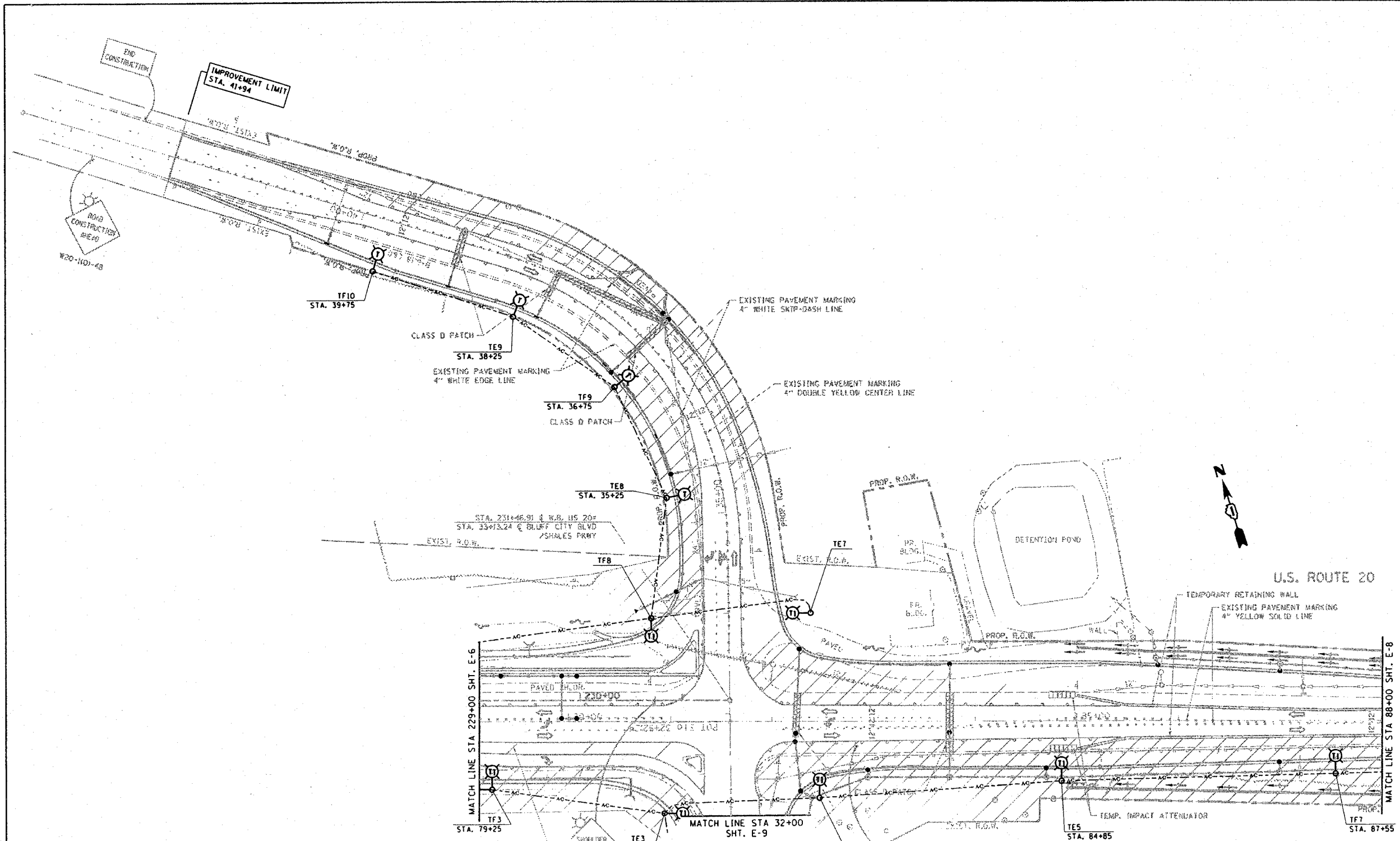


CONTRACT NO.				
F.A. RTE.	SECTION	COUNTY	TOTAL SHEETS	SHEET NO.
345	BR-1-N-1	Cook	196	99
STA.		TO STA.		
FED. ROAD DIST. NO.		ILLINOIS FED. AID PROJECT		



LEGEND

- SIGN
- DRUMS WITH STEADY BURN MONODIRECTIONAL LIGHT
- 50' C-C TANGENTS
- 25' C-C LANE SHIFTS & TAPERS
- 10' C-C RADII (TYP)
- WORK AREA

TYPE III TEMP. TAPE FOR WLT CONDITIONS LINE 12 DIAGONAL YELLOW (TYP)

WATER CURB	W2-1050-3618
WATER CURB	W2-1050-3618
WATER CURB	W2-1050-3618
WATER CURB	W2-1050-3618
WATER CURB	W2-1050-3618

REVISIONS	
NAME	DATE

ILLINOIS DEPARTMENT OF TRANSPORTATION
STAGE I CONSTRUCTION LIGHTING PLAN 2
U.S. RTE. 20 @ SHALES PARKWAY AND BLUFF CITY BLVD.
 SCALE: VERT. 1"=50'
 HORIZ. 1"=50'
 DATE 2/4/2008
 DRAWN BY AC
 CHECKED BY MEA/MJ

PLOT DATE : 2/4/2008
 FILE NAME : I:\projects\113703\sh_stage.dgn
 USER NAME : gmagliano