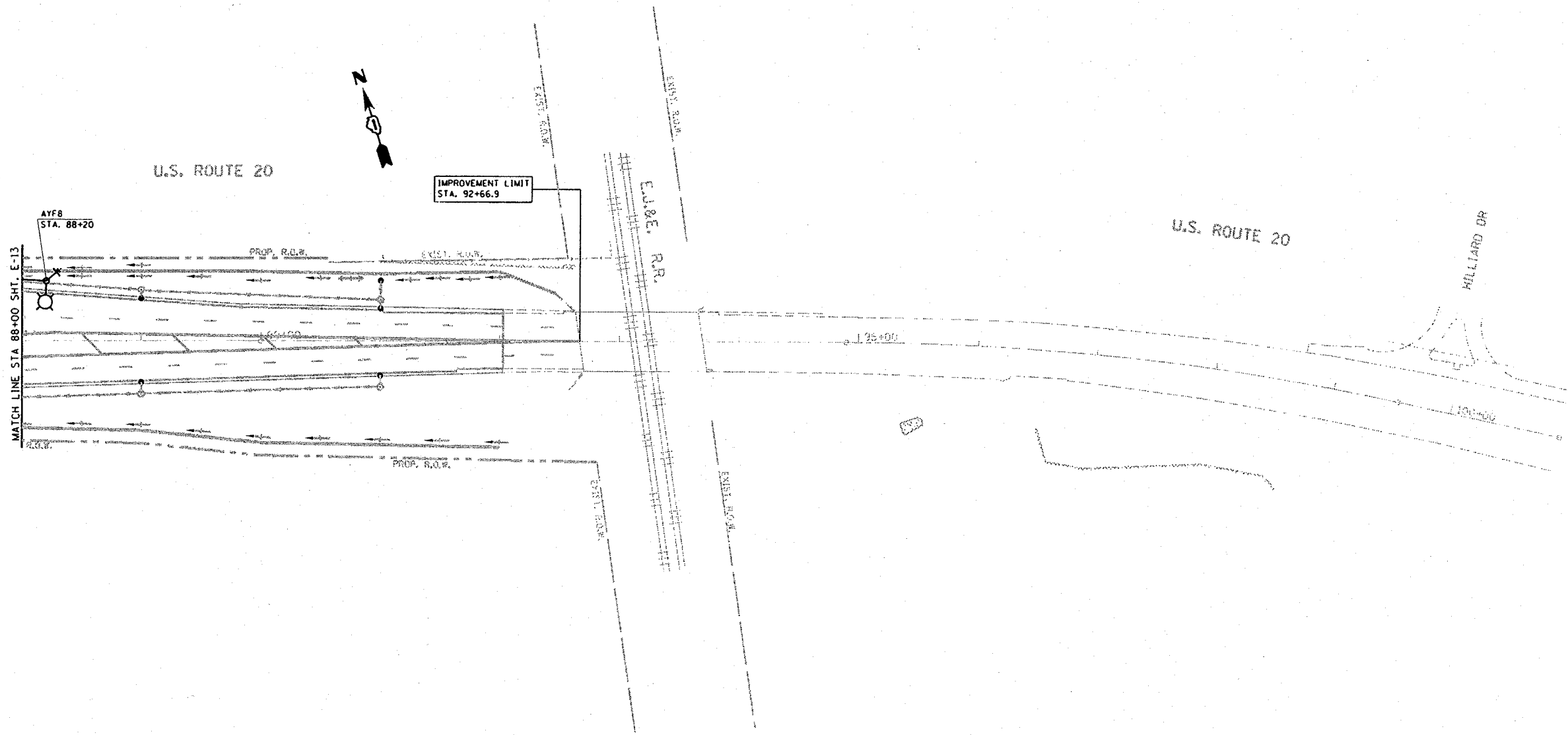

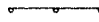
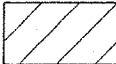


F.A. RYE.	SECTION	COUNTY	TOTAL SHEETS	SHEET NO.
345	BR-1-N-1	COOK	196	106
STA.		TO STA.		
FED. ROAD DIST. NO.		ILLINOIS FED. AID PROJECT		



LEGEND

-  SIGN
-  DRUMS WITH STEADY BURN MONODIRECTIONAL LIGHT
- 50' C-C TANGENTS
- 25' C-C LANE SHIFTS & TAPERS
- 10' C-C RADII (TYP)
-  WORK AREA

PLOT DATE : 2/17/2008
 PLOT SCALE : 1/4"=50'
 USER NAME : greg12008

REVISIONS	
NAME	DATE

E-14

ILLINOIS DEPARTMENT OF TRANSPORTATION
STAGE II CONSTRUCTION
LIGHTING PLAN 3
U.S. RTE. 20 @
SHALES PARKWAY AND BLUFF CITY BLVD.

VERT. 1"=50'
 SCALE: HORIZ.
 DATE 2/17/2008

DRAWN BY AC
 CHECKED BY MEA/MJ