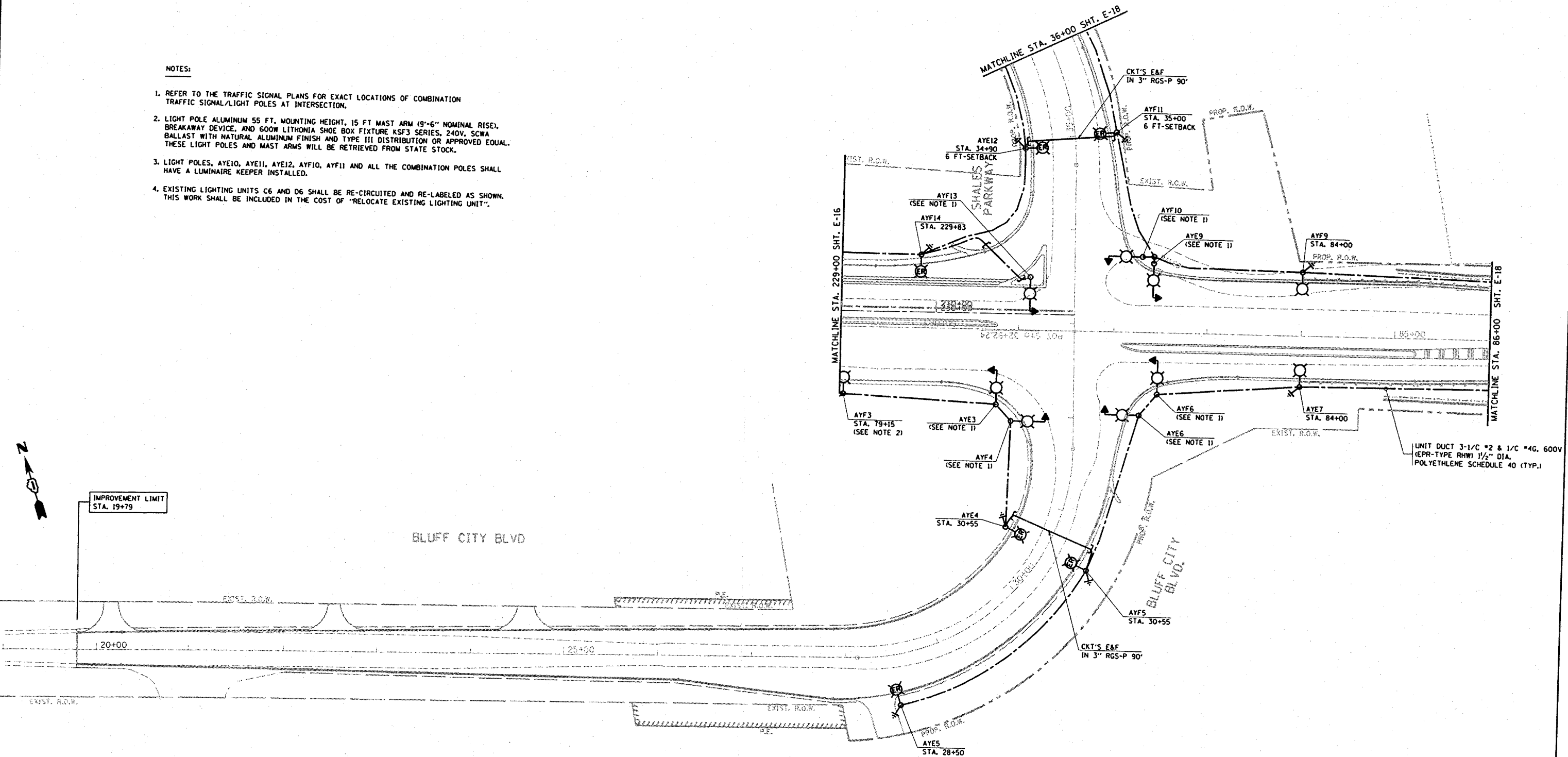


NOTES:

1. REFER TO THE TRAFFIC SIGNAL PLANS FOR EXACT LOCATIONS OF COMBINATION TRAFFIC SIGNAL/LIGHT POLES AT INTERSECTION.
2. LIGHT POLE ALUMINUM 55 FT. MOUNTING HEIGHT, 15 FT MAST ARM (9'-6" NOMINAL RISE), BREAKAWAY DEVICE, AND 600W LITHONIA SHOE BOX FIXTURE KSF3 SERIES, 240V, SCWA BALLAST WITH NATURAL ALUMINUM FINISH AND TYPE III DISTRIBUTION OR APPROVED EQUAL. THESE LIGHT POLES AND MAST ARMS WILL BE RETRIEVED FROM STATE STOCK.
3. LIGHT POLES, AYE10, AYE11, AYE12, AYE10, AYE11 AND ALL THE COMBINATION POLES SHALL HAVE A LUMINAIRE KEEPER INSTALLED.
4. EXISTING LIGHTING UNITS C6 AND D6 SHALL BE RE-CIRCUITED AND RE-LABELLED AS SHOWN. THIS WORK SHALL BE INCLUDED IN THE COST OF "RELOCATE EXISTING LIGHTING UNIT".



UNIT DUCT 3-1/4" #2 & 1/4" #4G, 600V (EPR-TYPE RHW) 1/2" DIA. POLYETHYLENE SCHEDULE 40 (TYP.)

E-17

REVISIONS	
NAME	DATE

ILLINOIS DEPARTMENT OF TRANSPORTATION
PROPOSED LIGHTING PLAN 2
U.S. ROUTE 20 @
SHALES PARKWAY

SCALE: VERT. 1"=50'
 HORIZ. DATE 3/25/2008

DRAWN BY AC
 CHECKED BY MEA/MJ

PLOT DATE: 3/25/2008
 FILE NAME: c:\p\projects\113783\sh_lighting.dgn
 PLOT SCALE: 1/8"=1'-0"
 USER NAME: gpagliano