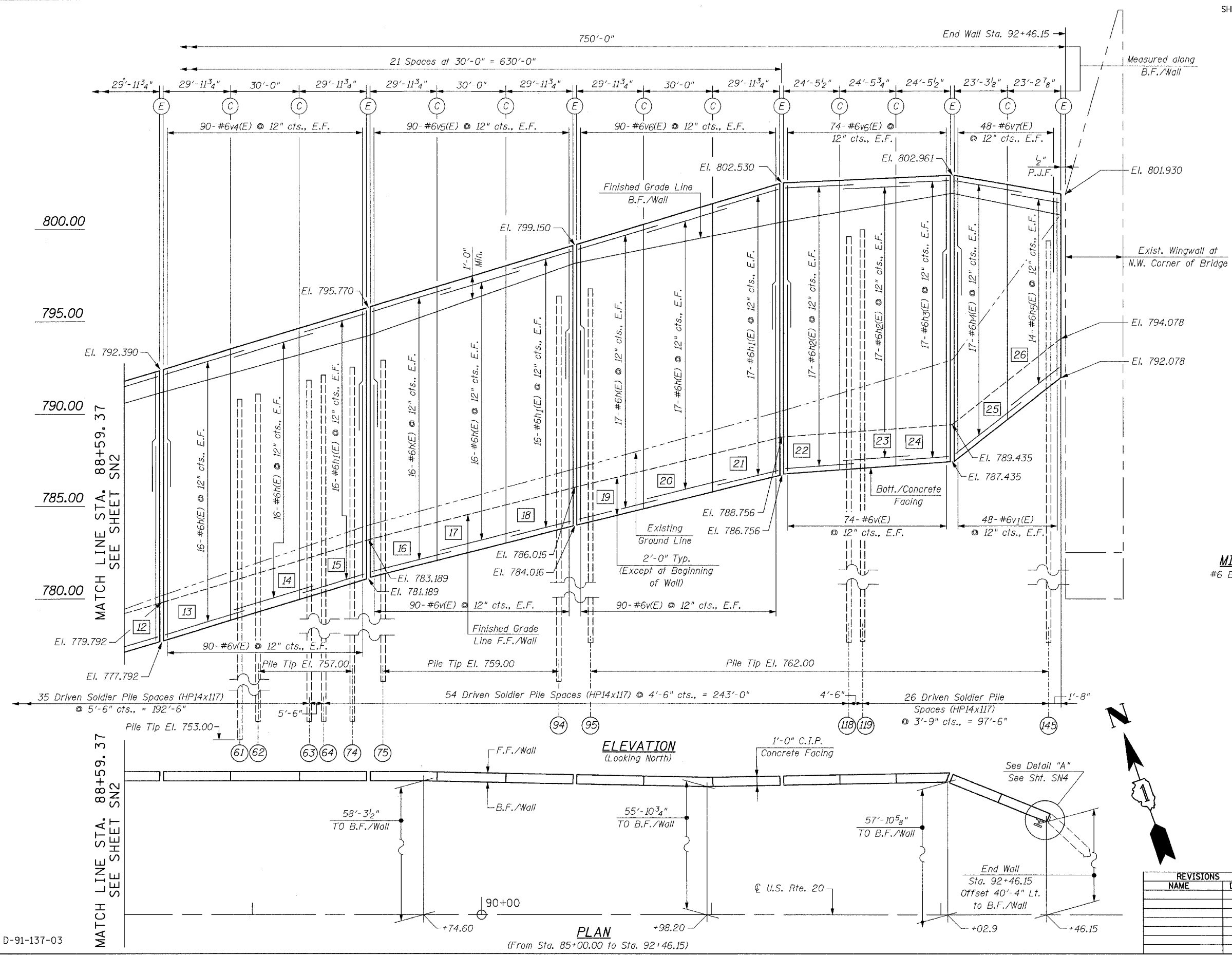


CAP. INT.	SECTION	COUNTY	TOTAL SHEETS	SHEET NO.
345	BR-1-N-1	COOK	104	122
STA. 85+00.00		TO STA. 92+46.15		
FED. ROAD DIST. NO.		ILLINOIS		
		FED. AID PROJECT		

CONTRACT NO. 62617



**MIN. LAP:**  
#6 Bars = 2'-7"

- LEGEND:**
- B.F. = Back Face
  - F.F. = Front Face
  - E.F. = Each Face
  - [1] = Panel Numbers
  - ⊙ = Pile Numbers

ILLINOIS DEPARTMENT OF TRANSPORTATION  
 GENERAL PLAN & ELEVATION  
 U.S. RTE. 20  
 AT BLUFF CITY / SHALES PARKWAY  
 NORTH SOLDIER PILE RETAINING WALL  
 F.A.P. 345 SECTION: BR-1-N-1  
 COOK COUNTY  
 STRUCTURE NO. 016-W969

REVISIONS	
NAME	DATE

SCALE: NONE  
 DATE: FEBRUARY, 2008  
 DRAWN BY: D.L./F.M.  
 CHECKED BY: B.N.S./J.C.N.  
**CHRISTIAN-ROGE & ASSOC., INC.**  
 CHICAGO ILLINOIS