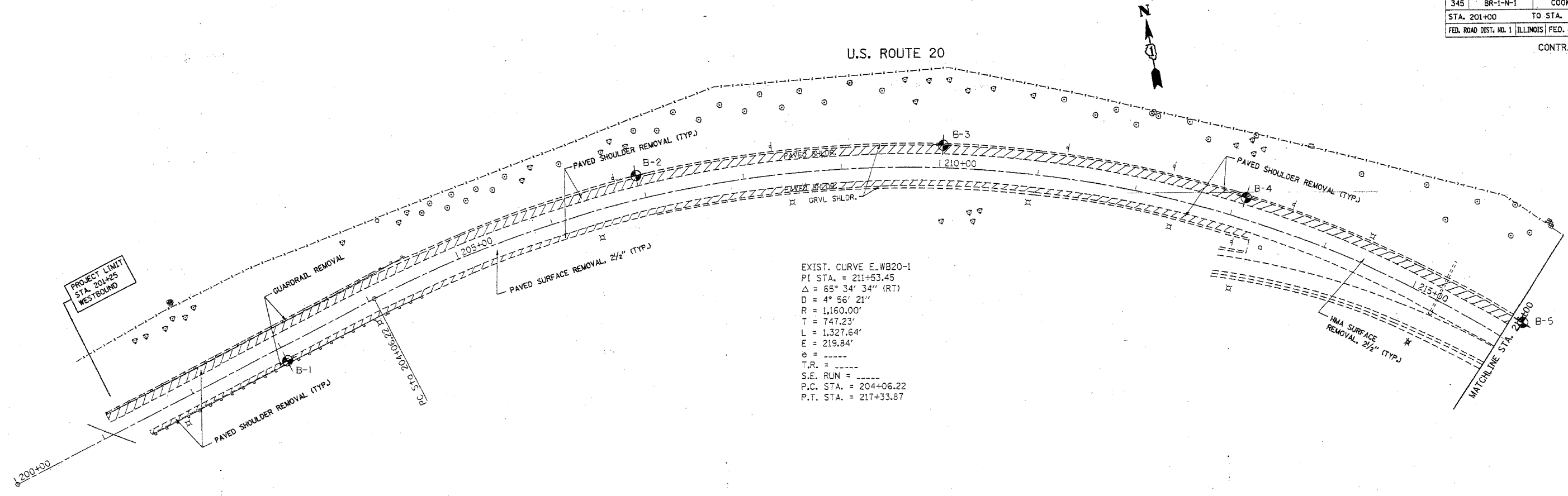


*REF-100001
*REF-0001

F.A.P. RTE.	SECTION	COUNTY	TOTAL SHEET NO.
345	BR-1-N-1	COOK	191 142
STA. 201+00		TO STA. 216+00	
FED. ROAD DIST. NO. 1 ILLINOIS FED. AID PROJECT			

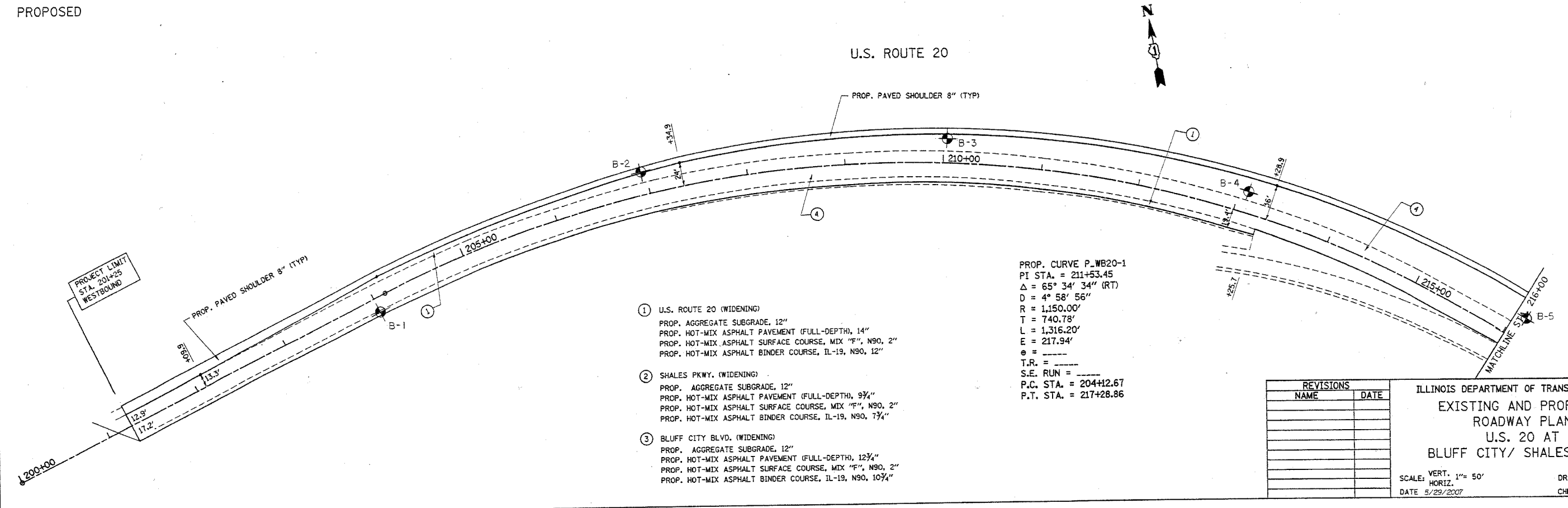
CONTRACT NO. 62617



EXIST. CURVE E.WB20-1
 PI STA. = 211+53.45
 $\Delta = 65^\circ 34' 34''$ (RT)
 $D = 4^\circ 56' 21''$
 $R = 1,160.00'$
 $T = 747.23'$
 $L = 1,327.64'$
 $E = 219.84'$
 $e =$
 $T.R. =$
 $S.E. RUN =$
 $P.C. STA. = 204+06.22$
 $P.T. STA. = 217+33.87$

EXISTING

PROPOSED



PROP. CURVE P.WB20-1
 PI STA. = 211+53.45
 $\Delta = 65^\circ 34' 34''$ (RT)
 $D = 4^\circ 58' 56''$
 $R = 1,150.00'$
 $T = 740.78'$
 $L = 1,316.20'$
 $E = 217.94'$
 $e =$
 $T.R. =$
 $S.E. RUN =$
 $P.C. STA. = 204+12.67$
 $P.T. STA. = 217+28.86$

- ① U.S. ROUTE 20 (WIDENING)
 PROP. AGGREGATE SUBGRADE, 12"
 PROP. HOT-MIX ASPHALT PAVEMENT (FULL-DEPTH), 14"
 PROP. HOT-MIX ASPHALT SURFACE COURSE, MIX "F", N90, 2"
 PROP. HOT-MIX ASPHALT BINDER COURSE, IL-19, N90, 12"
- ② SHALES PKWY. (WIDENING)
 PROP. AGGREGATE SUBGRADE, 12"
 PROP. HOT-MIX ASPHALT PAVEMENT (FULL-DEPTH), 9 3/4"
 PROP. HOT-MIX ASPHALT SURFACE COURSE, MIX "F", N90, 2"
 PROP. HOT-MIX ASPHALT BINDER COURSE, IL-19, N90, 7 3/4"
- ③ BLUFF CITY BLVD. (WIDENING)
 PROP. AGGREGATE SUBGRADE, 12"
 PROP. HOT-MIX ASPHALT PAVEMENT (FULL-DEPTH), 12 3/4"
 PROP. HOT-MIX ASPHALT SURFACE COURSE, MIX "F", N90, 2"
 PROP. HOT-MIX ASPHALT BINDER COURSE, IL-19, N90, 10 3/4"

REVISIONS	
NAME	DATE

ILLINOIS DEPARTMENT OF TRANSPORTATION
 EXISTING AND PROPOSED
 ROADWAY PLAN
 U.S. 20 AT
 BLUFF CITY/ SHALES PKWY.

SCALE: VERT. 1" = 50'
 HORIZ. DATE 5/29/2007

DRAWN BY
 CHECKED BY