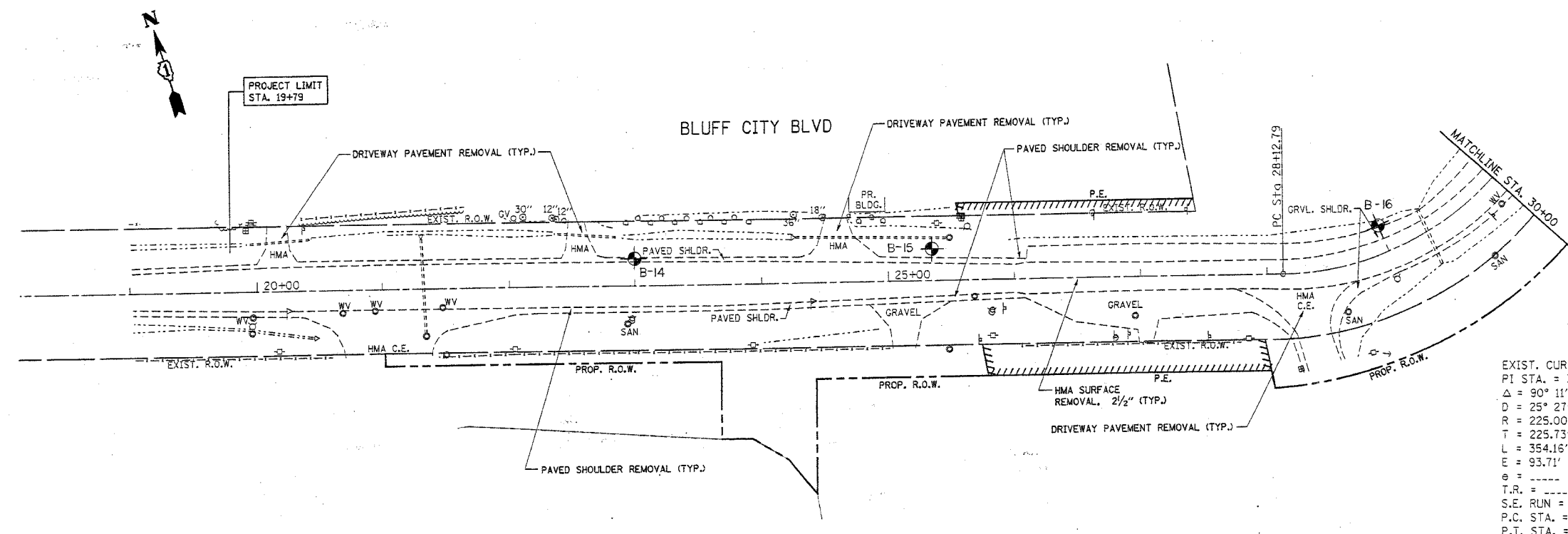


*REF-100004
*REF-10004

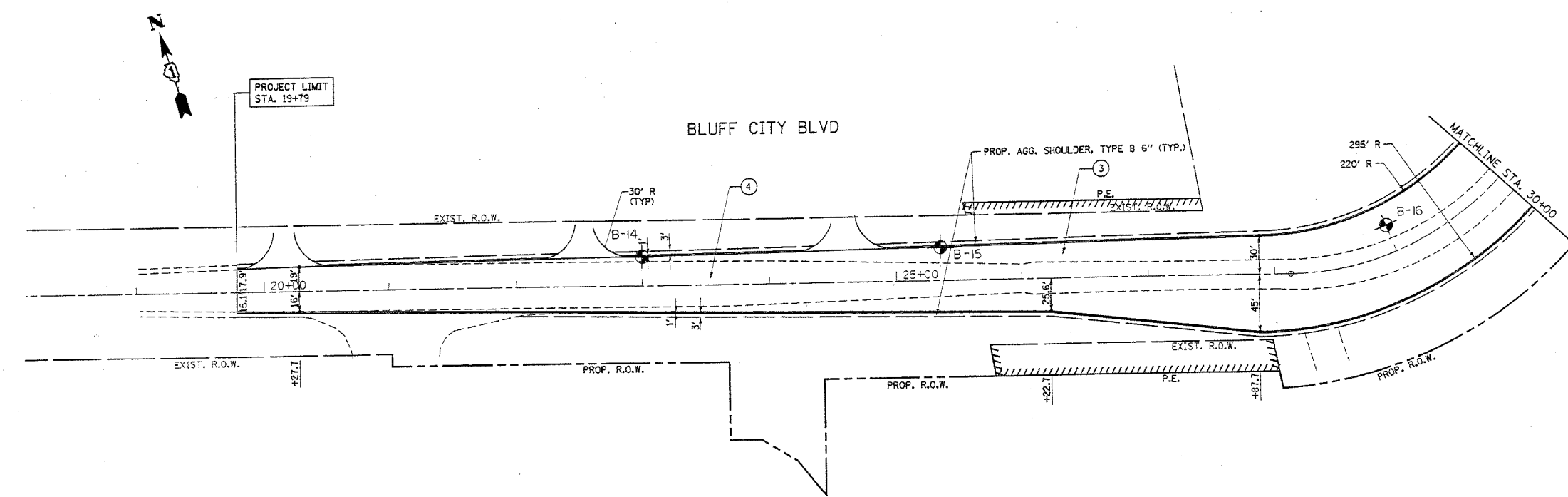
F.A.P. RTE.	SECTION	COUNTY	TOTAL SHEETS	SHEET NO.
345	BR-1-N-1	COOK	196	147
STA. 19+79		TO STA. 30+00		
FED. ROAD DIST. NO. 1 ILLINOIS FED. AID PROJECT				
CONTRACT NO. 62617				



EXIST. CURVE E. BLUFF-1
 PI STA. = 30+38.52
 $\Delta = 90^\circ 11' 08''$ (LT)
 $D = 25^\circ 27' 53''$
 $R = 225.00'$
 $T = 225.73'$
 $L = 354.16'$
 $E = 93.71'$
 $e =$
 $T.R. =$
 $S.E. RUN =$
 $P.C. STA. = 28+12.79$
 $P.T. STA. = 31+66.95$

EXISTING

PROPOSED



- ① U.S. ROUTE 20 (WIDENING)
 PROP. AGGREGATE SUBGRADE, 12"
 PROP. HOT-MIX ASPHALT PAVEMENT (FULL-DEPTH), 14"
 PROP. HOT-MIX ASPHALT SURFACE COURSE, MIX "F", N90, 2"
 PROP. HOT-MIX ASPHALT BINDER COURSE, IL-19, N90, 12"
- ② SHALES PKWY. (WIDENING)
 PROP. AGGREGATE SUBGRADE, 12"
 PROP. HOT-MIX ASPHALT PAVEMENT (FULL-DEPTH), 9 3/4"
 PROP. HOT-MIX ASPHALT SURFACE COURSE, MIX "F", N90, 2"
 PROP. HOT-MIX ASPHALT BINDER COURSE, IL-19, N90, 7 3/4"
- ③ BLUFF CITY BLVD. (WIDENING)
 PROP. AGGREGATE SUBGRADE, 12"
 PROP. HOT-MIX ASPHALT PAVEMENT (FULL-DEPTH), 12 3/4"
 PROP. HOT-MIX ASPHALT SURFACE COURSE, MIX "F", N90, 2"
 PROP. HOT-MIX ASPHALT BINDER COURSE, IL-19, N90, 10 3/4"

REVISIONS	
NAME	DATE

ILLINOIS DEPARTMENT OF TRANSPORTATION
 EXISTING AND PROPOSED
 ROADWAY PLAN
 U.S. 20 AT
 BLUFF CITY/ SHALES PKWY.
 SCALE: VERT. 1" = 50'
 HORIZ. DATE 5/29/2007
 DRAWN BY
 CHECKED BY