

F.A. RTE.	SECTION	COUNTY	TOTAL SHEETS	SHEET NO.
330	17 RS-3	WILL	32	1
FED. ROAD DIST. NO.	ILLINOIS	CONTRACT NO.	62749	

STATE OF ILLINOIS
DEPARTMENT OF TRANSPORTATION

DIVISION OF HIGHWAYS
**PROPOSED
HIGHWAY PLANS**

FAP 330 (US 45 / US 52)

SECTION: 17 RS-3

STUENKEL ROAD TO KANKAKEE COUNTY LINE

RESURFACING (3P)

PROJECT: ACNHF-0330(04)

WILL COUNTY

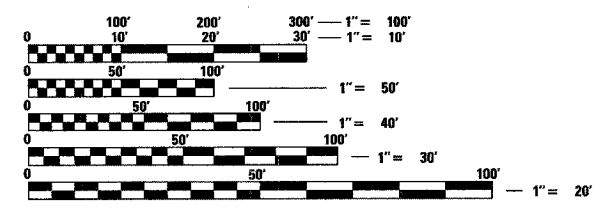
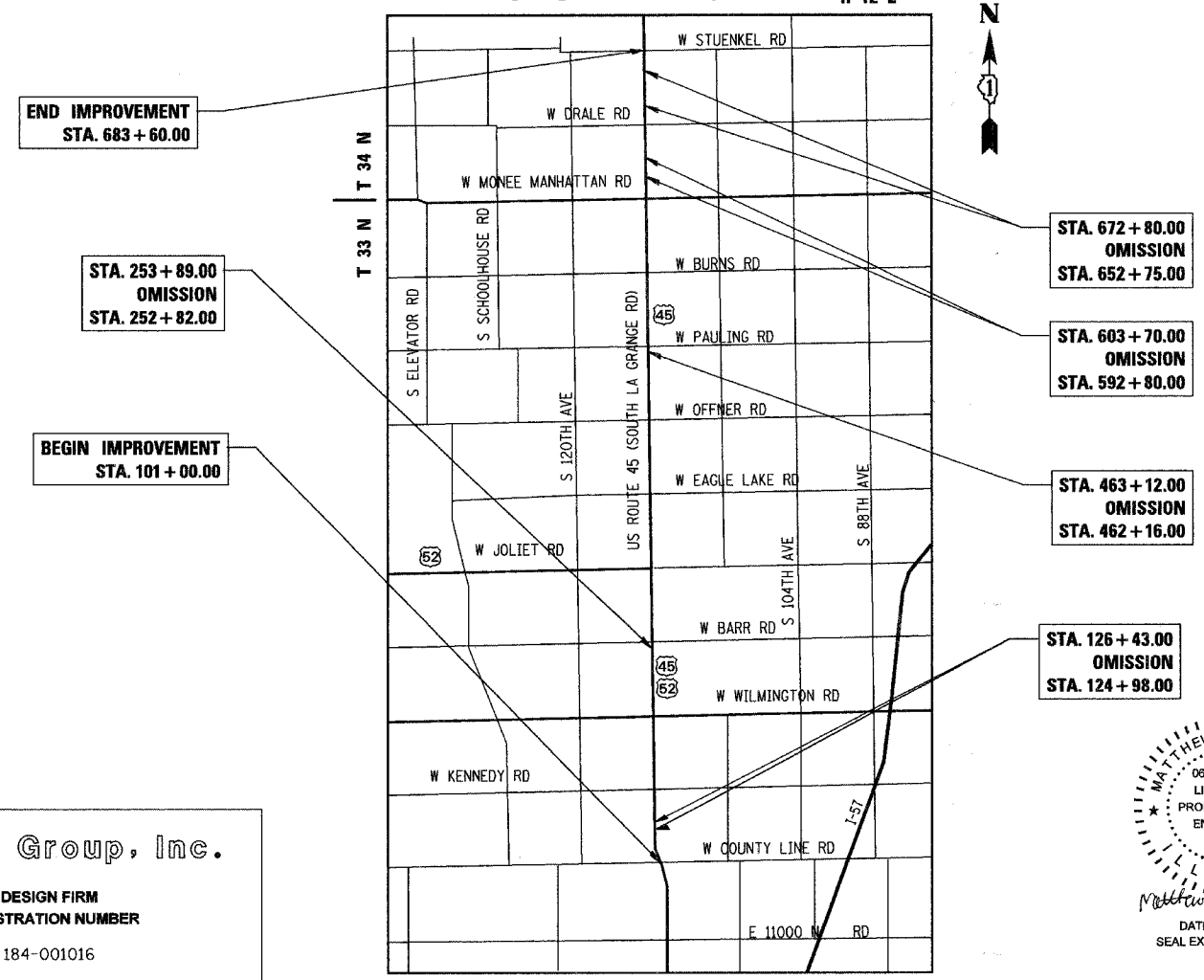
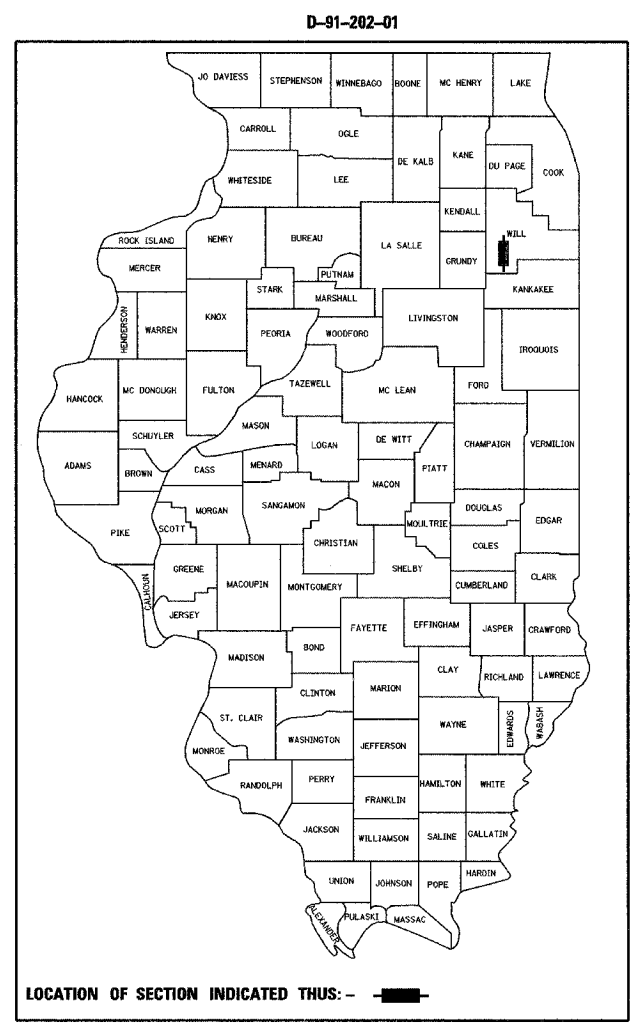
C-91-211-04

FOR INDEX OF SHEETS, SEE SHEET NO. 2

THIS IMPROVEMENT IS LOCATED
IN GREEN GARDEN TOWNSHIP
AND PEOTONE TOWNSHIP

TRAFFIC DATA

2005 ADT - 6,100
POSTED SPEED LIMIT - 55 MPH



FULL SIZE PLANS HAVE BEEN PREPARED USING STANDARD
ENGINEERING SCALES. REDUCED SIZED PLANS WILL NOT
CONFORM TO STANDARD SCALES. IN MAKING MEASUREMENTS
ON REDUCED PLANS, THE ABOVE SCALES MAY BE USED.

J.U.L.I.E.
JOINT UTILITY LOCATION INFORMATION FOR EXCAVATION
1-800-892-0123
OR 811

Clorba Group, Inc.
DESIGN FIRM
REGISTRATION NUMBER
184-001016
CONSULTING ENGINEERS
SUITE 402, 5507 NORTH CUMBERLAND AVE
CHICAGO, ILLINOIS 60656 ☎ (773) 775-4009

MATTHEW J. LEHAN
062-057158
LICENSED
PROFESSIONAL
ENGINEER
OF
ILLINOIS
DATE: 4/1/2008
SEAL EXPIRES: 11/30/2009

STATE OF ILLINOIS
DEPARTMENT OF TRANSPORTATION
DIVISION OF HIGHWAYS

SUBMITTED APRIL 1, 2008

Diane M. O'Keefe
DEPUTY DIRECTOR OF HIGHWAYS, REGION ENGINEER

May 9, 2008
Eric E. Harrod
Interim ENGINEER OF DESIGN AND ENVIRONMENT

May 9, 2008
Christine M. Reed
DIRECTOR OF HIGHWAYS, CHIEF ENGINEER

**PRINTED BY THE AUTHORITY
OF THE STATE OF ILLINOIS**

GREEN GARDEN TOWNSHIP / PEOTONE TOWNSHIP
LOCATION MAP
1" = 5000'
GROSS LENGTH OF PROJECT = 58260 FT = 11.03 MI.
NET LENGTH OF PROJECT = 54917 FT = 10.40 MI.

DISTRICT 1 DESIGN PLAN PREPARATION ENGINEER: K. ENG (847)705-4247

CONTRACT NO. 62749