

STATE OF ILLINOIS  
DEPARTMENT OF TRANSPORTATION  
DIVISION OF HIGHWAYS

F.A.P. RTE.	SECTION	COUNTY	TOTAL SHEETS	SHEET NO.
607	130 RS-3	WILL	17	1
FED. ROAD DIST. NO.		ILLINOIS	CONTRACT NO. 62787	

FOR INDEX OF SHEETS, SEE SHEET NO. 2

PROJECT LOCATED  
IN THE VILLAGE OF SHOREWOOD

# PROPOSED HIGHWAY PLANS

FAP ROUTE 607/US 52 ( TROY RD. )

SECTION: 130 RS-3

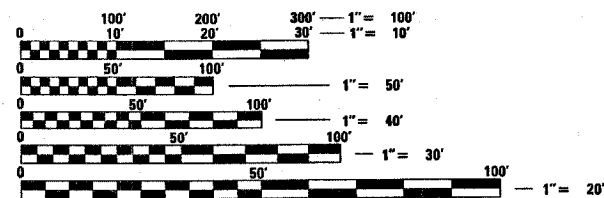
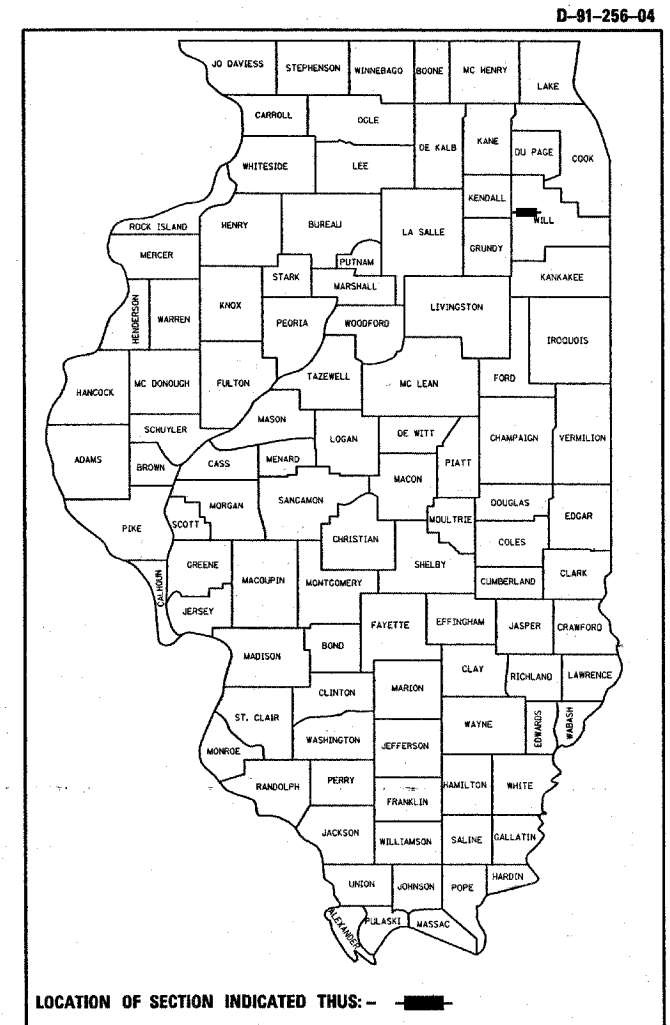
KENDALL CO. LINE TO RIVER RD.

RESURFACING ( MAINTENANCE )

PROJECT: *ACNHF-0607(076)*

WILL COUNTY

C-91-256-04



FULL SIZE PLANS HAVE BEEN PREPARED USING STANDARD ENGINEERING SCALES. REDUCED SIZED PLANS WILL NOT CONFORM TO STANDARD SCALES. IN MAKING MEASUREMENTS ON REDUCED PLANS, THE ABOVE SCALES MAY BE USED.

J.U.L.I.E.  
JOINT UTILITY LOCATION INFORMATION FOR EXCAVATION  
1-800-892-0123  
OR 811

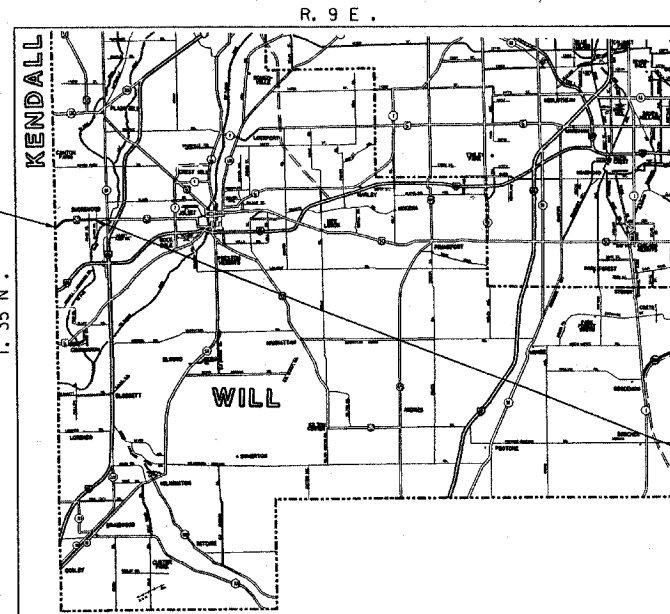
PROJECT ENGINEER - FRITZ GUILLAUME  
PROJECT MANAGER - KEN ENG (847) 705-4247

CONTRACT NO. 62787

PROJECT BEGINS  
STATION 493+16

OMISSION  
STA 551+00 TO STA 551+15  
STA 560+75 TO STA 574+65

PROJECT ENDS  
STATION 600+47



TRAFFIC DATA :  
2001 ADT = 5900  
POSTED SPEED LIMIT = 35-55 MPH

TROY TOWNSHIP

GROSS LENGTH OF PROJECT = 10,731 LIN. FT. = 2.03 MILES  
NET LENGTH OF PROJECT = 9,326 LIN. FT. = 1.77 MILES

STATE OF ILLINOIS  
DEPARTMENT OF TRANSPORTATION  
DIVISION OF HIGHWAYS

SUBMITTED APRIL 3, 2008

Diana M. O'Keefe  
DEPUTY DIRECTOR OF HIGHWAYS, REGION ENGINEER

May 9, 2008  
Eric E. Horn  
INTERIM ENGINEER OF DESIGN AND ENVIRONMENT

May 9, 2008  
Christine M. Reed  
DIRECTOR OF HIGHWAYS, CHIEF ENGINEER

PRINTED BY THE AUTHORITY  
OF THE STATE OF ILLINOIS

**INDEX OF SHEETS**

SHEET NO.	DESCRIPTION
1	TITLE SHEET
2	INDEX OF SHEET, STATE STANDARDS, AND GENERAL NOTES
3	SUMMARY OF QUANTITIES
4	TYPICAL SECTIONS PLAN
5-10	ROADWAY & PAVEMENT MARKING PLANS
11	PAVEMENT PATCHING FOR HMA SURFACED PAVEMENT
12	BUTT JOINTS AND HMA TAPER DETAILS
13	TRAFFIC CONTROL AND PROTECTION FOR SIDE ROADS, INTERSECTIONS, AND DRIVEWAYS
14	TYPICAL APPLICATIONS RAISED REFLECTIVE PAVEMENT MARKERS (SNOW-PLOW RESISTANT)
15	DISTRICT ONE TYPICAL PAVEMENT MARKINGS
16	PAVEMENT MARKINGS LETTERS & SYMBOLS FOR TRAFFIC STAGING
17	ARTERIAL ROAD INFORMATION SIGN

**STATE STANDARDS**

000001-05	STANDARDS SYMBOLS, ABBREVIATIONS AND PATTERNS
442201-03	CLASS C AND D PATCHES
701301-02	LANE CLOSURE 2L, 2W SHORT TIME OPERATIONS
701306-01	LANE CLOSURE 2L, 2W SLOW MOVING OPERATIONS-DAY ONLY ( FOR SPEEDS>45 MPH)
701311-02	LANE CLOSURE 2L, 2W MOVING OPERATIONS-DAY ONLY
701901	TRAFFIC CONTROL DEVICES
780001-01	TYPICAL PAVEMENT MARKINGS

**GENERAL NOTES**

BEFORE STARTING ANY EXCAVATION, THE CONTRACTOR SHALL CALL "JULIE" AT 800-892-0123 OR 811 FOR FIELD LOCATIONS OF BURIED ELECTRIC, TELEPHONE AND GAS FACILITIES. (48 HOURS NOTIFICATION REQUIRED)

THE CONTRACTOR SHALL COORDINATE CONSTRUCTION ACTIVITIES WITH UTILITY COMPANIES AND THE VILLAGE OF SHOREWOOD

THE CONTRACTOR WILL NOT BE ALLOWED TO SET UP A YARD OR FIELD OFFICE ON STATE PROPERTY WITHOUT WRITTEN PERMISSION FROM THE DEPARTMENT

WHEN MILLED PAVEMENT IS OPEN TO TRAFFIC, THE MAXIMUM GRADE DIFFERENTIAL BETWEEN PASSES OF THE MILLING MACHINE SHALL NOT EXCEED 40 MM (1 3/4 INCHES) WHERE THE SPEED LIMIT IS 80 KM/H (45 MPH) OR LESS AND 25 MM (1 INCH) WHERE THE SPEED LIMIT IS GREATER THAN 80 KM/H (45 MPH). WITH WRITTEN APPROVAL FROM THE ENGINEER, A MAXIMUM GRADE DIFFERENTIAL OF 75 MM (3 INCHES) MAY BE ALLOWED IF THE EDGE OF THE MILLING IS SLOPED A MINIMUM 1:3 (V:H)

BUTT JOINTS WILL BE INSTALLED AT THE ENDS OF ALL RESURFACING (WHERE RESURFACING MEETS EXISTING PAVEMENT), IN ACCORDANCE WITH THE "BUTT JOINT AND HMA TAPER DETAILS" SHEET INCLUDED IN THE PLANS, UNLESS OTHERWISE SPECIFIED

THE RESIDENT ENGINEER SHALL CONTACT MR. CORY JUCIUS, TRAFFIC FIELD TECHNICIAN AT 815-485-6475 PRIOR TO INSTALL OF FINAL PAVEMENT MARKINGS

DESIGNERS BASED QUANTITIES ON PATCHING FIRST THEN MILLING

NO PERMANENT LANE CLOSURES WILL BE ALLOWED. MILLING, RESURFACING, AND PATCHING OPERATIONS WILL BE DONE WITH DAY TIME LANE CLOSURES ONLY

ALL PAVEMENT PATCHING LOCATIONS WILL BE DETERMINED IN THE FIELD BY THE ENGINEER IT SHALL BE THE CONTRACTOR'S RESPONSIBILITY TO VERIFY ALL DIMENSIONS AND CONDITIONS EXISTING IN THE FIELD PRIOR TO CONSTRUCTION AND ORDERING OF MATERIALS

DOUBLE LANE MARKERS ARE TO BE USED AS SHOWN ON THE DISTRICT ONE DETAIL "TYPICAL APPLICATIONS - RAISED REFLECTIVE PAVEMENT MARKERS (SNOW-PLOW RESISTANT)" SHOWN IN THE PLANS

PAVEMENT MARKING TAPE, TYPE III SHALL BE USED FOR SHORT TERM PAVEMENT MARKINGS ON ALL FINAL SURFACES. THE COST OF THE PAVEMENT MARKING TAPE, TYPE III AND ITS REMOVAL SHALL BE INCLUDED IN THE COST OF SHORT TERM PAVEMENT MARKING

THE RESIDENT ENGINEER SHALL VERIFY ALL EXISTING PAVEMENT MARKINGS BEFORE MILLING

DO NOT SCALE PLANS FOR CONSTRUCTION DIMENSIONS

FILE NAME = c:\projects\125604\sh_design_00.dgn	USER NAME = guillaumejp	DESIGNED -	REVISED -	<b>STATE OF ILLINOIS DEPARTMENT OF TRANSPORTATION</b>	<b>US 52 /TROY RD. (KENDALL CO. LINE TO RIVER RD.) INDEX OF SHEETS, STATE STANDARDS AND GENERAL NOTES</b>	F.A.P RTE. 607	SECTION 130 RS-3	COUNTY WILL	TOTAL SHEETS 17	SHEET NO. 2	
PLOT SCALE = 50.0000' / IN.	CHECKED -	REVISED -	SCALE:			SHEET NO. OF SHEETS	STA. TO STA.	FED. ROAD DIST. NO. 1 ILLINOIS FED. AID PROJECT			
PLOT DATE = 4/5/2008	DATE -	REVISED -	CONTRACT NO. 62787								

SUMMARY OF QUANTITIES			URBAN 80% FED. 20% STATE TOTAL QUANTITIES	CONSTRUCTION TYPE CODE				
CODE NO	ITEM	UNIT		1000				
20201006	GRADING AND SHAPING SHOULDERS	UNIT	188	188				
40600200	BITUMINOUS MATERIALS (PRIME COAT)	TON	13	13				
40600300	AGGREGATE (PRIME COAT)	TON	64	64				
40600400	MIXTURE FOR CRACKS, JOINTS, AND FLANGEWAYS	TON	20	20				
40600895	CONSTRUCTING TEST STRIP	EACH	2	2				
40600982	HOT-MIX ASPHALT SURFACE REMOVAL - BUTT JOINT	SO YD	100	100				
40601005	HOT-MIX ASPHALT REPLACEMENT OVER PATCHES	TON	1600	1600				
40603335	HOT-MIX ASPHALT SURFACE COURSE, MIX "D", N50	TON	2670	2670				
44000158	HOT-MIX ASPHALT SURFACE REMOVAL. 2 1/4"	SO YD	31737	31737				
44002224	HOT-MIX ASPHALT REMOVAL OVER PATCHES, 6"	SO YD	4760	4760				
44201753	CLASS D PATCHES, TYPE II, 9 INCH	SO YD	2856	2856				
44201757	CLASS D PATCHES, TYPE III, 9 INCH	SO YD	952	952				
44201759	CLASS D PATCHES, TYPE IV, 9 INCH	SO YD	952	952				
48102100	AGGREGATE WEDGE SHOULDER, TYPE B	TON	1687	1687				
67000400	ENGINEER'S FIELD OFFICE, TYPE A	CAL MO	2	2				
67100100	MOBILIZATION	L SUM	1	1				
70100460	TRAFFIC CONTROL AND PROTECTION, STANDARD T01306	L SUM	1	1				
70300100	SHORT-TERM PAVEMENT MARKING	FOOT	10180	10180				
70300210	TEMPORARY PAVEMENT MARKING - LETTERS AND SYMBOLS	SO FT	196	196				
70300220	TEMPORARY PAVEMENT MARKING - LINE 4"	FOOT	35008	35008				
70300240	TEMPORARY PAVEMENT MARKING - LINE 6"	FOOT	360	360				
70300260	TEMPORARY PAVEMENT MARKING - LINE 12"	FOOT	580	580				
70300280	TEMPORARY PAVEMENT MARKING - LINE 24"	FOOT	30	30				
* 78000100	THERMOPLASTIC PAVEMENT MARKING - LETTERS AND SYMBOLS	SO FT	196	196				

SUMMARY OF QUANTITIES			URBAN 80% FED. 20% STATE TOTAL QUANTITIES	CONSTRUCTION TYPE CODE				
CODE NO	ITEM	UNIT		1000				
* 78000200	THERMOPLASTIC PAVEMENT MARKING - LINE 4"	FOOT	35008	35008				
* 78000400	THERMOPLASTIC PAVEMENT MARKING - LINE 6"	FOOT	360	360				
* 78000600	THERMOPLASTIC PAVEMENT MARKING - LINE 12"	FOOT	580	580				
* 78000650	THERMOPLASTIC PAVEMENT MARKING - LINE 24"	FOOT	30	30				
* 78100100	RAISED REFLECTIVE PAVEMENT MARKER	EACH	250	250				
78300200	RAISED REFLECTIVE PAVEMENT MARKER REMOVAL	EACH	230	230				
X0322256	TEMPORARY INFORMATION SIGNING	SO FT	51.4	51.4				
X4067107	POLYMERIZED LEVELING BINDER (MACHINE METHOD), IL-4.75, N50	TON	1340	1340				
Z0048665	RAILROAD PROTECTIVE LIABILITY INSURANCE	L SUM	1	1				
* Z0076600	TRAINEES	HOURL	1000	1000				

4/5/2008  
add: collect: table: section: station: on: go

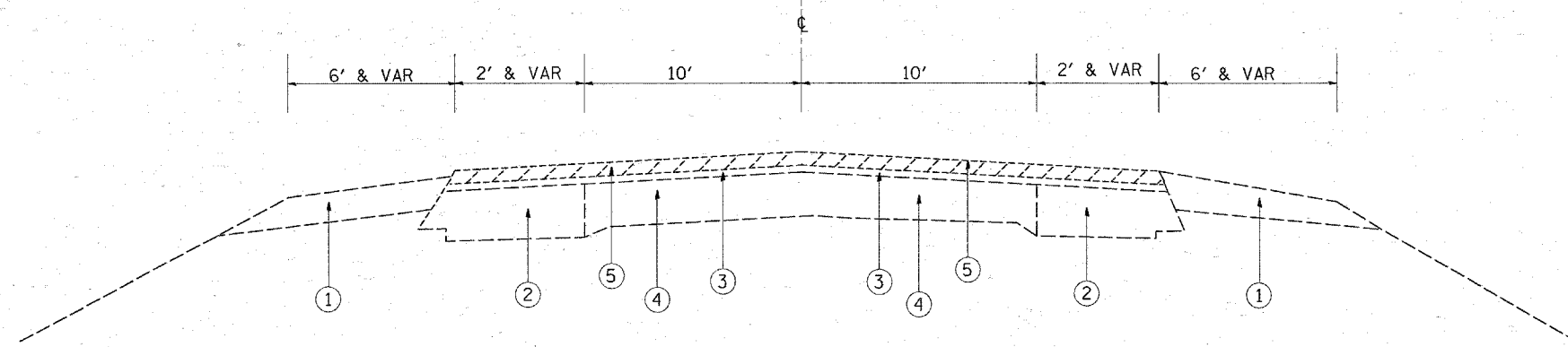
\* Y080  
\* SPECIALTY ITEMS

REVISIONS	
NAME	DATE

ILLINOIS DEPARTMENT OF TRANSPORTATION  
SUMMARY OF QUANTITIES

# LEGEND

- ① EXISTING AGGREGATE SHOULDER
- ② EXISTING BASE COURSE WIDENING
- ③ EXISTING HMA SURFACE COURSE ±6"
- ④ EXISTING P.C.C. BASE COURSE, 9"-7"-9"
- ⑤ PROP. HMA SURFACE REMOVAL, 2 1/4"
- ⑥ PROPOSED POLYMERIZED LEVELING BINDER (MACHINE METHOD), IL-4.75, N50, 3/4"
- ⑦ PROPOSED HMA SURFACE COURSE, MIX "D", N50, 1 1/2"
- ⑧ EXISTING HMA OVERLAY AFTER MILLING
- ⑨ PROP. AGGREGATE WEDGE SHOULDERS, TYPE B

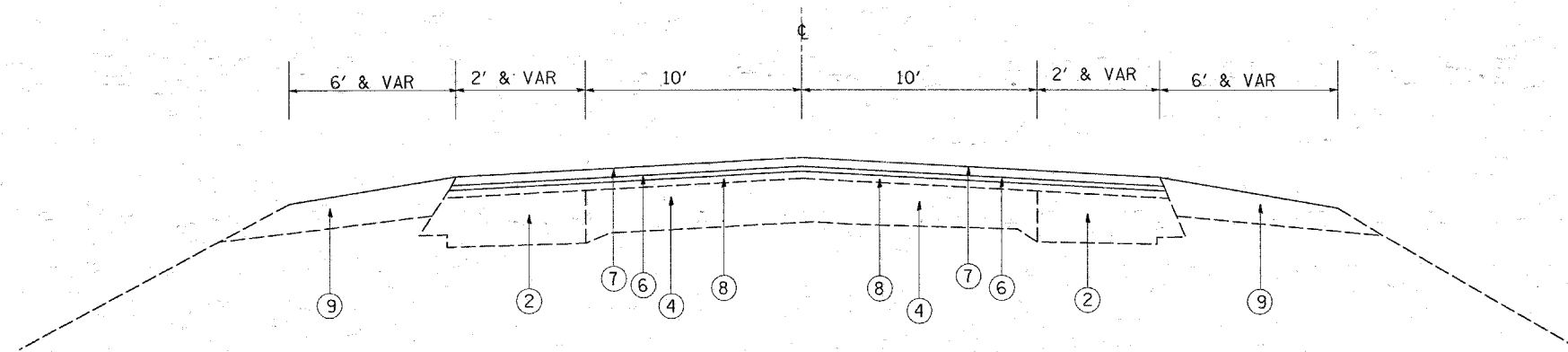


US 52 (TROY RD.)  
EXISTING TYPICAL SECTION

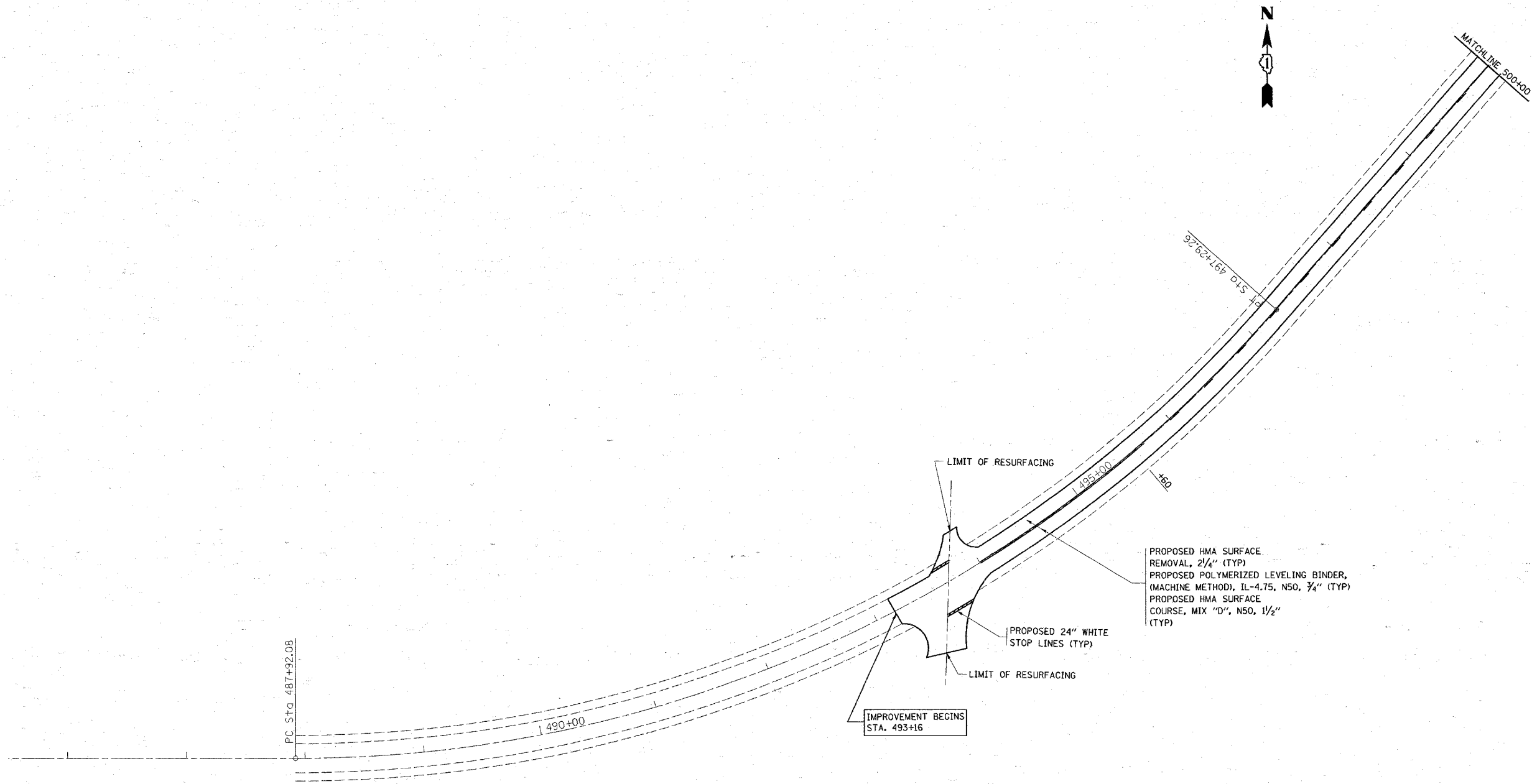
HOT-MIX ASPHALT MIXTURE REQUIREMENTS		
MIXTURE TYPE	AC/PG	DESIGN AIR VOIDS
HMA SURFACE COURSE MIX D, N 50 (IL-9.5mm)	PG 64-22	4% @ 70 GYR
POLYMERIZED LEVELING BINDER (MACHINE METHOD), IL-4.75, N50	SBS/SBR PG 76-28/-22	4% @ 50 GYR
CLASS D PATCHES (HMA BINDER IL 19 mm)	PG 64-22*	4% @ 70 GYR
HMA REPLACEMENT OVER PATCHES (HMA BINDER IL-19 mm)	PG 64-22*	4% @ 70 GYR

### NOTES

THE UNIT WEIGHT USED TO CALCULATE ALL HMA SURFACE COURSE MIXTURES IS 112 LBS/SQYD/IN.  
\*WHEN RAP EXCEEDS 20%, THE NEW ASPHALT BINDER IN THE MIX SHALL BE PG 58-22



US 52 (TROY RD.)  
PROPOSED TYPICAL SECTION



**NOTE:**

1. ALL PAVEMENT MARKING SHALL BE THERMOPLASTIC UNLESS OTHERWISE NOTED. SEE DISTRICT DETAIL TC-13.
2. RAISED REFLECTIVE PAVEMENT MARKERS SHALL BE USED THROUGHOUT THE IMPROVEMENT LIMITS.

FILE NAME =  
 c:\projects\dl25684\ah...design...dgn

USER NAME = guillaumefp  
 PLOT SCALE = 50.0000' / IN.  
 PLOT DATE = 4/5/2008

DESIGNED -  
 DRAWN -  
 CHECKED -  
 DATE -

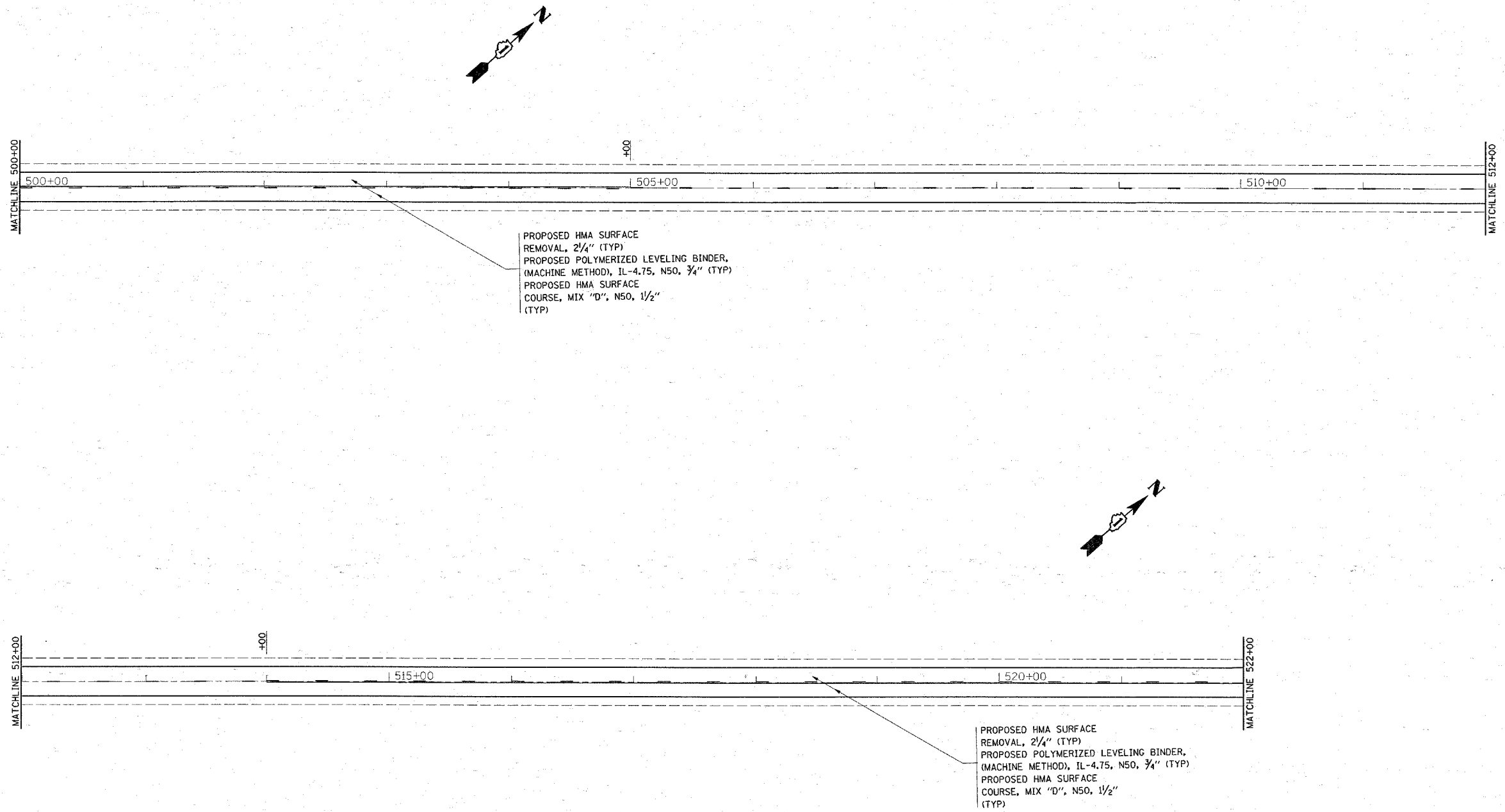
REVISED -  
 REVISED -  
 REVISED -  
 REVISED -

**STATE OF ILLINOIS  
 DEPARTMENT OF TRANSPORTATION**

**US 52 / TROY RD. (KENDALL CO. LINE TO RIVER RD.)  
 ROADWAY & PAVEMENT MARKING PLANS**

SCALE: 1"=50' SHEET NO. OF SHEETS STA. TO STA.

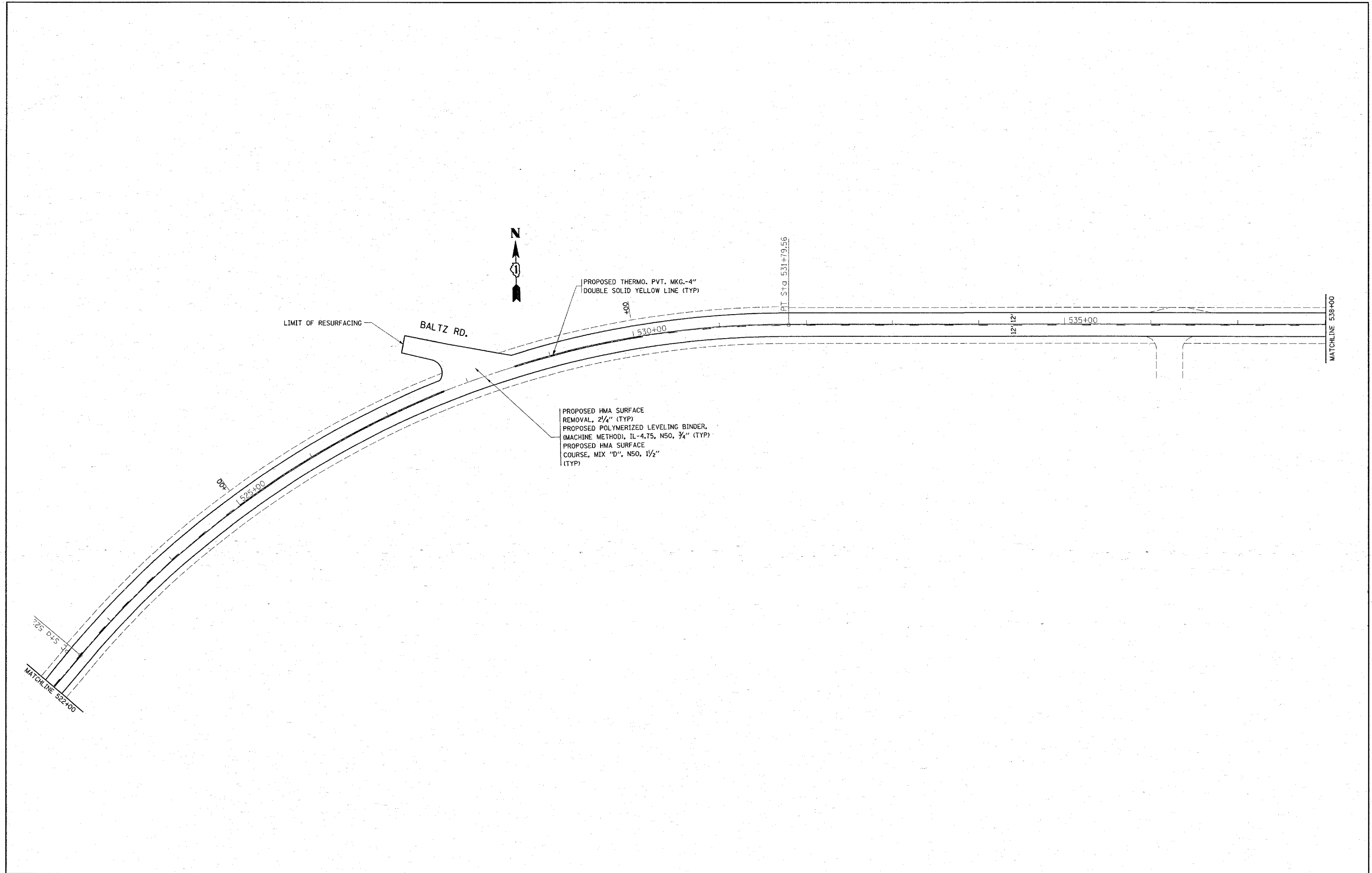
F.A.P. RTE.	SECTION	COUNTY	TOTAL SHEETS	SHEET NO.
607	130 RS-3	WILL	17	5
FED. ROAD DIST. NO. 1 (ILLINOIS) FED. AID PROJECT			CONTRACT NO. 62787	



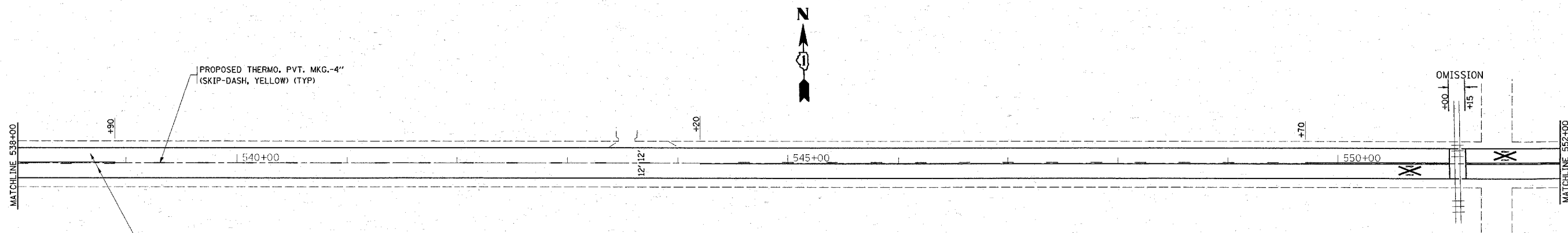
PROPOSED HMA SURFACE  
 REMOVAL, 2 1/4" (TYP)  
 PROPOSED POLYMERIZED LEVELING BINDER,  
 (MACHINE METHOD), IL-4.75, N50, 3/4" (TYP)  
 PROPOSED HMA SURFACE  
 COURSE, MIX "D", N50, 1 1/2"  
 (TYP)

PROPOSED HMA SURFACE  
 REMOVAL, 2 1/4" (TYP)  
 PROPOSED POLYMERIZED LEVELING BINDER,  
 (MACHINE METHOD), IL-4.75, N50, 3/4" (TYP)  
 PROPOSED HMA SURFACE  
 COURSE, MIX "D", N50, 1 1/2"  
 (TYP)

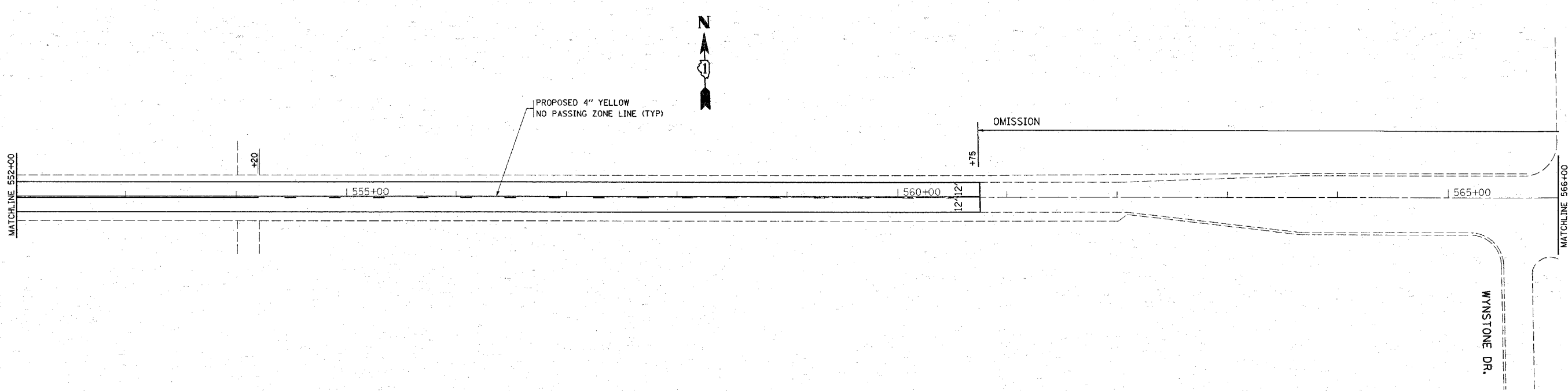
FILE NAME = c:\projects\dl25604\sh_design.aa.dgn	USER NAME = guilloumefp	DESIGNED -	REVISED -	<b>STATE OF ILLINOIS DEPARTMENT OF TRANSPORTATION</b>	<b>US 52 /TROY RD. (KENDALL CO. LINE TO RIVER RD.) ROADWAY &amp; PAVEMENT MARKING PLANS</b>			F.A.B. RTE.	SECTION	COUNTY	TOTAL SHEETS	SHEET NO.
	PLOT SCALE = 50,0000' / IN.	DRAWN -	REVISED -					607	130 RS-3	WILL	17	6
	PLOT DATE = 4/5/2008	CHECKED -	REVISED -					CONTRACT NO. 62787				
	DATE -	REVISED -		SCALE: 1"=50'	SHEET NO.	OF SHEETS	STA.	TO STA.	FED. ROAD DIST. NO. 1 ILLINOIS FED. AID PROJECT			



FILE NAME = c:\proj\jca\td125684\sh_design_00.dgn	USER NAME = guilleumefp	DESIGNED -	REVISED -	<b>STATE OF ILLINOIS DEPARTMENT OF TRANSPORTATION</b>	<b>US 52 / TROY RD. (KENDALL CO. LINE TO RIVER RD.) ROADWAY &amp; PAVEMENT MARKING PLANS</b>	F.A.P. RTE. 607	SECTION 130 RS-3	COUNTY WILL	TOTAL SHEETS 17	SHEET NO. 7	
	PLOT SCALE = 50.0000' / IN.	CHECKED -	REVISED -			SCALE: 1"=50'	SHEET NO. OF SHEETS STA. TO STA.	CONTRACT NO. 62787			
	PLOT DATE = 4/5/2008	DATE -	REVISED -			FED. ROAD DIST. NO. 1   ILLINOIS   FED. AID PROJECT					



PROPOSED HMA SURFACE  
 REMOVAL, 2 1/4" (TYP)  
 PROPOSED POLYMERIZED LEVELING BINDER,  
 (MACHINE METHOD), IL-4.75, N50, 3/4" (TYP)  
 PROPOSED HMA SURFACE  
 COURSE, MIX "D", N50, 1 1/2"  
 (TYP)

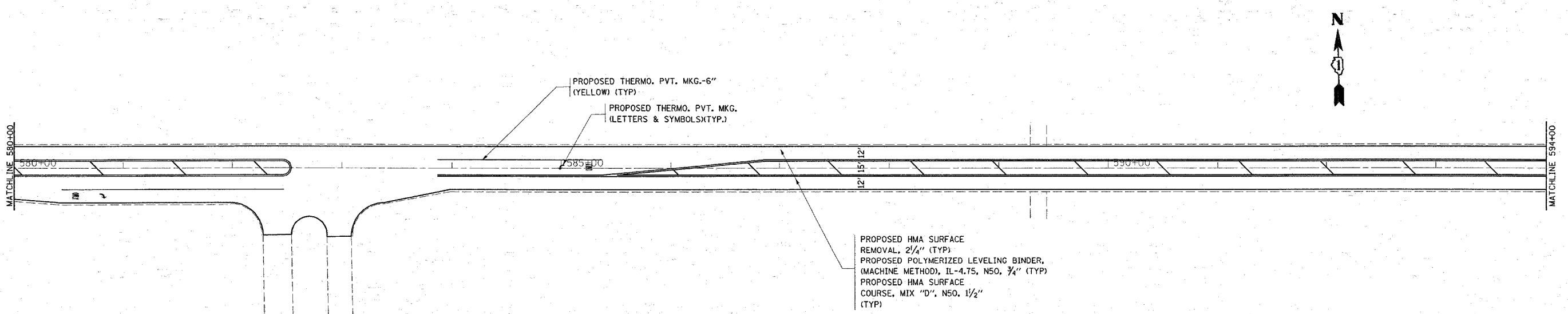
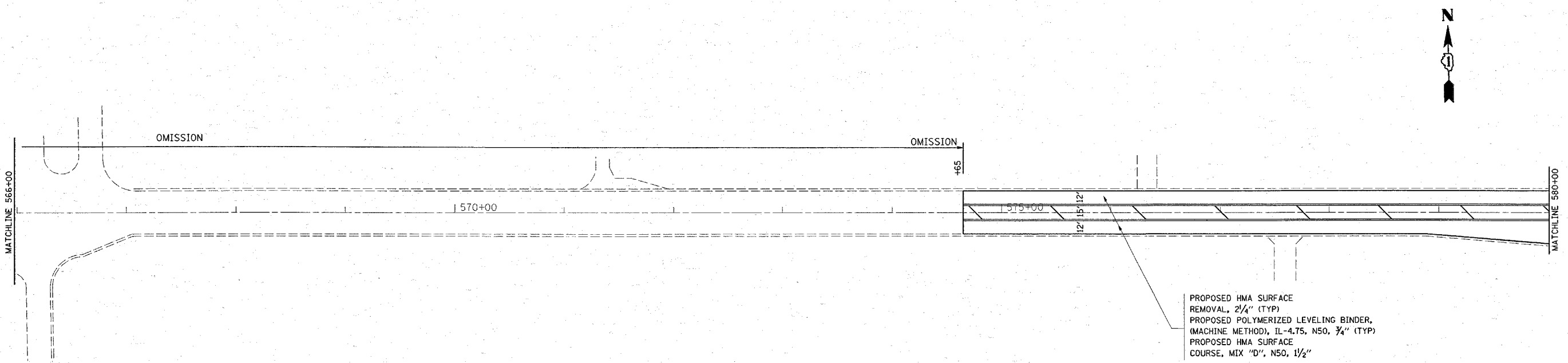


PROPOSED 4" YELLOW  
 NO PASSING ZONE LINE (TYP)

WYNSTONE DR.

FILE NAME = c:\projects\dl25604\sh_design_00.dgn	USER NAME = guillaumejp	DESIGNED -	REVISED -	<b>STATE OF ILLINOIS DEPARTMENT OF TRANSPORTATION</b>	<b>US 52 /TROY RD. (KENDALL CO. LINE TO RIVER RD.) ROADWAY &amp; PAVEMENT MARKING PLANS</b>	F.A.B. RTE. 607	SECTION 130 RS-3	COUNTY WILL	TOTAL SHEETS 17	SHEET NO. 8
	PLOT SCALE = 50.0000' / IN.	CHECKED -	REVISED -			CONTRACT NO. 62787				
	PLOT DATE = 4/5/2008	DATE -	REVISED -			FED. ROAD DIST. NO. 1 ILLINOIS FED. AID PROJECT				
					SCALE: 1"=50'	SHEET NO. OF SHEETS	STA. TO STA.			





FILE NAME = c:\projects\dl25604\sh_design_00.dgn	USER NAME = guilleumfp	DESIGNED -	REVISED -	<b>STATE OF ILLINOIS DEPARTMENT OF TRANSPORTATION</b>	<b>US 52 / TROY RD. (KENDALL CO. LINE TO RIVER RD.) ROADWAY &amp; PAVEMENT MARKING PLANS</b>			F.A.P. RTE. 607	SECTION 130 RS-3	COUNTY WILL	TOTAL SHEETS 17	SHEET NO. 9			
	PLOT SCALE = 50.0000' / IN.	CHECKED -	REVISED -					SCALE: 1"=50'			SHEET NO. OF SHEETS STA. TO STA.			CONTRACT NO. 62787	
	PLOT DATE = 4/5/2008	DATE -	REVISED -					FED. ROAD DIST. NO. 1   ILLINOIS FED. AID PROJECT							

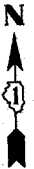
MATCHLINE 584+00

MATCHLINE 609+00

IMPROVEMENT ENDS  
STA. 600+47

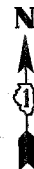
PROPOSED HMA SURFACE  
REMOVAL, 2 1/4" (TYP)  
PROPOSED POLYMERIZED LEVELING BINDER,  
(MACHINE METHOD), IL-4.75, N50, 3/4" (TYP)  
PROPOSED HMA SURFACE  
COURSE, MIX "D", N50, 1 1/2"  
(TYP)

RIVER RD.



MATCHLINE 609+00

MATCHLINE 624+00



EARL RD.

FILE NAME =  
c:\projects\dl25684\sh.design.dgn

USER NAME = gulloumefp  
PLOT SCALE = 50,0000' / IN.  
PLOT DATE = 4/5/2008

DESIGNED -  
DRAWN -  
CHECKED -  
DATE -

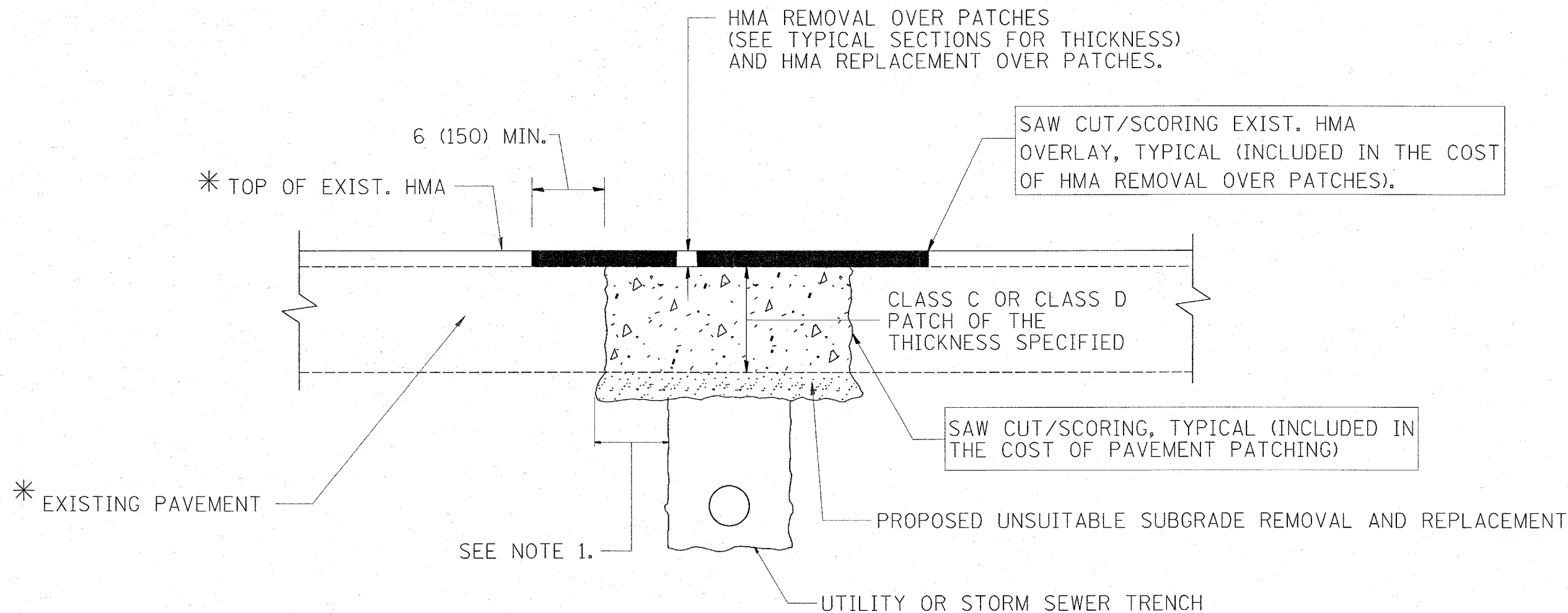
REVISED -  
REVISED -  
REVISED -  
REVISED -

**STATE OF ILLINOIS  
DEPARTMENT OF TRANSPORTATION**

**US 52 /TROY RD. (KENDALL CO. LINE TO RIVER RD.)  
ROADWAY & PAVEMENT MARKING PLANS**

SCALE: 1"=50' SHEET NO. OF SHEETS STA. TO STA.

F.A.P. RTE. 607	SECTION 130 RS-3	COUNTY WILL	TOTAL SHEETS 17	SHEET NO. 10
CONTRACT NO. 62787				
FED. ROAD DIST. NO. 1 ILLINOIS FED. AID PROJECT				



**NOTES:**

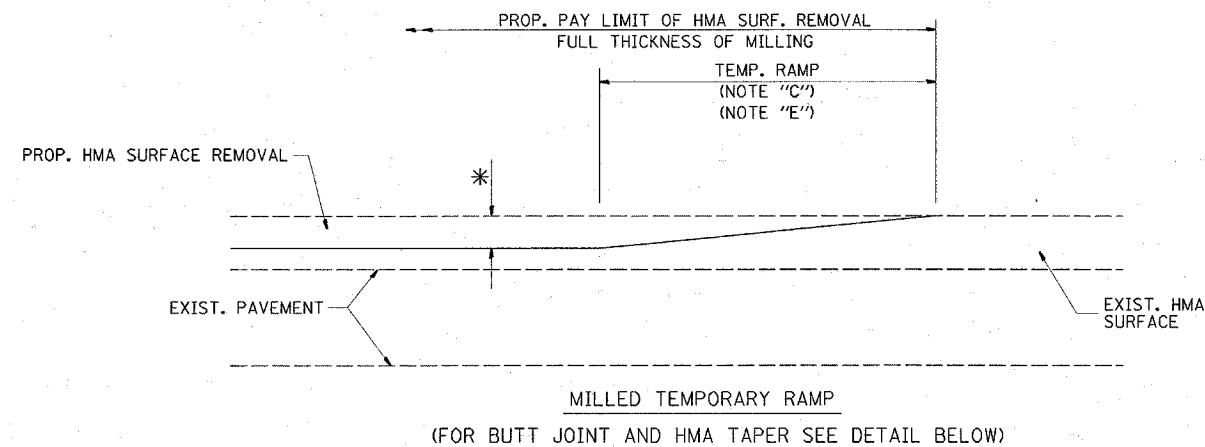
1. THE WIDTH OF THE FULL DEPTH PATCH OVER A TRENCH SHALL BE 12 (300) WIDER ON EACH SIDE OF THE TRENCH.
2. FOR METHOD OF MEASUREMENT AND BASIS OF PAYMENT, SEE RECURRING SPECIAL PROVISION "PATCHING WITH HOT-MIX ASPHALT OVERLAY REMOVAL".

**SEQUENCE OF CONSTRUCTION**

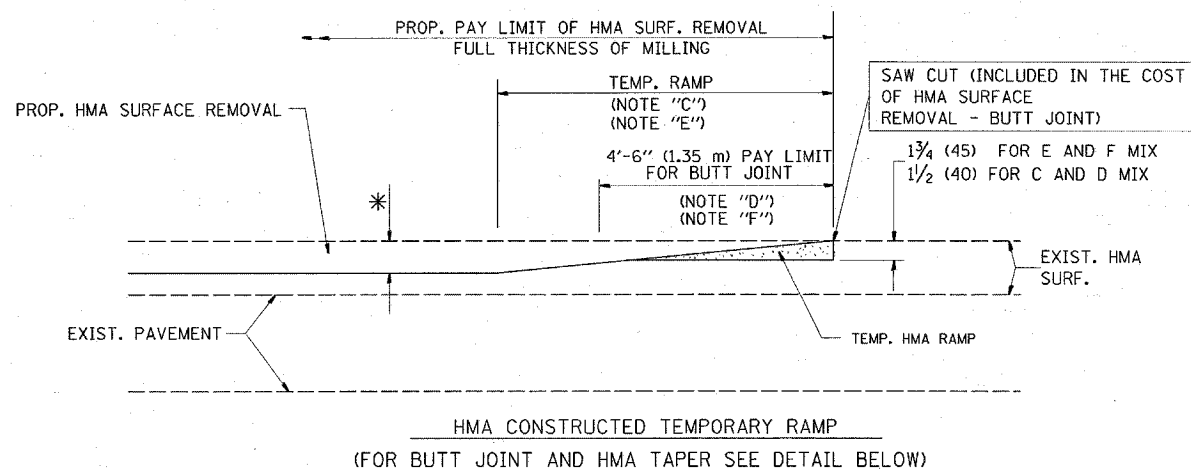
1. REMOVE THE EXISTING HMA MATERIAL OVER THE AREA TO BE PATCHED.
2. REMOVE AND REPLACE FULL DEPTH PATCHES
3. REPLACE HMA MATERIAL OVER THE AREA TO BE PATCHED.

ALL DIMENSIONS ARE IN INCHES (MILLIMETERS) UNLESS OTHERWISE SHOWN.

FILE NAME = W:\diststd\22x34\bd22.dgn	USER NAME = guillaumejp	DESIGNED - R. SHAH	REVISED - A. ABBAS 01-20-98	<b>STATE OF ILLINOIS DEPARTMENT OF TRANSPORTATION</b>	<b>PAVEMENT PATCHING FOR HMA SURFACED PAVEMENT</b>			F.A.P. RTE. 607	SECTION 130 R5-3	COUNTY Will	TOTAL SHEETS 17	SHEET NO. 11
	PLOT SCALE = 50,000 / IN.	DRAWN -	REVISED - A. ABBAS 04-27-98		SCALE: NONE	SHEET NO. 1 OF 1 SHEETS	STA.	TO STA.	BD400-04 (BD-22) CONTRACT NO. 62787			
	PLOT DATE = 4/1/2008	CHECKED -	REVISED - R. BORO 01-01-07		FED. ROAD DIST. NO. 1 (ILLINOIS) FED. AID PROJECT							
		DATE - 10-25-94	REVISED - R. BORO 09-04-07									

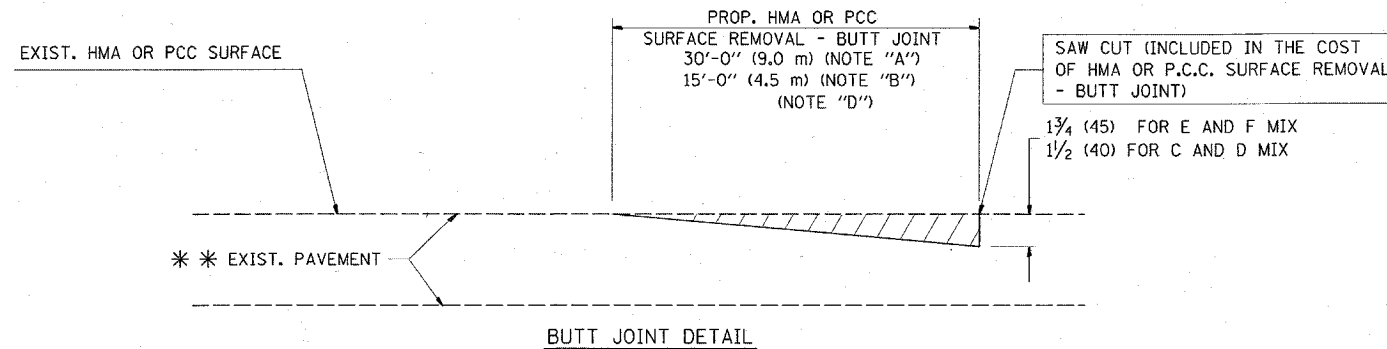


**OPTION 1**

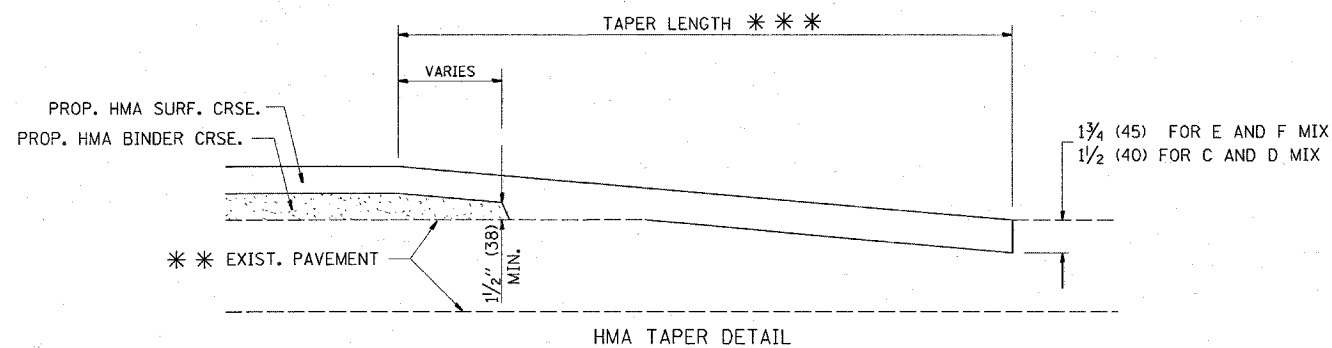


**OPTION 2**

**TYPICAL TEMPORARY RAMP**



**BUTT JOINT DETAIL**



**HMA TAPER DETAIL**

**TYPICAL BUTT JOINT AND HMA TAPER FOR RESURFACING ONLY**

\*\*\* PC CONCRETE, HMA OR HMA RESURFACED PAVEMENT.

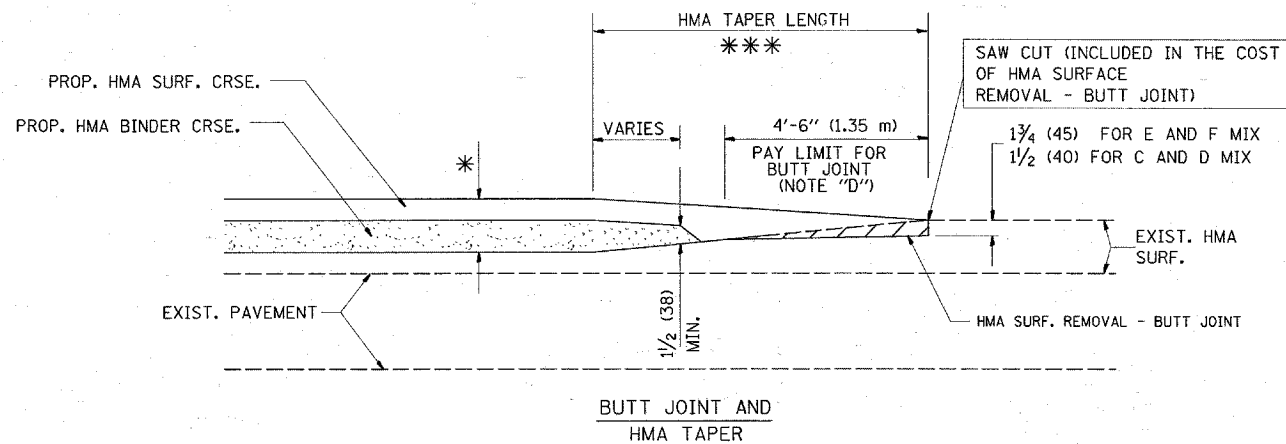
**NOTES**

- A: MAINLINE ROADWAYS AND MAJOR SIDE ROADS.
  - B: MINOR SIDE ROADS.
  - C: THE TEMP. RAMP SHALL BE CONSTRUCTED IMMEDIATELY UPON REMOVAL OF THE EXISTING HMA SURFACE.
  - D: THE BUTT JOINT SHALL BE CONSTRUCTED IMMEDIATELY PRIOR TO PLACING THE PROPOSED HMA COURSES.
  - E: TAPER THE TEMP. RAMP AT A RATE OF 3'-0" (900 mm) PER 1 INCH (25 mm) OF MILLING THICKNESS.
  - F: INSTALLATION AND REMOVAL OF THE 4'-6" (1.35 m) TEMP. RAMP IS INCLUDED IN COST OF HMA SURFACE REMOVAL - BUTT JOINT
  - G: SEE ARTICLE 406.08 AND 406.14 OF THE STANDARD SPECIFICATIONS FOR "HMA AND/OR PCC SURFACE REMOVAL, BUTT JOINT".
- \* SEE TYPICAL SECTIONS FOR MILLING THICKNESS.
- \*\*\* 20'-0" (6.1 m) PER 1 (25) RESURFACING (NOTE "A")  
10'-0" (3.0 m) PER 1 (25) RESURFACING (NOTE "B")

**BASIS OF PAYMENT:**

THE BUTT JOINT WILL BE PAID FOR AT THE CONTRACT UNIT PRICE PER SQUARE YARD (SQUARE METER) FOR "HOT-MIX ASPHALT SURFACE REMOVAL - BUTT JOINT" OR FOR "PORTLAND CEMENT CONCRETE SURFACE REMOVAL - BUTT JOINT".

ALL DIMENSIONS ARE IN INCHES (MILLIMETERS) UNLESS OTHERWISE SHOWN.



**TYPICAL BUTT JOINT AND HMA TAPER FOR MILLING AND RESURFACING**

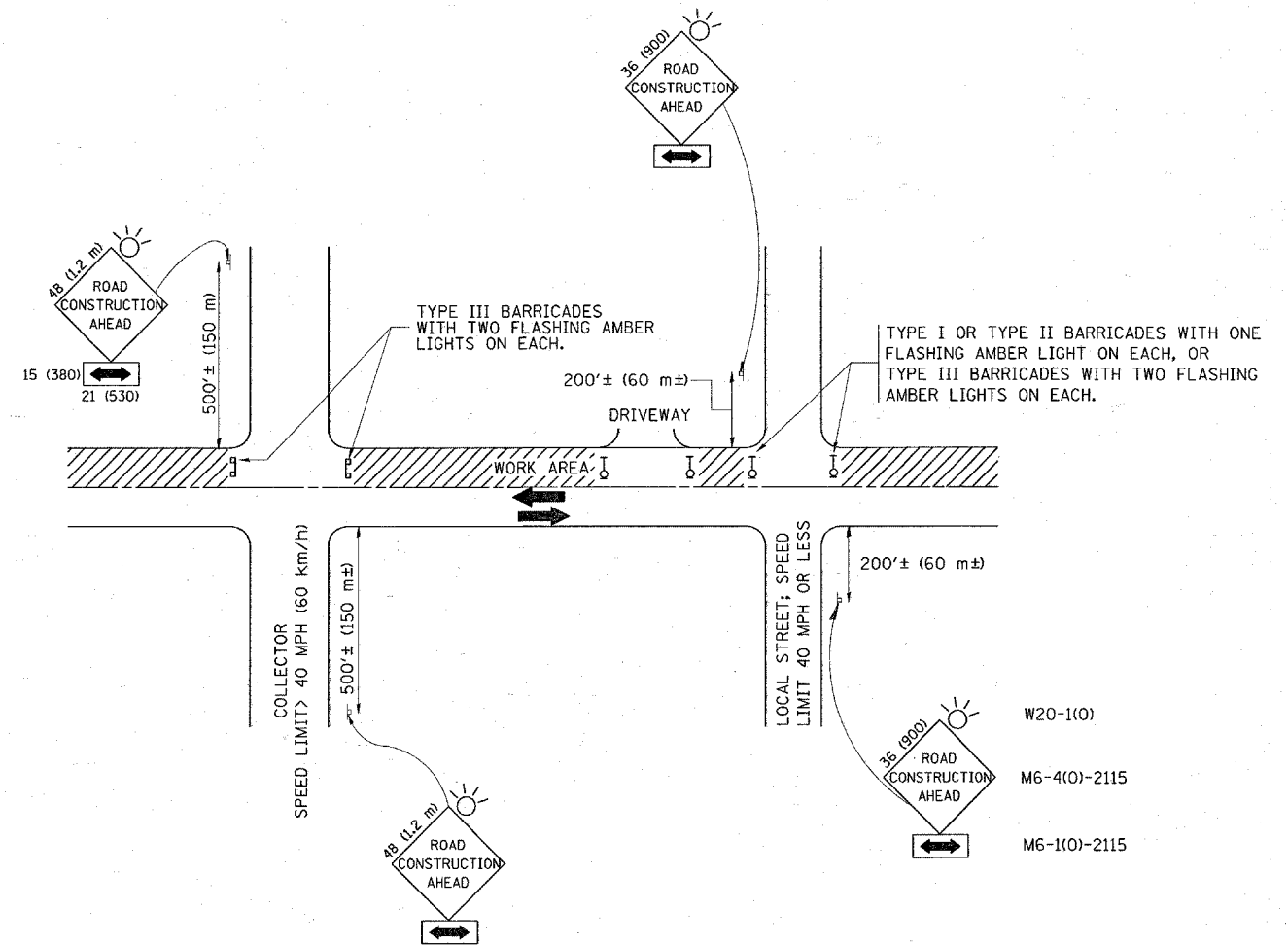
FILE NAME =	USER NAME = gulloumefp	DESIGNED - M. DE YONG	REVISED - R. SHAH 10-25-94
W:\diststd\22x34\bd32.dgn		DRAWN -	REVISED - A. ABBAS 03-21-97
	PLOT SCALE = 50.0000 "/td> <td>CHECKED -</td> <td>REVISED - M. GOMEZ 04-06-01</td>	CHECKED -	REVISED - M. GOMEZ 04-06-01
	PLOT DATE = 4/1/2003	DATE - 06-13-90	REVISED - R. BORO 01-01-07

**STATE OF ILLINOIS  
DEPARTMENT OF TRANSPORTATION**

**BUTT JOINT AND  
HMA TAPER DETAILS**

SCALE: NONE SHEET NO. 1 OF 1 SHEETS STA. TO STA.

F.A.P. RTE.	SECTION	COUNTY	TOTAL SHEETS	SHEET NO.
607	130 R5-3	Will	17	12
BD400-05 BD32			CONTRACT NO. 62787	
FED. ROAD DIST. NO. 1 ILLINOIS FED. AID PROJECT				



TRAFFIC CONTROL AND PROTECTION FOR SIDE ROADS, INTERSECTIONS, AND DRIVEWAYS

NOTES:

- A. FOR NO LANE RESTRICTION ON THE SIDE ROAD OR DRIVEWAYS
  1. SIDE ROAD WITH A SPEED LIMIT OF 40 MPH (60 km/h) OR LESS AS SHOWN ON THE DRAWING AND AS DIRECTED BY THE ENGINEER:
    - a) ONE ROAD CONSTRUCTION AHEAD SIGN 36 x 36 (900x900) WITH A FLASHER AND FLAG MOUNTED ON IT APPROXIMATELY 200' (60 m) IN ADVANCE OF THE MAIN ROUTE.
    - b) THE CLOSED PORTION OF THE MAIN ROUTE SHALL BE PROTECTED BY BLOCKING WITH TYPE I, TYPE II OR TYPE III BARRICADES, 1/3 OF THE CROSS SECTION OF THE CLOSED PORTION.
  2. SIDE ROAD WITH A SPEED LIMIT GREATER THAN 40 MPH (60 km/h) AS SHOWN ON THE DRAWING AND AS DIRECTED BY THE ENGINEER:
    - a) ONE ROAD CONSTRUCTION AHEAD SIGN 48 x 48 (1.2 m x 1.2 m) WITH A FLASHER MOUNTED ON IT APPROXIMATELY 500' (150 m) IN ADVANCE OF THE MAIN ROUTE.
    - b) THE CLOSED PORTION OF THE MAIN ROUTE SHALL BE PROTECTED BY BLOCKING WITH TYPE III BARRICADES, 1/2 OF THE CROSS SECTION OF THE CLOSED PORTION.
  3. WHEN THE SIDE ROAD LIES BETWEEN THE BEGINNING OF THE MAINLINE SIGNING AND THE WORK ZONE, A SINGLE HEADED ARROW (M6-1) SHALL BE USED IN LIEU OF THE DOUBLE HEADED ARROW (M6-4).
- B. FOR A LANE CLOSURE ON A SIDE ROAD OR DRIVEWAY:
 

USE APPLICABLE PORTIONS OF THE TYPICAL APPLICATION OF TRAFFIC CONTROL DEVICES (STD. 701501, STD. 701606 OR THE APPROPRIATE STANDARD). THE SPACING OF SIGNS AND BARRICADES SHALL BE ADJUSTED FOR FIELD CONDITIONS AS DIRECTED BY THE ENGINEER. THE DIRECTIONAL ARROW SHALL BE COVERED OR REMOVED WHEN NO LONGER CONSISTENT WITH THE SIDE ROAD LANE CLOSURE.
- C. ADVANCE WARNING SIGNS ARE TO BE OMITTED ON DRIVEWAY UNLESS OTHERWISE NOTED.
- D. THE TRAFFIC CONTROL AND PROTECTION FOR SIDE ROADS, INTERSECTIONS, AND DRIVEWAYS SHALL BE INCIDENTAL TO THE COST OF SPECIFIED TRAFFIC CONTROL STANDARDS OR ITEMS.

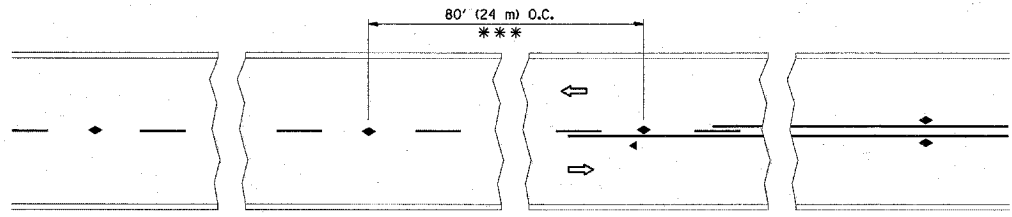
All dimensions are in millimeters (Inches) unless otherwise shown.

FILE NAME = W:\diststd\22x34\td10.dgn	USER NAME = guillaumefp	DESIGNED - LHA	REVISED - J. OBERLE 10-18-95
		DRAWN -	REVISED - A. HOUSEH 03-06-96
	PLOT SCALE = 50,000' / IN.	CHECKED -	REVISED - A. HOUSEH 10-15-96
	PLOT DATE = 4/1/2008	DATE - 06-89	REVISED - T. RAMMACHER 01-06-00

STATE OF ILLINOIS  
DEPARTMENT OF TRANSPORTATION

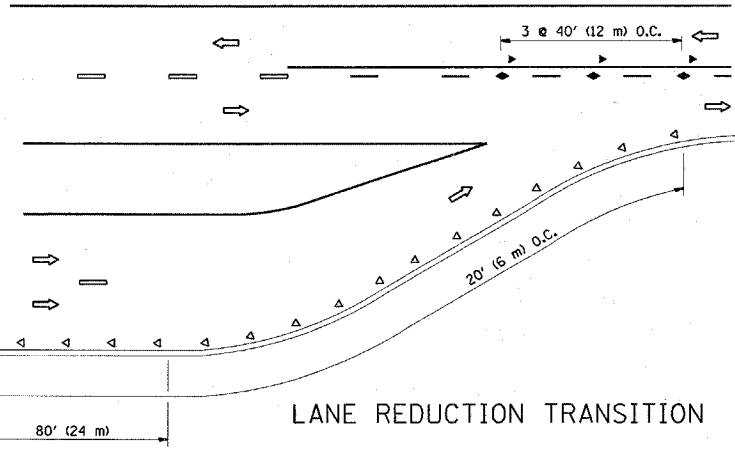
TRAFFIC CONTROL AND PROTECTION FOR SIDE ROADS, INTERSECTIONS, AND DRIVEWAYS			
SCALE: NONE	SHEET NO. 1 OF 1 SHEETS	STA.	TO STA.

F.A.P. RTE.	SECTION	COUNTY	TOTAL SHEETS	SHEET NO.
607	130 RS-3	Will	17	13
TC-10			CONTRACT NO. 62787	
FED. ROAD DIST. NO. 1 ILLINOIS FED. AID PROJECT				

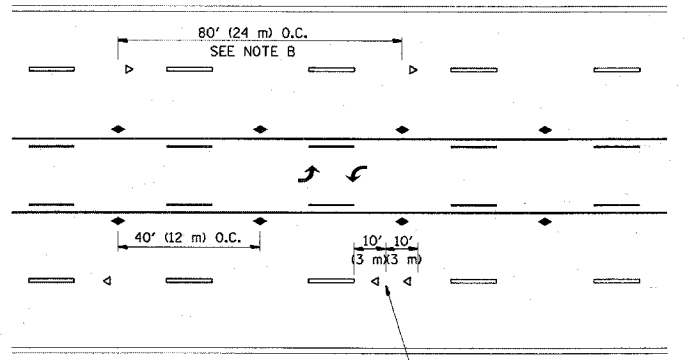


\*\*\* REDUCE TO 40' (12 m) O.C. ON CURVES WITH POSTED OR ADVISORY SPEED 45 M.P.H. (70 km/h) OR LESS.

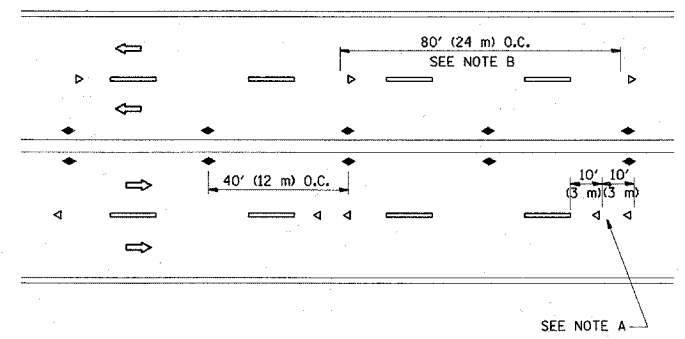
TWO-LANE/TWO-WAY



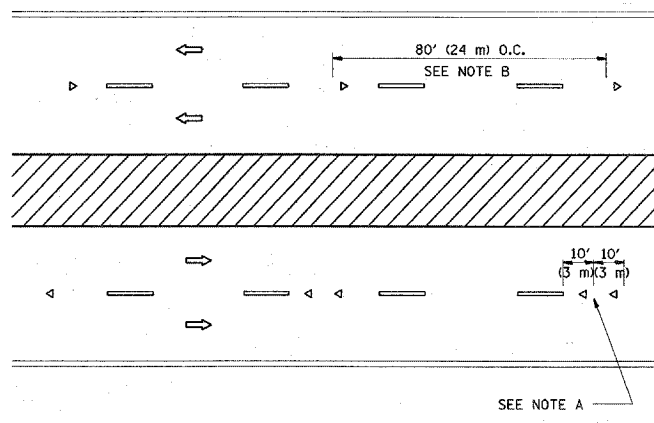
LANE REDUCTION TRANSITION



TWO-WAY LEFT TURN



MULTI-LANE/UNDIVIDED



MULTI-LANE/DIVIDED

GENERAL NOTES

1. MARKERS USED WITH DASHED LINES SHALL BE CENTERED IN THE GAP BETWEEN SEGMENTS.
2. MARKERS USED ADJACENT TO SOLID LINES SHALL BE OFFSET 2 TO 3 (50 TO 75) TOWARD TRAFFIC AS SHOWN.
3. MARKERS THROUGH TANGENTS LESS THAN 500' (150 m) IN LENGTH BETWEEN CURVES SHALL BE INSTALLED AT THE LESSER OF THE TWO CURVE SPACINGS.

SYMBOLS

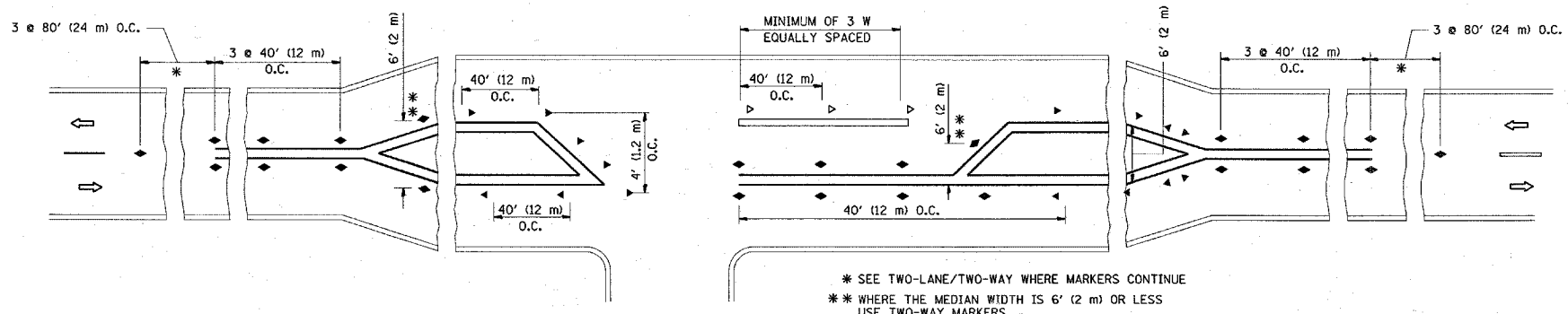
- YELLOW STRIPE
- WHITE STRIPE
- ◀ ONE-WAY AMBER MARKER
- ◀ ONE-WAY CRYSTAL MARKER (W/O)
- ◆ TWO-WAY AMBER MARKER

LANE MARKER NOTES

- A. USE DOUBLE LANE LINE MARKERS SPACED AS SHOWN.
- B. REDUCE TO 40' (12 m) O.C. ON CURVES WHERE ADVISORY SPEEDS ARE 10 M.P.H (20 km/h) LOWER THAN POSTED SPEEDS.

DESIGN NOTES

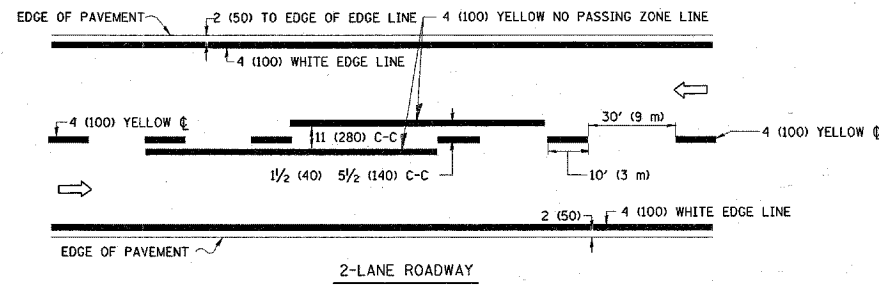
1. DOUBLE LANE LINE MARKERS SHALL BE USED UNLESS SPECIFIED OTHERWISE.
2. EXCEPT AS SHOWN ON THE LANE REDUCTION TRANSITION AND FREEWAY EXIT RAMP DETAIL, MARKERS ARE NOT TO BE SPECIFIED ON RIGHT EDGE LINES.
3. THE EXACT MARKER LIMITS, SPACING, AND COLOR SHOULD BE INCLUDED IN THE PLANS.
4. MARKERS SHOULD NOT BE USED ALONGSIDE CURBS EXCEPT FOR EXTREMELY SHORT SECTIONS OF CURBS WHERE NOT MORE THAN TWO MARKERS WOULD BE INVOLVED.



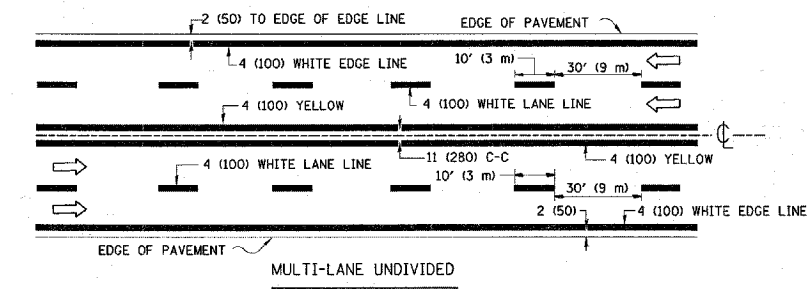
LEFT TURN

All dimensions are in inches (millimeters) unless otherwise shown.

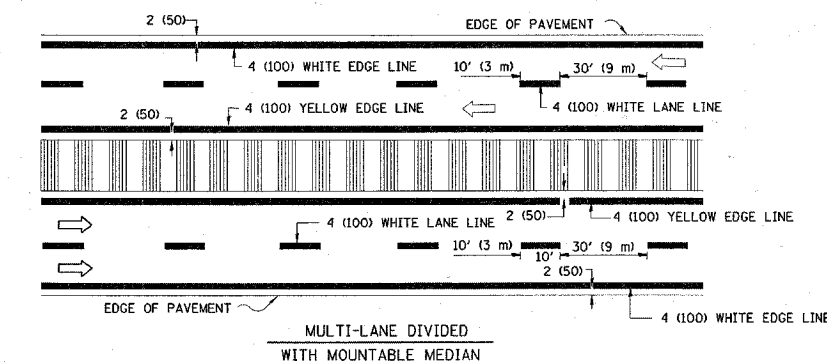
FILE NAME = W:\dists\d22x34\td11.dgn	USER NAME = guiloumefp	DESIGNED -	REVISED - T. RAMMACHER 09-19-94	<b>STATE OF ILLINOIS DEPARTMENT OF TRANSPORTATION</b>	<b>TYPICAL APPLICATIONS RAISED REFLECTIVE PAVEMENT MARKERS (SNOW-PLOW RESISTANT)</b>			F.A.P. RTE. 607	SECTION 130 B-3	COUNTY Will	TOTAL SHEETS 17	SHEET NO. 14
	PLOT SCALE = 50,000' / IN.	DRAWN -	REVISED - T. RAMMACHER 03-12-99		SCALE: NONE	SHEET NO. 1 OF 1 SHEETS	STA.	TO STA.	CONTRACT NO. 62787			
	PLOT DATE = 4/1/2008	CHECKED -	REVISED - T. RAMMACHER 01-06-00		FED. ROAD DIST. NO. 1 ILLINOIS FED. AID PROJECT							
		DATE -	REVISED -									



2-LANE ROADWAY



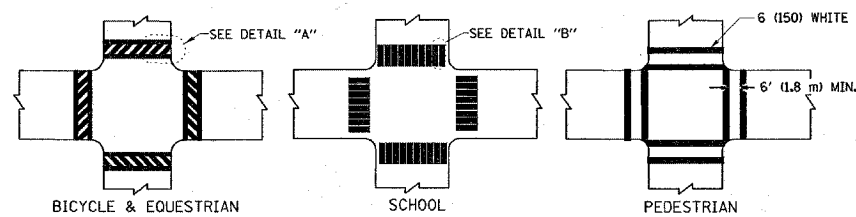
MULTI-LANE UNDIVIDED



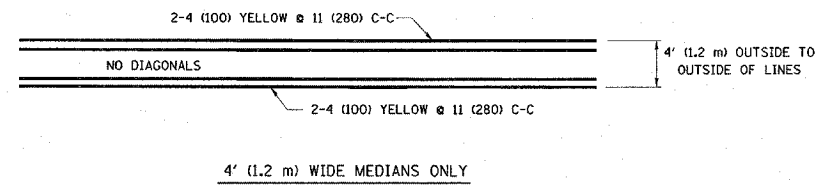
MULTI-LANE DIVIDED WITH MOUNTABLE MEDIAN

NOTE: MEDIANS WITH BARRIER CURB DO NOT REQUIRE AN EDGE LINE.

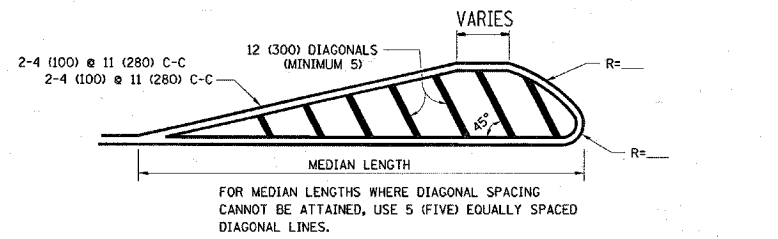
TYPICAL LANE AND EDGE LINE MARKING



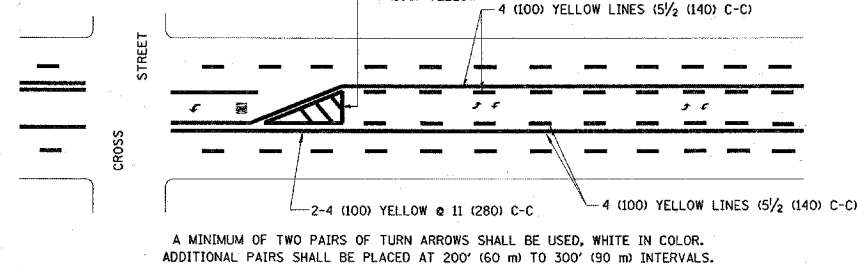
TYPICAL CROSSWALK MARKING



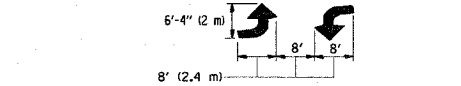
4' (1.2 m) WIDE MEDIANS ONLY



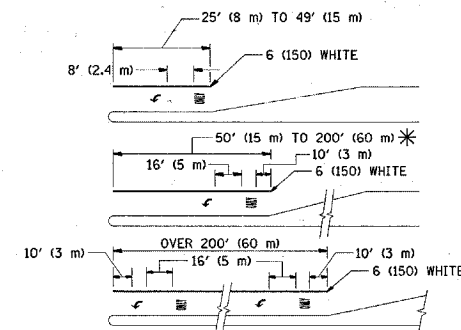
MEDIANS OVER 4' (1.2 m) WIDE



TYPICAL PAINTED MEDIAN MARKING



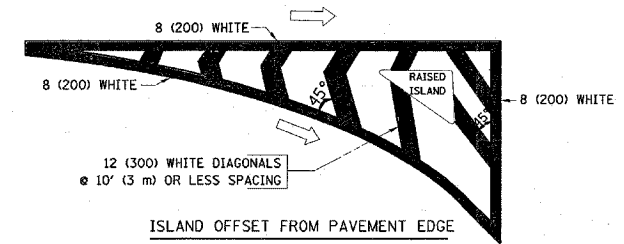
MEDIAN WITH TWO-WAY LEFT TURN LANE



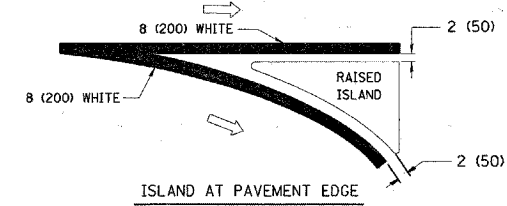
TYPICAL LEFT (OR RIGHT) TURN LANE

FULL SIZE LETTERS 8' (2.4 m) AND ARROWS SHALL BE USED.  
 AREA = 15.6 SQ. FT. (1.5 m<sup>2</sup>) ONLY AREA = 20.8 SQ. FT. (1.9 m<sup>2</sup>)  
 \* TURN LANES IN EXCESS OF 400' (120 m) IN LENGTH MAY HAVE AN ADDITIONAL SET OF ARROW - "ONLY" INSTALLED MIDWAY BETWEEN THE OTHER TWO SETS OF ARROW - "ONLY".

TYPICAL TURN LANE MARKING



ISLAND OFFSET FROM PAVEMENT EDGE



ISLAND AT PAVEMENT EDGE

TYPICAL ISLAND MARKING

TYPE OF MARKING	WIDTH OF LINE	PATTERN	COLOR	SPACING / REMARKS
CENTERLINE ON 2 LANE PAVEMENT	4 (100)	SKIP-DASH	YELLOW	10' (3 m) LINE WITH 30' (9 m) SPACE
CENTERLINE ON MULTI-LANE UNDIVIDED PAVEMENT	2 @ 4 (100)	SOLID	YELLOW	11 (280) C-C
NO PASSING ZONE LINES FOR ONE DIRECTION FOR BOTH DIRECTIONS	4 (100) 2 @ 4 (100)	SOLID SOLID	YELLOW YELLOW	5 1/2 (140) C-C FROM SKIP-DASH CENTERLINE 11 (280) C-C OMIT SKIP-DASH CENTERLINE BETWEEN
LANE LINES	4 (100) 5 (125) ON FREEWAYS	SKIP-DASH SKIP-DASH	WHITE WHITE	10' (3 m) LINE WITH 30' (9 m) SPACE
DOTTED LINES (EXTENSIONS OF CENTER, LANE OR TURN LANE MARKINGS)	SAME AS LINE BEING EXTENDED	SKIP-DASH	SAME AS LINE BEING EXTENDED	2' (600) LINE WITH 6' (1.8 m) SPACE
EDGE LINES	4 (100)	SOLID	YELLOW-LEFT WHITE-RIGHT	OUTLINE MOUNTABLE MEDIANS IN YELLOW; EDGE LINES ARE NOT USED NEXT TO BARRIER CURB
TURN LANE MARKINGS	6 (150) LINE; FULL SIZE LETTERS & SYMBOLS (8' (2.4m))	SOLID	WHITE	SEE TYPICAL TURN LANE MARKING DETAIL
TWO WAY LEFT TURN MARKING	2 @ 4 (100) EACH DIRECTION	SKIP-DASH AND SOLID	YELLOW	10' (3 m) LINE WITH 30' (9 m) SPACE FOR SKIP-DASH; 5 1/2 (140) C-C BETWEEN SOLID LINE AND SKIP-DASH LINE
	8' (2.4m) LEFT ARROW	IN PAIRS	WHITE	SEE TYPICAL TWO-WAY LEFT TURN MARKING DETAIL
CROSSWALK LINES (PEDESTRIAN) A. DIAGONALS (BIKE & EQUESTRIAN) B. LONGITUDINAL BARS (SCHOOL)	2 @ 6 (150) 12 (300) @ 45° 12 (300) @ 90°	SOLID SOLID SOLID	WHITE WHITE WHITE	NOT LESS THAN 6' (1.8 m) APART 2' (600) APART 2' (600) APART SEE TYPICAL CROSSWALK MARKING DETAILS.
STOP LINES	24 (600)	SOLID	WHITE	PLACE 4' (1.2 m) IN ADVANCE OF AND PARALLEL TO CROSSWALK, IF PRESENT. OTHERWISE, PLACE AT DESIRED STOPPING POINT, PARALLEL TO CROSSROAD CENTERLINE, WHERE POSSIBLE
PAINTED MEDIANS	2 @ 4 (100) WITH 12 (300) DIAGONALS @ 45° NO DIAGONALS USED FOR 4' (1.2 m) WIDE MEDIANS	SOLID	YELLOW; TWO WAY TRAFFIC WHITE; ONE WAY TRAFFIC.	11 (280) C-C FOR THE DOUBLE LINE SEE TYPICAL PAINTED MEDIAN MARKING.
GORE MARKING AND CHANNELIZING LINES	8 (200) WITH 12 (300) DIAGONALS @ 45°	SOLID	WHITE	DIAGONALS: 15' (4.5 m) C-C (LESS THAN 30MPH (50 km/h)) 20' (6 m) C-C 30MPH (50 km/h) TO 45MPH (70 km/h) 30' (9 m) C-C (OVER 45MPH (70 km/h))
RAILROAD CROSSING	24 (600) TRANSVERSE LINES; "RR" IS 6' (1.8 m) LETTERS; 16 (400) LINE FOR "X"	SOLID	WHITE	SEE STATE STANDARD 780001 AREA OF: "R"=3.6 SQ. FT. (0.33 m <sup>2</sup> ) EACH "X"=54.0 SQ. FT. (5.0 m <sup>2</sup> )
SHOULDER DIAGONALS	12 (300) @ 45°	SOLID	WHITE - RIGHT YELLOW - LEFT	50' (15 m) C-C (LESS THAN 30MPH (50 km/h)) 75' (25 m) C-C (30 MPH (50 km/h) TO 45MPH (70 km/h)) 150' (45 m) C-C (OVER 45MPH (70 km/h))

FOR FURTHER DETAILS ON PAVEMENT MARKING REFER TO STANDARD SPECIFICATIONS FOR ROAD AND BRIDGE CONSTRUCTION AND STATE STANDARD 780001.

All dimensions are in inches (millimeters) unless otherwise shown.

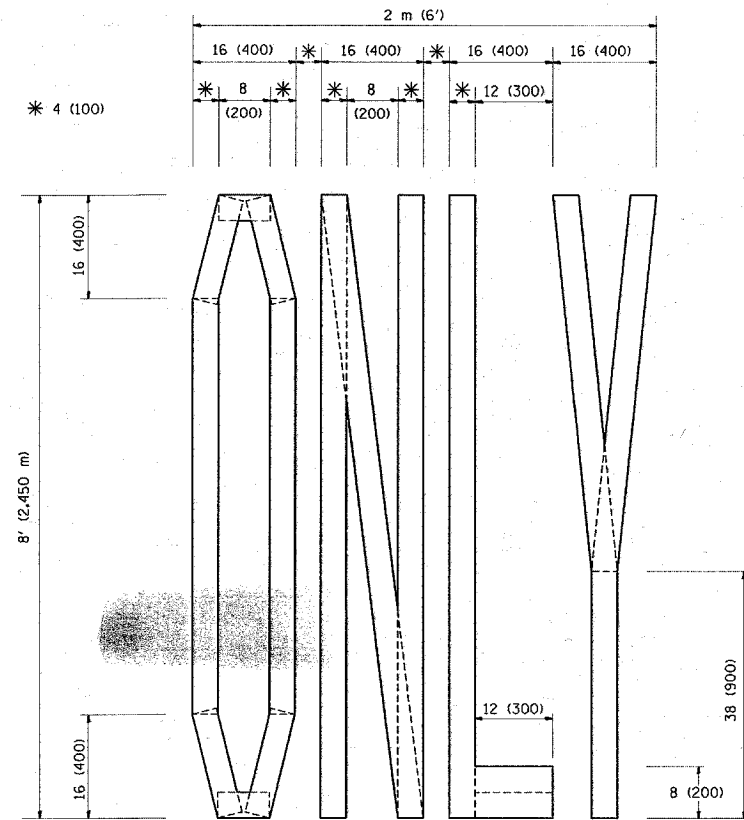
FILE NAME = W:\diststd\22x34\tdc13.dgn	USER NAME = guillaumejp	DESIGNED - EVERS	REVISED - T. RAMMACHER 10-27-94
		DRAWN -	REVISED - A. HOUSEH 10-09-96
	PLOT SCALE = 50,000' / IN.	CHECKED -	REVISED - A. HOUSEH 10-17-96
	PLOT DATE = 4/1/2008	DATE - 03-19-90	REVISED - T. RAMMACHER 01-06-00

STATE OF ILLINOIS  
DEPARTMENT OF TRANSPORTATION

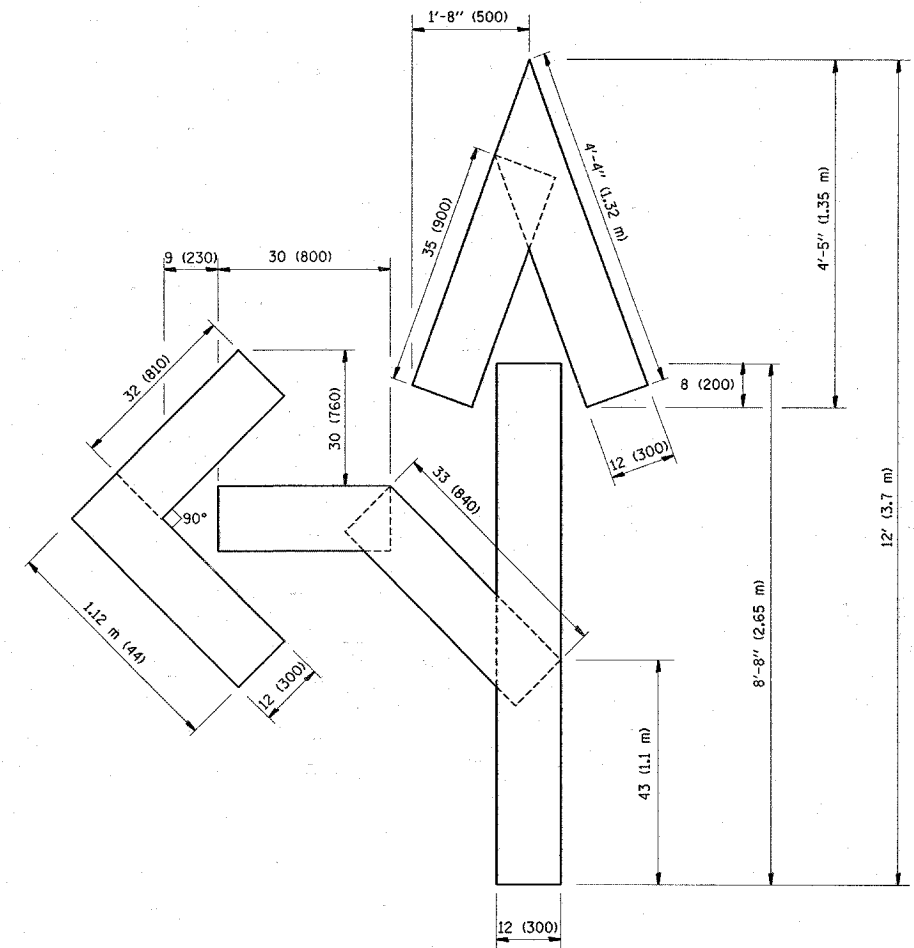
DISTRICT ONE  
TYPICAL PAVEMENT MARKINGS

SCALE: NONE SHEET NO. 1 OF 1 SHEETS STA. TO STA.

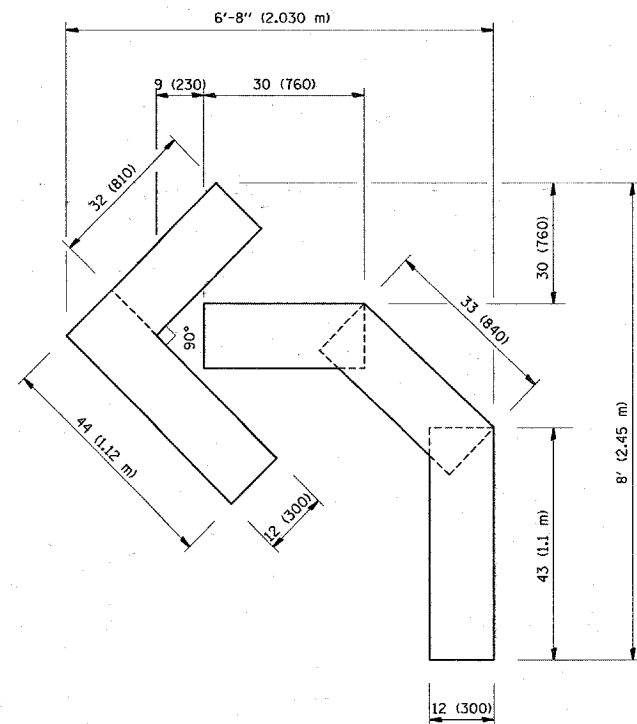
F.A.P. RTE. 607	SECTION 150 RS-3	COUNTY will	TOTAL SHEETS 17	SHEET NO. 15
TC-13			CONTRACT NO. 62787	
FED. ROAD DIST. NO. 1 ILLINOIS FED. AID PROJECT				



QUANTITY  
 4 (100) LINE = 64.1 ft. (19.7 m)  
 21.1 sq. ft. (1.97 sq. m)



QUANTITY  
 4 (100) LINE = 82.5 ft. (25.3 m)  
 27.5 sq. ft. (2.53 sq. m)



QUANTITY  
 4 (100) LINE = 45.5 ft. (13.9 m)  
 15.2 sq. ft. (1.39 sq. m)

All dimensions are in Inches (millimeters) unless otherwise shown.

FILE NAME =	USER NAME = guillaumejp	DESIGNED -	REVISED -T. RAMMACHER 06-05-96
W:\distatd\22x34\tol16.dgn		DRAWN -	REVISED -T. RAMMACHER 11-04-97
		CHECKED -	REVISED -T. RAMMACHER 03-02-98
		DATE - 09-18-94	REVISED -E. GOMEZ 08-28-00

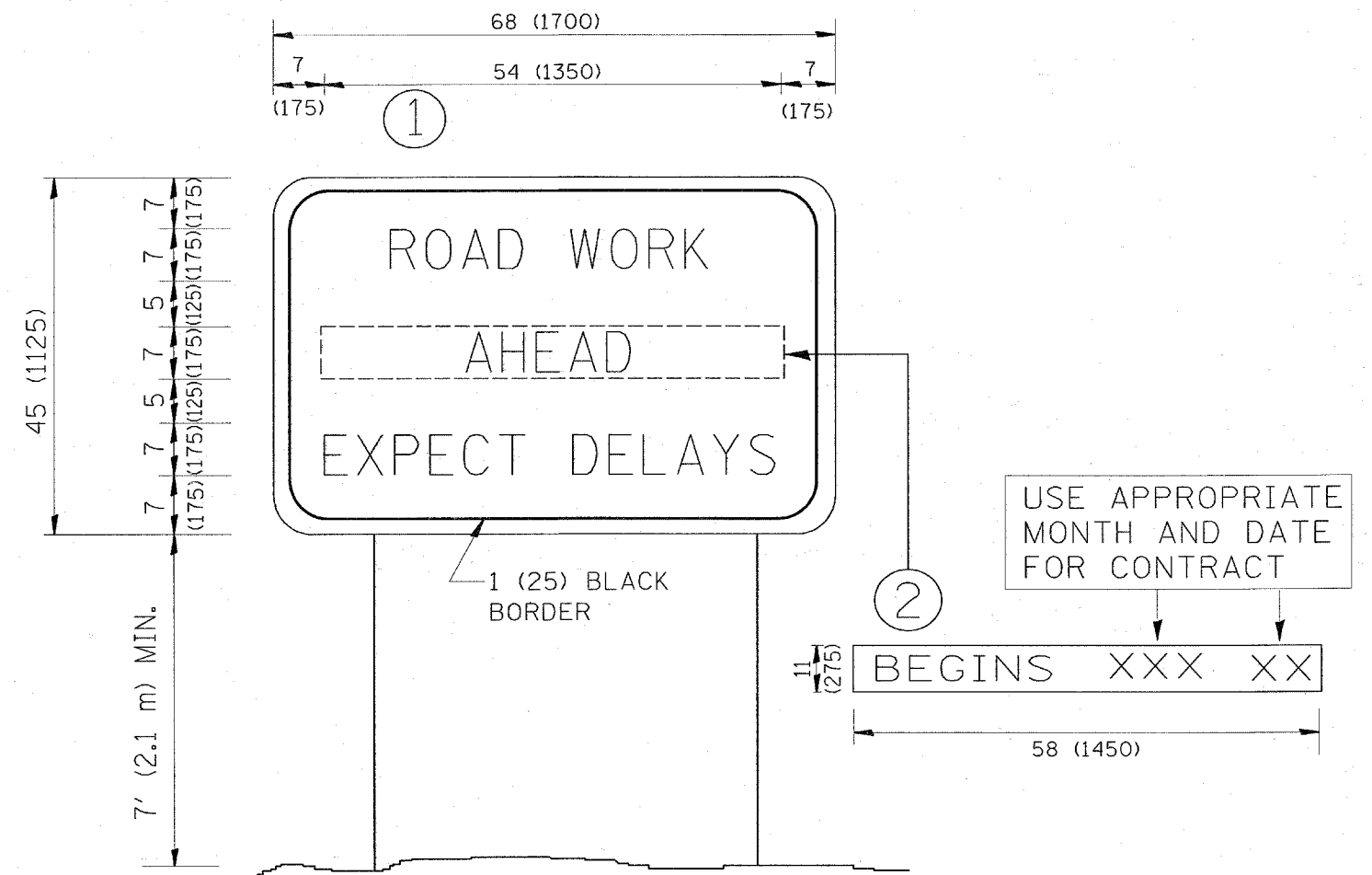
STATE OF ILLINOIS  
 DEPARTMENT OF TRANSPORTATION

PAVEMENT MARKING LETTERS AND SYMBOLS  
 FOR TRAFFIC STAGING

SCALE: NONE SHEET NO. 1 OF 1 SHEETS STA. TO STA.

F.A.P. RTE.	SECTION	COUNTY	TOTAL SHEETS	SHEET NO.
607	130 RS-3	Will	17	16
TC-16			CONTRACT NO. 62787	
FED. ROAD DIST. NO. 1 ILLINOIS FED. AID PROJECT				





**NOTES:**

1. USE BLACK LETTERING ON ORANGE BACKGROUND.
2. ERECT SIGNS IN ADVANCE OF THE LOCATION FOR THE "ROAD CONSTRUCTION AHEAD" SIGN AT LOCATIONS AS DIRECTED BY THE ENGINEER.
3. ERECT SIGN ① WITH INSTALLED PANEL ② ONE WEEK PRIOR TO THE START OF CONSTRUCTION.
4. REMOVE PANEL ② SOON AFTER THE START OF CONSTRUCTION.
5. SEE SPECIAL PROVISION FOR "TEMPORARY INFORMATION SIGNING" FOR ADDITIONAL INFORMATION.
6. ONE SIGN ASSEMBLY EQUALS 25.70 SQ. FT. (2.3 SQ. M.)
7. SHALL BE PAID FOR AS TEMPORARY INFORMATION SIGNING.

ALL DIMENSIONS ARE IN INCHES (MILLIMETERS) UNLESS OTHERWISE SHOWN.

FILE NAME = W:\dtsstd\22x34\tc22.dgn	USER NAME = guillaumejp	DESIGNED -	REVISED - R. MIRS 09-15-97
		DRAWN -	REVISED - R. MIRS 12-11-97
	PLOT SCALE = 50,000 "/ IN.	CHECKED -	REVISED - T. RAMMACHER 02-02-99
	PLOT DATE = 4/1/2008	DATE -	REVISED - C. JUCIUS 01-31-07

**STATE OF ILLINOIS  
DEPARTMENT OF TRANSPORTATION**

**ARTERIAL ROAD  
INFORMATION SIGN**

SCALE: NONE SHEET NO. 1 OF 1 SHEETS STA. TO STA.

F.A.P. RTE.	SECTION	COUNTY	TOTAL SHEETS	SHEET NO.
607	130 R5-3	Will	17	17
TC-22			CONTRACT NO. 62787	
FED. ROAD DIST. NO. 1 ILLINOIS FED. AID PROJECT				