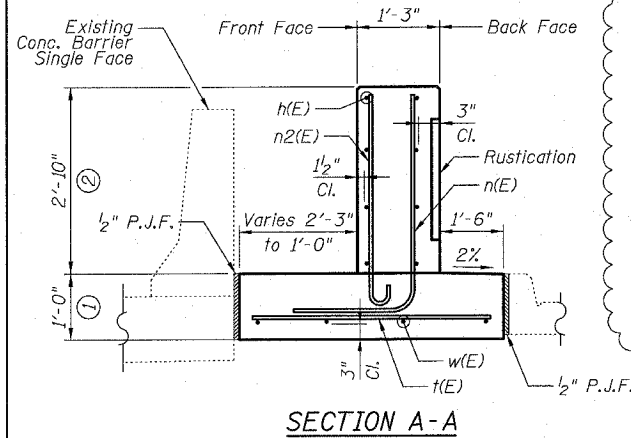
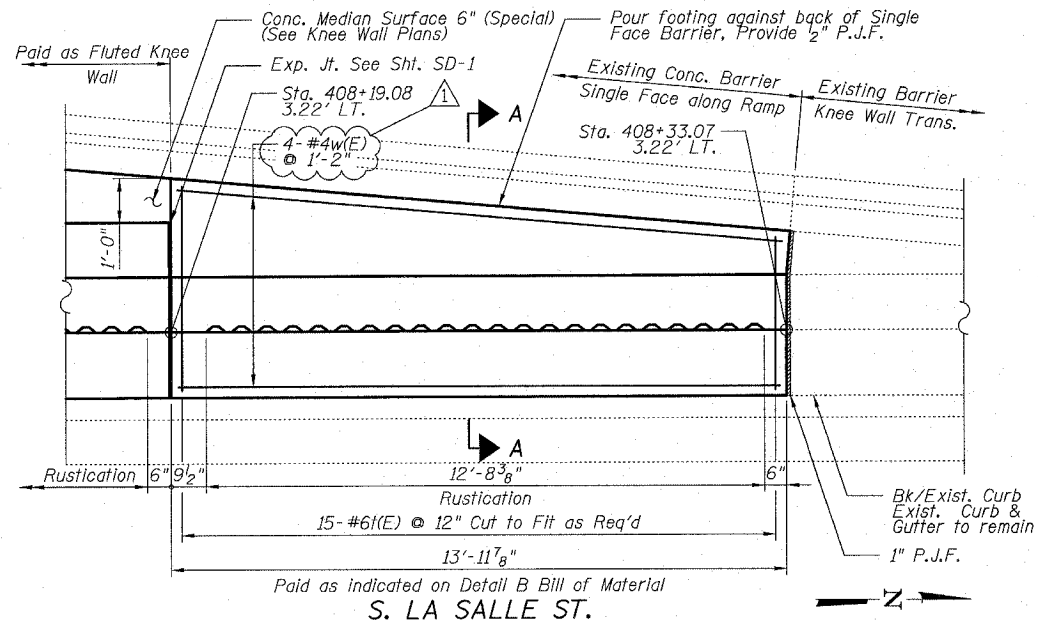
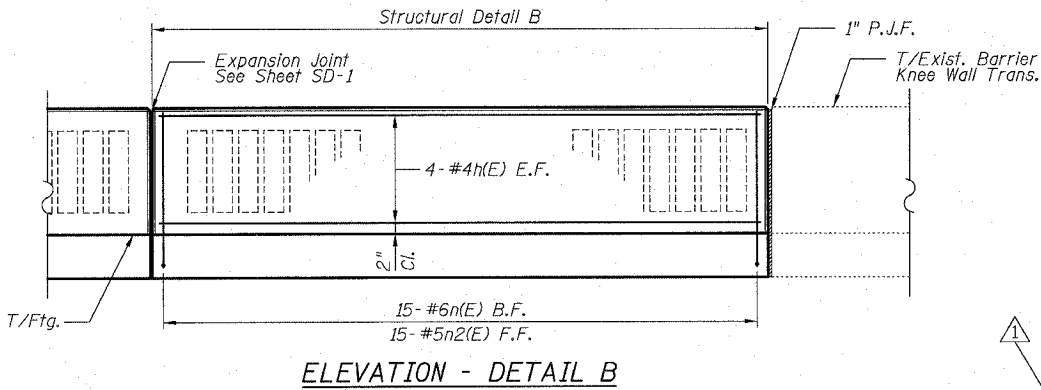


F.A.I.	SECTION	COUNTY	TOTAL SHEETS	SHEET NO.
94/90	*	COOK	37	19
STA.		TO STA.		
FED. ROAD DIST. NO.		ILLINOIS FED. AID PROJECT		
62992		(2323.6-2P&2324.6-1P1)		

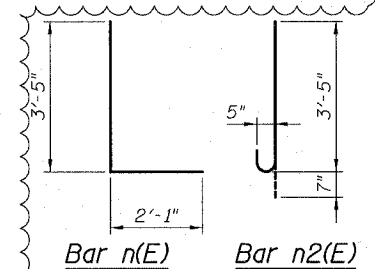
DETAIL B REINFORCEMENT SCHEDULE AND BILL OF MATERIAL

Bar	No.	Size	Length	Shape
h(E)	8	#4	13'-8"	—
n(E)	15	#6	5'-6"	L
n2(E)	15	#5	4'-0"	U
k(E)	15	#6	4'-8"	—
w(E)	4	#4	13'-10"	—
Item	Unit	Qty.		
① Concrete Structures	Cu. Yd.	2.3		
② Concrete Superstructure	Cu. Yd.	1.9		
Reinforcement Bars, Epoxy Coated	Pound	410		
Rustication Finish	Sq. Ft.	24		
Protective Coat	Sq. Yd.	9		



NOTES:

- All stations and offsets measured from S. La Salle St.
- Concrete: $f'c = 3500$ psi
- Provide California Finish on top of foundation between stem and Frontage Road. See Roadway Details.
- At locations where Fluted Knee Wall abuts a rigid Structure, a 1" thick Preformed Expansion Joint Filler conforming to the shape of the Structure shall be installed between the Wall and the Structure.
- Apply Protective Coat to top and back face of stem and top of Frontage Road side of foundation.
- For Fluted Knee Wall standard details, see Sheet SD-1
- B.F. = Back Face (Frontage Road Side)
F.F. = Front Face (Expressway Side)
E.F. = Each Face
- Saw cut sidewalk along removal line full depth to provide neat line.
- Shape finished grade as required to match existing conditions.
- P.J.F. included in cost of concrete structures.



SHEET SD-3

REVISIONS	
NAME	DATE
REVISED	3-6-08
ADDENDUM 1	5-30-08

ILLINOIS DEPARTMENT OF TRANSPORTATION
F.A.I. 94/90 (DAN RYAN EXPRESSWAY)
 NORTHBOUND KNEE WALLS (PERSHING RD TO 35TH ST)

DETAIL B

SCALE: N.T.S. DRAWN BY: PAH
 DATE: 03/06/08 CHECKED BY: BLU

BOWMAN, BARRETT & ASSOCIATES INC.
 CONSULTING ENGINEERS
 Chicago, Illinois
 312.228.0100
 www.bbdatinc.com

166600001/01/1/3/E SHEETS 660 3125/5/03/09 442-45 PM 5/23/2008