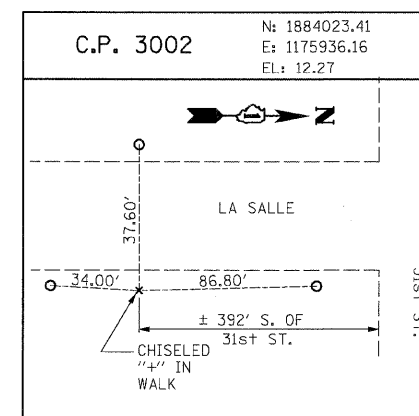
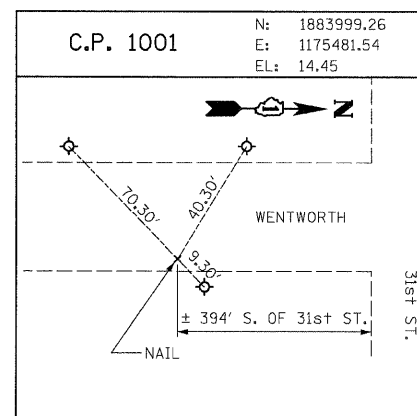
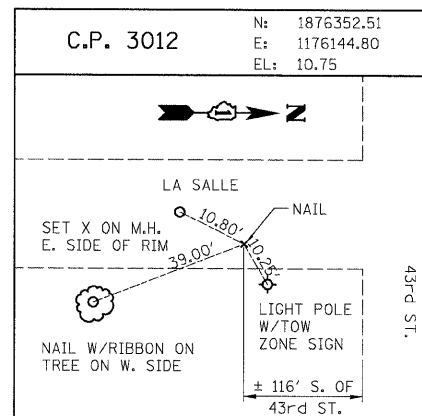
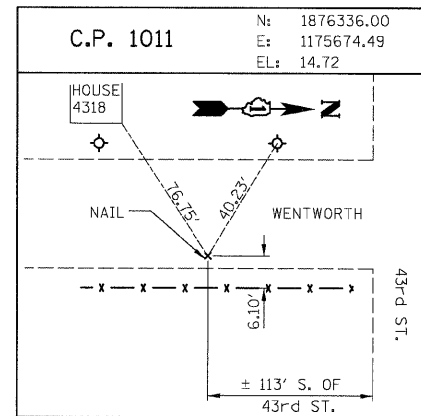


|                     |          |                       |              |           |
|---------------------|----------|-----------------------|--------------|-----------|
| F.A.I.              | SECTION  | COUNTY                | TOTAL SHEETS | SHEET NO. |
| 94/90               |          | COOK                  | 37           | 9         |
| STA.                |          | TO STA.               |              |           |
| FED. ROAD DIST. NO. | ILLINOIS | FED. AID PROJECT      |              |           |
| 62992               |          | (2323.6-2P&2324.6-1P) |              |           |



RAMP P.O.T. COORDINATE INFORMATION

| POINT | DESCRIPTION | STATION    | NORTH        | EAST         |
|-------|-------------|------------|--------------|--------------|
| BEGIN | RAMP 47A    | 5060+00.00 | 1,875,185.77 | 1,175,764.15 |
| END   | RAMP 47A    | 5074+13.97 | 1,873,854.99 | 1,175,322.86 |
| BEGIN | RAMP 47B    | 6059+26.00 | 1,874,166.99 | 1,175,887.94 |
| END   | RAMP 47B    | 6069+64.12 | 1,875,168.85 | 1,176,104.15 |
| BEGIN | RAMP 43C    | 7050+00.00 | 1,876,238.80 | 1,175,669.59 |
| END   | RAMP 43C    | 7059+84.92 | 1,875,259.95 | 1,175,764.44 |
| BEGIN | RAMP 43D    | 8051+00.00 | 1,875,411.12 | 1,176,092.10 |
| END   | RAMP 43D    | 8059+26.72 | 1,876,237.16 | 1,176,124.86 |
| BEGIN | RAMP 43A    | 5040+09.48 | 1,877,475.98 | 1,175,723.30 |
| END   | RAMP 43A    | 5048+39.05 | 1,876,648.91 | 1,175,658.90 |
| BEGIN | RAMP 43B    | 6040+09.40 | 1,876,652.70 | 1,176,113.96 |
| END   | RAMP 43B    | 6050+27.76 | 1,877,664.85 | 1,176,007.29 |
| BEGIN | RAMP 39D    | 7040+16.52 | 1,878,882.40 | 1,175,597.87 |
| END   | RAMP 39D    | 7050+90.17 | 1,877,816.27 | 1,175,715.09 |
| BEGIN | RAMP 39C    | 8040+00.00 | 1,877,789.82 | 1,176,003.91 |
| END   | RAMP 39C    | 8051+05.89 | 1,878,894.81 | 1,176,048.24 |

| POINT | DESCRIPTION | STATION    | NORTH        | EAST         |
|-------|-------------|------------|--------------|--------------|
| BEGIN | RAMP T35D   | 7040+08.53 | 1,880,349.18 | 1,175,584.62 |
| END   | RAMP T35D   | 7053+38.03 | 1,879,025.07 | 1,175,691.43 |
| BEGIN | RAMP T35C   | 8020+34.46 | 1,879,121.15 | 1,175,958.93 |
| END   | RAMP T35C   | 8029+64.40 | 1,880,049.40 | 1,176,014.92 |
| BEGIN | RAMP T39A   | 5020+12.77 | 1,881,685.70 | 1,175,610.45 |
| END   | RAMP T39A   | 5028+45.01 | 1,880,854.96 | 1,175,560.34 |
| BEGIN | RAMP T39B   | 6019+89.02 | 1,880,556.70 | 1,175,995.95 |
| END   | RAMP T39B   | 6033+30.58 | 1,881,892.23 | 1,175,884.04 |
| BEGIN | RAMP 35A    | 5000+11.94 | 1,883,011.02 | 1,175,573.65 |
| END   | RAMP 35A    | 5008+14.74 | 1,882,209.69 | 1,175,525.14 |
| BEGIN | RAMP 35B    | 6000+06.87 | 1,882,050.72 | 1,175,953.56 |
| END   | RAMP 35B    | 6009+98.58 | 1,883,037.81 | 1,175,862.08 |
| BEGIN | RAMP 31D    | 6998+80.64 | 1,884,211.76 | 1,175,472.66 |
| END   | RAMP 31D    | 7009+73.36 | 1,883,123.75 | 1,175,571.65 |
| BEGIN | RAMP 31C    | 8000+11.68 | 1,883,273.75 | 1,175,856.72 |
| END   | RAMP 31C    | 8008+42.54 | 1,884,103.52 | 1,175,898.24 |

BENCH MARK NO. 3524 ELEV. 15.17  
 DESCRIPTION:  
 CROSS CUT ON NORTH FLANGE BOLT OF FIRE HYDRANT AT THE NORTHWEST CORNER OF 31st ST. AND WENTWORTH AVE.

BENCH MARK NO. 3525 ELEV. 16.93  
 DESCRIPTION:  
 CROSS CUT ON NORTHWEST FLANGE BOLT OF FIRE HYDRANT AT THE NORTHWEST CORNER OF 35th ST. AND WENTWORTH AVE.

BENCH MARK NO. 3526 ELEV. 17.37  
 DESCRIPTION:  
 CROSS CUT ON NORTHWEST FLANGE BOLT OF FIRE HYDRANT AT THE WENTWORTH GARDEN OFFICE ALONG THE WEST SIDE OF WENTWORTH AVE.

BENCH MARK NO. 3527 ELEV. 15.63  
 DESCRIPTION:  
 CROSS CUT ON NORTHERLY FLANGE BOLT OF FIRE HYDRANT AT THE NORTHWEST CORNER OF ROOT ST. AND WENTWORTH AVE.

BENCH MARK NO. 3539 ELEV. 13.10  
 DESCRIPTION:  
 CROSS CUT ON EASTERLY BOLT OF LIGHT POLE BASE AT THE SOUTHEAST CORNER OF 43rd ST. AND LA SALLE ST.

BENCH MARK NO. 3540 ELEV. 12.33  
 DESCRIPTION:  
 SQUARE CUT ON THE SOUTHWEST CORNER OF THE TRAFFIC CONTROL BOX AT THE NORTHEAST CORNER OF 39th ST. AND LA SALLE ST.

BENCH MARK NO. 3541 ELEV. 14.78  
 DESCRIPTION:  
 CROSS CUT ON THE SOUTHWEST BOLT OF LIGHT POLE BASE AT THE SOUTH EAST CORNER OF 35th ST. AND LA SALLE ST.

BENCH MARK NO. 3542 ELEV. 13.57  
 DESCRIPTION:  
 CROSS CUT ON THE EASTERLY FLANGE BOLT OF THE FIRE HYDRANT AT THE INTERSECTION OF 31st ST. AND LA SALLE ST.

BOWMAN, BARRETT & ASSOCIATES INC  
 CONSULTING ENGINEERS  
 Chicago, Illinois  
 312.228.0100  
 www.bbandainc.com

| REVISIONS |        |
|-----------|--------|
| NAME      | DATE   |
| REVISED   | 3-6-08 |
|           |        |
|           |        |
|           |        |
|           |        |
|           |        |
|           |        |
|           |        |
|           |        |
|           |        |

ILLINOIS DEPARTMENT OF TRANSPORTATION  
 F.A.I. 94/90 (DAN RYAN EXPRESSWAY)  
 NORTHBOUND KNEE WALLS (PERSHING RD TO 35TH STREET)

ALIGNMENT PLAN

SCALE: 1"=100'  
 DATE: 03/06/08  
 DRAWN BY: JDC  
 CHECKED BY: RS

IN: 660-CADD/CH/CH/IN/IE/SHEETS/660-IE/CAL/D/01.dgn

3/16/2008 12:00:42 PM