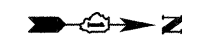
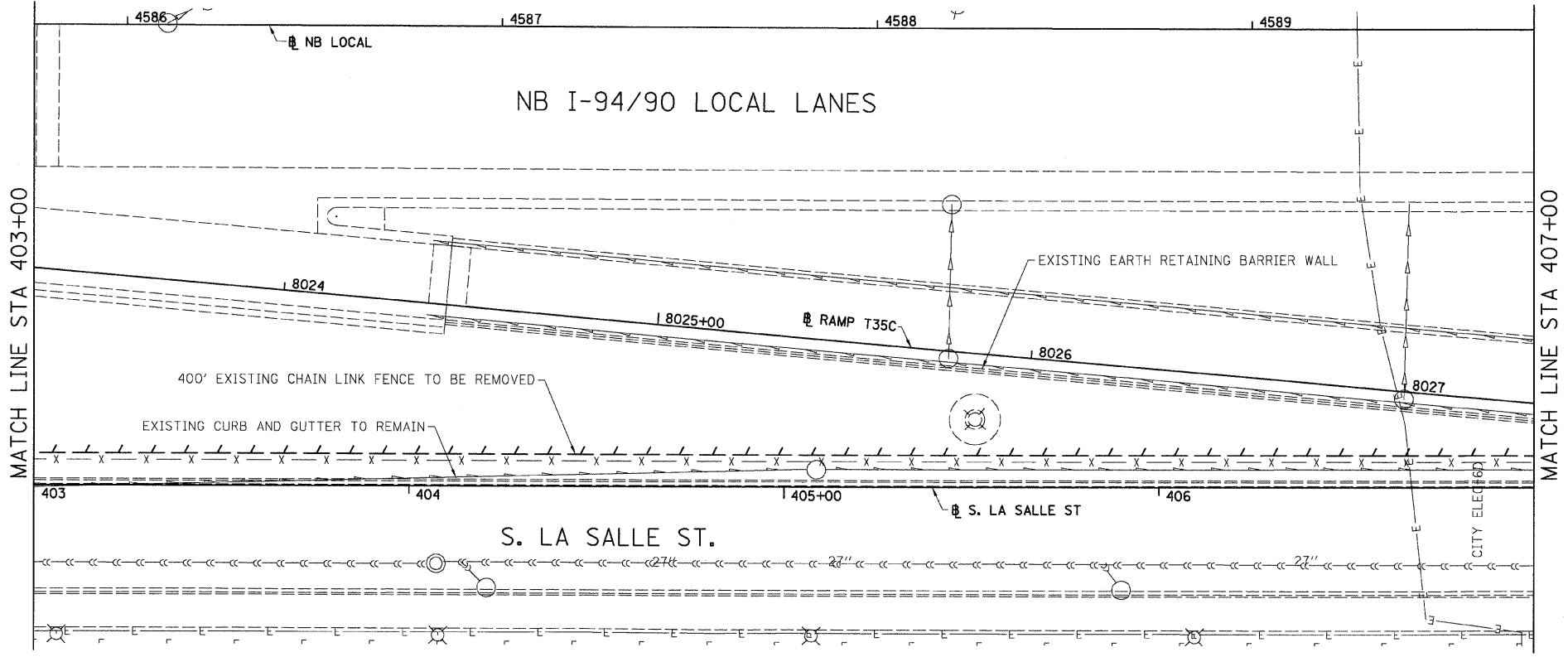
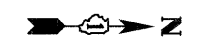
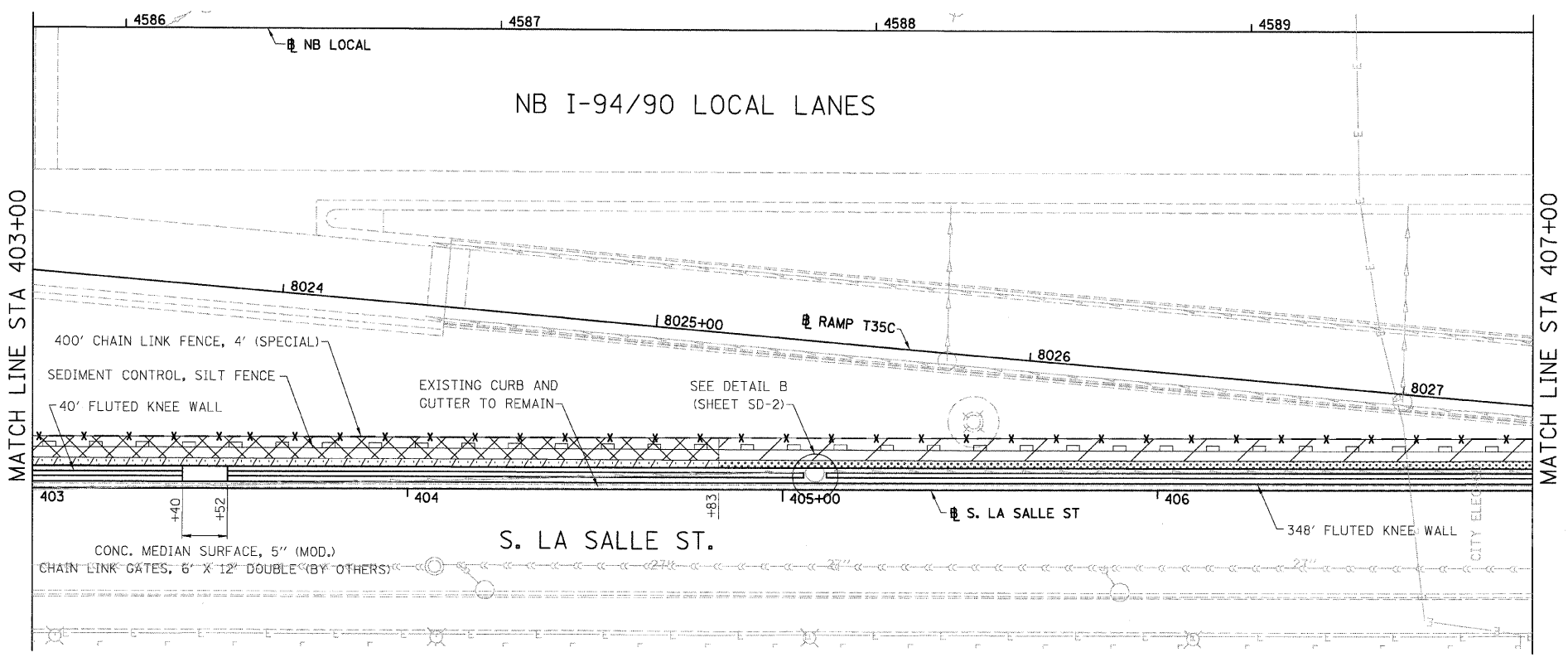


F.A.I.	SECTION	COUNTY	TOTAL SHEETS	SHEET NO.
94/90		COOK	37	11
STA.		TO STA.		
FED. ROAD DIST. NO.		ILLINOIS	FED. AID PROJECT	
62992		• (2323.6-2P&2324.6-1P1)		



LEGEND:
 LINEAR REMOVALS

EXISTING CONDITIONS AND REMOVAL
 PROPOSED IMPROVEMENTS

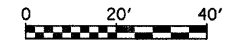


LEGEND:

- GROUND PREPARATION FOR SEEDING, CLASS 2A
EROSION CONTROL BLANKET
- GROUND PREPARATION FOR SEEDING, CLASS 4 (MODIFIED)
SEEDING CLASS 5A (MODIFIED)
EROSION CONTROL BLANKET
- TOPSOIL FURNISH AND PLACE, 4"
SEEDING, CLASS 2A
EROSION CONTROL BLANKET
- TOPSOIL FURNISH AND PLACE, 12"
SEEDING, CLASS 2A
EROSION CONTROL BLANKET
- TOPSOIL FURNISH AND PLACE, 12"
SEEDING CLASS 4 (MODIFIED)
SEEDING, CLASS 5A (MODIFIED)
EROSION CONTROL BLANKET

NOTES:

- SEE STRUCTURAL DETAIL FOR FLUTED KNEE WALL DETAILS.
- ALL POINT CALLOUTS ARE TAKEN AT THE EDGE OF THE KNEE WALL BASE.



PL-2

REVISIONS	
NAME	DATE
REVISED	3-6-08

ILLINOIS DEPARTMENT OF TRANSPORTATION
 F.A.I. 94/90 (DAN RYAN EXPRESSWAY)
 NORTHBOUND KNEE WALLS (PERSHING RD TO 35TH ST)

EXISTING AND PROPOSED
 KNEE WALL PLANS

SCALE: 1"=20'
 DATE: 03/06/08

DRAWN BY: JDC
 CHECKED BY: ODM

BOWMAN, BARRETT & ASSOCIATES INC.
 CONSULTING ENGINEERS
 Chicago, Illinois
 312.228.0100
 www.bbainc.com

3/16/2008 5:03:42 PM