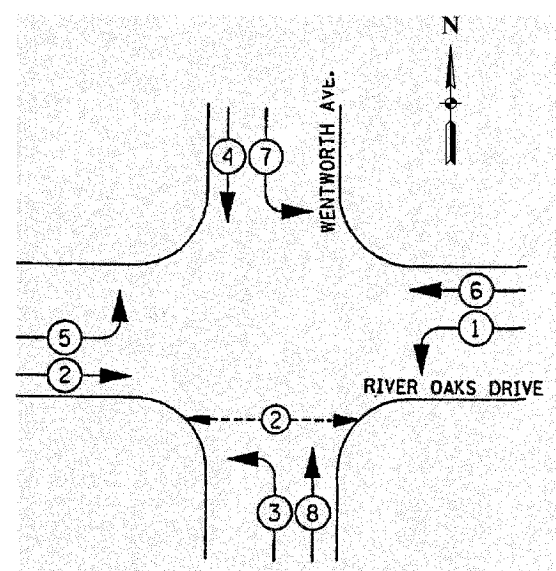


CONTRACT NO. 63003

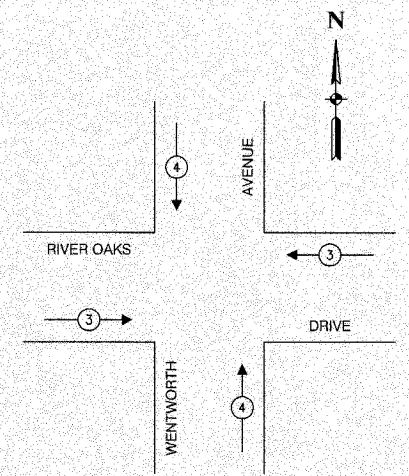
CABLE PLAN LEGEND

- | EXISTING | PROPOSED |   |
|----------|----------|---|
|          |          | 8" TRAFFIC SIGNAL SECTION   |
|          |          | 12" TRAFFIC SIGNAL SECTION  |
|          |          | 12" PEDESTRIAN SIGNAL SECTION   |
|          |          | 12" PEDESTRIAN SIGNAL SECTION   |
|          |          | CONTROLLER CABINET  |
|          |          | SERVICE INSTALLATION  |
|          |          | TELEPHONE CONNECTION  |
|          |          | MAGNETIC DETECTOR   |
|          |          | EMERGENCY VEHICLE LIGHT DETECTOR  |
|          |          | CONFIRMATION BEACON   |
|          |          | PUSHBUTTON DETECTOR   |
|          |          | VEHICLE DETECTOR, INDUCTION LOOP  |
|          |          | DENOTES NUMBER OF CONDUCTORS. ALL CABLE NO. 14 EXCEPT AS INDICATED. ALL LOOP DETECTOR CABLE TO BE SHIELDED. |
|          |          | SIGNAL FACE WITH BACKPLATE  |
|          |          | "P" INDICATES PROGRAMMED HEAD   |
|          |          | RAILROAD CONTROL CABINET  |
|          |          | ILLUMINATED SIGN, FIBER OPTIC   |
|          |          | "NO LEFT TURN"  |
|          |          | ILLUMINATED SIGN, FIBER OPTIC   |
|          |          | "NO RIGHT TURN"   |
|          |          | H/C GROUND ROD AT HANDHOLE, DOUBLE HANDHOLE, OR CONTROLLER  |
|          |          | P GROUND ROD AT POST OR MAST ARM POLE   |
|          |          | S GROUND ROD AT ELECTRIC SERVICE INSTALLATION   |



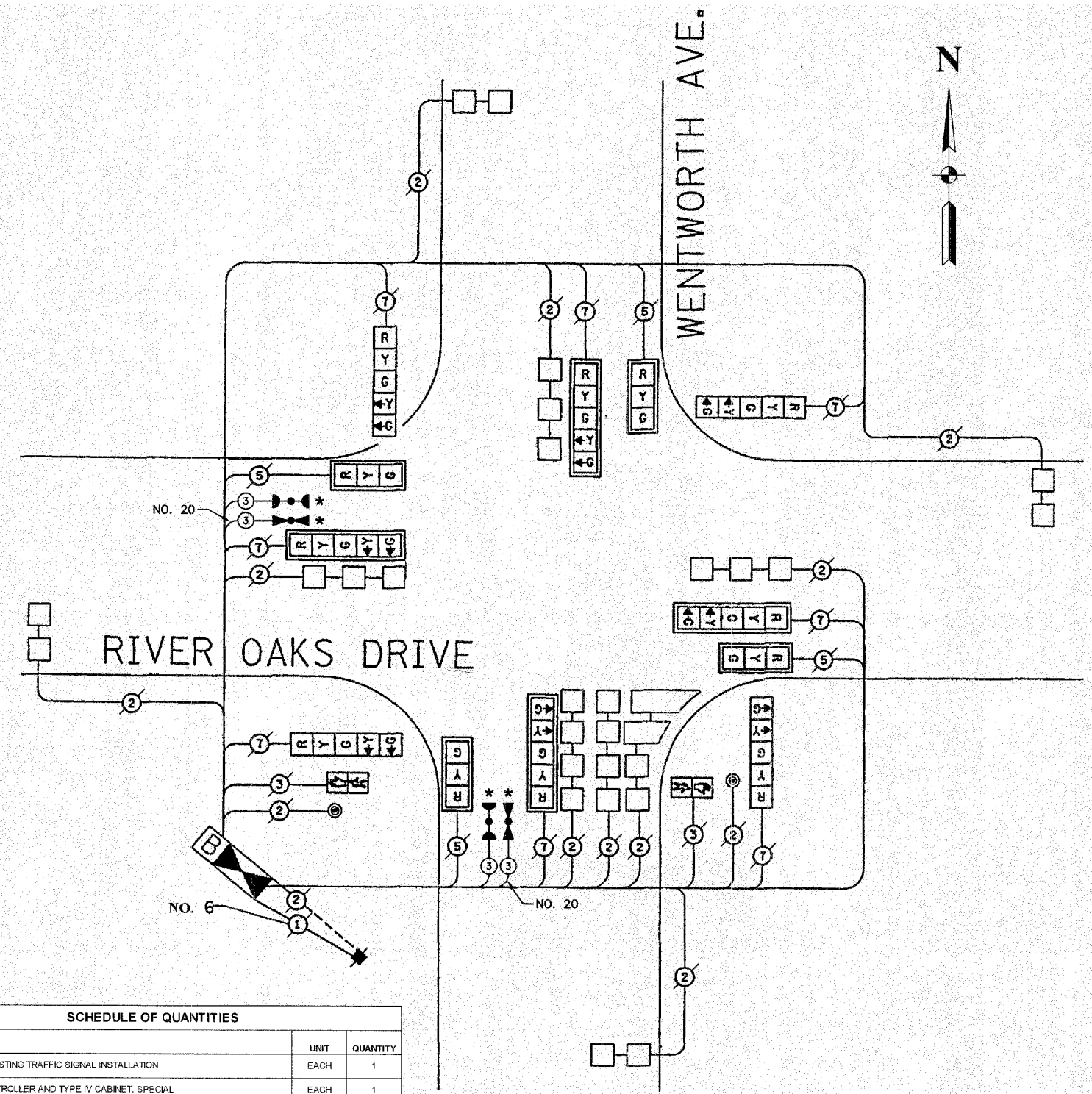
PHASE DESIGNATION DIAGRAM

- LEGEND**
- DUAL ENTRY PHASE
  - PROTECTED LEFT TURN PHASE
  - OVERLAP
  - PEDESTRIAN PHASE
  - NUMBER REFERS TO ASSOCIATED PHASE



EMERGENCY VEHICLE PREEMPTION SEQUENCE

PROPOSED EMERGENCY VEHICLE PREEMPTORS		
EMERGENCY VEHICLE PREEMPTOR	3	4
MOVEMENT		



SCHEDULE OF QUANTITIES		
PAY ITEM	UNIT	QUANTITY
MAINTENANCE OF EXISTING TRAFFIC SIGNAL INSTALLATION	EACH	1
FULL-ACTUATED CONTROLLER AND TYPE IV CABINET, SPECIAL	EACH	1
ELECTRIC CABLE IN CONDUIT, SIGNAL NO. 14 3C	FOOT	361
INDUCTIVE LOOP DETECTOR	EACH	10
LIGHT DETECTOR	EACH	2
LIGHT DETECTOR AMPLIFIER	EACH	1
REMOVE EXISTING TRAFFIC SIGNAL EQUIPMENT	EACH	1
ELECTRIC CABLE IN CONDUIT NO. 20 3/C, TWISTED, SHIELDED	FOOT	361
MAGNETIC DETECTOR AMPLIFIER	EACH	2

**NOTE**  
 \* 1. THIS PLAN IS FOR THE PURPOSE OF INSTALLING EMERGENCY VEHICLE PREEMPTION EQUIPMENT AS SHOWN PER PLAN INDICATED IN THE SCHEDULE OF QUANTITIES. ALL OTHER EQUIPMENT SHOWN SHALL BE DISREGARDED.

★ PLANS MODIFIED BY ROBINSON ENGINEERING, LTD

REVISIONS	
NAME	DATE
ADDED EV PREEMPTION	01/02/08

**CITY OF CALUMET CITY  
LOCATION NO. 4**

ILLINOIS DEPARTMENT OF TRANSPORTATION

**PROPOSED EMERGENCY VEHICLE PREEMPTION  
CABLE PLAN, PHASE DESIGNATION DIAGRAM &  
SCHEDULE OF QUANTITIES  
WENTWORTH AVENUE & RIVER OAKS DRIVE**

SCALE: VERT. \_\_\_\_\_  
 HORIZ. \_\_\_\_\_

DATE \_\_\_\_\_ DRAWN BY \_\_\_\_\_  
 CHECKED BY \_\_\_\_\_

ROBINSON ENGINEERING, LTD.  
 1700 SOUTH PARK AVENUE SOUTH HOLLAND, ILLINOIS 60473  
 (708) 381-6700 FAX (708) 381-0208  
 ILLINOIS DESIGN FIRM REGISTRATION NO. 184001126