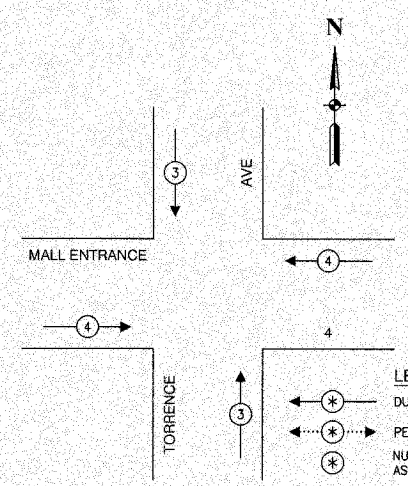


SECTION	COUNTY	TOTAL SHEETS	SHEET NO.
08-00146-00-TL	COOK	273	048
STA.		TO STA.	
FED. ROAD DIST. NO.		ILLINOIS	FED. AID PROJECT

CONTRACT NO. 63003

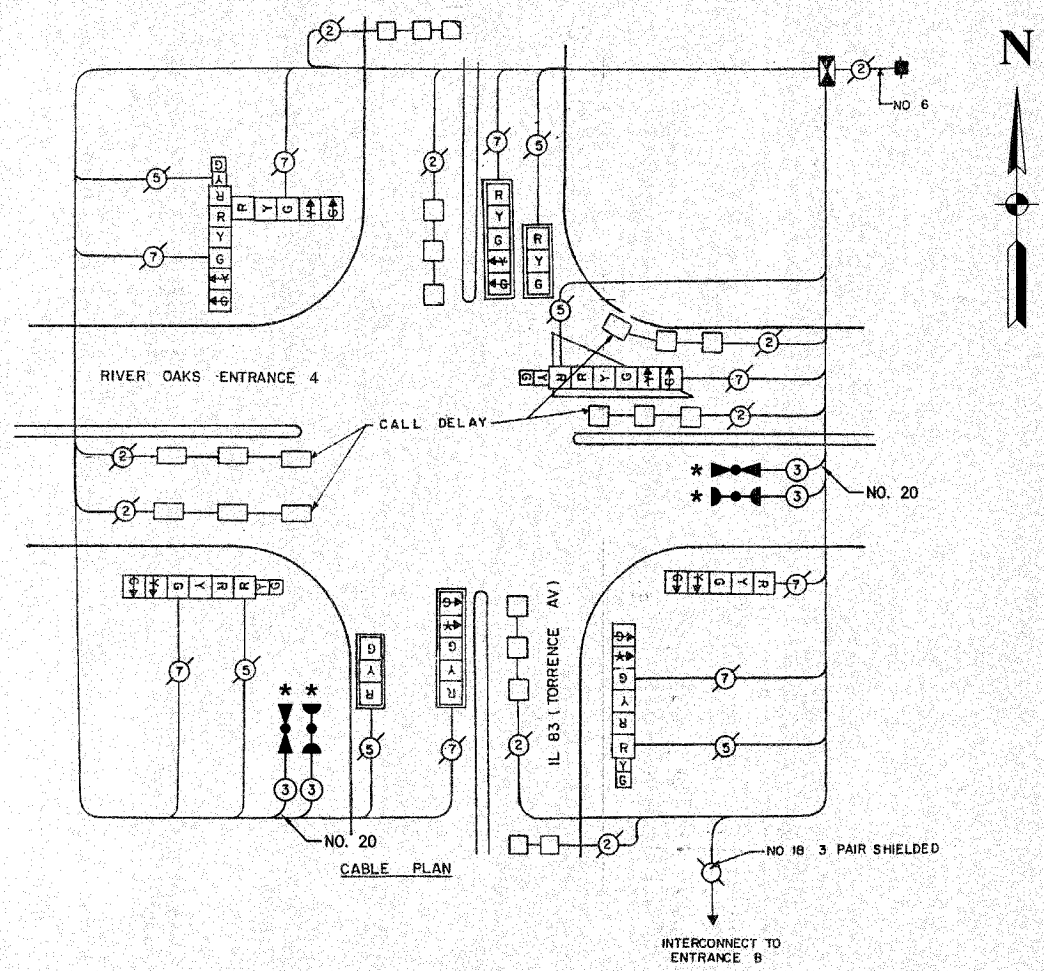
CABLE PLAN LEGEND

- | EXISTING | PROPOSED | |
|----------|----------|---|
| | | 8" TRAFFIC SIGNAL SECTION |
| | | 12" TRAFFIC SIGNAL SECTION |
| | | 12" PEDESTRIAN SIGNAL SECTION |
| | | 12" PEDESTRIAN SIGNAL SECTION |
| | | CONTROLLER CABINET |
| | | SERVICE INSTALLATION |
| | | TELEPHONE CONNECTION |
| | | MAGNETIC DETECTOR |
| | | EMERGENCY VEHICLE LIGHT DETECTOR |
| | | CONFIRMATION BEACON |
| | | PUSHBUTTON DETECTOR |
| | | VEHICLE DETECTOR, INDUCTION LOOP |
| | | DENOTES NUMBER OF CONDUCTORS.
ALL CABLE NO. 14 EXCEPT AS INDICATED.
ALL LOOP DETECTOR CABLE TO BE SHIELDED. |
| | | SIGNAL FACE WITH BACKPLATE
"P" INDICATES PROGRAMMED HEAD |
| | | RAILROAD CONTROL CABINET |
| | | ILLUMINATED SIGN, FIBER OPTIC
"NO LEFT TURN" |
| | | ILLUMINATED SIGN, FIBER OPTIC
"NO RIGHT TURN" |
| | | H/C
GROUND ROD AT HANDHOLE,
DOUBLE HANDHOLE, OR CONTROLLER |
| | | P
GROUND ROD AT POST OR MAST ARM POLE |
| | | S
GROUND ROD AT ELECTRIC SERVICE INSTALLATION |



EMERGENCY VEHICLE PREEMPTION SEQUENCE

PROPOSED EMERGENCY VEHICLE PREEMPTORS		
EMERGENCY VEHICLE PREEMPTOR	3	4
MOVEMENT	↑	→



NORMAL SEQUENCE OF OPERATIONS

MOVEMENT	NORMAL SEQUENCE OF OPERATIONS																						F L A S H											
	1+5					1+6					2+5				2+6		8																	
PHASE	1+5					1+6					2+5				2+6		8																	
INTERVAL	1	2	3	4	5	6	7A	7B	8A	8B	9	10A	10B	11	12A	12B	13A	13B	14	15A	15B	16	17A	17B	18	19A	19B	20A	20B	21A	21B	22A	22B	
CHANGE TO	1+6	2+5	2+6	8		1+5	2+5	2+6	8		1+5	1+6	2+6	8		8																		
IL 83 (TORRENCE AV) N/B NEAR AND MID-MOUNT SIGNALS	R	R	R	R	R	G	Y	R	Y	R	G	Y	R	R	R	R	R	R	R	R	R	R	R	R	R	R	R	R	R	R	R	R	R	
IL 83 (TORRENCE AV) N/B FAR LEFT AND MAST ARM SIGNALS	R	R	R	R	R	G	Y	R	Y	R	G	Y	R	R	R	R	R	R	R	R	R	R	R	R	R	R	R	R	R	R	R	R	R	
IL 83 (TORRENCE AV) S/B NEAR RIGHT AND MID-MOUNT SIGNALS	R	R	R	R	R	R	R	R	R	R	R	R	R	R	R	R	R	R	R	R	R	R	R	R	R	R	R	R	R	R	R	R	R	
IL 83 (TORRENCE AV) S/B FAR LEFT AND MAST ARM SIGNALS	R	R	R	R	R	R	R	R	R	R	R	R	R	R	R	R	R	R	R	R	R	R	R	R	R	R	R	R	R	R	R	R	R	
ENTRANCE C E/B NEAR AND FAR RIGHT SIGNALS	R	R	R	R	R	R	R	R	R	R	R	R	R	R	R	R	R	R	R	R	R	R	R	R	R	R	R	R	R	R	R	R	R	
ENTRANCE C E/B FAR LEFT SIGNAL	R	R	R	R	R	R	R	R	R	R	R	R	R	R	R	R	R	R	R	R	R	R	R	R	R	R	R	R	R	R	R	R	R	
ENTRANCE C W/B NEAR AND FAR RIGHT SIGNALS	R	R	R	R	R	R	R	R	R	R	R	R	R	R	R	R	R	R	R	R	R	R	R	R	R	R	R	R	R	R	R	R	R	
ENTRANCE C W/B FAR LEFT SIGNAL	R	R	R	R	R	R	R	R	R	R	R	R	R	R	R	R	R	R	R	R	R	R	R	R	R	R	R	R	R	R	R	R	R	

Phases 2 and 6 are to be volume density type
 Phase 2+6 cannot clear to 1+5, 1+6, or 2+5
 Single entry type traffic signal controller shall not be used
 Left turn phases to have non-locking memory

NOTE
 * 1. THIS PLAN IS FOR THE PURPOSE OF INSTALLING EMERGENCY VEHICLE PREEMPTION EQUIPMENT AS SHOWN PER PLAN INDICATED IN THE SCHEDULE OF QUANTITIES. ALL OTHER EQUIPMENT SHOWN SHALL BE DISREGARDED.

SCHEDULE OF QUANTITIES		
PAY ITEM	UNIT	QUANTITY
MAINTENANCE OF EXISTING TRAFFIC SIGNAL INSTALLATION	EACH	1
ELECTRIC CABLE IN CONDUIT, SIGNAL NO. 14 3C	FOOT	500
TRAFFIC SIGNAL POST, GALVANIZED STEEL 18 FT.	EACH	1
LIGHT DETECTOR	EACH	2
LIGHT DETECTOR AMPLIFIER	EACH	1
RELOCATE EXISTING SIGNAL HEAD	EACH	2
REMOVE AND REINSTALL ELECTRIC CABLE FROM CONDUIT	FOOT	15
REMOVE EXISTING TRAFFIC SIGNAL EQUIPMENT	EACH	1
ELECTRIC CABLE IN CONDUIT NO. 20 3/C, TWISTED, SHIELDED	FOOT	500

CITY OF CALUMET CITY
LOCATION NO. 15

ILLINOIS DEPARTMENT OF TRANSPORTATION

★ PLANS MODIFIED BY ROBINSON ENGINEERING, LTD

REVISIONS	
NAME	DATE
ADDED EV PREEMPTION NEW 18 POST	01/02/09

PROPOSED EMERGENCY VEHICLE PREEMPTION CABLE PLAN, PHASE DESIGNATION DIAGRAM & SCHEDULE OF QUANTITIES
TORRENCE AVE & RIVER OAKS MALL ENTRANCE 4

SCALE: VERT. _____ DRAWN BY _____
 HORIZ. _____ CHECKED BY _____
 DATE _____