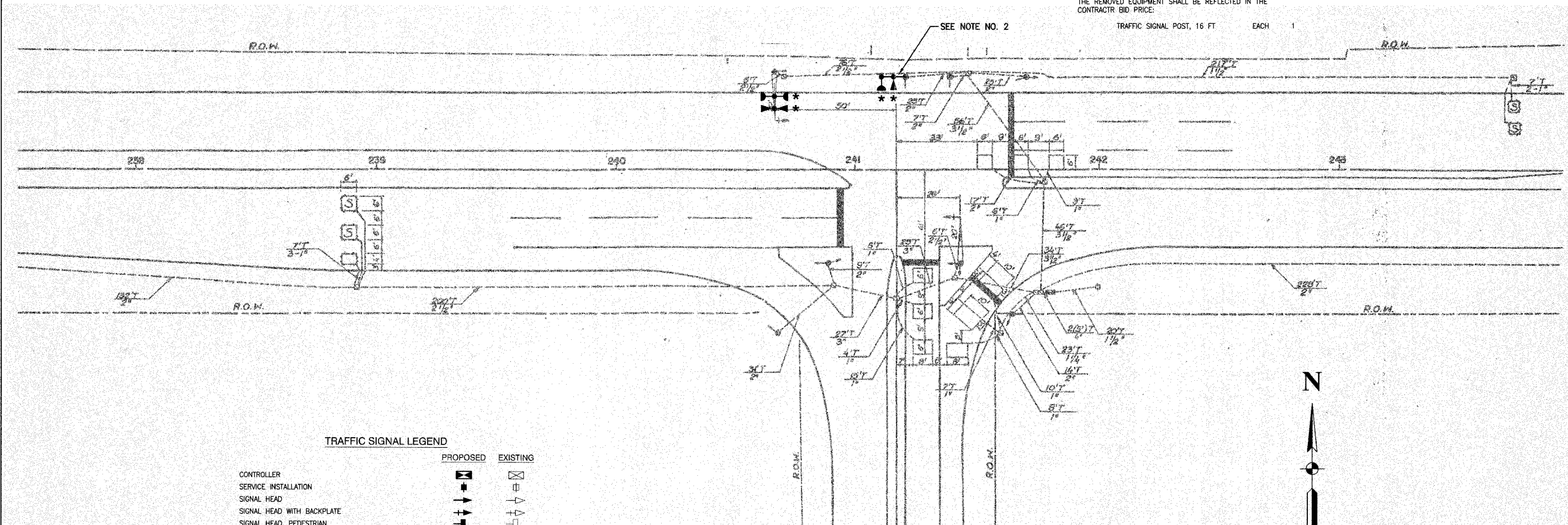


F. A. SHEET NO.	SECTION	COUNTY	TOTAL SHEETS	SHEET NO.
	08-00146-00-TL	COOK	273	075
STA.		TO STA.		
FED. ROAD DIST. NO.	ILLINOIS	FED. AID PROJECT		

CONTRACT NO. 63003

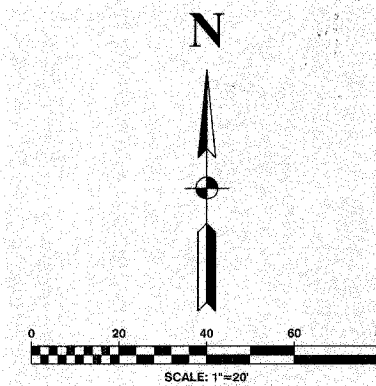
\* THE FOLLOWING ITEMS SHALL BE REMOVED BY THE CONTRACTOR AND SHALL BE DISPOSED OF BY THEM OUTSIDE THE RIGHT-OF-WAY AT THEIR EXPENSE. THE SALVAGE VALUE OF THE REMOVED EQUIPMENT SHALL BE REFLECTED IN THE CONTRACTOR BID PRICE:

TRAFFIC SIGNAL POST, 16 FT EACH 1



TRAFFIC SIGNAL LEGEND

	PROPOSED	EXISTING
CONTROLLER	[Symbol]	[Symbol]
SERVICE INSTALLATION	[Symbol]	[Symbol]
SIGNAL HEAD	[Symbol]	[Symbol]
SIGNAL HEAD WITH BACKPLATE	[Symbol]	[Symbol]
SIGNAL HEAD, PEDESTRIAN	[Symbol]	[Symbol]
SIGNAL POST	[Symbol]	[Symbol]
MAST ARM ASSEMBLY AND POLE, STEEL	[Symbol]	[Symbol]
MAST ARM ASSEMBLY AND POLE, ALUMINUM	[Symbol]	[Symbol]
COMBINATION MAST ARM ASSEMBLY AND POLE STEEL WITH LUMINAIRE	[Symbol]	[Symbol]
UNIT DUCT	[Symbol]	[Symbol]
COMMON TRENCH	[Symbol]	[Symbol]
HANDHOLE	[Symbol]	[Symbol]
HEAVY DUTY HANDHOLE	[Symbol]	[Symbol]
DOUBLE HANDHOLE	[Symbol]	[Symbol]
G.S. CONDUIT IN GROUND	[Symbol]	[Symbol]
PEDESTRIAN PUSHBUTTON DETECTOR	[Symbol]	[Symbol]
DETECTOR LOOP	[Symbol]	[Symbol]
CAST IRON JUNCTION BOX	[Symbol]	[Symbol]
EMERGENCY VEHICLE SYSTEM DETECTOR	[Symbol]	[Symbol]
CONFIRMATION BEACON	[Symbol]	[Symbol]
SIGNAL HEAD OPTICALLY PROGRAMMED	[Symbol]	[Symbol]
CONDUIT SPLICE	[Symbol]	[Symbol]
WOOD POLE	[Symbol]	[Symbol]
RACEWAY FOR MAGNETIC DETECTOR, TYPE I OR TYPE II	[Symbol]	[Symbol]
VEHICLE DETECTOR, NON COMPENSATED MAGNETIC TYPE	[Symbol]	[Symbol]
RAILROAD CONTROL CABINET	[Symbol]	[Symbol]
TELEPHONE CONNECTION	[Symbol]	[Symbol]
ILLUMINATED SIGN, FIBER OPTIC "NO LEFT TURN"	[Symbol]	[Symbol]
ILLUMINATED SIGN, FIBER OPTIC "NO RIGHT TURN"	[Symbol]	[Symbol]



NOTES

- \* 1. THIS PLAN IS FOR THE PURPOSE OF INSTALLING EMERGENCY VEHICLE PREEMPTION EQUIPMENT AS SHOWN PER PLAN INDICATED IN THE SCHEDULE OF QUANTITIES. ALL OTHER EQUIPMENT SHOWN SHALL BE DISREGARDED.
- 2. EXISTING SIGNAL POST SHALL BE REPLACED WITH NEW 18-FOOT SIGNAL POST ON EXISTING FOUNDATION. RELOCATION OF ANY EXISTING SIGNAL HEADS, PEDESTRIAN SIGNAL HEADS OR PEDESTRIAN PUSHBUTTONS SHALL BE PAID FOR SEPERATELY. RELOCATION OF ANY SIGNS BRACKETED TO THE POST SHALL BE INCIDENTAL. THE LIGHT DETECTOR SHALL BE BRACKET MOUNTED TO THE TOP OF THE NEW POST. THE SALVAGE VALUE OF THE EXISTING POST SHALL BE INCLUDED IN THE PRICE OF THE PAY ITEM. -TRAFFIC SIGNAL POST, GALVANIZED STEEL, 16 FT.-

CITY OF CALUMET CITY  
LOCATION NO. 29

ILLINOIS DEPARTMENT OF TRANSPORTATION  
**PROPOSED EMERGENCY VEHICLE PREEMPTION  
RIVER OAKS DRIVE & RING ROAD**

\* PLANS MODIFIED BY  
ROBINSON ENGINEERING, LTD

REVISIONS	
NAME	DATE
ADDED EV PREEMPTION	01/02/08
ADDED 18' SIGNAL POST	

SCALE: VERT. \_\_\_\_\_  
HORIZ. \_\_\_\_\_  
DATE \_\_\_\_\_ DRAWN BY \_\_\_\_\_  
CHECKED BY \_\_\_\_\_

ROBINSON ENGINEERING, LTD.  
1700 SOUTH PARK AVENUE SOUTH HOLLAND, ILLINOIS 60473  
708.531.4700 FAX 708.531.5804  
ILLINOIS DESIGN FIRM REGISTRATION NO. 18400126