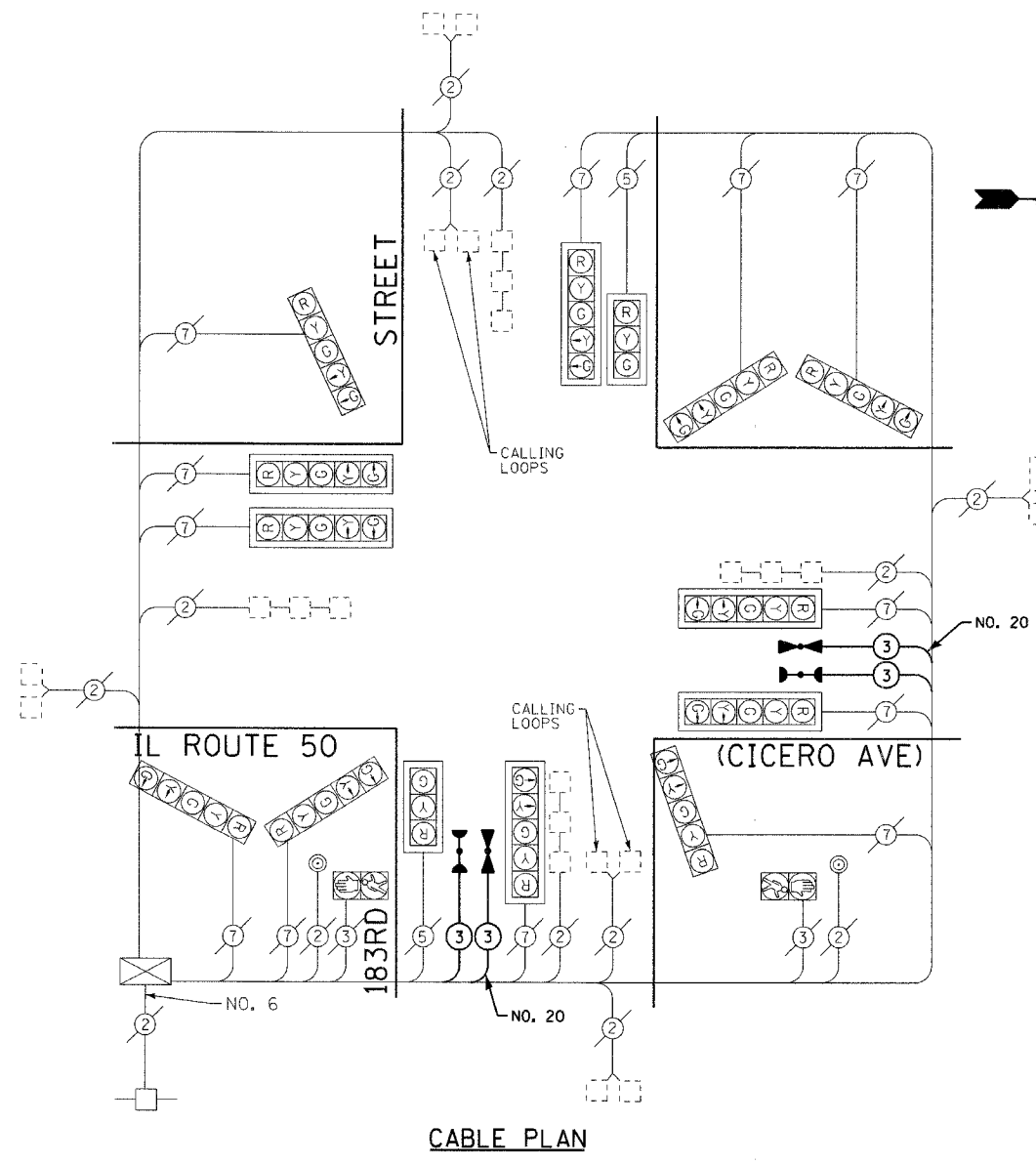


F.A. RTE.	SECTION	COUNTY	TOTAL SHEETS	SHEET NO.
	08-00146-00-TL	COOK	273	119
STA.	TO STA.			
FED. ROAD DIST. NO.	ILLINOIS	FED. AID PROJECT	M-8003 (867)	
CONTRACT NO. 63033				

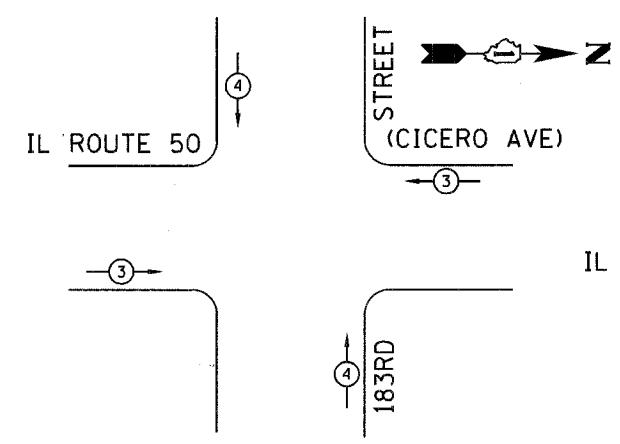
CABLE PLAN LEGEND

- | | | |
|-----------------|-----------------|--|
| EXISTING | PROPOSED | |
| | | 8" (200mm) TRAFFIC SIGNAL SECTION |
| | | 12" (300mm) TRAFFIC SIGNAL SECTION |
| | | 12" (300mm) PEDESTRIAN SIGNAL SECTION |
| | | 12" (300mm) PEDESTRIAN SIGNAL SECTION |
| | | CONTROLLER CABINET |
| | | SERVICE INSTALLATION |
| | | TELEPHONE CONNECTION |
| | | VEHICLE DETECTOR, INDUCTION LOOP |
| | | MAGNETIC DETECTOR |
| | | EMERGENCY VEHICLE LIGHT DETECTOR |
| | | CONFIRMATION BEACON |
| | | PUSHBUTTON DETECTOR |
| | | DENOTES NUMBER OF CONDUCTORS. ALL EXISTING CABLE NO. 14 EXCEPT AS INDICATED. ALL LOOP DETECTOR CABLE TO BE SHIELDED. |
| | | GROUND CABLE IN CONDUIT, NO. 6 SOLID COPPER (GREEN) |
| | | FIBER OPTIC CABLE IN CONDUIT, NO. 62.5/125 2-MM12F SM12F |
| | | SIGNAL FACE WITH BACKPLATE. "P" INDICATES PROGRAMMED HEAD |
| | | RAILROAD CONTROL CABINET |
| | | ILLUMINATED SIGN, "NO LEFT TURN" |
| | | ILLUMINATED SIGN, "NO RIGHT TURN" |
| | | GROUND CABLE 1C NO.6 |
| | | GROUND ROD AT HANDHOLE (H), DOUBLE HANDHOLE (H), OR CONTROLLER (C) |
| | | GROUND ROD AT POST (P), OR MAST ARM POLE (MA) |
| | | GROUND ROD AT ELECTRIC SERVICE INSTALLATION |
| | | LUMINAIRE |



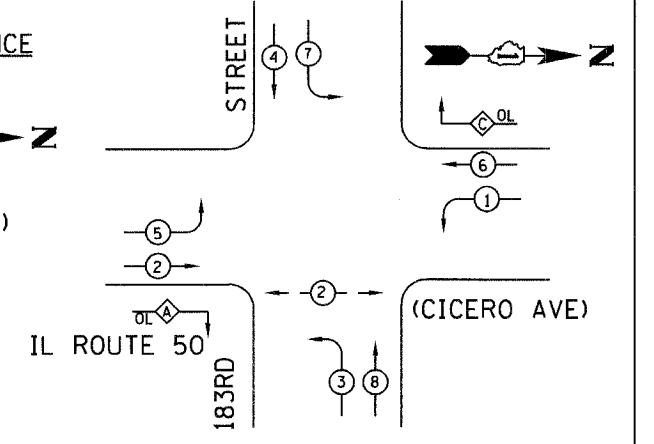
CABLE PLAN

EMERGENCY VEHICLE PREEMPTION SEQUENCE



PROPOSED EMERGENCY VEHICLE PREEMPTION		
EMERGENCY VEHICLE PREEMPTION	3	4
MOVEMENT	←→	↕

CONTROLLER SEQUENCE



PHASE DESIGNATION DIAGRAM

OVERLAP LETTER	PERMISSIVE PHASE	PROTECTED PHASE	DISPLAY
A	= 2 + 3	- 3	- 2
C	= 6 + 7	- 7	- 6

LEGEND

- DUAL ENTRY PHASE
- SINGLE ENTRY PHASE
- OVERLAP
- PEDESTRIAN PHASE
- NUMBER REFERS TO ASSOCIATED PHASE

SCHEDULE OF QUANTITIES

PAY ITEM	UNIT	QUANTITY
ELECTRIC CABLE IN CONDUIT, NO. 20 3/C, TWISTED SHIELDED	FOOT	311
ELECTRIC CABLE IN CONDUIT, SIGNAL, NO. 14 3C	FOOT	311
LIGHT DETECTOR	EACH	2
LIGHT DETECTOR AMPLIFIER	EACH	1
MAINTENANCE OF EXISTING TRAFFIC SIGNAL INSTALLATION	EACH	1

CITY OF COUNTRY CLUB HILLS
LOCATION NO. 50

ILLINOIS DEPARTMENT OF TRANSPORTATION
CABLE PLAN,
EMERGENCY VEHICLE PREEMPTION
SEQUENCE OF OPERATION,
PHASE DESIGNATION DIAGRAM &
TRAFFIC SIGNAL SEQUENCE OF OPERATIONS
IL ROUTE 50 (CICERO AVE) AT 183RD STREET

SCALE: NONE
DATE: 01-02-08
DRAWN BY: MAC
CHECKED BY: LDH

	REVISIONS	
	NAME	DATE

BAXTER & WOODMAN
Consulting Engineers

Copyright © 2007 by Baxter & Woodman, Inc.
STATE OF ILLINOIS - PROFESSIONAL DESIGN FIRM
LICENSE NO. 084-00001 - EXPIRES 4/30/2009
Project: 08-00146-00-TL-119