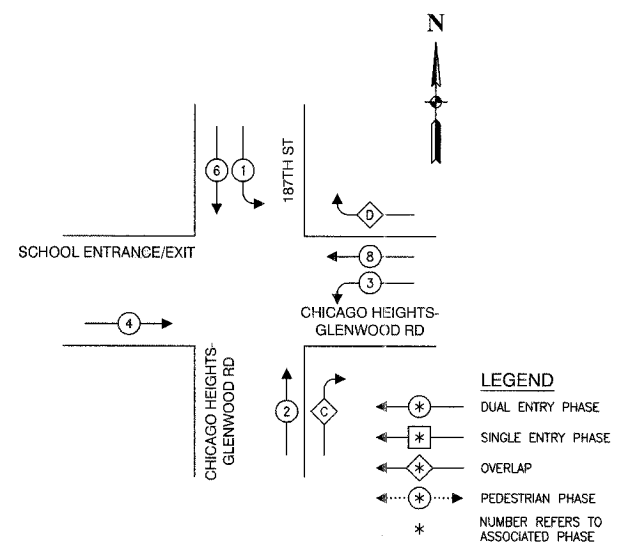
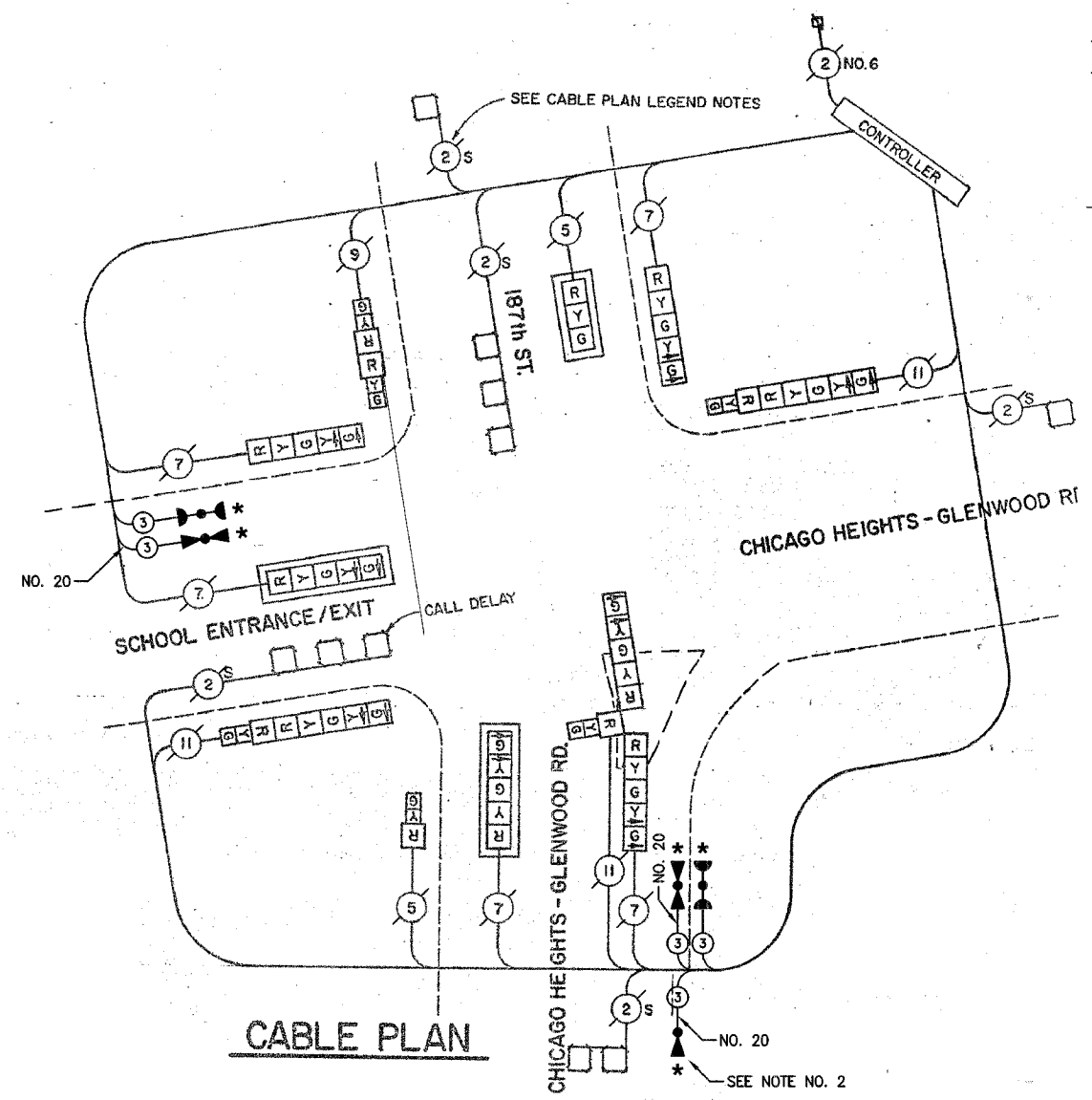


F. A. NO.	SECTION	COUNTY	TOTAL SHEETS	SHEET NO.
	08-00146-00-TL	COOK	273	135
STA.	TO STA.			
FED. ROAD DIST. NO.	ILLINOIS	FED. AID PROJECT		

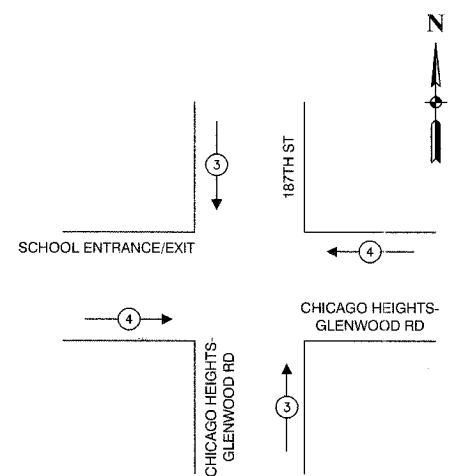
CONTRACT NO. 63003

CABLE PLAN LEGEND

EXISTING	PROPOSED	
		8" TRAFFIC SIGNAL SECTION
		12" TRAFFIC SIGNAL SECTION
		12" PEDESTRIAN SIGNAL SECTION
		12" PEDESTRIAN SIGNAL SECTION
		CONTROLLER CABINET
		SERVICE INSTALLATION
		TELEPHONE CONNECTION
		MAGNETIC DETECTOR
		EMERGENCY VEHICLE LIGHT DETECTOR
		CONFIRMATION BEACON
		PUSHBUTTON DETECTOR
		VEHICLE DETECTOR, INDUCTION LOOP
		2 DENOTES NUMBER OF CONDUCTORS. ALL CABLE NO. 14 EXCEPT AS INDICATED. ALL LOOP DETECTOR CABLE TO BE SHIELDED.
		SIGNAL FACE WITH BACKPLATE "P" INDICATES PROGRAMMED HEAD
		RAILROAD CONTROL CABINET
		ILLUMINATED SIGN, FIBER OPTIC "NO LEFT TURN"
		ILLUMINATED SIGN, FIBER OPTIC "NO RIGHT TURN"
		GROUND ROD AT HANDHOLE, DOUBLE HANDHOLE, OR CONTROLLER
		GROUND ROD AT POST OR MAST ARM POLE
		GROUND ROD AT ELECTRIC SERVICE INSTALLATION



OVERLAP	PERMISSIVE	PROTECTED	DISPLAY
C = 2	+ 3	- 2	
D = 8	+ 1	- 8	



EMERGENCY VEHICLE PREEMPTION SEQUENCE

PROPOSED EMERGENCY VEHICLE PREEMPTORS:		
EMERGENCY VEHICLE PREEMPTOR	3	4
MOVEMENT	↓	↑
	←	→

SCHEDULE OF QUANTITIES		
PAY ITEM	UNIT	QUANTITY
PORTLAND CEMENT CONCRETE SIDEWALK 6 INCH	SQ FT	100
SIDEWALK REMOVAL	SQ FT	100
CONDUIT IN TRENCH, 2" DIA., GALVANIZED STEEL	FOOT	5
MAINTENANCE OF EXISTING TRAFFIC SIGNAL INSTALLATION	EACH	1
ELECTRIC CABLE IN CONDUIT, SIGNAL NO. 14 3C	FOOT	297
TRAFFIC SIGNAL POST, GALVANIZED STEEL 18 FT.	EACH	2
CONCRETE FOUNDATION, TYPE A	EACH	4
DRILL EXISTING HANDHOLE	EACH	1
LIGHT DETECTOR	EACH	3
LIGHT DETECTOR AMPLIFIER	EACH	1
RELOCATE EXISTING SIGNAL HEAD	EACH	3
REMOVE AND REINSTALL ELECTRIC CABLE FROM CONDUIT	FOOT	30
REMOVE EXISTING TRAFFIC SIGNAL EQUIPMENT	EACH	1
ELECTRIC CABLE IN CONDUIT NO. 20 3/C, TWISTED SHIELDED	FOOT	575

NOTE

* 1. THIS PLAN IS FOR THE PURPOSE OF INSTALLING EMERGENCY VEHICLE PREEMPTION EQUIPMENT AS SHOWN PER PLAN INDICATED IN THE SCHEDULE OF QUANTITIES. ALL OTHER EQUIPMENT SHOWN SHALL BE DISREGARDED.

2. ADVANCE EMERGENCY VEHICLE DETECTOR HEAD FOR NORTHBOUND CHICAGO HEIGHTS-GLENWOOD ROAD. SEE TRAFFIC SIGNAL PLAN FOR DETAILS.

* PLANS MODIFIED BY ROBINSON ENGINEERING, LTD

REVISIONS	
NAME	DATE
NEW 18" POSTS	01/02/06

VILLAGE OF GLENWOOD LOCATION NO. 57

ILLINOIS DEPARTMENT OF TRANSPORTATION

PROPOSED EMERGENCY VEHICLE PREEMPTION CABLE PLAN, PHASE DESIGNATION DIAGRAM & SCHEDULE OF QUANTITIES

187TH ST & CHICAGO HEIGHTS-GLENWOOD RD

SCALE: VERT. HORIZ. DRAWN BY CHECKED BY

ROBINSON ENGINEERING, LTD. 17005 SOUTH PARK AVENUE SOUTH HOLLAND, ILLINOIS 60473 (708) 551-4700 FAX (708) 251-0848 ILLINOIS DESIGN FIRM REGISTRATION NO. 194001261