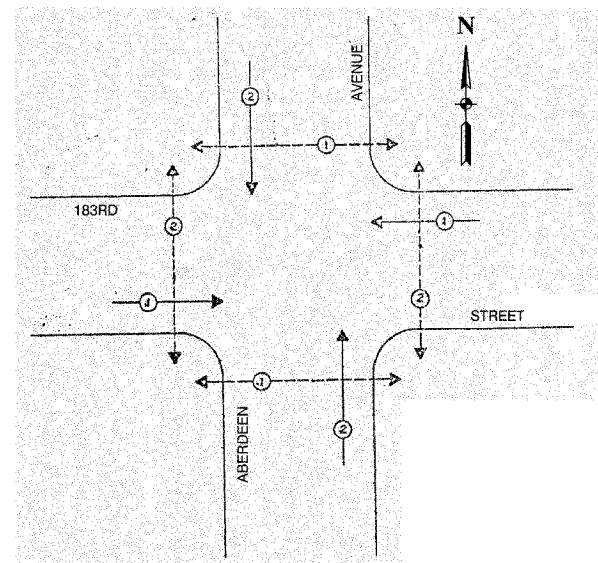
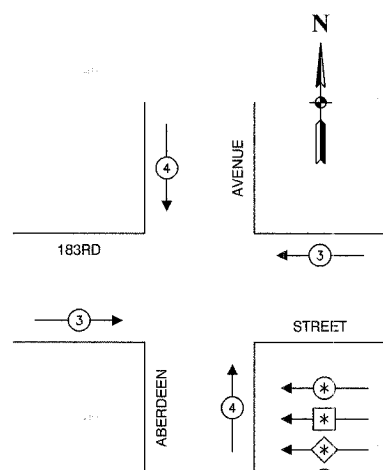


F. A. NO.	SECTION	COUNTY	TOTAL SHEETS	SHEET NO.
	08-00146-00-TL	COOK	273	152
STA.	TO STA.			
FED. ROAD DIST. NO.	ILLINOIS	FED. AID PROJECT		

CONTRACT NO. 63003



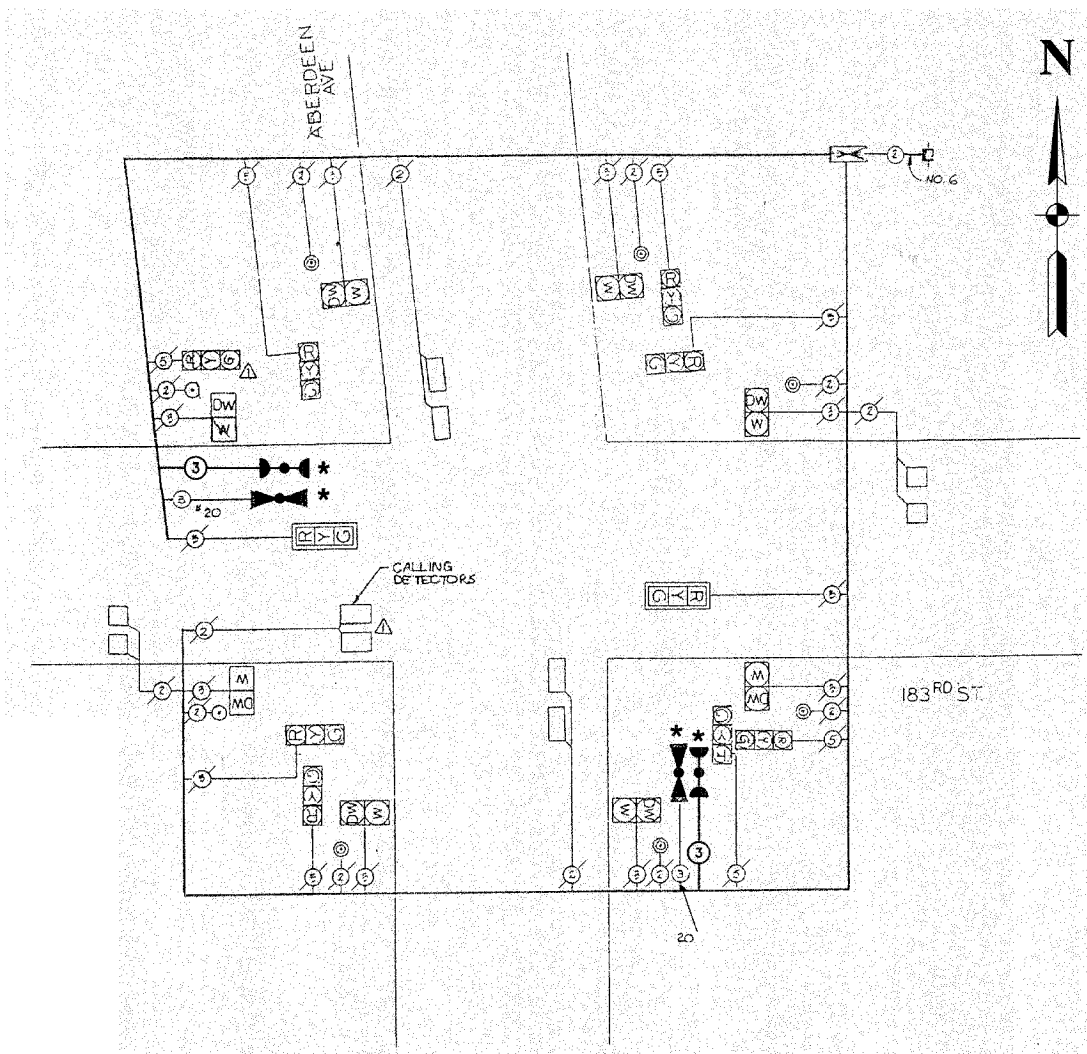
EXISTING PHASE DESIGNATION DIAGRAM



EMERGENCY VEHICLE PREEMPTION SEQUENCE

PROPOSED EMERGENCY VEHICLE PREEMPTORS		
EMERGENCY VEHICLE PREEMPTOR	3	4
MOVEMENT	← →	↑ ↓

- LEGEND**
- ← ⊙ → DUAL ENTRY PHASE
  - ← ⊙ SINGLE ENTRY PHASE
  - ← ⊙ → OVERLAP
  - ← ⊙ → PEDESTRIAN PHASE
  - \* NUMBER REFERS TO ASSOCIATED PHASE



CABLE PLAN

- CABLE PLAN LEGEND**
- |                 |                 |   |
|-----------------|-----------------|---|
| <b>EXISTING</b> | <b>PROPOSED</b> |   |
| ⊙               | ⊙               | 8" TRAFFIC SIGNAL SECTION   |
| ⊙               | ⊙               | 12" TRAFFIC SIGNAL SECTION  |
| ⊙               | ⊙               | 12" PEDESTRIAN SIGNAL SECTION   |
| ⊙               | ⊙               | 12" PEDESTRIAN SIGNAL SECTION   |
| ⊙               | ⊙               | CONTROLLER CABINET  |
| ⊙               | ⊙               | SERVICE INSTALLATION  |
| ⊙               | ⊙               | TELEPHONE CONNECTION  |
| ⊙               | ⊙               | MAGNETIC DETECTOR   |
| ⊙               | ⊙               | EMERGENCY VEHICLE LIGHT DETECTOR  |
| ⊙               | ⊙               | CONFIRMATION BEACON   |
| ⊙               | ⊙               | PUSHBUTTON DETECTOR   |
| ⊙               | ⊙               | VEHICLE DETECTOR, INDUCTION LOOP  |
| ⊙               | ⊙               | 2 DENOTES NUMBER OF CONDUCTORS. ALL CABLE NO. 14 EXCEPT AS INDICATED. ALL LOOP DETECTOR CABLE TO BE SHIELDED. |
| ⊙               | ⊙               | SIGNAL FACE WITH BACKPLATE  |
| ⊙               | ⊙               | "P" INDICATES PROGRAMMED HEAD   |
| "E" ⊙           | ⊙               | RAILROAD CONTROL CABINET  |
| "E" ⊙           | ⊙               | ILLUMINATED SIGN, FIBER OPTIC "NO LEFT TURN"  |
| "E" ⊙           | ⊙               | ILLUMINATED SIGN, FIBER OPTIC "NO RIGHT TURN"   |
| H/C ⊙           | ⊙               | GROUND ROD AT HANDHOLE, DOUBLE HANDHOLE, OR CONTROLLER  |
| P ⊙             | ⊙               | GROUND ROD AT POST OR MAST ARM POLE   |
| S ⊙             | ⊙               | GROUND ROD AT ELECTRIC SERVICE INSTALLATION   |

SCHEDULE OF QUANTITIES

PAY ITEM	UNIT	QUANTITY
MAINTENANCE OF EXISTING TRAFFIC SIGNAL INSTALLATION	EACH	1
ELECTRIC CABLE IN CONDUIT, SIGNAL NO. 14 3C	FOOT	274
LIGHT DETECTOR	EACH	2
LIGHT DETECTOR AMPLIFIER	EACH	1
REMOVE EXISTING TRAFFIC SIGNAL EQUIPMENT	EACH	1

**NOTE**

\* 1. THIS PLAN IS FOR THE PURPOSE OF INSTALLING EMERGENCY VEHICLE PREEMPTION EQUIPMENT AS SHOWN PER PLAN INDICATED IN THE SCHEDULE OF QUANTITIES. ALL OTHER EQUIPMENT SHOWN SHALL BE DISREGARDED.

VILLAGE OF HOMEWOOD  
LOCATION NO. 66

ILLINOIS DEPARTMENT OF TRANSPORTATION

PROPOSED EMERGENCY VEHICLE PREEMPTION  
CABLE PLAN, PHASE DESIGNATION DIAGRAM &  
SCHEDULE OF QUANTITIES  
183RD STREET & ABERDEEN AVENUE

\* PLANS MODIFIED BY  
ROBINSON ENGINEERING, LTD

REVISIONS	
NAME	DATE
ADDED EV PREEMPTION	01/02/08

SCALE: VERT. \_\_\_\_\_  
HORIZ. \_\_\_\_\_  
DATE \_\_\_\_\_ DRAWN BY \_\_\_\_\_  
CHECKED BY \_\_\_\_\_

ROBINSON ENGINEERING, LTD.  
1700 SOUTH PARK AVENUE SOUTH HOLLAND, ILLINOIS 60473  
708.351.6700 FAX 708.351.9306  
ILLINOIS DESIGN FIRM REGISTRATION NO. 18450126