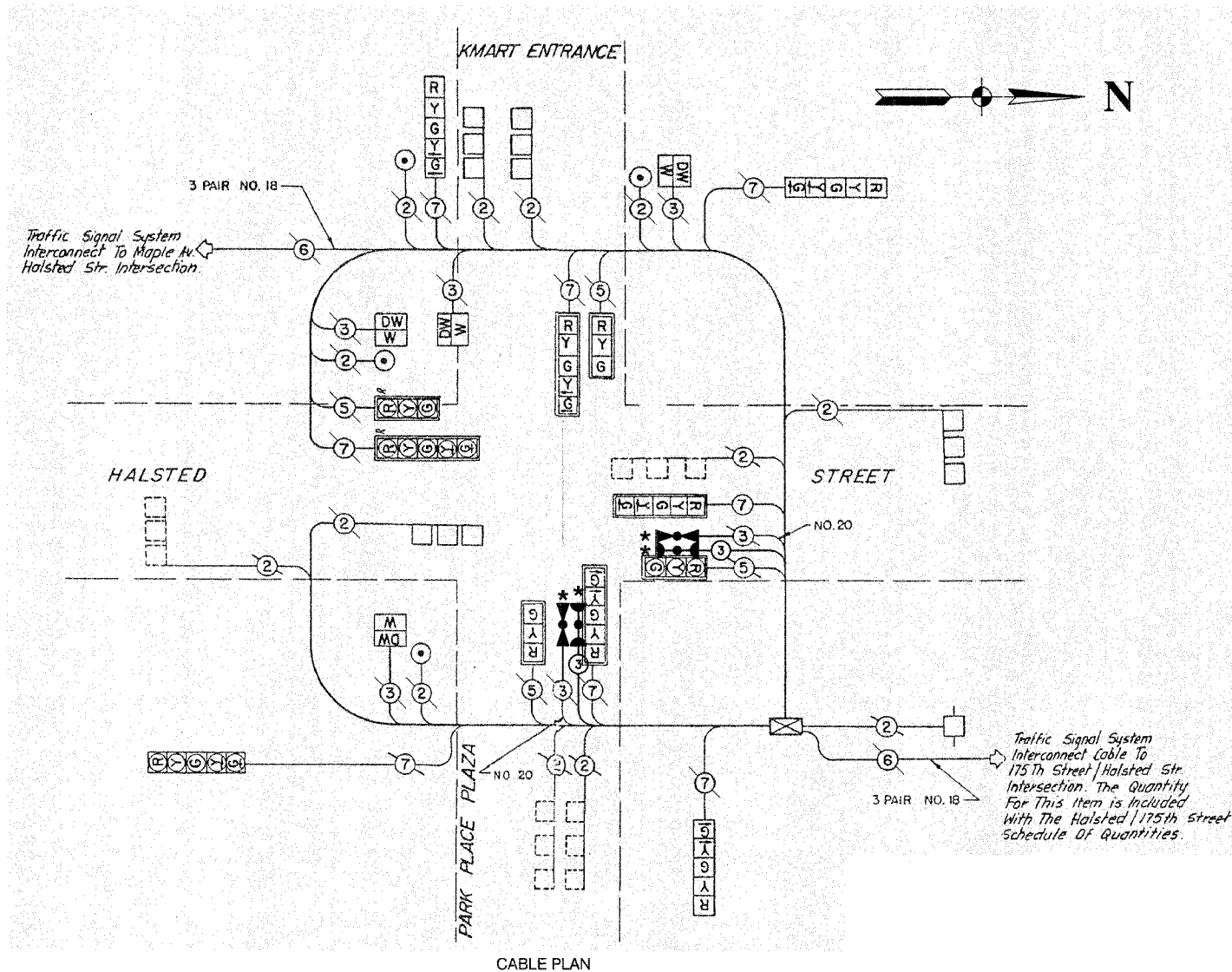


F. A. NO.	SECTION	COUNTY	TOTAL SHEETS	SHEET NO.
	08-00146-00-TL	COOK	273	188
STA.	TO STA.			
FED. ROAD DIST. NO.	LANDS	FED. RD PROJECT		

CONTRACT NO. 63003

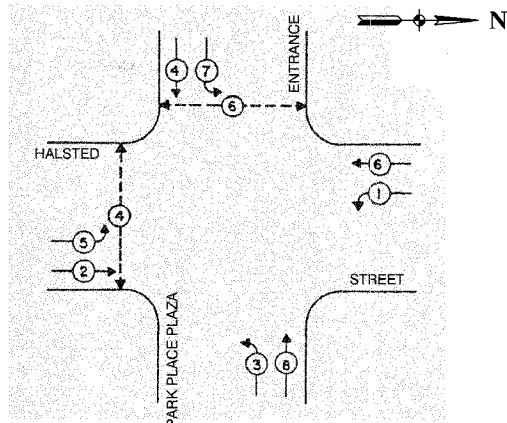
CABLE PLAN LEGEND

- |                 |                 |   |
|-----------------|-----------------|---|
| <b>EXISTING</b> | <b>PROPOSED</b> |   |
|                 |                 | 8" TRAFFIC SIGNAL SECTION   |
|                 |                 | 12" TRAFFIC SIGNAL SECTION  |
|                 |                 | 12" PEDESTRIAN SIGNAL SECTION   |
|                 |                 | 12" PEDESTRIAN SIGNAL SECTION   |
|                 |                 | CONTROLLER CABINET  |
|                 |                 | SERVICE INSTALLATION  |
|                 |                 | TELEPHONE CONNECTION  |
|                 |                 | MAGNETIC DETECTOR   |
|                 |                 | EMERGENCY VEHICLE LIGHT DETECTOR  |
|                 |                 | CONFIRMATION BEACON   |
|                 |                 | PUSHBUTTON DETECTOR   |
|                 |                 | VEHICLE DETECTOR, INDUCTION LOOP  |
|                 |                 | DENOTES NUMBER OF CONDUCTORS.<br>ALL CABLE NO. 14 EXCEPT AS INDICATED.<br>ALL LOOP DETECTOR CABLE TO BE SHIELDED. |
|                 |                 | SIGNAL FACE WITH BACKPLATE  |
|                 |                 | "P" INDICATES PROGRAMMED HEAD   |
|                 |                 | RAILROAD CONTROL CABINET  |
|                 |                 | ILLUMINATED SIGN, FIBER OPTIC<br>"NO LEFT TURN"   |
|                 |                 | ILLUMINATED SIGN, FIBER OPTIC<br>"NO RIGHT TURN"  |
|                 |                 | H/C<br>GROUND ROD AT HANDHOLE,<br>DOUBLE HANDHOLE, OR CONTROLLER  |
|                 |                 | P<br>GROUND ROD AT POST OR MAST ARM POLE  |
|                 |                 | S<br>GROUND ROD AT ELECTRIC SERVICE INSTALLATION  |

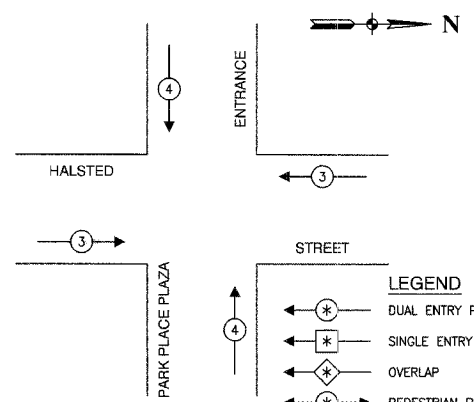


Traffic Signal System Interconnect To Maple Av. Halsted Str. Intersection.

Traffic Signal System Interconnect Cable To 175th Street / Halsted Str. Intersection. The Quantity For This Item is Included With The Halsted / 175th Street Schedule of Quantities.



PHASE DESIGNATION DIAGRAM



EMERGENCY VEHICLE PREEMPTION SEQUENCE

PROPOSED EMERGENCY VEHICLE PREEMPTORS		
EMERGENCY VEHICLE PREEMPTOR	3	4
MOVEMENT	← →	↑ ↓

SCHEDULE OF QUANTITIES		
PAY ITEM	UNIT	QUANTITY
MAINTENANCE OF EXISTING TRAFFIC SIGNAL INSTALLATION	EACH	1
ELECTRIC CABLE IN CONDUIT, SIGNAL NO. 14 3C	FOOT	278
LIGHT DETECTOR	EACH	2
LIGHT DETECTOR AMPLIFIER	EACH	1
REMOVE EXISTING TRAFFIC SIGNAL EQUIPMENT	EACH	1

**NOTE**  
 \* 1. THIS PLAN IS FOR THE PURPOSE OF INSTALLING EMERGENCY VEHICLE PREEMPTION EQUIPMENT AS SHOWN PER PLAN INDICATED IN THE SCHEDULE OF QUANTITIES. ALL OTHER EQUIPMENT SHOWN SHALL BE DISREGARDED.

\* PLANS MODIFIED BY ROBINSON ENGINEERING, LTD

REVISIONS	
NAME	DATE
* ADDED EV PREEMPTION	01/02/08

VILLAGE OF HOMEWOOD  
 LOCATION NO. 74

ILLINOIS DEPARTMENT OF TRANSPORTATION

PROPOSED EMERGENCY VEHICLE PREEMPTION  
 CABLE PLAN, PHASE DESIGNATION DIAGRAM &  
 SCHEDULE OF QUANTITIES  
 176TH STREET & HALSTED STREET

SCALE: VERT. \_\_\_\_\_ DRAWN BY \_\_\_\_\_  
 HORIZ. \_\_\_\_\_ CHECKED BY \_\_\_\_\_  
 DATE \_\_\_\_\_