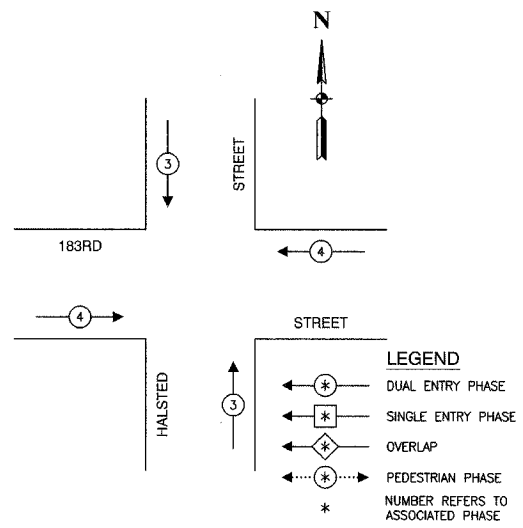
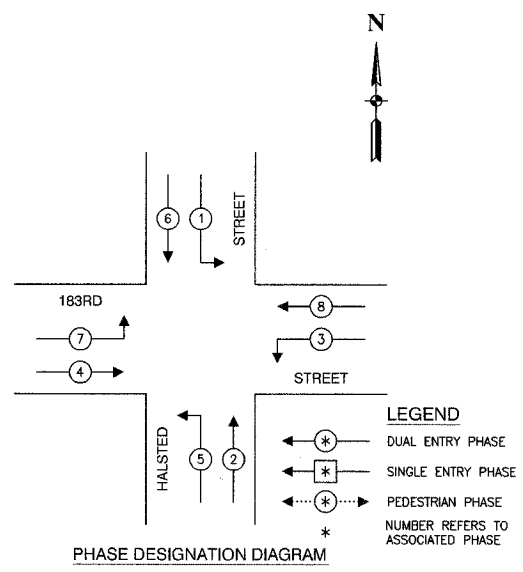


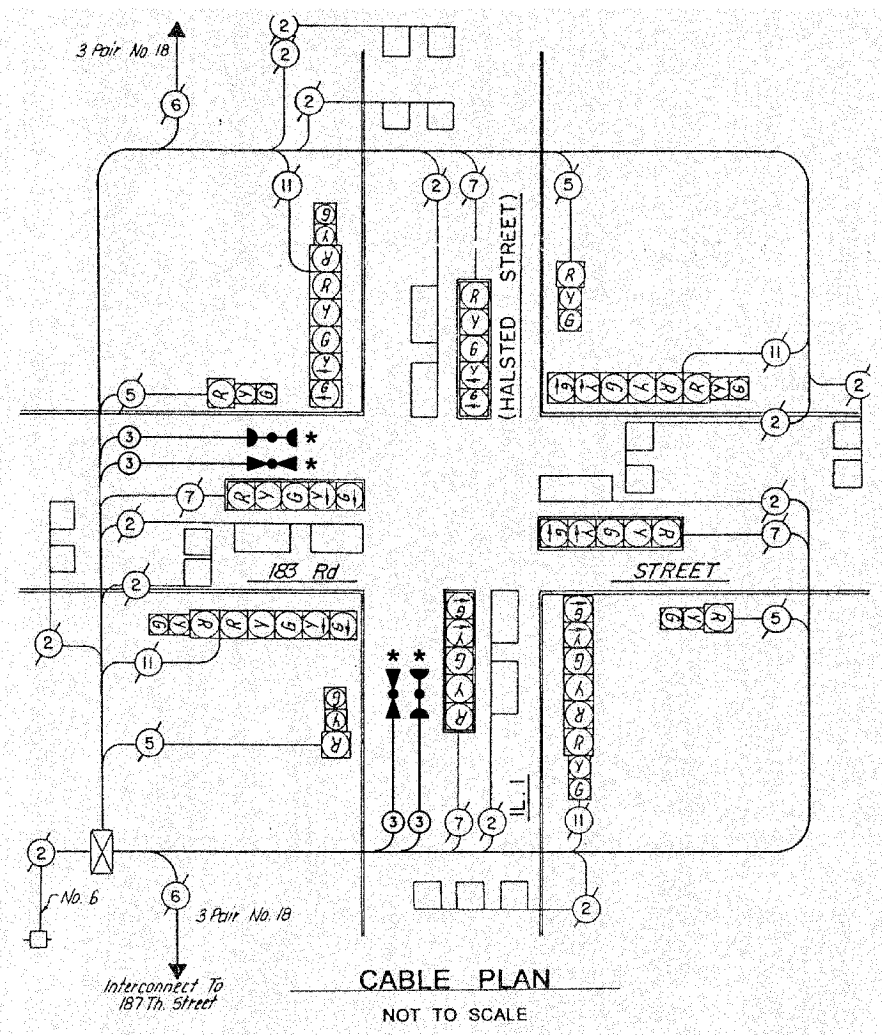
|                     |                |                  |              |           |
|---------------------|----------------|------------------|--------------|-----------|
| F. A. SHEET         | SECTION        | COUNTY           | TOTAL SHEETS | SHEET NO. |
|                     | 08-00146-00-TL | COOK             | 273          | 178       |
| STA.                |                | TO STA.          |              |           |
| FED. ROAD DIST. NO. | ALINOR         | FED. AID PROJECT |              |           |

CONTRACT NO. 63003



**EMERGENCY VEHICLE PREEMPTION SEQUENCE**

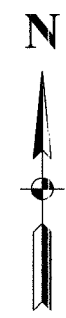
| PROPOSED EMERGENCY VEHICLE PREEMPTORS |   |   |
|---------------------------------------|---|---|
| EMERGENCY VEHICLE PREEMPTOR           | 3 | 4 |
| MOVEMENT                              | ↓ | ← |



| SCHEDULE OF QUANTITIES                              |      |          |
|---|------|----------|
| PAY ITEM  | UNIT | QUANTITY |
| MAINTENANCE OF EXISTING TRAFFIC SIGNAL INSTALLATION | EACH | 1        |
| ELECTRIC CABLE IN CONDUIT, SIGNAL NO. 14 3C         | FOOT | 262      |
| LIGHT DETECTOR                                      | EACH | 2        |
| LIGHT DETECTOR AMPLIFIER                            | EACH | 1        |
| REMOVE EXISTING TRAFFIC SIGNAL EQUIPMENT            | EACH | 1        |

**NOTE**

\* 1. THIS PLAN IS FOR THE PURPOSE OF INSTALLING EMERGENCY VEHICLE PREEMPTION EQUIPMENT AS SHOWN PER PLAN INDICATED IN THE SCHEDULE OF QUANTITIES. ALL OTHER EQUIPMENT SHOWN SHALL BE DISREGARDED.



| EXISTING | PROPOSED |   |
|----------|----------|---|
|          |          | 8" TRAFFIC SIGNAL SECTION   |
|          |          | 12" TRAFFIC SIGNAL SECTION  |
|          |          | 12" PEDESTRIAN SIGNAL SECTION   |
|          |          | 12" PEDESTRIAN SIGNAL SECTION   |
|          |          | CONTROLLER CABINET  |
|          |          | SERVICE INSTALLATION  |
|          |          | TELEPHONE CONNECTION  |
|          |          | MAGNETIC DETECTOR   |
|          |          | EMERGENCY VEHICLE LIGHT DETECTOR  |
|          |          | CONFIRMATION BEACON   |
|          |          | PUSHBUTTON DETECTOR   |
|          |          | VEHICLE DETECTOR, INDUCTION LOOP  |
|          |          | DENOTES NUMBER OF CONDUCTORS. ALL CABLE NO. 14 EXCEPT AS INDICATED. ALL LOOP DETECTOR CABLE TO BE SHIELDED. |
|          |          | SIGNAL FACE WITH BACKPLATE  |
|          |          | "P" INDICATES PROGRAMMED HEAD   |
|          |          | RAILROAD CONTROL CABINET  |
|          |          | ILLUMINATED SIGN, FIBER OPTIC "NO LEFT TURN"  |
|          |          | ILLUMINATED SIGN, FIBER OPTIC "NO RIGHT TURN"   |
| H/C      | H/C      | GROUND ROD AT HANDHOLE, DOUBLE HANDHOLE, OR CONTROLLER  |
| P        | P        | GROUND ROD AT POST OR MAST ARM POLE   |
| S        | S        | GROUND ROD AT ELECTRIC SERVICE INSTALLATION   |

**VILLAGE OF HOMEWOOD  
LOCATION NO. 79**

\* PLANS MODIFIED BY ROBINSON ENGINEERING, LTD

| REVISIONS             |          |
|-----------------------|----------|
| NAME                  | DATE     |
| * ADDED EV PREEMPTION | 01/02/08 |
|                       |          |
|                       |          |
|                       |          |
|                       |          |
|                       |          |

ILLINOIS DEPARTMENT OF TRANSPORTATION

**PROPOSED EMERGENCY VEHICLE PREEMPTION CABLE PLAN, PHASE DESIGNATION DIAGRAM & SCHEDULE OF QUANTITIES**

183RD STREET & HALSTED STREET

SCALE: VERT. \_\_\_\_\_  
HORIZ. \_\_\_\_\_

DATE \_\_\_\_\_ DRAWN BY \_\_\_\_\_  
CHECKED BY \_\_\_\_\_