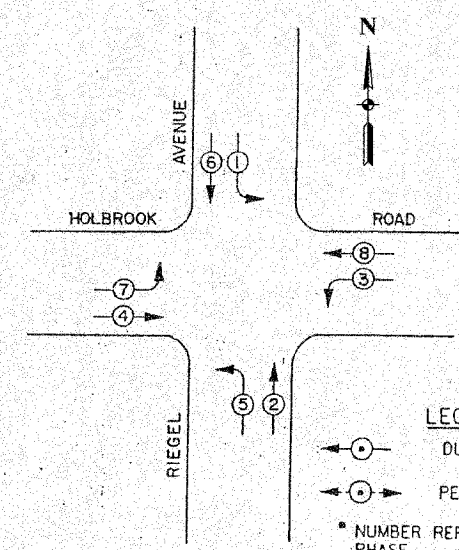


F. A. NO.	SECTION	COUNTY	TOTAL SHEETS	SHEET NO.
	08-00146-00-TL	COOK	273	182
STA.	TO STA.			
FED. ROAD DIST. NO.	ILLINOIS	FED. AID PROJECT		

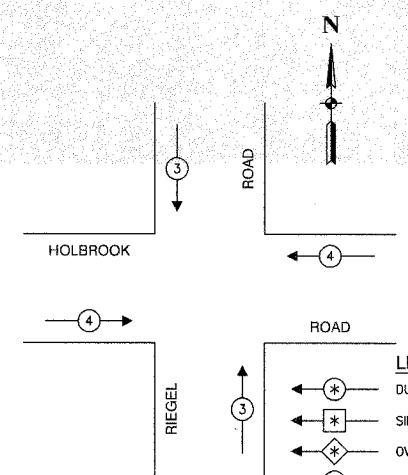
CONTRACT NO. 63003

PROPOSED
CONTROLLER SEQUENCE IV
REFERRING TO STANDARD 2393, THE VEHICULAR AND PEDESTRIAN PHASES USED ARE DESIGNATED BELOW.



LEGEND
 ←○→ DUAL ENTRY PHASE
 ←○ PEDESTRIAN PHASE
 * NUMBER REFERS TO ASSOCIATED PHASE

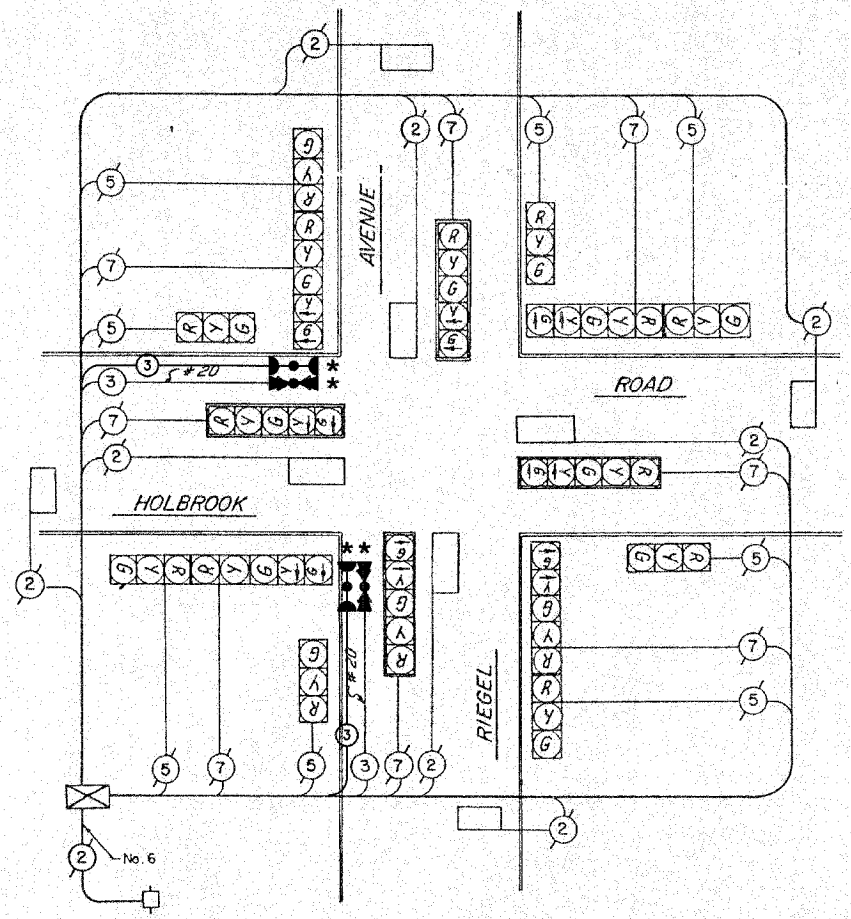
PHASE DESIGNATION DIAGRAM
 DUAL ENTRY - ALL LEGS
 PROTECTED/PERMITTED LEFT TURN PHASING



LEGEND
 ←○*→ DUAL ENTRY PHASE
 ←○* SINGLE ENTRY PHASE
 ←○* OVERLAP
 ←○* PEDESTRIAN PHASE
 * NUMBER REFERS TO ASSOCIATED PHASE

EMERGENCY VEHICLE PREEMPTION SEQUENCE

PROPOSED EMERGENCY VEHICLE PREEMPTORS		
EMERGENCY VEHICLE PREEMPTOR	3	4
MOVEMENT	↓	←



CABLE PLAN
NOT TO SCALE

SCHEDULE OF QUANTITIES		
PAY ITEM	UNIT	QUANTITY
MAINTENANCE OF EXISTING TRAFFIC SIGNAL INSTALLATION	EACH	1
ELECTRIC CABLE IN CONDUIT, SIGNAL NO. 14 3C	FOOT	252
LIGHT DETECTOR	EACH	2
LIGHT DETECTOR AMPLIFIER	EACH	1
REMOVE EXISTING TRAFFIC SIGNAL EQUIPMENT	EACH	1

NOTE
 * 1. THIS PLAN IS FOR THE PURPOSE OF INSTALLING EMERGENCY VEHICLE PREEMPTION EQUIPMENT AS SHOWN PER PLAN INDICATED IN THE SCHEDULE OF QUANTITIES. ALL OTHER EQUIPMENT SHOWN SHALL BE DISREGARDED.



- CABLE PLAN LEGEND**
- | | | |
|-----------------|-----------------|---|
| EXISTING | PROPOSED | |
| | | 8" TRAFFIC SIGNAL SECTION |
| | | 12" TRAFFIC SIGNAL SECTION |
| | | 12" PEDESTRIAN SIGNAL SECTION |
| | | 12" PEDESTRIAN SIGNAL SECTION |
| | | CONTROLLER CABINET |
| | | SERVICE INSTALLATION |
| | | TELEPHONE CONNECTION |
| | | MAGNETIC DETECTOR |
| | | EMERGENCY VEHICLE LIGHT DETECTOR |
| | | CONFIRMATION BEACON |
| | | PUSHBUTTON DETECTOR |
| | | VEHICLE DETECTOR, INDUCTION LOOP |
| | | DENOTES NUMBER OF CONDUCTORS.
ALL CABLE NO. 14 EXCEPT AS INDICATED.
ALL LOOP DETECTOR CABLE TO BE SHIELDED. |
| | | SIGNAL FACE WITH BACKPLATE
"P" INDICATES PROGRAMMED HEAD |
| | | RAILROAD CONTROL CABINET |
| | | ILLUMINATED SIGN, FIBER OPTIC
"NO LEFT TURN" |
| | | ILLUMINATED SIGN, FIBER OPTIC
"NO RIGHT TURN" |
| | | H/C GROUND ROD AT HANDHOLE,
DOUBLE HANDHOLE, OR CONTROLLER |
| | | P GROUND ROD AT POST OR MAST ARM POLE |
| | | S GROUND ROD AT ELECTRIC SERVICE INSTALLATION |

VILLAGE OF HOMEWOOD
LOCATION NO. 81

ILLINOIS DEPARTMENT OF TRANSPORTATION

PROPOSED EMERGENCY VEHICLE PREEMPTION
CABLE PLAN, PHASE DESIGNATION DIAGRAM &
SCHEDULE OF QUANTITIES
HOLBROOK ROAD & RIEGEL ROAD

* PLANS MODIFIED BY
ROBINSON ENGINEERING, LTD

REVISIONS	
NAME	DATE
* ADDED EV PREEMPTION	01/02/08

SCALE: VERT. _____
HORIZ. _____
DATE _____ DRAWN BY _____
CHECKED BY _____