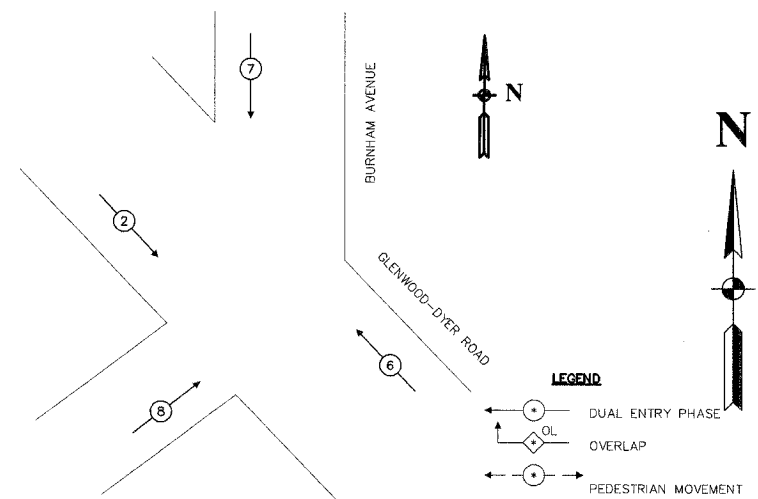


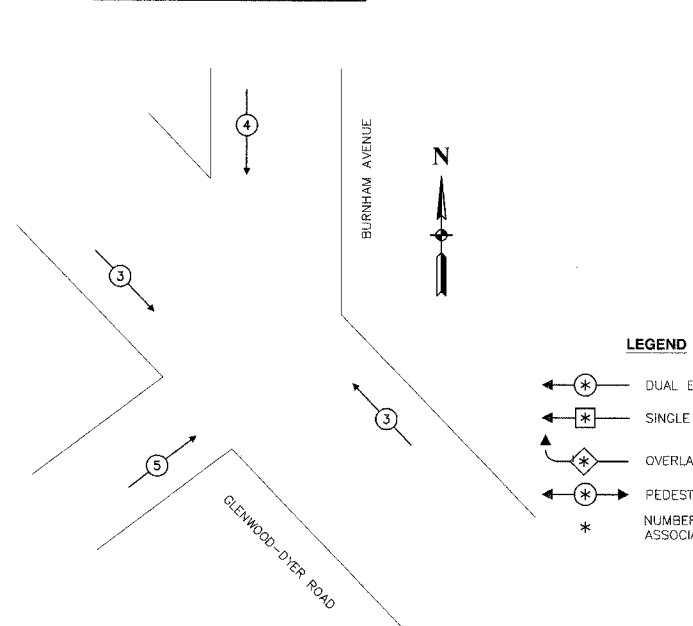
F. A. ETC.	SECTION	COUNTY	TOTAL SHEETS	SHEET NO.
	08-00146-00-TL	COOK	273	194
STA.		TO STA.		
FED. ROAD DIST. NO.	BLANKET	FED. AID PROJECT		

CONTRACT NO. 63003

**CONTROLLER SEQUENCE**



**PHASE DESIGNATION DIAGRAM**



**EMERGENCY VEHICLE PREEMPTION SEQUENCE**

PROPOSED EMERGENCY VEHICLE PREEMPTORS			
EMERGENCY VEHICLE PREEMPTOR	3	4	5
MOVEMENT	↘	↓	↗

CABLE PLAN LEGEND	
EXISTING	PROPOSED
	8" TRAFFIC SIGNAL SECTION
	12" TRAFFIC SIGNAL SECTION
	12" PEDESTRIAN SIGNAL SECTION
	12" PEDESTRIAN SIGNAL SECTION
	CONTROLLER CABINET
	SERVICE INSTALLATION
	TELEPHONE CONNECTION
	MAGNETIC DETECTOR
	EMERGENCY VEHICLE LIGHT DETECTOR
	CONFIRMATION BEACON
	PUSHBUTTON DETECTOR
	VEHICLE DETECTOR, INDUCTION LOOP
DENOTES NUMBER OF CONDUCTORS. ALL CABLE NO. 14 EXCEPT AS INDICATED. ALL LOOP DETECTOR CABLE TO BE SHIELDED.	
	SIGNAL FACE WITH BACKPLATE
"P" INDICATES PROGRAMMED HEAD	
	RAILROAD CONTROL CABINET
	ILLUMINATED SIGN, FIBER OPTIC "NO LEFT TURN"
	ILLUMINATED SIGN, FIBER OPTIC "NO RIGHT TURN"
	H/C GROUND ROD AT HANDHOLE, DOUBLE HANDHOLE, OR CONTROLLER
	P GROUND ROD AT POST OR MAST ARM POLE
	S GROUND ROD AT ELECTRIC SERVICE INSTALLATION

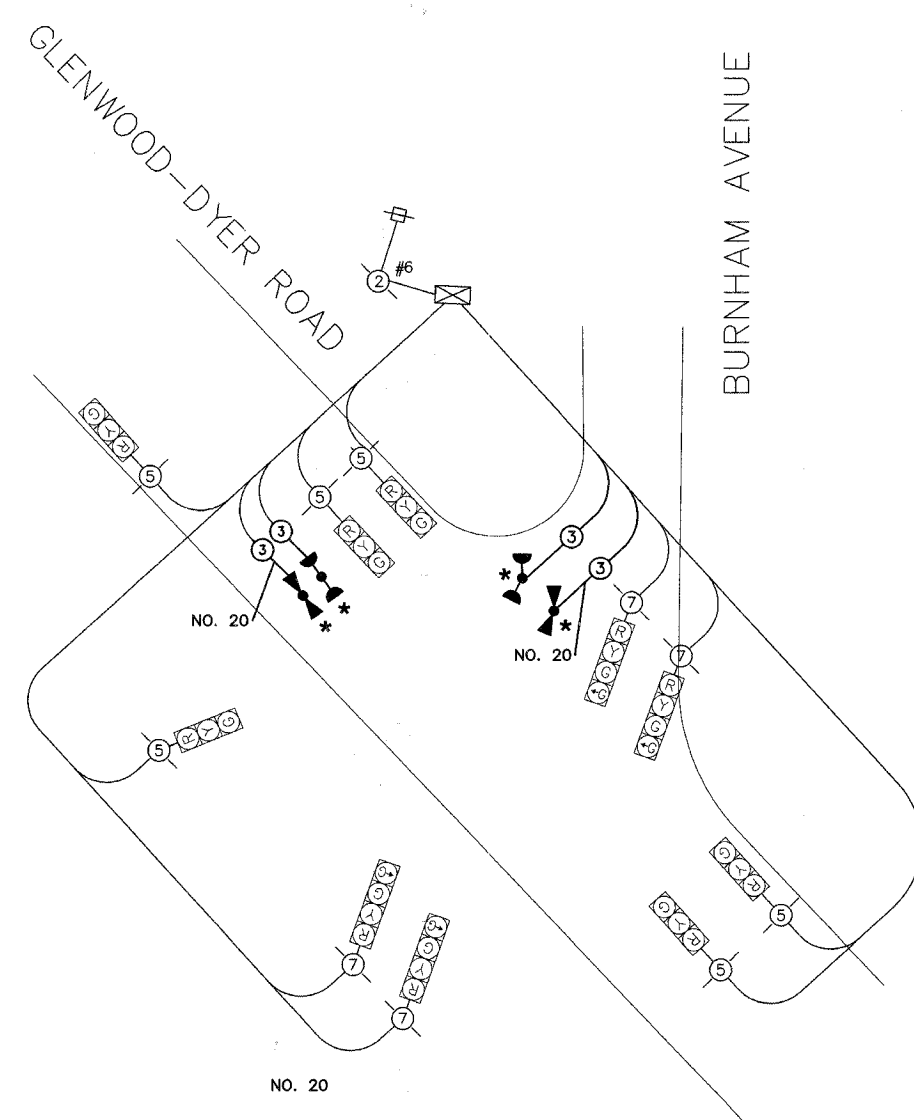
**LEGEND**

	DUAL ENTRY PHASE
	OVERLAP
	PEDESTRIAN MOVEMENT

\* NUMBER REFERS TO ASSOCIATED PHASE

**LEGEND**

	DUAL ENTRY PHASE
	SINGLE ENTRY PHASE
	OVERLAP
	PEDESTRIAN PHASE
*	NUMBER REFERS TO ASSOCIATED PHASE



**CABLE PLAN**

SCHEDULE OF QUANTITIES		
PAY ITEM	UNIT	QUANTITY
MAINTENANCE OF EXISTING TRAFFIC SIGNAL INSTALLATION	EACH	1
ELECTRIC CABLE AERIAL SUSPENDED, SIGNAL, NO. 14 3C	FOOT	239
LIGHT DETECTOR	EACH	2
LIGHT DETECTOR AMPLIFIER	EACH	1
ELECTRIC CABLE AERIAL SUSPENDED NO. 20 3/C, TWISTED, SHIELDED	FOOT	239

**NOTE**  
 \* 1. THIS PLAN IS FOR THE PURPOSE OF INSTALLING EMERGENCY VEHICLE PREEMPTION EQUIPMENT AS SHOWN PER PLAN INDICATED IN THE SCHEDULE OF QUANTITIES. ALL OTHER EQUIPMENT SHOWN SHALL BE DISREGARDED.

\* PLANS MODIFIED BY ROBINSON ENGINEERING, LTD.

REVISIONS	
NAME	DATE
ADDED EV PREEMPTION	01/02/08
ADDED NEW 18" POST	

VILLAGE OF LYNWOOD  
 LOCATION NO. 87

ILLINOIS DEPARTMENT OF TRANSPORTATION

PROPOSED EMERGENCY VEHICLE PREEMPTION CABLE PLAN, PHASE DESIGNATION DIAGRAM & SCHEDULE OF QUANTITIES  
 GLENWOOD DYER ROAD & BURNHAM AVENUE

SCALE: VERT. \_\_\_\_\_  
 HORIZ. \_\_\_\_\_

DATE \_\_\_\_\_ DRAWN BY \_\_\_\_\_  
 CHECKED BY \_\_\_\_\_

ROBINSON ENGINEERING, LTD.  
 17000 SOUTH PARK AVENUE SOUTH HOLLAND, ILLINOIS 60473  
 (708) 521-8700 FAX (708) 521-3808  
 ILLINOIS DESIGN PROFESSIONAL REGISTRATION NO. 184201125